

# M7CL V2 Editor

## Owner's Manual

### Special Notices

---

---

- The software and this owner's manual are the exclusive copyrights of Yamaha Corporation.
- Copying of the software or reproduction of this manual in whole or in part by any means is expressly forbidden without the written consent of the manufacturer.
- Copying of the commercially available music sequence data and/or digital audio files is strictly prohibited except for your personal use.
- Yamaha makes no representations or warranties with regard to the use of the software and documentation and cannot be held responsible for the results of the use of this manual and the software.
- The screen displays as illustrated in this owner's manual are for instructional purposes, and may appear somewhat different from the screens which appear on your computer.
- For information on modification of system software, certain functions, or specifications due to version update of the application, please visit the following website:  
<http://www.yamahaproaudio.com/>
- Windows is a registered trademark of Microsoft Corporation in the United States of America and other countries.
- The company names and product names in this Owner's Manual are the trademarks or registered trademarks of their respective companies.

### Yamaha Pro Audio Global Site

<http://www.yamahaproaudio.com/>

### Contents

---

---

<b>Getting Started</b> .....	<b>2</b>
<b>Master window</b> .....	<b>9</b>
<b>Overview window</b> .....	<b>11</b>
<b>Selected Channel window</b> .....	<b>23</b>
<b>Library window</b> .....	<b>42</b>
<b>Patch Editor window</b> .....	<b>45</b>
<b>Rack window</b> .....	<b>49</b>
<b>Meter window</b> .....	<b>58</b>
<b>Group/Link window</b> .....	<b>60</b>
<b>Scene window</b> .....	<b>64</b>
<b>Keyboard Shortcuts</b> .....	<b>72</b>
<b>Index</b> .....	<b>73</b>

\* Specifications and descriptions in this owner's manual are for information purposes only. Yamaha Corp. reserves the right to change or modify products or specifications at any time without prior notice.

# Getting Started

## Overview of M7CL V2 Editor

M7CL V2 Editor (hereinafter called “M7CL Editor” in this document) enables you to remotely control a Yamaha M7CL mixing console (Version 2) (such as M7CL-48 or M7CL-32; hereinafter collectively called “M7CL” in this document). M7CL V2 Editor also enables you to save the parameter settings on your computer. To use M7CL Editor, you must first perform the following operations:

- 1 Start and configure Studio Manager.
- 2 Start and configure M7CL Editor.
- 3 Synchronize M7CL Editor with your M7CL console (➔ p.8).

**NOTE** For more information on using Studio Manager, refer to the Studio Manager Owner's Manual.

## Configuring M7CL Editor

You must configure the following settings for each open Editor.

- NOTE**
- Before you make the following settings, you must make settings for the DME-N Network Driver and select the MIDI port in the Setup window of Studio Manager.
  - To open an editor, double-click the icon for the desired editor in the Studio Manager window.

### System Setup

To open the System Setup window, choose [System Setup] from the [File] menu.

**NOTE** Be sure to specify the Input port and Output port.

#### ① Input port/Output port

From the ports you specified in Studio Manager, select the ports that the editor will use to communicate with the M7CL console.

#### ② Fast Sync

This allows synchronization to be speed up, reducing the time required. Use this check box to choose whether to enable this function.

#### ③ Window Control from Console

This option determines whether or not using the USER DEFINED KEYS on the console enables you to remotely open and close the M7CL Editor windows.

#### ④ Level Meter

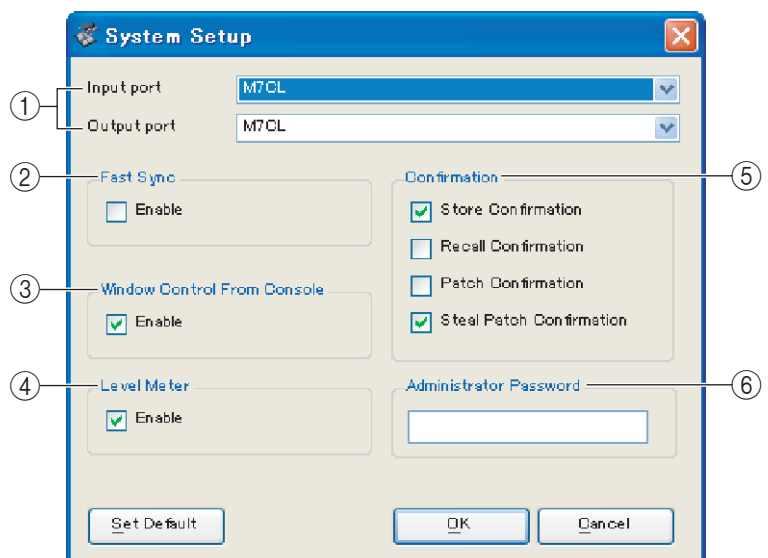
By disabling the meter function you can reduce the processing load caused by screen drawing and communication. This option specifies whether the level meter functionality will be enabled.

#### ⑤ Confirmation

These check boxes specify whether a confirmation dialog box will appear when you store (Store Confirmation), recall (Recall Confirmation), patch (Patch Confirmation), or make a patch change that would modify an existing patch (Steal Patch Confirmation).

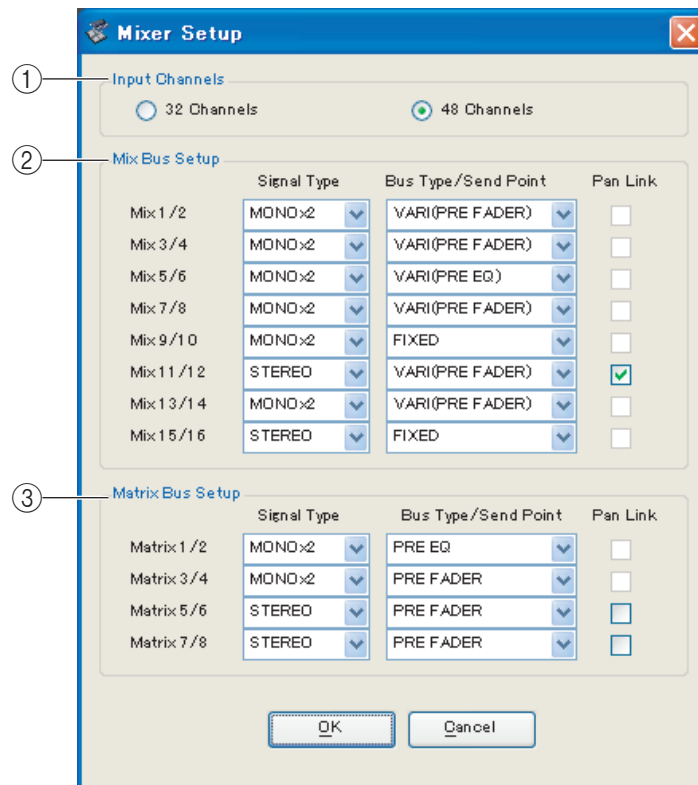
#### ⑥ Administrator Password

Enter the Administrator password that was specified on the M7CL console. If this password is not entered correctly, it will not be possible to synchronize from M7CL Editor to the M7CL console.



## ❑ Mixer Setup

To open the Mixer Setup window, choose [Mixer Setup] from the [File] menu.



### ① Input Channels

Specify the number of input channels on the M7CL console. When the editor is synchronized with the M7CL console, the actual number of channels on the M7CL console will automatically be specified here.

### ② Mix Bus Setup

Here you can make settings relating to the MIX buses.

**Signal Type:** Choose either MONOx2 or STEREO for each two adjacent odd-numbered/even-numbered MIX buses.

**Bus Type/Send Point:** Choose either VARI (PRE FADER) or VARI (PRE EQ) or FIXED for each two adjacent odd-numbered/even-numbered MIX buses.

**Pan Link:** This is valid only if the Signal Type is set to STEREO and the Bus Type is set to VARI. If this is enabled, the pan setting sent to stereo MIX buses will be linked with the pan setting to the STEREO bus.

### ③ Matrix Bus Setup

Here you can make settings relating to the MATRIX buses.

**Signal Type:** Choose either MONOx2 or STEREO for each two adjacent odd-numbered/even-numbered MATRIX buses.

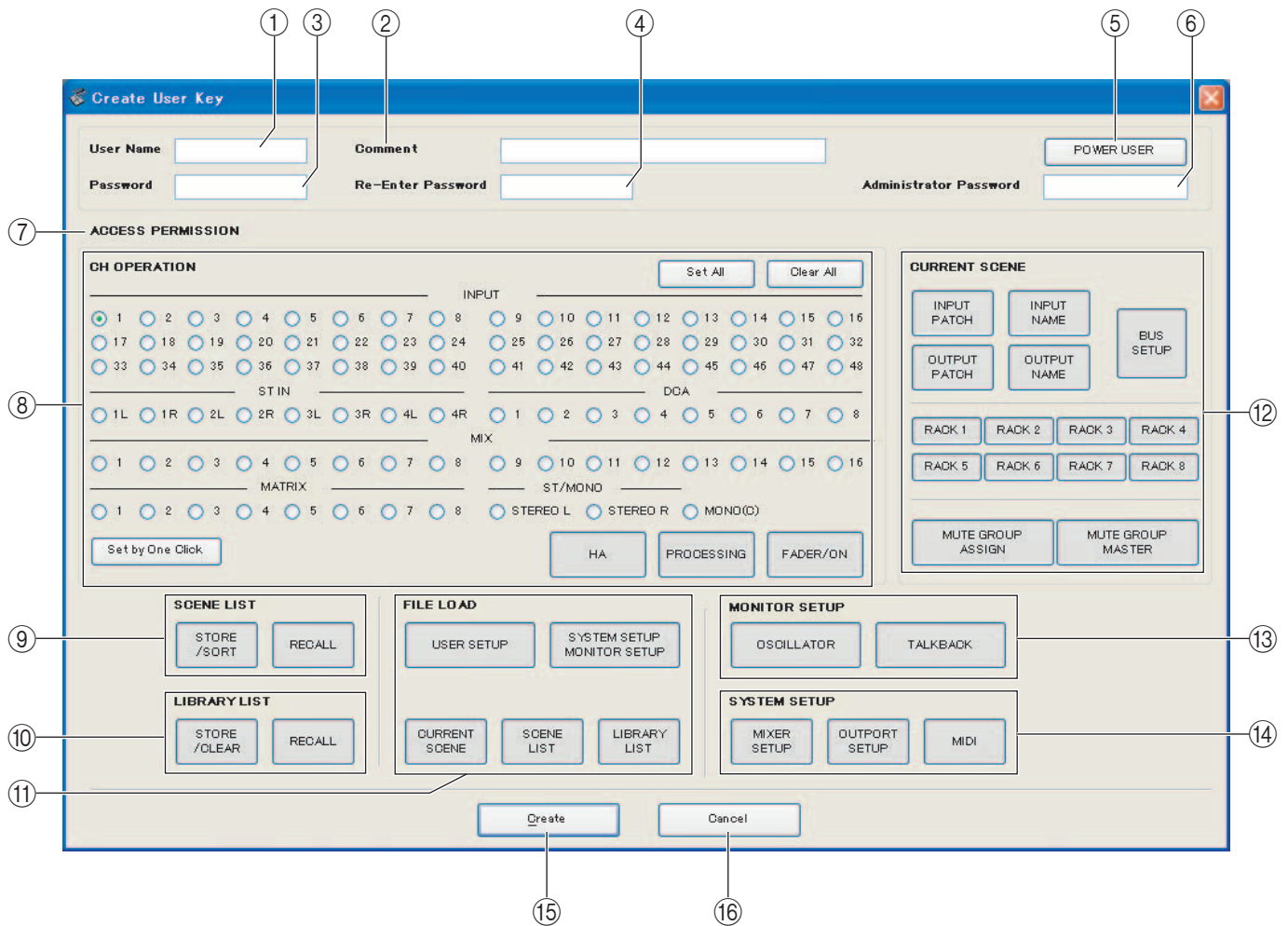
**Bus Type/Send Point:** Choose either PRE FADER or PRE EQ for each two adjacent odd-numbered/even-numbered MATRIX buses.

**Pan Link:** This is valid only if the Signal Type is set to STEREO and the Bus Type is set to VARI. If this is enabled, the pan setting sent to stereo MATRIX buses will be linked with the pan setting to the STEREO bus.

## ❑ Creating a user key

To open the Create User Key window, choose [Create User Key] from the [File] menu.

This creates a user key (with “.M7U” file name extension) that can be read from a USB storage device by the M7CL console to automatically set user-specific parameters.



### ① User Name

Specify the name of the user. You can enter up to eight single-byte characters of alphabet and numerals.

### ② Comment

Enter a comment for each user. You can enter up to thirty-two single-byte alphanumeric characters.

### ③ Password

Enter a password that will be used when this user key is read by the M7CL console. You can enter up to eight single-byte alphanumeric characters. Uppercase and lowercase are distinguished.

### ④ Re-Enter Password

Enter the password once again as a safeguard against mistaken entry.

### ⑤ POWER USER

Specify whether this user is a power user. Power users can use the M7CL console to create or edit a user authentication key with a specified user level.

### ⑥ Administrator Password

Enter the Administrator password that was specified on the M7CL console. This is not required if no Administrator password has been specified on the M7CL console, but if this password is incorrect you will be asked to enter it when the user key is read.

### ⑦ ACCESS PERMISSION

In this area, specify the parameters that this user will be allowed to operate.

## ⑧ CH OPERATION

**INPUT, ST IN, DCA, MIX, MATRIX, ST/MONO:** Select the channels whose parameters will be operable.

**HA:** Change the operating privileges for the head amp gain and phantom power of the selected channels.

**PROCESSING:** Change the operating privileges for overall signal processing parameters (except for fader and [ON] key) of the selected channel. For the specific parameters included in PROCESSING, refer to the appendix of the M7CL owner's manual.

**FADER/ON:** Change the operating privileges for the pan/balance, fader, channel on, send on/off, and send level of the selected channels.

**Set All:** Turn on HA, PROCESSING, and FADER/ON for all channels.

**Clear All:** Turn off HA, PROCESSING, and FADER/ON for all channels.

**Set by One Click:** If this button is on, HA, PROCESSING, and FADER/ON will all be turned on when you select a channel. If all are already on, all will be turned off.

## ⑨ SCENE LIST

**STORE/SORT:** Change the operating privileges for scene store and sort operations.

**RECALL:** Change the operating privileges for scene recall operations.

## ⑩ LIBRARY LIST

**STORE/CLEAR:** Change the operating privileges for library store and clear operations.

**RECALL:** Change the operating privileges for library recall operations.

## ⑪ FILE LOAD

**USER SETUP:** Change the operating privileges for loading user-defined keys and preferences when loading a file.

**SYSTEM SETUP MONITOR SETUP:** Change the operating privileges for loading system setup and monitor setup settings when loading a file.

**CURRENT SCENE:** Change the operating privileges for loading the current scene when loading a file.

**SCENE LIST:** Change the operating privileges for loading the scene list when loading a file.

**LIBRARY LIST:** Change the operating privileges for loading the library list when loading a file.

## ⑫ CURRENT SCENE

**INPUT PATCH:** Change the operating privileges for input patch operations.

**INPUT NAME:** Change the privileges for editing the input names.

**OUTPUT PATCH:** Change the operating privileges for output patching.

**OUTPUT NAME:** Change the privileges for editing the output names.

**BUS SETUP:** Change the operating privileges for buses.

**RACK:** Change the operating privileges for rack operations.

**MUTE GROUP ASSIGN:** Change the privileges for assigning mute groups.

**MUTE GROUP MASTER:** Change the operating privileges for enabling/disabling mute groups.

## ⑬ MONITOR SETUP

**OSCILLATOR:** Change the operating privileges for oscillator settings.

**TALKBACK:** Change the operating privileges for talkback settings.

## ⑭ SYSTEM SETUP

**MIXER SETUP:** Change the privileges for making mixer setup settings.

**OUTPORT SETUP:** Change the privileges for making outport setup settings.

**MIDI:** Change the privileges for making MIDI settings.

## ⑮ Create

Creates the user key.

## ⑯ Cancel

Closes the window.

# Working with Sessions

---

All of your console's mix settings in M7CL Editor, including Scene and library data, are called Sessions. The following table describes how to handle Sessions.

<b>Creating a new Session</b>	Choose [New Session] from the [File] menu.
<b>Opening a previously saved Session</b>	Choose [Open Session] from the [File] menu.
<b>Saving the current Session</b>	Choose [Save Session] from the [File] menu.
<b>Saving the current Session with a new name</b>	Choose [Save Session As...] from the [File] menu.

When you save a session in the window of an editor, the settings of only that editor will be saved in a file. Session files saved by M7CL Editor have a filename extension of ".YSE". Files in which only the M7CL console data is saved (filename extension ".M7C") can also be handled, allowing you to use a USB storage device to exchange data with the M7CL console.

If you save a Session in the Studio Manager window, all selected Editor settings are saved in a file with a file extension of ".YSM."

**NOTE** *With M7CL V2 Editor, you can open files that include the extension ".M7C" or ".YSE" that have been saved on the M7CL Version 1 console or in M7CL Editor Version 1, but not vice versa. That is, with the M7CL Version 1 console or M7CL Editor Version 1, you cannot open files that have been saved in M7CL V2 Editor.*

## Undo/Redo Function

---

In M7CL Editor, you can cancel the latest operation (Undo) and also cancel the cancellation of the latest operation (Redo). If you perform an Undo operation twice in a row, you can cancel the two most-recent operations. If you perform an Undo operation three times in a row, you can cancel the three most-recent operations. In this way, you can cancel multiple recent operations. The following table describes how to use the Undo/Redo function.

<b>Undo</b>	Choose [Undo] from the [Edit] menu.
<b>Redo</b>	Choose [Redo] from the [Edit] menu.

Please note, however, that after you perform one of the following operations, you cannot successfully undo or redo any previous operation:

- Operations on the M7CL console
- Quitting Studio Manager
- Synchronizing with the M7CL console
- Session operations

**NOTE** *You cannot Undo or Redo the following operations:*

- *Edits in the Setup window*
- *Synchronization*
- *Opening and closing the windows*
- *Resizing or moving the windows*

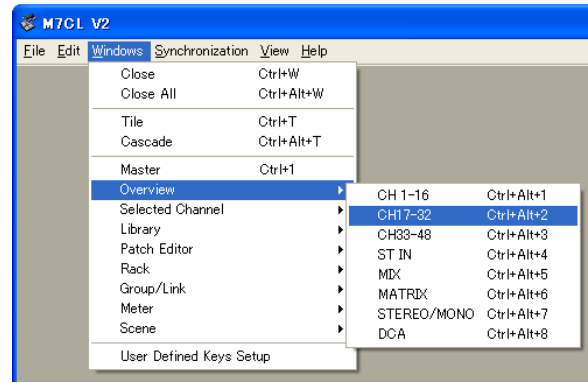
*There are certain other operations that cannot be undone, depending on the function.*

**NOTE** *For library or scene operations, Undo/Redo applies only to the single most recent operation. You cannot undo any operations prior to this. Undo/Redo in these windows is available only using the [UNDO] button within the respective window. Even if you perform a scene recall from the Master window, you cannot use a shortcut or menu operation to undo the recall.*



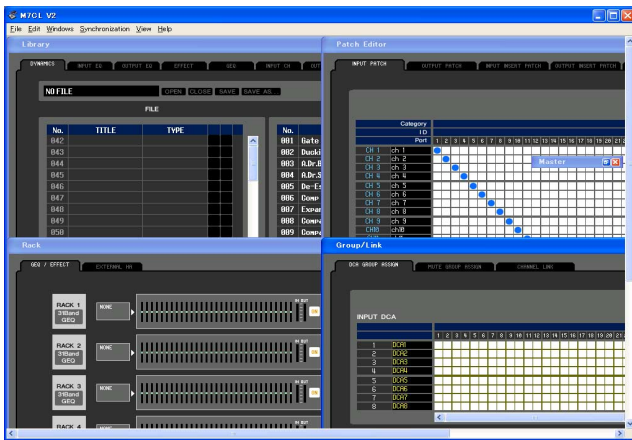
# Window operations

You can select and open each window from the [Windows] menu. For the INPUT CH window and Effect Editor window, use the sub-menu to select the channels or library you want to see.

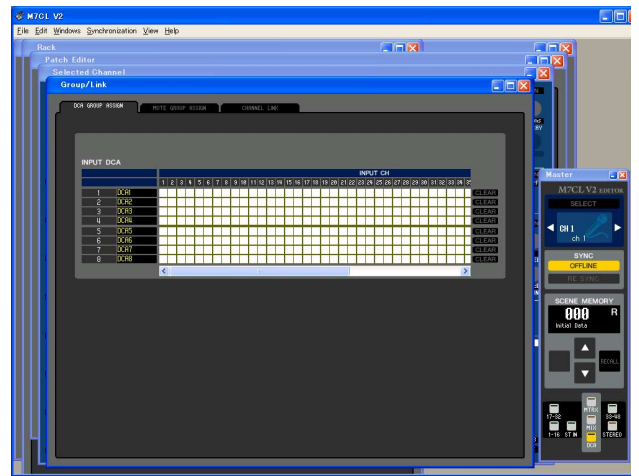


You can choose Tile or Cascade to arrange the windows within the editor.

## ● Tile



## ● Cascade



In the Library window or Scene window, click the tabs located at the top of the window to switch between pages.



# Synchronizing M7CL Editor

---

When M7CL Editor starts up, the parameter settings on the console and the parameter settings in M7CL Editor may be different. Therefore, you must first match the parameter settings on the console with those in M7CL Editor. This operation is called “synchronization.” Follow the steps below to synchronize M7CL Editor.

## 1 Select [Synchronize], then [Re-synchronize].

The following window opens.

## 2 Select whether you want to transfer your settings to M7CL Editor, or vice versa.

At this time, the All Libs option determines whether or not Scene and Library data is synchronized.

**PC → Console:** Transfers the current parameter settings in M7CL Editor to your console.

**Console → PC:** Transfers the current parameter settings of your console to the M7CL Editor.

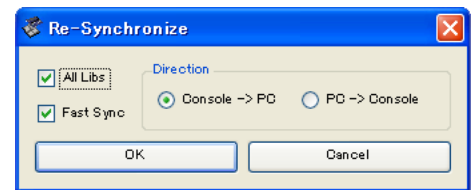
## 3 Click [OK].



*Do not operate the console while synchronization is in progress.*

### NOTE

*If you use the “Total Recall” function in Studio Manager, all selected Editors in Studio Manager are synchronized with the corresponding devices.*



# Offline Edit Function

---

If you do not want to synchronize your console with M7CL Editor, select [Offline Edit] from the [Synchronization] menu. To apply your off-line edits to your console, select [Re-Synchronize] from the [Synchronization] with the PC -> Console option to synchronize the console with M7CL Editor.

The Offline Edit function is also activated when you click the [ONLINE]/[OFFLINE] button in the Sync window.

### NOTE

*Some effect parameters in the console change their displayed values depending on the sampling frequency. If you switch M7CL Editor from OFFLINE to ONLINE, displayed parameter values may change because M7CL Editor loads the sampling frequency from the console and updates the display.*

# Other Functions

---

## ❑ Resetting to the default value (Ctrl+click)

Move the cursor to a control or a parameter value, then hold down the <Ctrl> key and click the mouse button to reset the value to the default (e.g., to reset a pan setting to Center).

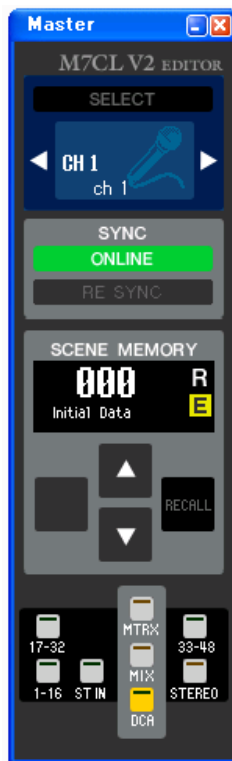
However, the channel faders and the send knobs and bar graphs can be set to  $-\infty$  regardless of the default value.

## ❑ Ctrl+Shift+Click

Move the mouse cursor to a channel fader or to a send knob or bar graph, and click while holding down the <Ctrl> key and <Shift> key to set the nominal value regardless of the default value.



# Master window



In the Master window you can synchronize to the M7CL itself, recall scenes, and display the Overview window. To open this window, choose [Master] from the [Windows] menu.

## CHANNEL SELECT

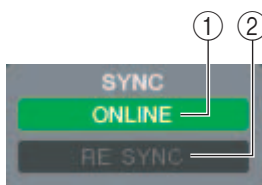


This indicates the number and name of the channel to which your operations will apply. To switch channels, you can either click the [SELECT] button and choose from the list that appears, or you can click the left/right arrow-shaped channel select buttons. You can also use the channel name text box to edit the name.

This is linked with the [SEL] keys on the M7CL itself.  
You can right-click the icon to select a different one.

## SYNC

This indicates the status of connection and synchronization between M7CL Editor and the M7CL.



### ① [ONLINE]/[OFFLINE] button

The ONLINE/OFFLINE status will alternate each time you click this button.

This has the same function as [Synchronization] menu → [Offline Edit]. (↪ p.8)



This indicator is shown when M7CL Editor is correctly connected to the M7CL itself. In this state, the parameters of M7CL Editor and the M7CL itself are linked.



This indicator is shown when M7CL Editor and the M7CL itself are not connected, or when there is a problem with the connection, or when Offline Edit is selected. In this state, the parameters of M7CL Editor and the M7CL itself are not linked.

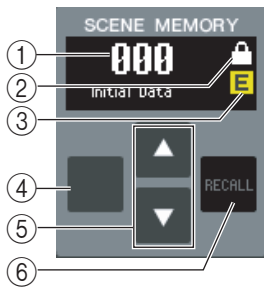
### ② [RE-SYNC] button

Clicking this button opens the Synchronization dialog box.

This has the same function as [Synchronization] menu → [Re-Synchronize]. (↪ p.8)

## □ SCENE MEMORY

Here you can view the currently-recalled scene, and recall or store scenes.

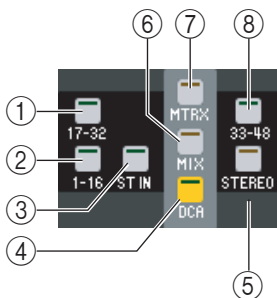


- ① **Scene number display**  
Indicates the number of the scene that is selected for store or recall.
- ② **Protect indicator**  
The lock icon is displayed for scene memories that are protected.
- ③ **Edit indicator**  
The edit indicator will light when you edit the parameters after recalling a scene.
- ④ **[STORE] button**  
This button stores the current scene into the number shown by the scene number display (①).
- ⑤ **[▲]/[▼] buttons**  
These buttons increment or decrement the number shown in the scene number display (①). The scene number display (①) will blink until you actually store or recall, and while blinking will not match the scene number indicated on the M7CL.
- ⑥ **[RECALL] button**  
This button recalls the scene of the number shown in the scene number display (①).

## □ Navigation Keys

These keys open various windows.

**NOTE** These are not linked with the navigation key section on the panel of the M7CL itself.



- ① **[17-32] button**  
Opens the INPUT CH 17–32 window.
- ② **[1-16] button**  
Opens the INPUT CH 1–16 window.
- ③ **[ST IN] button**  
Opens the ST IN window.
- ④ **[DCA] button**  
Opens the DCA window.
- ⑤ **[STEREO] button**  
Opens the STEREO/MONO window.
- ⑥ **[MIX] button**  
Opens the MIX window.
- ⑦ **[MTRX] button**  
Opens the MATRIX window.
- ⑧ **[33-48] button**  
Opens the INPUT CH 33–48 window. This is available only during offline editing and when 48 is selected as the number of input channels in the Mixer Setup window, or when editing online with the M7CL-48.

# Overview window

## INPUT CH window



This window displays the mix parameters of INPUT CH 1–16, 17–32, or 33–48(\*). The parameters shown in the window can be selected from the [View] menu or the menu that appears when you right-click in the window.

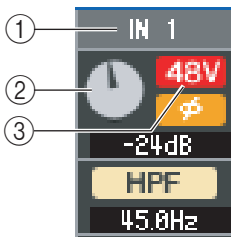
You can access this window in the following ways.

- From the [Windows] menu, choose [Overview] and select “CH1-16” / “CH17-32” / “CH33-48”(\*)
- Use the navigation keys in the Master window to turn on the [1-16] button / [17-32] button / [33-48] button(\*)
- On the M7CL itself, assign one of the USER DEFINED KEYS to [1-16]/[17-32]/[33-48](\*) in [INPUT CH] of [M7CL EDITOR CONTROL], and execute the function

(\*) INPUT CH 33-48 can be viewed only if 48 is selected in the Input Channels field of the Mixer Setup window when editing offline, or when editing online with the M7CL-48.

### ① Input patch

Click here to select the input source that will be assigned to the INPUT CH, from the following choices.



NONE	No assignment
IN1-IN48(*)	INPUT jacks 1–48(*)
STIN1L-STIN4R	L/R channels of ST IN jacks 1–4
SLOT1-1, SLOT1-2...SLOT3-15, SLOT3-16	Input channels of an I/O card installed in slots 1–3
RACK1A, RACK1B...RACK8R(B)	L/R outputs of Rack 1–8

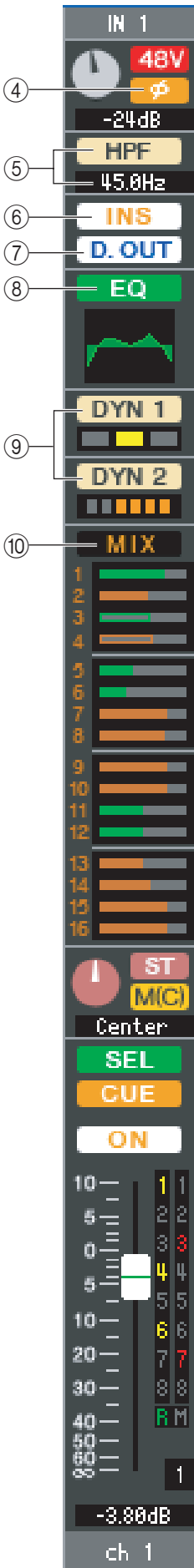
(\*) AD33–48 (INPUT jacks 33-48) can be viewed only if 48 is selected in the Input Channels field of the Mixer Setup window when editing offline, or when editing online with the M7CL-48.

### ② HA GAIN

Drag the knob in the screen to adjust the gain of the internal head amp or of the external head amp (AD8HR) patched to the INPUT CH.

### ③ 48V

Switches on/off the phantom power (+48V) of the internal head amp or of the external head amp (AD8HR) patched to the INPUT CH.



④ **Ø (Phase)**

Inverts the phase of the signal after AD conversion.

⑤ **HPF (High Pass Filter)**

Switches the high pass filter on/off. You can drag the numeric value up or down to edit the cutoff frequency.

⑥ **INS (Insert)**

Enables/disables the insert-in.

⑦ **D. OUT (Direct out)**

Enables/disables the direct output.

⑧ **EQ (Equalizer)**

Switches the EQ on/off. The graph immediately below the button shows the approximate response of the EQ. You can drag within the graph to edit the response of the EQ. To reset the EQ to flat response, hold down the <Ctrl> key of your computer keyboard and click the graph (The HPF setting will remain).

⑨ **DYN1/DYN2 (Dynamics 1/Dynamics 2)**

Turns the two dynamics processors on/off.

If Gate is assigned (Dynamics 1 only), the status of the gate is shown immediately below the button.

<b>Gate status indication</b>				
<b>On/off status</b>	On	On	On	Off
<b>Open/closed status</b>	Closed	Open	Open	—
<b>Remarks</b>	Gain reduction amount is 30 dB or more	Gain reduction amount is 0–30 dB	Gain reduction amount is 0 dB	—

If something other than Gate is assigned, a GR meter is shown immediately below the button, and the amount of gain reduction is shown while this is on.

The type for each dynamics processor can be selected in the Selected Channel window.

⑩ **MIX/MATRIX SEND**

Switches between the send indications to MIX buses 1–16 and to MATRIX buses 1–8.

The bar graphs located immediately below the button show the send level of the signals sent from the INPUT CH to VARI type MIX/MATRIX buses. You can also drag the bar graph to left or right to set the send level. While you drag the bar graph, the send level is shown in the numerical display area for PAN/TO STEREO MONO (⑪).

You can set the minimum value ( $-\infty$  dB) by holding down the <Ctrl> key of your computer keyboard and clicking the bar graph, or set the nominal value (0.00 dB) by holding down the <Ctrl> key and <Shift> key and clicking the bar graph.

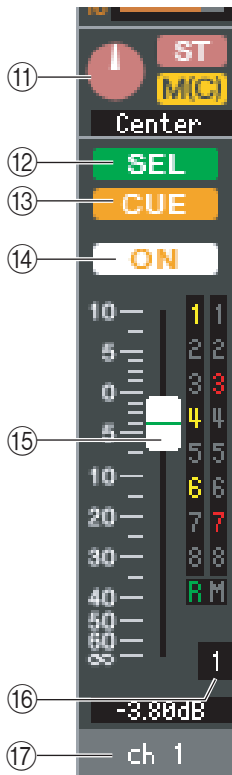
The bar graph display will change according to the send position (pre/post) and on/off status of the signal sent from the INPUT CH to the MIX/MATRIX buses.

To switch a send on/off, click the channel number located at the left of the bar graph.

**NOTE** For FIXED-type MIX buses, the bar graph is fixed at nominal level (0 dB), and only the on/off status is shown.



- Pre/on (green)
- Pre/off (green)
- Post/on (yellow)
- Post/off (yellow)



### 11 PAN/TO STEREO MONO

The **PAN knob** adjusts the panning of the signal that is sent from the INPUT CH to the STEREO bus L/R channels (or the L/C/R channels). You can set this to the center value by holding down the <Ctrl> key of your computer keyboard and clicking this knob.

The **[ST] button** is an on/off switch for the signal that is sent from the INPUT CH to the STEREO bus.

The **[M(C)] button** is an on/off switch for the signal that is sent from the INPUT CH to the MONO bus.

If LCR MODE is selected in the Selected Channel window, the **[LCR]** button will appear instead of the **[ST]** button and **[M(C)]** button, and the **[LCR]** button will be an on/off switch for the signal that is sent from the INPUT CH to the LCR bus.

### 12 SEL (Select)

Selects the INPUT CH for which you want to perform operations. This is linked with the INPUT section **[SEL]** keys on the M7CL's panel.

### 13 CUE

This button cue-monitors the signal of the INPUT CH. This is linked with the INPUT section **[CUE]** keys on the M7CL's panel.

### 14 ON

Switches the INPUT CH on/off. This is linked with the INPUT section **[ON]** keys on the M7CL's panel.

### 15 Fader

Adjusts the input level of the INPUT CH. When the M7CL itself is in other than SENDS ON FADER mode, this is linked with the INPUT section faders of the M7CL's panel.

The current fader value is shown in the numerical box located immediately below the fader.

You can set this to the minimum value ( $-\infty$  dB) by holding down the <Ctrl> key of your computer keyboard and clicking the fader knob, or set it to the nominal value (0.00 dB) by holding down the <Ctrl> key and <Shift> key and clicking the fader knob.

The numbers and alphabetical letters at the right of the fader indicate the DCA group and mute groups to which that channel belongs, and show the Recall Safe and Mute Safe status of the channel.



The numbers of DCA groups to which this channel belongs are shown in yellow.

The numbers of mute groups to which this channel belongs are shown in red.

If this channel is set to Recall Safe, the R character is shown in green.

If this channel is set to Mute Safe, the M character is shown in green.

### 16 Channel number

This is the number of the INPUT CH. You can open the Selected Channel window for this channel by double-clicking this number. If you hold down the <Ctrl> key of your computer keyboard and double-click this, the Selected Channel window will open as an additional view.

### 17 Channel name

This is a text box that displays the channel name. You can also edit the channel name in this text box.

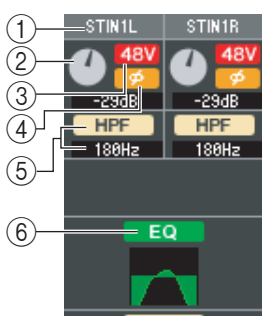
# ST IN window



In this window you can view and edit the mix parameters of ST IN channels 1–4. The parameters shown in the window can be selected from the [View] menu or the menu that appears when you right-click in the window.

You can access this window in the following ways.

- From the [Windows] menu, choose [Overview] and then choose “ST IN”
- Use the navigation keys in the Master window to turn on the [ST IN] button



## ① INPUT PATCH

Selects the input source that will be assigned to the ST IN channel. The input sources that can be assigned are the same as for an INPUT CH (➔ p.11).

## ② HA GAIN

Drag the knob in the screen to adjust the gain of the internal head amp or of the external head amp (AD8HR) patched to the ST IN channel.

## ③ 48V

Switches on/off the phantom power (+48V) of the internal head amp or of the external head amp (AD8HR) patched to the ST IN channel.

## ④ Ø (Phase)

Inverts the phase of the signal after AD conversion.

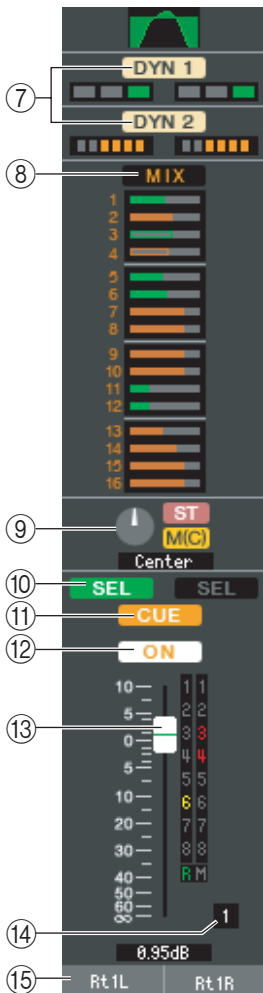
## ⑤ HPF (High Pass Filter)

Switches the high pass filter on/off. You can drag the numeric value up or down to edit the cutoff frequency.

## ⑥ EQ (Equalizer)

Switches the EQ on/off (the L/R settings are linked). This is the same as the equalizer for INPUT CH (➔ p.12).





⑦ **DYN1/DYN2 (Dynamics 1//Dynamics 2)**

These buttons switch the two dynamics processors on/off. This is the same as the dynamics 1/dynamics 2 for INPUT CH (➡ p.12).

⑧ **MIX/MATRIX SEND**

Switches between the send indications to MIX buses 1–16 or to MATRIX buses 1–8. This is the same as the mix/matrix send for INPUT CH (➡ p.12).

⑨ **BALANCE**

The **BALANCE knob** adjusts the balance of the signal that is sent from the ST IN channel to the STEREO bus L/R channels (or the L/C/R channels). Other than the BALANCE knob, this is the same as PAN/TO STEREO MONO for an INPUT channel (➡ p.13).

⑩ **SEL (Select)**

Selects the ST IN channel for which you want to perform operations. (L and R can be selected separately.) This is linked with the ST IN section [SEL] keys on the M7CL's panel.

⑪ **CUE**

This button cue-monitors the signal of the ST IN channel (L/R are linked). This is linked with the ST IN section [CUE] keys on the M7CL's panel.

⑫ **ON**

Switches the ST IN channel on/off (the L/R settings are linked). This is linked with the ST IN section CH [ON] keys on the M7CL's panel.

⑬ **Fader**

Adjusts the input level of the ST IN channel. When the M7CL itself is in other than SENDS ON FADER mode, this is linked with the INPUT section faders of the M7CL's panel.

The current fader value is shown in the numerical box located immediately below the fader. This is the same as the fader for INPUT CH (➡ p.13).

⑭ **Channel number**

This is the number of the ST IN channel. You can double-click this number to open the Selected Channel window for this channel. If you hold down the <Ctrl> key of your computer keyboard and double-click this, the Selected Channel window will open as an additional view.

⑮ **Channel name**

This is a text box that displays the channel name. You can also edit the channel name in this text box.



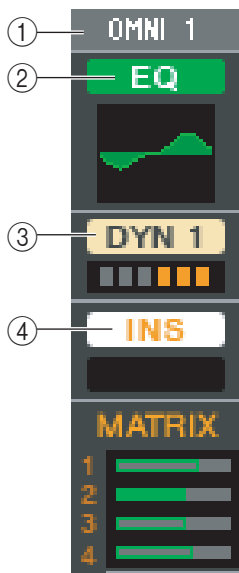
# MIX window



In this window you can view and edit the parameters of MIX channels 1–16. The parameters shown in the window can be selected from the [View] menu or the menu that appears when you right-click in the window.

You can access this window in the following ways.

- From the [Windows] menu, choose [Overview] and then choose “MIX”
- Use the navigation keys in the Master window to turn on the [MIX] button



## ① OUTPUT PATCH

Click here to select the output port that will be assigned to the MIX channel, from the following choices.

OMNI1–OMNI16	OMNI jacks 1–16
SLOT1-1, SLOT1-2...SLOT3-16	Input channels of an I/O card installed in slot 1–3
RACK1A, RACK1B...RACK8R(B)	L/R outputs of Rack 1–8
2TROUT L, 2TROUT R	L/R channels of the 2TR OUT DIGITAL jack

If multiple patches have been made, only the first port is shown.

If you change the patching in this window, the port that had been assigned until then will be cancelled, and only the newly selected port will be assigned.

## ② EQ (Equalizer)

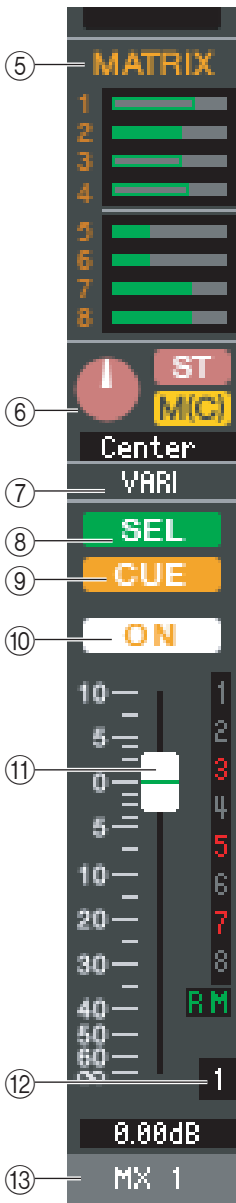
Switches the EQ on/off. This is the same as the equalizer for INPUT CH (➔ p.12).

## ③ DYN1(Dynamics 1)

Switches the dynamics processor on/off. This is the same as the dynamics 2 for INPUT CH (➔ p.12).

## ④ INS (Insert)

Enables/disables the insert-in.



### ⑤ MATRIX SEND

These bar graphs indicate the send levels of the signals sent from the MIX channel to MATRIX 1–8 bus. You can also adjust the send levels by dragging a bar graph to left or right. While you drag the bar graph, the send level is shown in the numerical display area for TO STEREO/MONO.

You can set the minimum value ( $-\infty$  dB) by holding down the <Ctrl> key of your computer keyboard and clicking the bar graph, or set the nominal value (0.00 dB) by holding down the <Ctrl> key and <Shift> key and clicking the bar graph.

The bar graph display will change as follows according to the send position (pre/post) and on/off status of the signal sent from the MIX channel to the MATRIX buses.

To switch a send on/off, click the channel number located at the left of the bar graph.

- Pre/on (green)
- Pre/off (green)
- Post/on (yellow)
- Post/off (yellow)

### ⑥ PAN/BALANCE

The **PAN knob** adjusts the panning of the signal that is sent from the mix channel to the STEREO bus L/R channels (or the L/C/R channels). You can set this to the center value by holding down the <Ctrl> key of your computer keyboard and clicking this knob. If assigned as a stereo bus, this adjusts the balance of the odd-numbered channel and even-numbered channel. The stereo bus setting can be made in Mix Bus Setup of the Mixer Setup screen.

The **[ST] button** is an on/off switch for the signal that is sent from the mix channel to the STEREO bus.

The **[MONO] button** is an on/off switch for the signal that is sent from the mix channel to the MONO bus.

If LCR MODE is selected in the Selected Channel window, the **[LCR] button** will appear instead of the [ST] button and [MONO] button, and the [LCR] button will be an on/off switch for the signal that is sent from the mix channel to the LCR bus.

### ⑦ VARI/FIXED

Indicates the type (VARI or FIXED) of the currently selected MIX bus. This parameter can be switched in Mix Bus Setup of the Mixer Setup screen.

### ⑧ SEL (Select)

Selects the MIX channel for which you want to make settings.

### ⑨ CUE

This button cue-monitors the signal of the MIX channel.

### ⑩ ON

Switches the MIX channel on/off.

### ⑪ Fader

Adjusts the output level of the MIX channel. The current fader value is shown in the numeric box immediately below the fader. You can set this to the minimum value ( $-\infty$  dB) by holding down the <Ctrl> key of your computer keyboard and clicking the fader knob, or set it to the nominal value (0.00 dB) by holding down the <Ctrl> key and <Shift> key and clicking the fader knob.

The numbers and alphabetical letters at the right of the fader indicate the mute groups to which that channel belongs, and show the Recall Safe and Mute Safe status of the channel.



The numbers of mute groups to which this channel belongs are shown in red.

If this channel is set to Recall Safe, the R character is shown in green.

If this channel is set to Mute Safe, the M character is shown in green.

### ⑫ Channel number

Indicates the number of the MIX channel. You can double-click this number to open the Selected Channel window for this channel. If you hold down the <Ctrl> key of your computer keyboard and double-click this, the Selected Channel window will open as an additional view.

### ⑬ Channel name

This is a text box that displays the channel name. You can also edit the channel name in this text box.

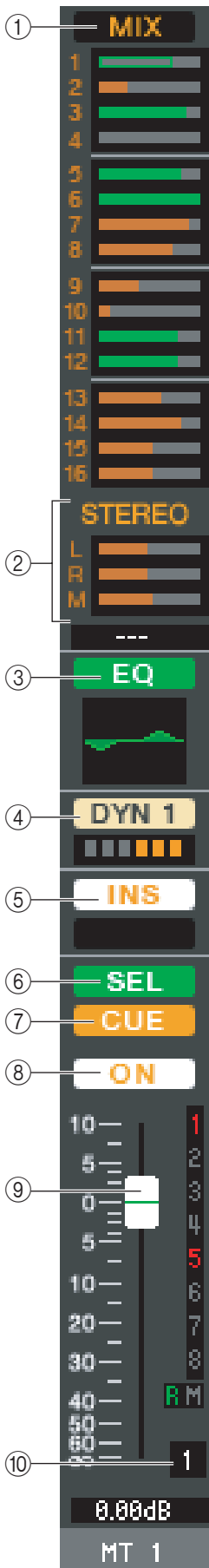
# MATRIX window



In this window you can view and edit the parameters of MATRIX channels 1–8. The parameters shown in the window can be selected from the [View] menu or the menu that appears when you right-click in the window.

You can access this window in the following ways.

- From the [Windows] menu, choose [Overview] and then choose “MATRIX”
- Use the navigation keys in the Master window to turn on the [MTRX] button



### ① MIX/CH/ST IN (Send levels from the MIX/INPUT CH/ST IN to the MATRIX bus)

This switches between indicating the sends from MIX channels 1–16, the sends from INPUT CH 1–16 / 17–32 / 33–48 (\*), and the sends from ST IN.



The bar graphs located immediately below the button indicate/adjust the level of the signal that is sent from each channel to the MATRIX bus. The method of operation and the meaning of the display are the same as for (5) MATRIX in the MIX window (➔ p.17).

(\*) INPUT CH 33–48 can be viewed only if 48 is selected in the Input Channels field of the Mixer Setup window when editing offline, or when editing online with the M7CL-48.

### ② STEREO (Send levels from the STEREO channels to the MATRIX bus)

Here you can view and edit the send levels of the signals sent from the STEREO channels to the MATRIX bus. While you drag the bar graph, the send level is shown in the numerical display area immediately below. The method of operation and the meaning of the display are the same as for (5) MATRIX in the MIX window (➔ p.17).

### ③ EQ (Equalizer)

Switches the EQ on/off. The graph immediately below the button shows the approximate response of the EQ. This is the same as the equalizer for INPUT CH (➔ p.12).

### ④ DYN1 (Dynamics 1)

Switches the dynamics processor on/off. This is the same as the dynamics 2 for INPUT CH (➔ p.12).

### ⑤ INS (Insert)

Enables/disables the insert-in.

### ⑥ SEL (Select)

Selects the MATRIX channel for which you want to make settings.

### ⑦ CUE

This button cue-monitors the signal of the MATRIX channel.

### ⑧ ON

This switches the MATRIX channel on/off.

### ⑨ Fader

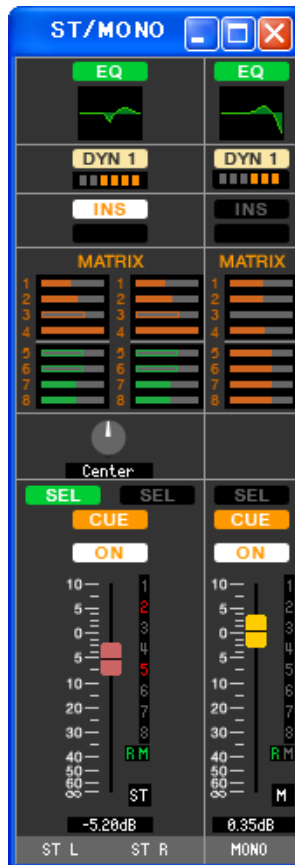
This adjusts the output level of the MATRIX channel. The current fader value is shown in the numeric box immediately below the fader.

The numbers and alphabetical letters at the right of the fader indicate the mute groups to which that channel belongs, and show the Recall Safe and Mute Safe status of the channel. (For the significance of the numbers and alphabetical letters, see ➔ p.13).

### ⑩ Channel number

Indicates the number of the MATRIX channel. You can double-click this number to open the Selected Channel window for this channel. If you hold down the <Ctrl> key of your computer keyboard and double-click this, the Selected Channel window will open as an additional view.

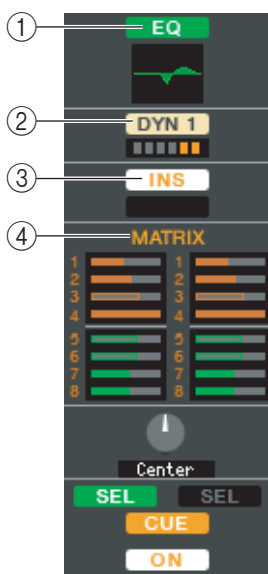
# STEREO/MONO window



In this window you can view and edit the parameters of the STEREO and MONO channels. The parameters shown in the window can be selected from the [View] menu or the menu that appears when you right-click in the window.

You can access this window in the following ways.

- From the [Windows] menu, choose [Overview] and then choose “STEREO/MONO”
- Use the navigation keys in the Master window to turn on the [STEREO] button



## ① EQ (Equalizer)

Switches the EQ on/off (the L/R settings are linked). This is the same as the equalizer for INPUT CH (➔ p.12).

## ② DYN1 (Dynamics 1)

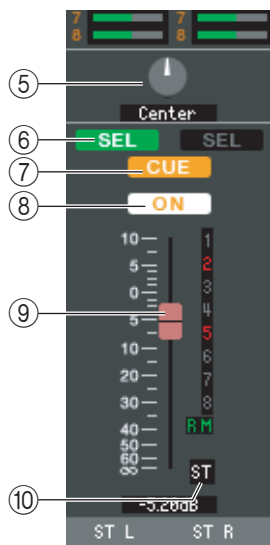
Switches the dynamics processor on/off. This is the same as the dynamics 2 for INPUT CH (➔ p.12).

## ③ INS (Insert)

Enables/disables the insert-in. (The L/R settings are linked.)

## ④ MATRIX SEND

Here you can view and edit the send levels of the signals sent from the STEREO/MONO channel to MATRIX 1–8 bus. The method of operation and the meaning of the display are the same as for MATRIX in the MIX window (➔ p.17).



⑤ **BALANCE**

Adjusts the left/right balance of the STEREO channel.

⑥ **SEL (Select)**

Selects the channel for which you want to make settings. (You can specify L and R independently.) This is linked with the STEREO/MONO MASTER section [SEL] keys on the M7CL's panel.

⑦ **CUE**

This button cue-monitors the signal of the STEREO/MONO channel. This is linked with the STEREO/MONO MASTER section [CUE] keys on the M7CL's panel.

⑧ **ON**

This switches the STEREO/MONO channel on/off. This is linked with the STEREO/MONO MASTER section [ON] keys on the M7CL's panel.

⑨ **Fader**

Adjusts the output level of the STEREO/MONO channel. This is linked with the STEREO/MONO MASTER section faders of the M7CL's panel.

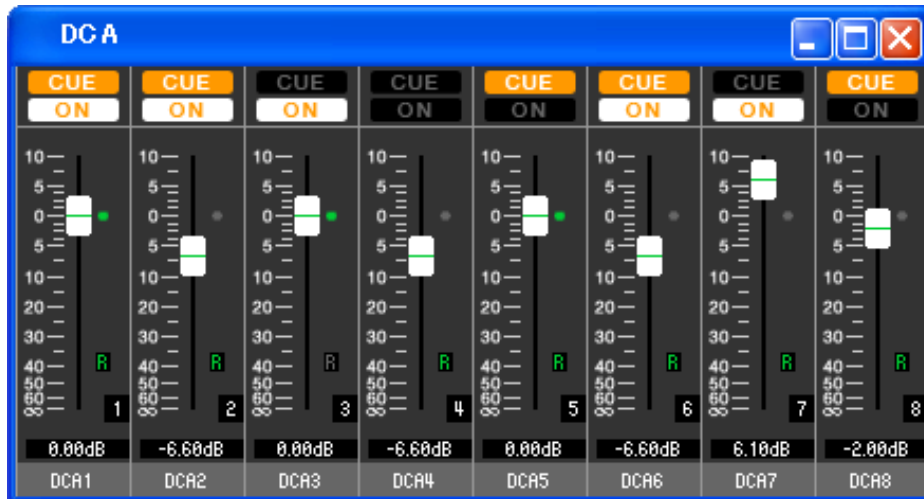
The current fader value is shown in the numeric box immediately below the fader.

The numbers and alphabetical letters at the right of the fader indicate the mute groups to which that channel belongs, and show the Recall Safe and Mute Safe status of the channel. (For the significance of the numbers and alphabetical letters, see ➔ p.15).

⑩ **Channel number**

This is the channel number (ST or M). You can double-click this number to open the Selected Channel window for this channel. If you hold down the <Ctrl> key of your computer keyboard and double-click this, the Selected Channel window will open as an additional view.

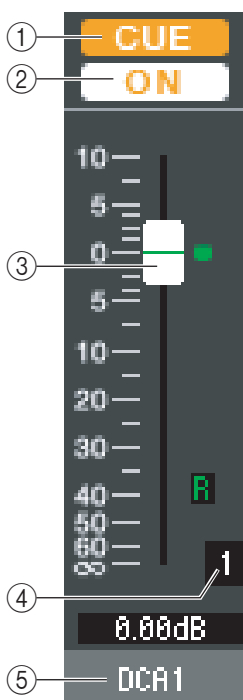
# DCA window



In this window you can view and edit the parameters of DCA groups 1–8.

You can access this window in the following ways.

- From the [Windows] menu, choose [Overview] and then choose “DCA”
- Use the navigation keys in the Master window to turn on the [DCA] button



## ① CUE

This button cue-monitors all channels that are assigned to the DCA group.

## ② ON

If you turn this on, all channels assigned to the DCA group will be turned on. If you turn this off, no signal will be output from the channels assigned to the DCA group.

## ③ DCA fader

This fader adjusts the level of the DCA group.

The current fader value is shown in the numeric box immediately below the fader.

You can set this to the minimum value ( $-\infty$  dB) by holding down the <Ctrl> key of your computer keyboard and clicking the fader knob, or set it to the nominal value (0.00 dB) by holding down the <Ctrl> key and <Shift> key and clicking the fader knob. If the fader is at nominal level, the green indicator at the right of the fader will light.

If a DCA group is set to Recall Safe, the R character at the lower right of the fader is displayed in green.

## ④ DCA number

This is the number of the DCA group.

## ⑤ DCA group name

This is a text box that displays the DCA group name. You can also edit the DCA group name in this text box.



# Selected Channel window

Here you can set the parameters of the currently selected input channel (INPUT CH 1–48<sup>(\*)</sup>, ST IN channels 1–4) or output channel (MIX channels 1–16, MATRIX channels 1–8, STEREO/MONO channels).

You can access this window in the following ways.

- From the [Windows] menu, choose [Selected Channel] and select “MAIN VIEW”
- Double-click the channel number in one of the Overview windows
- On the M7CL itself, assign one of the USER DEFINED KEYS to [1-16]/[17-32]/[33-48]<sup>(\*)</sup> in [SEL CH] of [M7CL EDITOR CONTROL], and execute the function

**NOTE** By choosing [Selected Channel] from the [Windows] menu and then selecting “ADDITIONAL VIEW,” you can view a window for a channel that is not selected. This ADDITIONAL VIEW is not linked with [SEL] key operations on the panel of the M7CL.

The type of parameters that can be edited in this window depends on the type of the currently selected channel. The parameters of the Selected Channel window are explained below, in the order of input channels (input channels 1–48, ST IN channels 1–4), MIX channels, MATRIX channels, and STEREO/MONO channels.

(\*) INPUT CH 33-48 can be viewed only if 48 is selected in the Input Channels field of the Mixer Setup window when editing offline, or when editing online with the M7CL-48.

## If an input channel is selected

### ● INPUT CH window

The screenshot shows the 'Selected Channel' window for 'CH 1'. The interface includes the following sections:

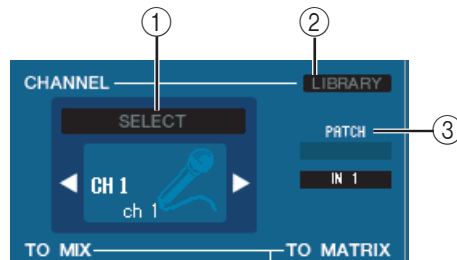
- CHANNEL:** SELECT, CH 1, ch 1
- TO MIX:** 1 (-2.30dB), 2 (-11.85dB), 3 (-11.20dB), 4 (-9.65dB), 5 (-29.70dB), 6 (-29.90dB), 7 (0.00dB), 8 (-2.35dB), 9, 10, 11/12 (Center, -15.00dB), 13 (-14.25dB), 14 (-10.50dB), 15/16
- TO MATRIX:** 1 (-17.25dB), 2 (-10.20dB), 3 (-11.90dB), 4 (-17.75dB), 5 (Center), 6 (-18.20dB), 7 (Center), 8 (-12.40dB)
- HA:** 48V, -24dB
- HPF:** 45.0Hz, ON
- DYNAMICS 1:** TYPE, GRATE, IN, OUT, GR, THRESHOLD (-20dB to -70dB), RANGE (-50dB to -10dB), DECAY (300ms, 2.33ms, HOLD), ATTACK (8ms, 2.33ms)
- EQ:** 1, 2, 3, 4 bands, FREQUENCY, GAIN
- DYNAMICS 2:** TYPE, COMPRESSOR, IN, OUT, GR, THRESHOLD (-8dB to -70dB), RATIO (2.5:1, 2), KNEE, ATTACK (30ms, 2.33ms), RELEASE, GAIN (0.0dB, 0.0dB)
- INSERT:** ON, OUT, IN, POINT, PRE EQ
- DIRECT OUT:** ON, POINT, PRE HPF
- DCA MUTE:** ON, 1-8 buttons, MUTE SAFE (SAFE), MUTE SAFE (SAFE)

● ST IN channel window



**NOTE** Unless otherwise specified, the parameters explained below are common to INPUT CH 1–48 and ST IN channels 1–4.

□ CHANNEL SELECT (Channel selection)



① **SELECT (Channel selection)**

Indicates the number and name of the channel you are editing. To switch channels, use the SELECT button or the triangle buttons at left and right. The channel selected in the Main View is linked with the [SEL] keys in the INPUT section of the M7CL’s panel. You can right-click the icon and select the desired choice. You can also edit the channel name in the text box.

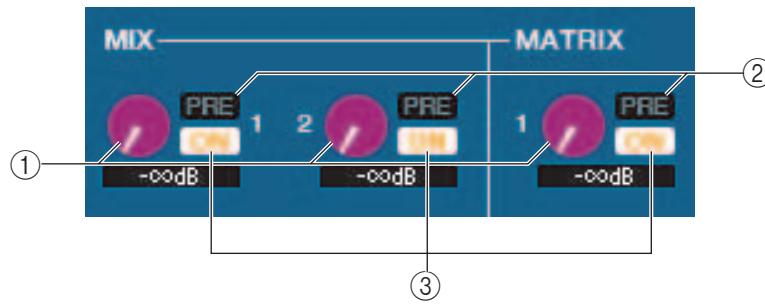
② **LIBRARY**

Accesses the Input Channel Library. Click this button to open the INPUT CH page of the Library window.

③ **INPUT PATCH**

Selects the input source assigned to the input channel (for the selectable input sources, ➡ p.11).

## □ MIX/MATRIX SEND



### ① MIX send level

This adjusts the send level of the signal sent from the input channel to VARI-type MIX bus and MATRIX bus. The current value is shown in the numerical box immediately below.

### ② PRE (Pre/Post)

This selects PRE or POST as the point from which the signal is sent from the input channel to the MIX bus and MATRIX bus. The point will be PRE POINT when this is on, and POST FADER when this is off. The PRE POINT setting can be specified in the Mixer Setup screen.

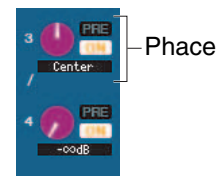
### ③ ON (MIX send on/off)

This is an on/off switch for the signal sent from the input channel to the MIX bus and MATRIX bus.

#### HINT

- If MIX buses or MATRIX buses are being used in stereo, the odd-numbered knob will be PAN.

Knob of odd-numbered side

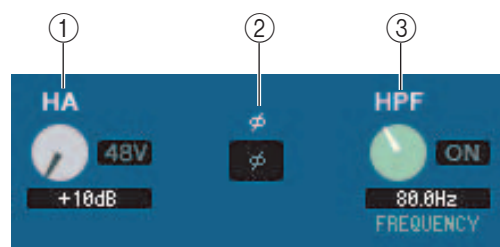


- If the FIXED type is selected for the MIX bus, only the ON button is valid.



- The stereo/mono setting and the VARI type / FIXED type setting can be made in the Mixer Setup screen.

## □ HA GAIN/Ø/HPF



### ① HA (HA Gain)

Adjusts the gain of the internal head amp or of the external head amp (AD8HR) patched to the input channel. The current value is shown in the numerical box below the knob. You can set this to the default value (+10 dB) by holding down the <Ctrl> key and clicking the knob. You can also use the [48V] button to switch phantom power on/off.

### ② Ø (Phase)

Inverts the phase of the signal after AD conversion.

### ③ HPF (High Pass Filter)

Use the [ON] button at the right to switch the high-pass filter on/off. You can use the knob at left to adjust the cutoff frequency. The current value is shown in the numerical box below the knob. An indication of "H" will appear on the EQ graph of the equalizer.

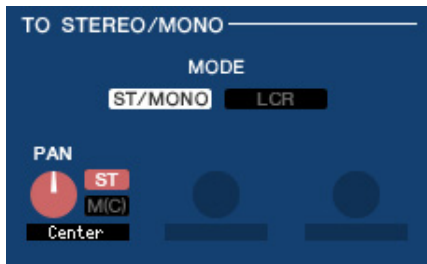
## TO STEREO/MONO

Here you can specify how the signal will be sent from the input channel to the STEREO bus / MONO bus.

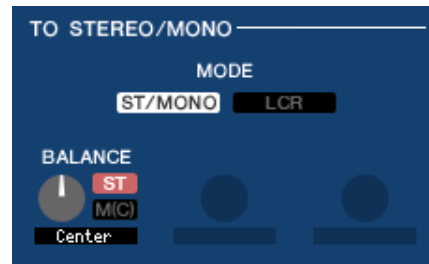
### MODE

- **ST/MONO button**

When this button is on, the signal will be sent to the STEREO L/R bus and independently to the MONO bus.



[INPUT CH 1-48]

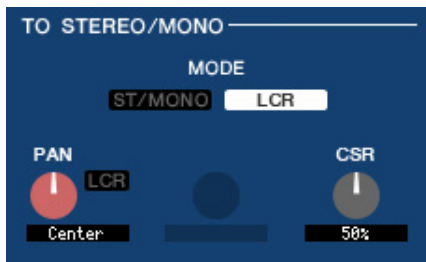


[ST IN channel 1-4]

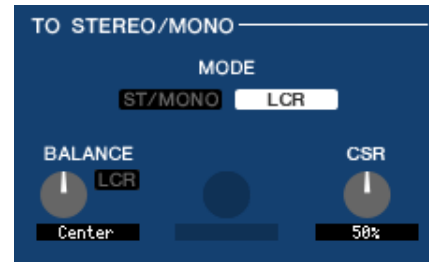
<b>PAN (BALANCE for ST IN)</b>	Adjusts the panning of the signal sent from the input channel to the STEREO bus L/R channels. You can set this to the center position by holding down the <Ctrl> key of the computer keyboard and clicking the knob. This is linked with the [PAN] encoder in the SELECTED CHANNEL section of the M7CL panel.
<b>ST</b>	Switches the signal sent from the input channel to the STEREO bus on/off.
<b>M(C)</b>	Switches the signal sent from the input channel to the MONO bus on/off.

- **LCR button**

When this button is on, the signal will be sent to the L/C/R buses which work in conjunction with each other.



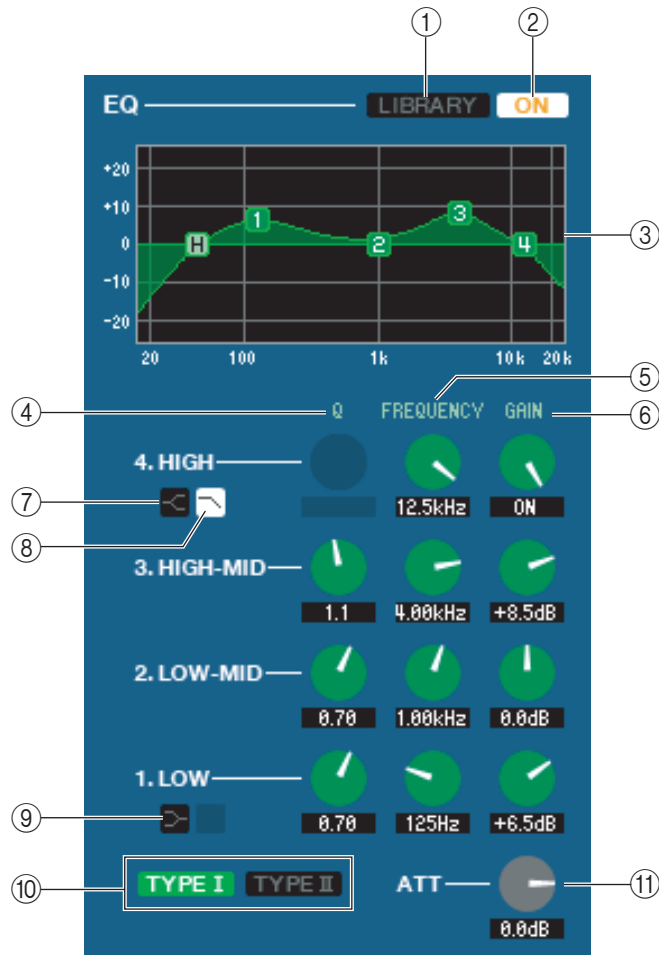
[INPUT CH 1-48]



[ST IN channel 1-4]

<b>PAN (BALANCE for ST IN)</b>	Adjusts the panning of the signal that is sent from the input channel to each of the L/C/R channels. You can set this to the center position by holding down the <Ctrl> key of the computer keyboard and clicking the knob. This is linked with the [PAN] encoder in the SELECTED CHANNEL section of the M7CL panel.
<b>CSR (Center Side Ratio)</b>	Adjusts the proportion of the CENTER channel level relative to the STEREO bus L/R in a range of 0-100%.

## EQ



### ① LIBRARY

Accesses the INPUT EQ page of the LIBRARY window.

### ② ON

Switches the EQ on/off.

### ③ EQ graph

Indicates the response for the EQ of the currently selected channel. To reset the EQ to flat response, hold down the <Ctrl> key of your computer keyboard and click the graph (The HPF setting will remain).

### ④ Q

### ⑤ FREQUENCY

### ⑥ GAIN

These knobs adjust the Q, center frequency, and boost/cut amount for the four bands LOW, LO-MID, HI-MID, and HIGH.

### ⑦ HIGH shelving

If this button is on, the HIGH EQ will be switched to a shelving type (the Q knob of the HIGH EQ will disappear).

### ⑧ LPF (Low Pass Filter)

If this button is on, the HIGH EQ will function as a low pass filter. The Q knob of the HIGH EQ will disappear, and the GAIN knob will act as the low pass filter on/off switch.

### ⑨ LOW shelving

If this button is on, the LOW EQ will be switched to a shelving type (the Q knob of the LOW EQ will disappear).

### ⑩ TYPE I/TYPE II (EQ type)

Selects either TYPE I (the algorithm used by previous digital mixers) or TYPE II (a newly developed algorithm) as the EQ type.

## ⑪ ATT (Attenuation)

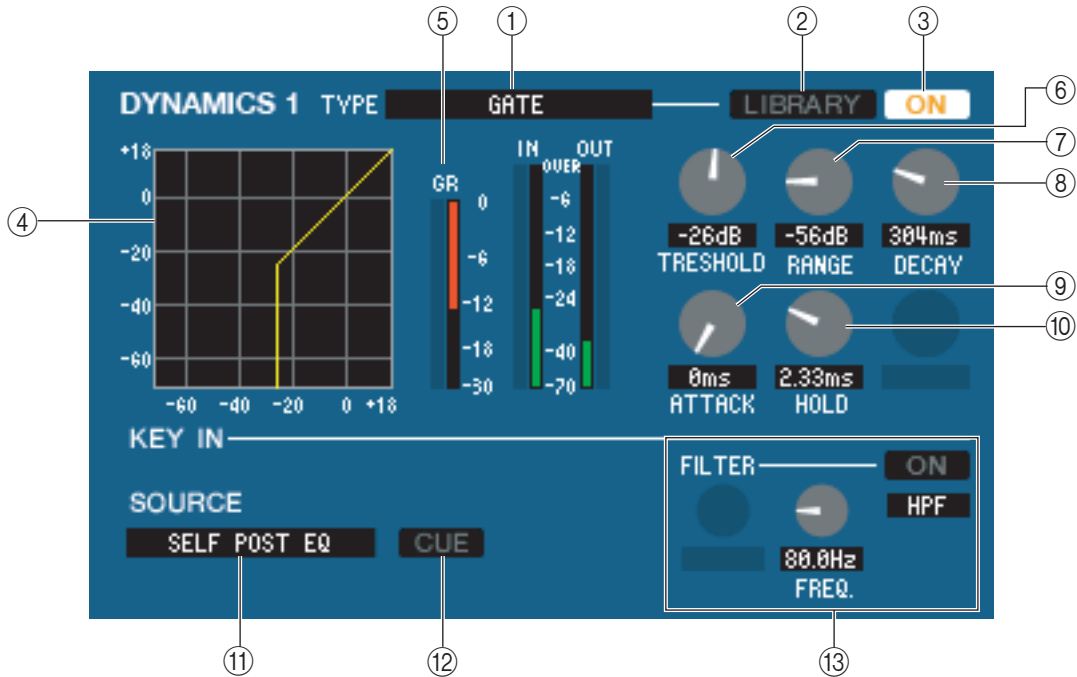
Adjusts the amount of attenuation/gain.

## □ DYNAMICS1/2

You can select one of the following types for each of the two dynamics processors.

<b>DYNAMICS1:</b>	GATE, DUCKING, EXPANDER, COMPRESSOR
<b>DYNAMICS2:</b>	COMPRESSOR, COMPANDER-H, COMPANDER-S, DE-ESSER

### If GATE/DUCKING is selected



### ① TYPE

Indicates the type of the currently selected gate. You can click here to select the type.

### ② LIBRARY

This button accesses the dynamics library. Clicking this button will open the DYNAMICS page of the LIBRARY window.

### ③ ON

This button switches the gate on/off.

### ④ Response curve

Indicates the response for the gate of the currently selected channel.

### ⑤ GR meter

This meter indicates the amount of gain reduction.

### ⑥ THRESHOLD (Threshold level)

Specifies the level at which the gate will open and close. The gate will open when the key-in signal exceeds this level, and will close when the signal falls below this level.

### ⑦ RANGE

Specifies the amount by which the signal is attenuated while the gate is closed.

### ⑧ DECAY

Specifies the time over which the gate will close after the hold time has elapsed.

### ⑨ ATTACK

Specifies the time from when the key-in signal exceeds the threshold level until the gate opens.



⑩ **HOLD**

Specifies the time that the gate will remain open after the key-in signal falls below the threshold.

⑪ **KEY IN SOURCE**

Click this to select one of the following signals to use as the key-in source.

<b>SELF PRE EQ</b>	The pre-EQ signal of the currently selected input channel
<b>SELF POST EQ</b>	The post-EQ signal of the currently selected input channel
<b>MIX OUT 13–16</b>	The output signal of the corresponding MIX channel immediately before the output attenuation
<b>CH 1–48 POST EQ</b>	The post-EQ signal of the corresponding input channel (however, you can only choose channels belonging to the same group, within the seven groups CH1–8, CH9–16, CH17–24, CH25–32, CH33–40, CH41–48, and STIN1L–STIN4R).
<b>STIN1L–STIN4R POST EQ</b>	

⑫ **CUE**

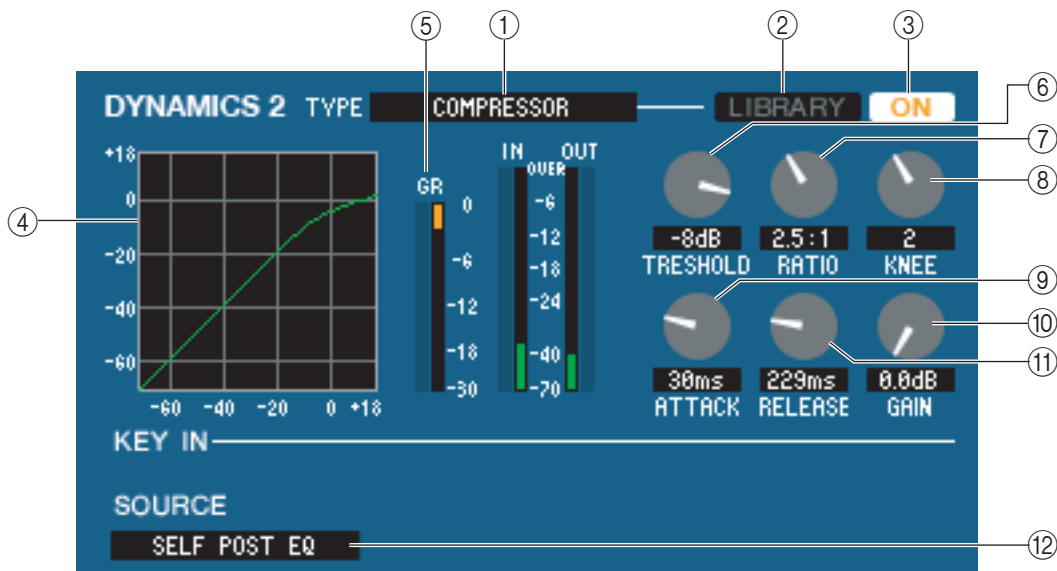
This button cue-monitors the currently selected key-in signal. This is not shown in the ADDITIONAL VIEW.

⑬ **KEY IN FILTER**

Select the type of filter applied to the selected key-in signal; HPF (high pass filter), BPF (band pass filter), or LPF (low pass filter). The ON/OFF button switches the filter on/off.

If you've selected BPF, use the two knobs to adjust the band pass frequency and Q. If you've selected HPF or LPF, use the knob to adjust the cutoff frequency.

**If COMPRESSOR is selected**



① **TYPE**

Indicates the type of the currently selected compressor.

② **LIBRARY**

This button accesses the dynamics library. Clicking this button will open the DYNAMICS page of the LIBRARY window.

③ **ON**

This button switches the compressor on/off.

④ **Response curve**

Indicates the response for the compressor of the currently selected channel.

⑤ **GR meter**

This meter indicates the amount of gain reduction produced by the compressor.

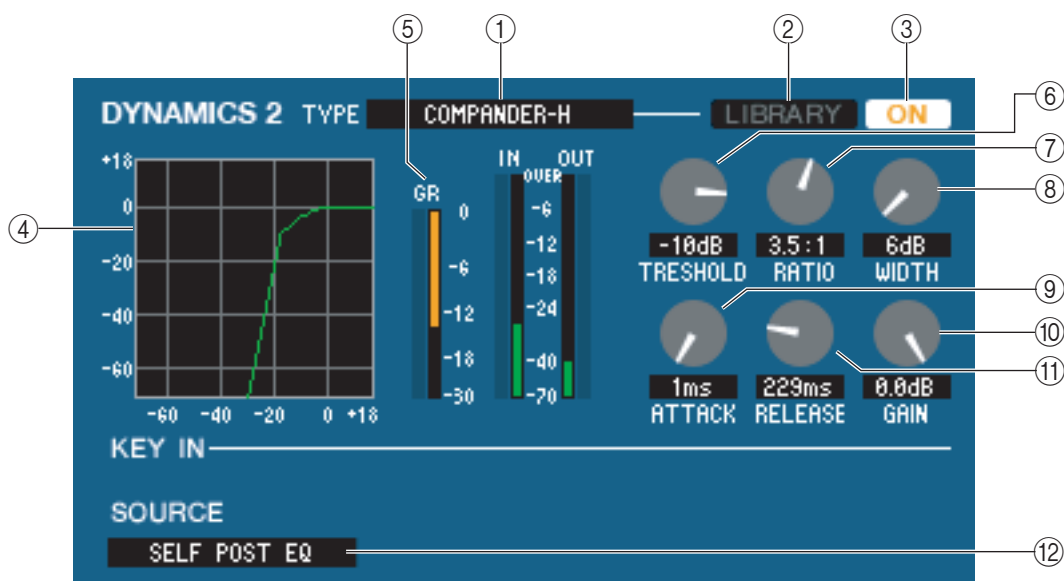
⑥ **THRESHOLD**

Specifies the threshold level at which the compressor will operate. The input signal will start being compressed when the key-in signal exceeds this level; compression will be removed when the signal falls below this level.



- ⑦ **RATIO**  
Specifies the ratio at which the input signal will be compressed when the key-in signal exceeds the threshold.
- ⑧ **KNEE**  
Specifies the sharpness at which the output level will change. You can select from HARD or 1–5.
- ⑨ **ATTACK**  
Specifies the time from when the key-in signal exceeds the threshold level until the signal starts being compressed.
- ⑩ **GAIN**  
Adjusts the gain of the signal after it has passed through the compressor.
- ⑪ **RELEASE**  
Specifies the time from when the key-in signal falls below the threshold level until compression is removed.
- ⑫ **KEY IN SOURCE**  
Click this to select the key-in signal that you want to use.  
The choices are the same as for GATE.

**If COMPANDER-H, COMPANDER-S is selected**



- ① **TYPE**  
Indicates the type of the currently selected compressor. You can click here to select the type.
- ② **LIBRARY**  
This button accesses the dynamics library. Clicking this button will open the DYNAMICS page of the LIBRARY window.
- ③ **ON**  
This button switches the compressor on/off.
- ④ **Response curve**  
Indicates the response for the compander of the currently selected channel.
- ⑤ **GR meter**  
This meter indicates the amount of gain reduction produced by the compressor.
- ⑥ **THRESHOLD**  
Specifies the threshold level at which the compressor will operate. The input signal will start being compressed when the key-in signal exceeds this level; compression will be removed when the signal falls below this level.
- ⑦ **RATIO**  
Specifies the ratio at which the input signal will be compressed when the key-in signal exceeds the threshold.

⑧ **WIDTH**

Specifies the width between the threshold level of the compressor (THRESHOLD) and the threshold level of the expander. The expander effect will apply to levels below THRESHOLD + WIDTH.

⑨ **ATTACK**

Specifies the time from when the key-in signal exceeds the threshold level until the signal starts being compressed.

⑩ **GAIN**

Adjusts the gain of the signal after it has passed through the compressor.

⑪ **RELEASE**

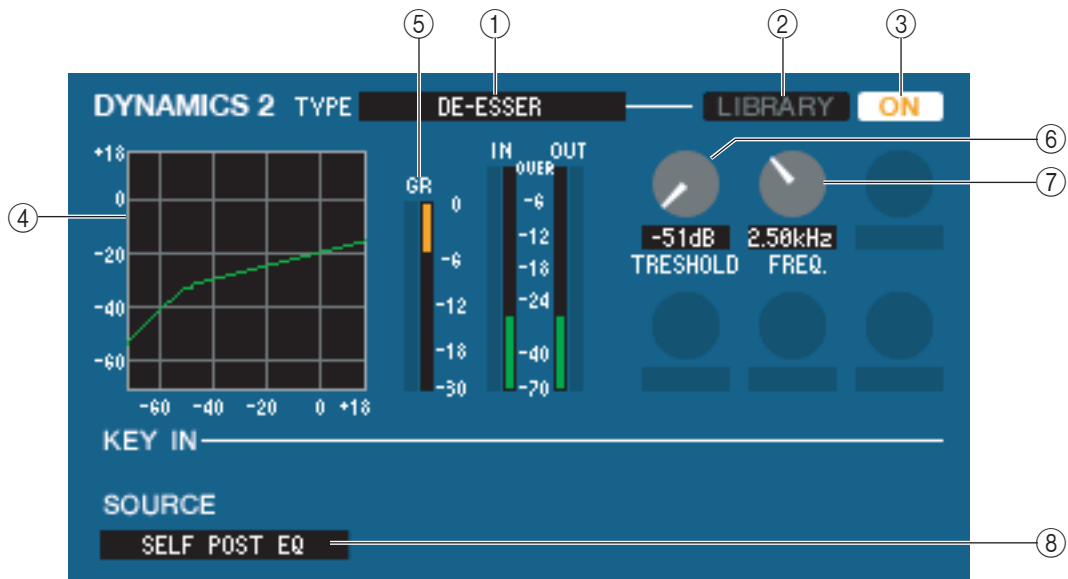
Specifies the time from when the key-in signal falls below the threshold level until compression is removed.

⑫ **KEY IN SOURCE**

Click this to select the key-in signal that you want to use.

The choices are the same as for GATE.

**If DE-ESSER is selected**



① **TYPE**

This indicates that De-Esser is the currently selected type.

② **LIBRARY**

This button accesses the dynamics library. Clicking this button will open the DYNAMICS page of the LIBRARY window.

③ **ON**

This button switches the de-esser on/off.

④ **Response curve**

Indicates the response for the de-esser of the currently selected channel.

⑤ **GR meter**

This meter indicates the amount of gain reduction produced by the de-esser.

⑥ **THRESHOLD**

Specifies the threshold level at which the de-esser will operate. The input signal will start being compressed when the key-in signal exceeds this level; compression will be removed when the signal falls below this level.

⑦ **FREQ. (Minimum frequency)**

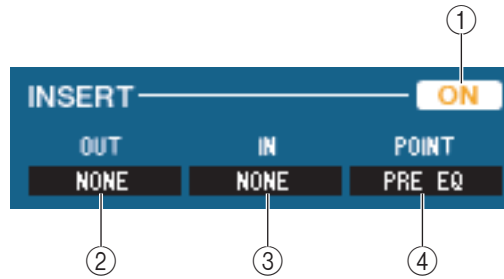
Specifies the minimum frequency at which the key-in signal will activate the de-esser.

⑧ **KEY IN SOURCE**

Click this to select the key-in signal that you want to use.

The choices are the same as for GATE.

## ❑ INSERT (except for ST IN channels)



### ① ON

Enables/disables insert-in/out.

### ② OUT (Insert out)

Click this to select the output port that will be assigned to insert-out, from the following choices.

NONE	No assignment
SLOT1-1, SLOT1-2...SLOT3-15, SLOT3-16	Output channels of an I/O card installed in slots 1–3
RACK1A, RACK1B...RACK8R(B)	L/R outputs of Rack 1–8

### ③ IN (Insert in)

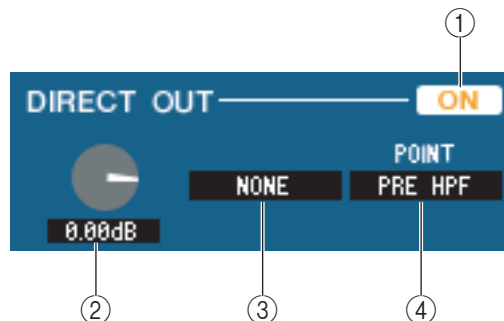
Click this to select the input port that will be assigned to insert-in, from the following choices.

NONE	No assignment
SLOT1-1, SLOT1-2...SLOT3-15, SLOT3-16	Input channels of an I/O card installed in slots 1–3
RACK1A, RACK1B...RACK8R(B)	L/R inputs of Rack 1–8

### ④ POINT (Insert point)

Selects the position at which insert-in/out will be patched. Choose from PRE EQ, PRE FADER, or POST ON.

## ❑ DIRECT OUT (except for ST IN channels)



### ① ON

Turns the direct output on/off.

### ② DIRECT OUT GAIN

Adjusts the gain of the direct output. The current value is shown in the numerical box below the knob. You can set this to the nominal value (0.0 dB) by holding down the <Ctrl> key and clicking the knob.

### ③ DIRECT OUT PORT

Click this to select one of the following output ports as the one used for direct out.

NONE	No assignment
OMNI1–OMNI16	OMNI jacks 1–16
SLOT1-1, SLOT1-2...SLOT3-16	Output channels of an I/O card installed in slots 1–3

### ④ DIRECT OUT POINT

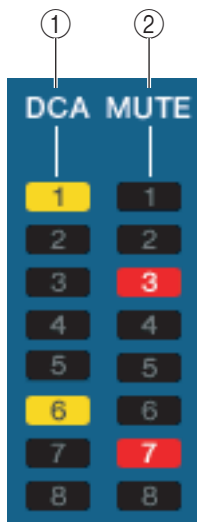
Selects the position at which direct out will be patched. Choose from PRE HPF, PRE EQ, PRE FADER, or POST ON.

## □ RECALL SAFE/MUTE SAFE

These enable/disable Recall Safe and Mute Safe for the channel.



## □ DCA GROUP/MUTE GROUP



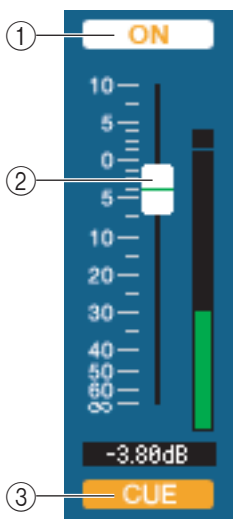
### ① DCA GROUP

Selects the DCA group (1–8) to which that channel belongs.

### ② MUTE GROUP

Selects the mute group (1–8) to which that channel belongs.

## □ Fader



### ① ON

Switches the input channel on/off. This is linked with the INPUT section CH [ON] keys on the M7CL's panel.

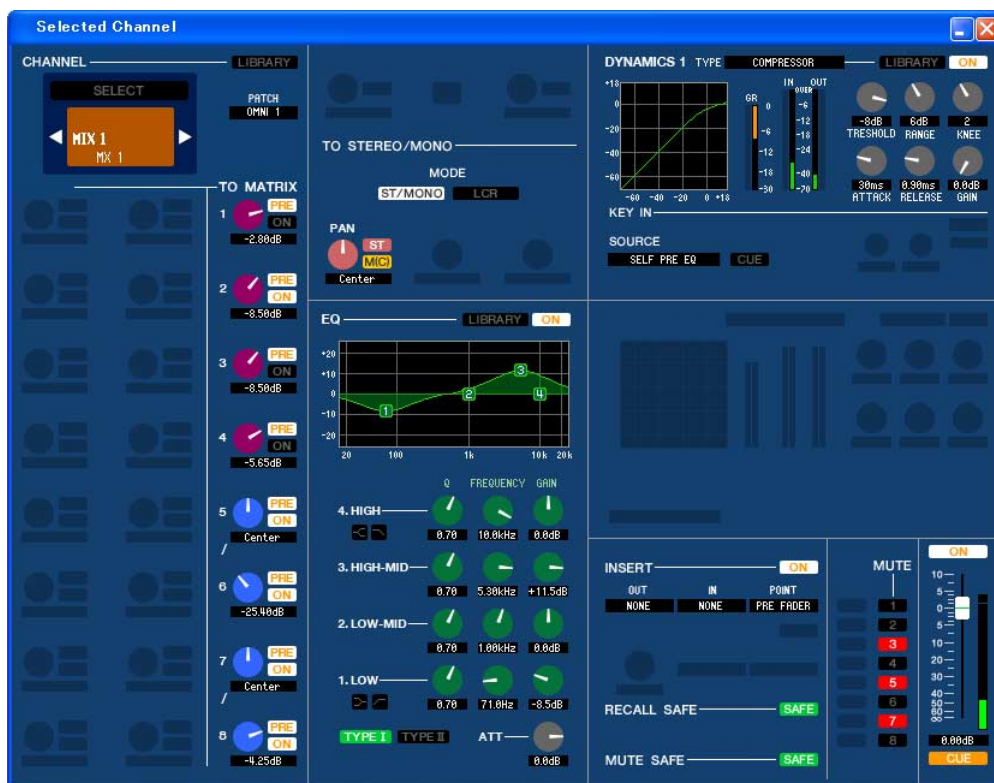
### ② Fader

Adjusts the input level of the input channel. This is linked with the INPUT section faders of the M7CL's panel. A meter indicating the signal level is shown at the right of the fader, and the current value is shown in the numerical box immediately below. You can set this to the minimum value ( $-\infty$  dB) by holding down the <Ctrl> key of your computer keyboard and clicking the fader knob, or set it to the nominal value (0.00 dB) by holding down the <Ctrl> key and <Shift> key and clicking the fader knob.

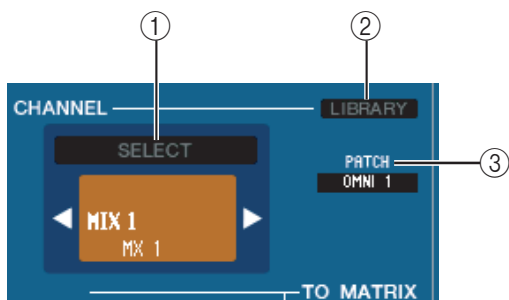
### ③ CUE

This button cue-monitors the signal of the input channel. This is linked with the INPUT section [CUE] keys on the M7CL's panel.

# If a MIX channel is selected



## CHANNEL SELECT (Channel selection)



### 1 SELECT (Channel selection)

Except for the fact that your editing applies to a MIX channel, this is the same as the channel selection for an input channel (➔ p.24).

### 2 LIBRARY

Accesses the Output Channel Library. Click this button to open the OUTPUT CH page of the Library window.

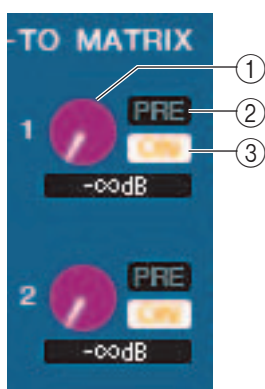
### 3 INPUT PATCH

Selects the input source assigned to the input channel (for the selectable input sources, ➔ p.16)

If multiple patches have been made, only the first port is shown.

If you change the patching in this window, the port that had been assigned until then will be cancelled, and only the newly selected port will be assigned.

## TO MATRIX



### 1 MATRIX send level

This adjusts the send level of the signal sent from the MIX channel to the MATRIX buses.

### 2 ON (MATRIX send on/off)

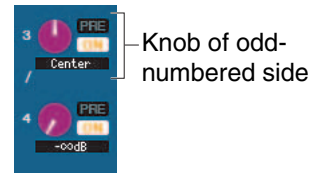
This is an on/off switch for the signal sent from the MIX channel to the MATRIX bus.

### 3 POINT (Send point)

Select either PRE or POST as the position from which the signal is sent from the MIX channel to the MATRIX bus. PRE POINT is selected if this is on, or POST FADER is selected if this is off. The PRE POINT setting can be made in the Mixer Setup screen.

**HINT**

- If you are using MATRIX buses in stereo, the knob for the odd-numbered bus will be PAN.
- The stereo/mono status can be specified in the Mixer Setup screen.



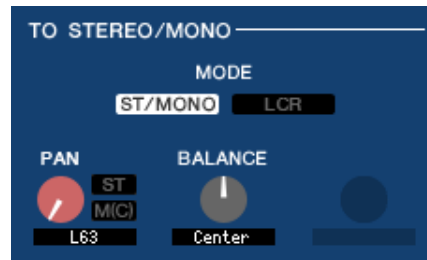
## TO STEREO/MONO

Here you can specify how the signal will be sent from the MIX channel to the STEREO bus / MONO bus.

### MODE

- **ST/MONO button**

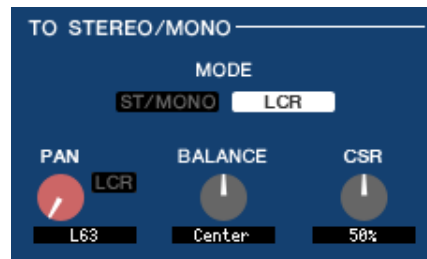
When this button is on, the signal will be sent to the STEREO bus and independently to the MONO bus.



<b>PAN</b>	Adjusts the panning of the signal sent from the MIX channel to the STEREO bus L/R channels. You can set this to the center position by holding down the <Ctrl> key of the computer keyboard and clicking the knob. This is linked with the [PAN] encoder in the SELECTED CHANNEL section of the M7CL panel. If the selected MIX bus is used as a stereo bus, the odd-numbered channel is fixed at L63 and the even-numbered channel fixed at R63.
<b>ST</b>	Switches the signal sent from the MIX channel to the STEREO bus on/off.
<b>MONO</b>	Switches the signal sent from the MIX channel to the MONO bus on/off.
<b>BALANCE</b>	This is shown only if the selected MIX bus is assigned as a stereo bus. It adjusts the left/right volume balance of the stereo bus. You can set this to the center position by holding down the <Ctrl> key of the computer keyboard and clicking the knob.

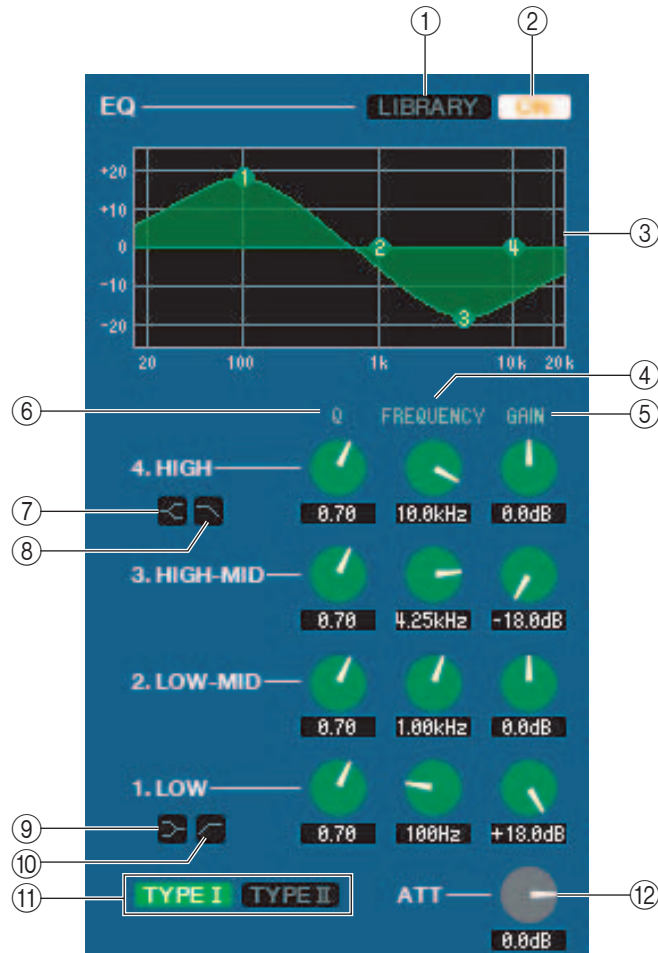
- **LCR button**

When this button is on, the signal will be sent to the L/C/R buses which work in conjunction with each other.



<b>PAN</b>	Adjusts the panning of the signal that is sent from the MIX channel to each of the L/C/R channels. You can set this to the center position by holding down the <Ctrl> key of the computer keyboard and clicking the knob. This is linked with the [PAN] encoder in the SELECTED CHANNEL section of the M7CL panel. If the selected MIX bus is used as a stereo bus, the odd-numbered channel is fixed at L63 and the even-numbered channel fixed at R63.
<b>BALANCE</b>	This is shown only if the selected MIX bus is assigned as a stereo bus. It adjusts the left/right volume balance of the stereo bus. You can set this to the center position by holding down the <Ctrl> key of the computer keyboard and clicking the knob.
<b>CSR (Center Side Ratio)</b>	Adjusts the proportion of the CENTER channel level relative to the STEREO bus L/R in a range of 0–100%.

## □ EQUALIZER



- ① **LIBRARY**  
Accesses the OUTPUT EQ page of the LIBRARY window.
- ② **ON**  
Switches the EQ on/off.
- ③ **EQ graph**  
Indicates the response for the EQ of the currently selected channel. To reset the EQ to flat response, hold down the <Ctrl> key of your computer keyboard and click the graph.
- ④ **Q**
- ⑤ **FREQUENCY**
- ⑥ **GAIN**  
These knobs adjust the Q, center frequency, and boost/cut amount for the four bands LOW, LO-MID, HI-MID, and HIGH.
- ⑦ **HIGH shelving**  
If this button is on, the HIGH EQ will be switched to a shelving type (the Q knob of the HIGH EQ will disappear).
- ⑧ **LPF (Low Pass Filter)**  
If this button is on, the HIGH EQ will function as a low pass filter. The Q knob of the HIGH EQ will disappear, and the GAIN knob will act as the low pass filter on/off switch.
- ⑨ **LOW shelving**  
If this button is on, the LOW EQ will be switched to a shelving type (the Q knob of the LOW EQ will disappear).
- ⑩ **HPF (High Pass Filter)**  
If this button is on, the LOW EQ will function as a high pass filter EQ. The Q knob of the LOW EQ will disappear, and the GAIN knob will act as the high pass filter on/off switch.
- ⑪ **TYPE I/TYPE II (EQ type)**  
Selects either TYPE I (the algorithm used by previous digital mixers) or TYPE II (a newly developed algorithm) as the EQ type.
- ⑫ **ATT (Attenuation)**  
Adjusts the amount of attenuation/gain.



## □ DYNAMICS1

Except for the fact that the available types are COMPRESSOR, EXPANDER, COMPAND H and COMPAND S, and that you can select more than one signal as the key-in signal, this is the same as the dynamics for input channels (➔ p.28).

## □ INSERT

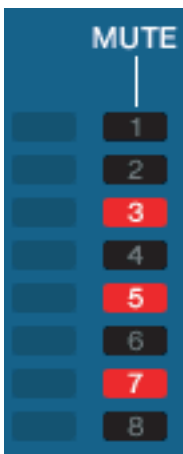
Except for the fact that the insert points that can be selected are different, this is the same as for the insert settings of an input channel (➔ p.32).

## □ RECALL SAFE/MUTE SAFE

These are the same as the Recall Safe and Mute Safe functions for input channels.

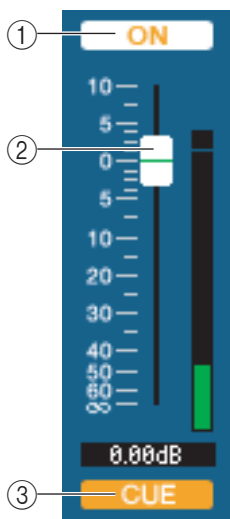


## □ MUTE GROUP



Selects the mute group (1–8) to which the MIX channel belongs.

## □ Pan/Fader



### ① ON

Switches the MIX channel on/off.

### ② Fader

Adjusts the output level of the MIX channel. A meter indicating the signal level is shown at the right of the fader, and the current value is shown in the numerical box immediately below. You can set this to the minimum value ( $-\infty$  dB) by holding down the <Ctrl> key of your computer keyboard and clicking the fader knob, or set it to the nominal value (0.00 dB) by holding down the <Ctrl> key and <Shift> key and clicking the fader knob.

### ③ CUE

This button cue-monitors the signal of the MIX channel.

# If a MATRIX channel is selected



## □ CHANNEL SELECT (Channel selection)

Except for the fact that your editing applies to a MATRIX channel, this is the same as the channel selection for a MIX channel (➔ p.34).

## □ FROM MIX, ST/MONO

### ① FROM MIX, ST/MONO send level

These adjust the send levels of the signals sent from the VARI type MIX buses or STEREO/MONO buses to the MATRIX bus. The current value is shown in the numerical box immediately below.

#### • PRE/POST

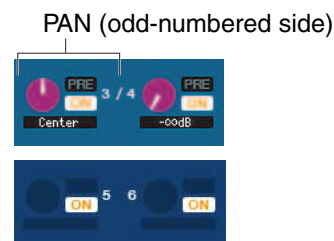
These select either PRE or POST as the position from which the signal is sent from the MIX buses or STEREO/MONO buses to the MATRIX bus. PRE POINT is selected if this is on, or POST FADER is selected if this is off.

### ② ON(FROM MIX, ST/MONO send on/off)

These are on/off switches for the signal sent from the MIX buses or STEREO/MONO buses to the MATRIX bus.

#### HINT

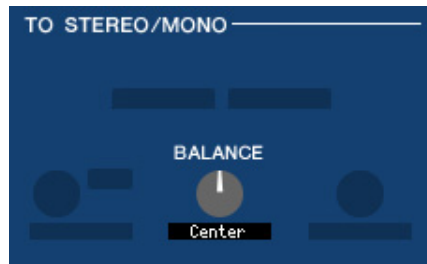
- If MIX buses and MATRIX buses are being used in stereo, the odd-numbered knob will be PAN.



- If the FIXED type is selected for the MIX bus, only the ON button is valid.

- The stereo/mono setting and the VARI type / FIXED type setting can be made in the Mixer Setup screen.

## □ BALANCE



This is shown only if the selected MATRIX bus is being used as stereo. It adjusts the left/right volume balance of the stereo signal. You can set this to the center value by holding down the <Ctrl> key of your computer keyboard and clicking this knob.

## □ EQUALIZER

This is the same as for the equalizer of a MIX channel (➔ p.36).

## □ DYNAMICS1

Except for the fact that the available types are COMPRESSOR, EXPANDER, COMPAND H and COMPAND S, and that you can select more than one signal as the key-in signal, this is the same as the dynamics for input channels (➔ p.28).

## □ INSERT

Except for the fact that the insert points that can be selected are different, this is the same as for the insert settings of an input channel (➔ p.32).

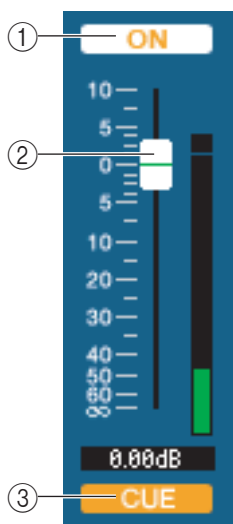
## □ RECALL SAFE/MUTE SAFE

These are the same as the RECALL SAFE/MUTE SAFE of a MIX channel (➔ p.37).

## □ MUTE GROUP

These are the same as the MUTE GROUP of a MIX channel (➔ p.37).

## □ Fader



### ① ON

This switches the MATRIX channel on/off.

### ② Fader

This adjusts the output level of the MATRIX channel. A meter indicating the signal level is shown at the right of the fader, and the current value is shown in the numerical box immediately below. You can set this to the minimum value ( $-\infty$  dB) by holding down the <Ctrl> key of your computer keyboard and clicking the fader knob, or set it to the nominal value (0.00 dB) by holding down the <Ctrl> key and <Shift> key and clicking the fader knob.

### ③ CUE

This button cue-monitors the signal of the MATRIX channel.

# If a STEREO/MONO channel is selected

## ● STEREO channel window



## ● MONO channel window



## □ CHANNEL SELECT (Channel selection)

Except for the fact that your editing applies to a STEREO/MONO channel, this is the same as the channel selection for a MIX channel (➔ p.34).

## □ TO MATRIX

These are the same as the TO MATRIX of a MIX channel (➔ p.34).

## ❑ BALANCE (except for MONO channel)



This adjusts the left/right volume balance in the STEREO bus. You can set this to the center value by holding down the <Ctrl> key of your computer keyboard and clicking this knob.

## ❑ EQUALIZER

This is the same as the equalizer settings of a MIX channel (➔ p.36).

## ❑ DYNAMICS1

Except for the fact that the available types are COMPRESSOR, EXPANDER, COMPAND H and COMPAND S, and that you can select more than one signal as the key-in signal, this is the same as the dynamics for input channels (➔ p.28).

## ❑ INSERT

Except for the fact that the insert points that can be selected are different, this is the same as for the insert settings of an input channel (➔ p.32).

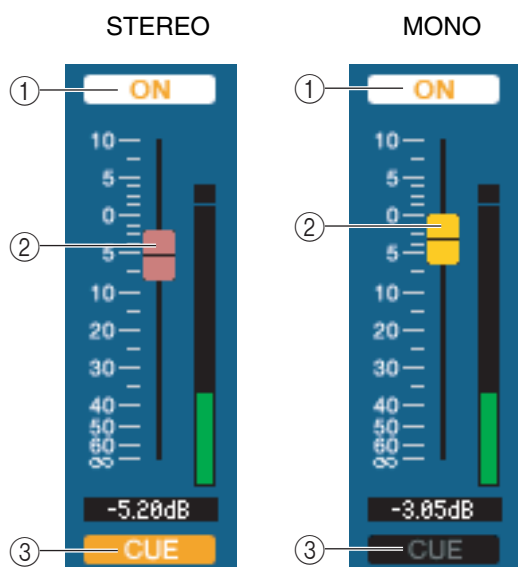
## ❑ RECALL SAFE/MUTE SAFE

These are the same as the RECALL SAFE/MUTE SAFE of a MIX channel (➔ p.37).

## ❑ MUTE GROUP

These are the same as the MUTE GROUP of a MIX channel (➔ p.37).

## ❑ Fader



### ① ON

This switches the STEREO/MONO channel on/off. This is linked with the STEREO/MONO MASTER section [ON] keys on the M7CL's panel.

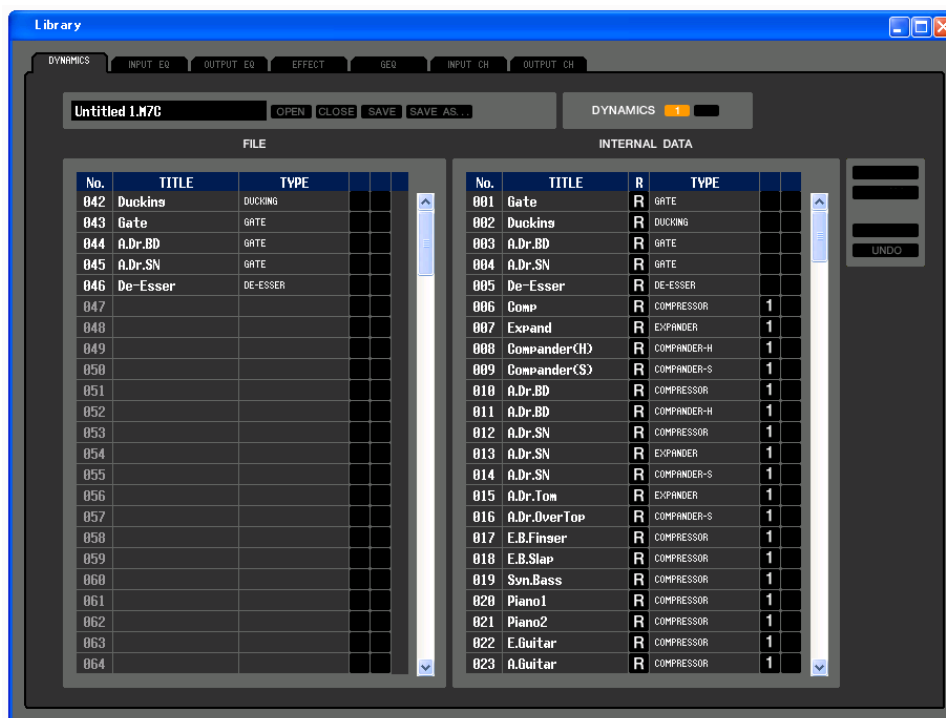
### ② Fader

Adjusts the output level of the STEREO/MONO channel. This is linked with the STEREO/MONO MASTER section faders of the M7CL's panel. A meter indicating the signal level is shown at the right of the fader, and the current value is shown in the numerical box immediately below.

### ③ CUE

This button cue-monitors the signal of the STEREO/MONO channel. This is linked with the STEREO/MONO MASTER section [CUE] keys on the M7CL's panel.

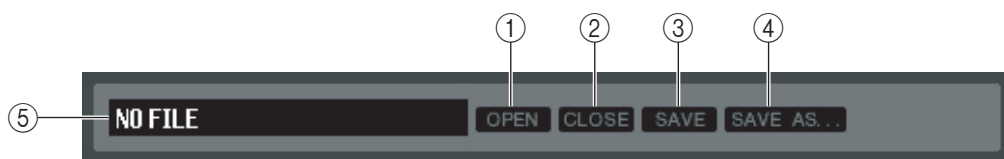
# Library window



Here you can edit the M7CL's various libraries. You can also load library files that were saved on a drive of your computer, edit the order or title of library items, recall the desired library data, or copy desired library data to a library within the M7CL.

This window is divided into DYNAMICS, INPUT EQ, OUTPUT EQ, EFFECT, GEQ, INPUT CH, and OUTPUT CH pages; to switch pages, click the tabs located at the top of the window.

To display this window, choose [LIBRARY] from the [Windows] menu, and select either "DYNAMICS," "INPUT EQ," "OUTPUT EQ," "EFFECT," "GEQ," "INPUT CH," or "OUTPUT CH."



## ① OPEN (Open a file)

Opens a library file located on a drive of your computer. Use this when you want to edit library data that you've saved on a USB storage device.

## ② CLOSE (Close a file)

Closes the currently-open library file.

## ③ SAVE

Saves the currently-open library file on a drive of your computer. Use this to re-save an edited library on a USB storage device, or to create a backup on the hard disk of your computer.

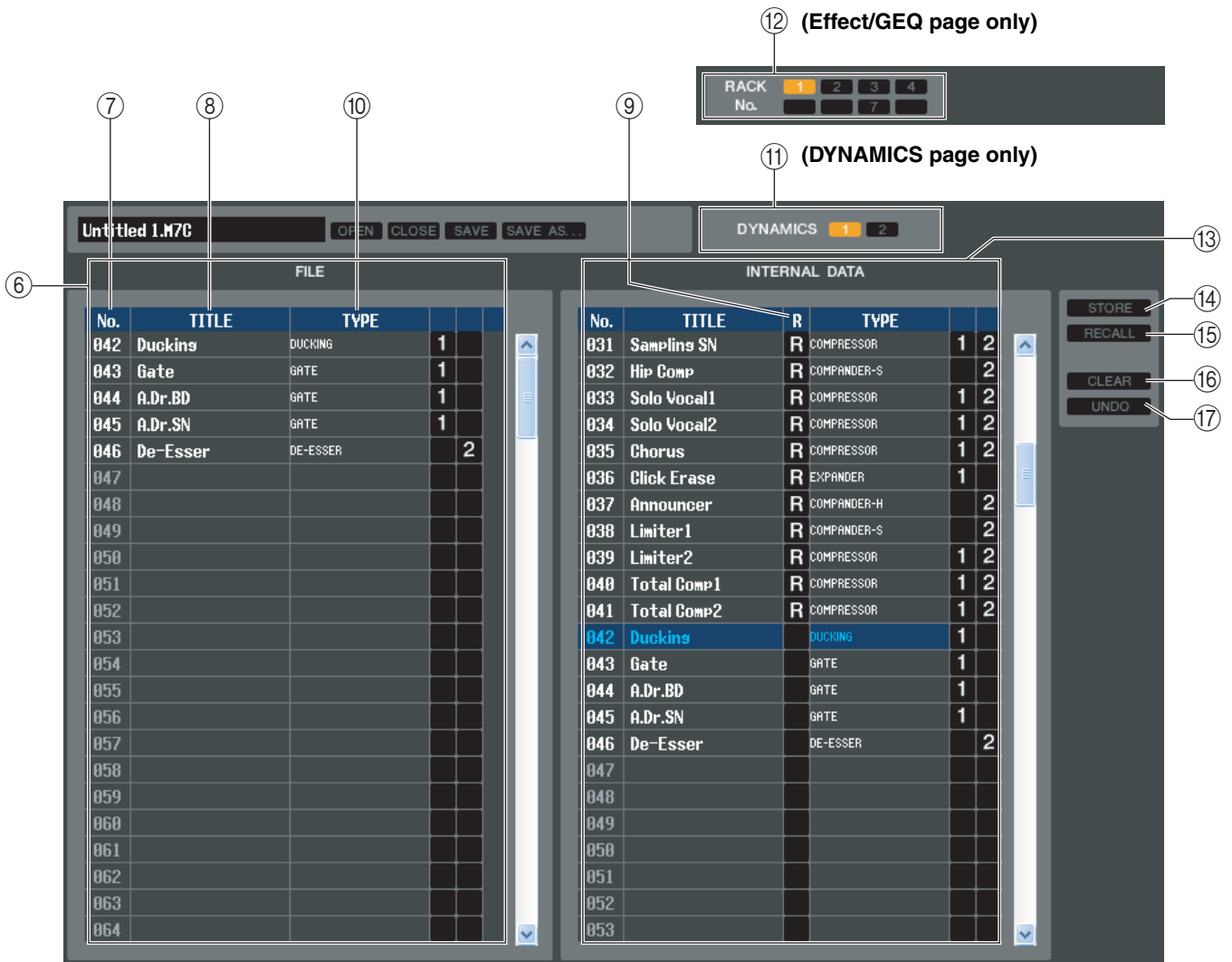
## ④ SAVE AS (Save under a different name)

Saves the currently-open library file under a different name on a drive of your computer.

## ⑤ File name

Indicates the file name of the currently-open library.





## ⑥ FILE

This list shows the contents of the data in the library file you opened using the OPEN button (①). The list includes the following items.

## ⑦ No. (Number)

This column indicates the number of each item in the library.

## ⑧ TITLE

This column indicates the title assigned to each library item. You can also double-click this area and edit the title.

## ⑨ READ ONLY

Read-only data is indicated by an “R” in this column. It cannot be overwritten, nor can its title be edited.

## ⑩ TYPE

This column indicates the effect type.

In the case of dynamics, there is also an indication of the dynamics processor(s) of this channel into which each library item can be recalled. Only library items with an indication of “1” can be recalled to DYNAMICS 1, and only library items with an indication of “2” can be recalled to DYNAMICS 2. Library items with neither of these indications cannot be recalled to this channel.

## ⑪ DYNAMICS (DYNAMICS page only)

Select which of the two dynamics processors will be subject to the Store or Recall operation.

## ⑫ RACK No. (Rack selection) (Effect/GEQ page only)

Select which rack will be subject to the Store or Recall operation.

**NOTE** HQ Pitch and Freeze cannot be recalled to an effect module mounted in Rack 6 or Rack 8.

## ⑬ INTERNAL DATA

This area shows the M7CL’s scene memory contents. The items displayed are the same as in the FILE list (⑥).

As desired, you can copy single or multiple scenes between the FILE list and the INTERNAL DATA list, and copy or move them to a different location within a list.

To do this, use the following methods to select the scene(s) that you want to copy or move.

- **To select a single scene**

Click the line containing the desired scene.

040	Total Comp1	R	COMPRESSOR
041	Total Comp2	R	COMPRESSOR
042	Gate		GATE
043	Duckings		DUCKING
044	A.Dr.BD		GATE
045	A.Dr.SN		GATE
046	De-Esser		DE-ESSER

- **To select multiple consecutive scenes**

Click the first scene to select it; then hold down the <Shift> key and click the last scene.

040	Total Comp1	R	COMPRESSOR
041	Total Comp2	R	COMPRESSOR
042	Gate		GATE
043	Duckings		DUCKING
044	A.Dr.BD		GATE
045	A.Dr.SN		GATE
046	De-Esser		DE-ESSER

- **To select multiple non-consecutive scenes**

Click the first scene; then hold down the <Ctrl> key and click each of the remaining scenes.

040	Total Comp1	R	COMPRESSOR
041	Total Comp2	R	COMPRESSOR
042	Gate		GATE
043	Duckings		DUCKING
044	A.Dr.BD		GATE
045	A.Dr.SN		GATE
046	De-Esser		DE-ESSER

When you have selected the scene(s) that you want to move or copy, drag them to the desired location in the other list (if you're copying between lists) or in the same list (if you're copying/moving within the same list).

- **To copy scenes (overwriting the destination)**

Drag the copy-source scene(s) to the desired line in the other list or to another line in the same list. At this time, a ► symbol will appear at the right of the scene number.

When you drop the scene in this state, a dialog box will appear, asking you to confirm the Save operation. If you click the OK button, the copy-source scene(s) will be overwritten onto the copy-destination scenes, and the copy-source scene(s) will remain unchanged. (If the copy-source selection contains multiple scenes, the data will be overwritten onto consecutive scenes starting at that scene.)

040	Total Comp1	R	COMPRESSOR
041	Total Comp2	R	COMPRESSOR
042	Gate		GATE
043	Duckings		DUCKING
044	A.Dr.BD		GATE
045	A.Dr.SN		GATE
046	De-Esser		DE-ESSER

- **To move scenes**

Within the same list, you can move the selected scene(s) to another location to rearrange the order of the scenes in the list. To do this, drag the selected scene(s) to a location between two other lines in the same list. At this time, a >— symbol will appear between the lines.

When you release the mouse button in this state, the selected scene(s) will move to that location, and the scene numbers will also change accordingly. (If the move-source selection contains multiple scenes, those scenes will be inserted consecutively at the location you specify.)

040	Total Comp1	R	COMPRESSOR
041	Total Comp2	R	COMPRESSOR
042	Gate		GATE
043	Duckings		DUCKING
044	A.Dr.BD		GATE
045	A.Dr.SN		GATE
046	De-Esser		DE-ESSER

**NOTE** You cannot copy the InitialData of the GEQ library.

14 **STORE**

Stores the current settings to the data item that is selected in the list.

15 **RECALL**

Recalls the data item that is selected in the list.

16 **CLEAR**

Clears the data item(s) selected in the list. (The title of the cleared item(s) will be reset to [No Data!].)

17 **UNDO**

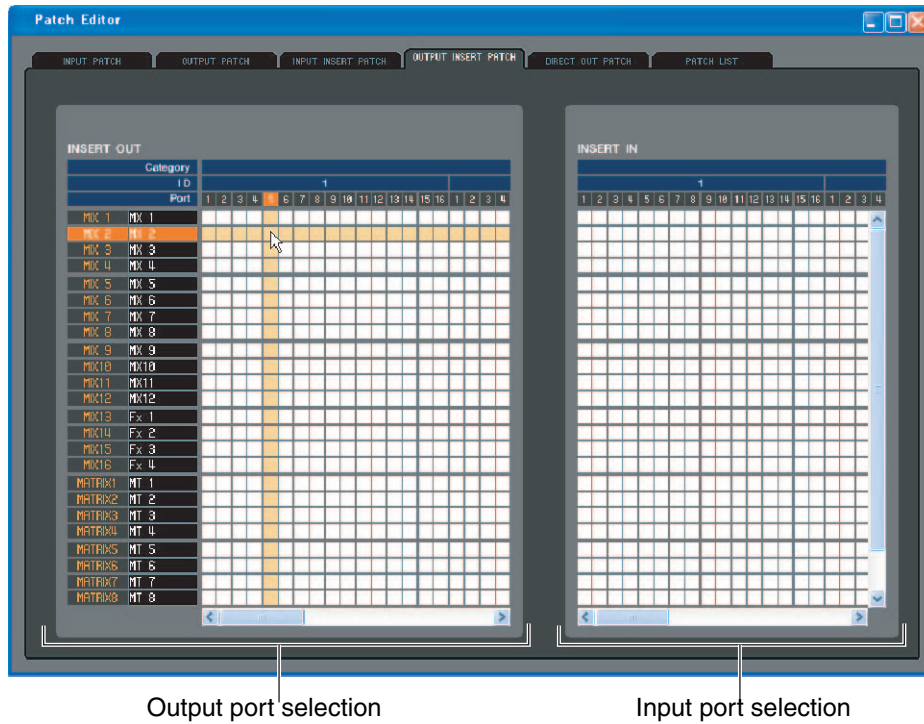
Cancels the last-performed library recall, store, copy, or move operation.

You can click this repeatedly to repeat Undo and Redo.



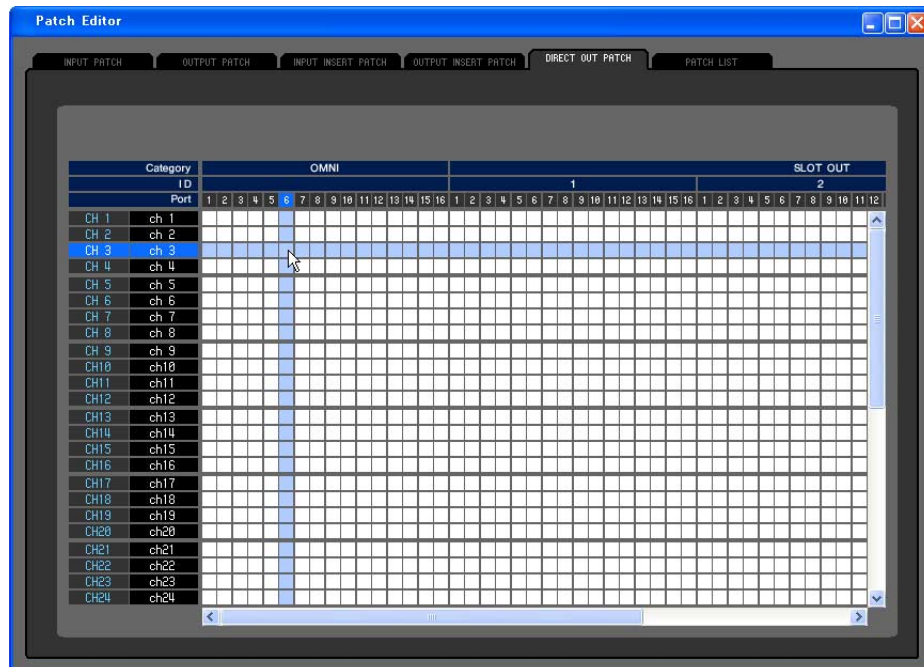


# OUTPUT INSERT PATCH page



Here you can assign input/output ports to the insert-in/out of each output channel. Select the output port in the left side of the screen, and the input port in the right side of the screen.

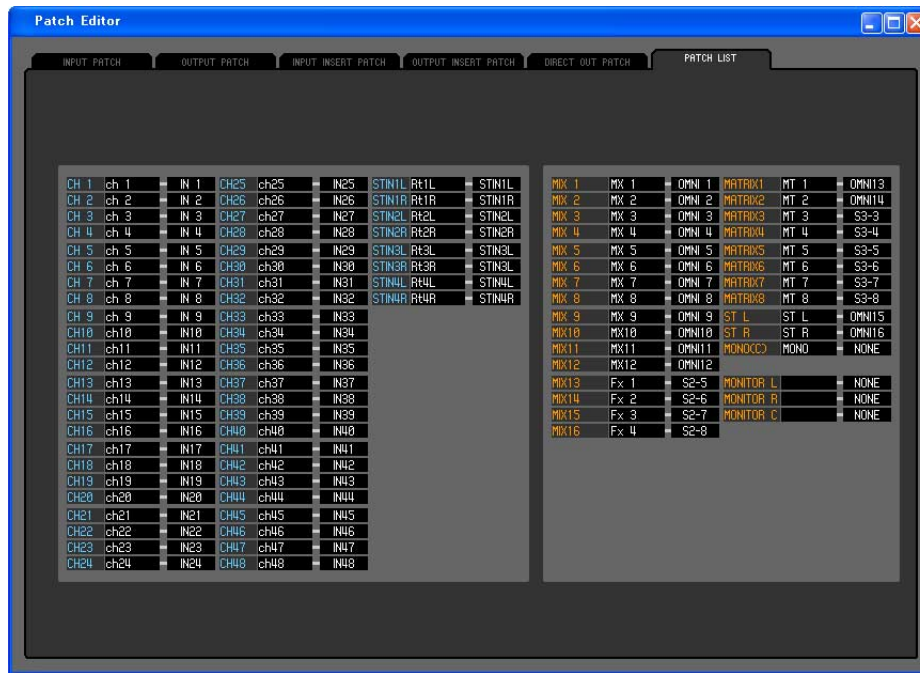
# DIRECT OUTPUT PATCH page



Here you can select the output port that will directly output each input channel.



# PATCH LIST page



Here you can view and edit the input patch and output patch settings.

CH 1	ch 1	IN 1	CH25	ch25	IN25	STIN1L	Rt1L	STIN1L	MIX 1	MX 1	OMNI 1	MATRIX1	MT 1	OMNI13
CH 2	ch 2	IN 2	CH26	ch26	IN26	STIN1R	Rt1R	STIN1R	MIX 2	MX 2	OMNI 2	MATRIX2	MT 2	OMNI14
CH 3	ch 3	IN 3	CH27	ch27	IN27	STIN2L	Rt2L	STIN2L	MIX 3	MX 3	OMNI 3	MATRIX3	MT 3	S3-3
CH 4	ch 4	IN 4	CH28	ch28	IN28	STIN2R	Rt2R	STIN2R	MIX 4	MX 4	OMNI 4	MATRIX4	MT 4	S3-4

① **Input channel number**

② **Input channel name**

This is the number and name of the input channel. You can click the channel name box to edit the name in this page.

③ **Input port**

This shows the input port assigned to the input channel. You can click this box and choose the input port from the popup menu that appears.

④ **Output channel number**

⑤ **Output channel name**

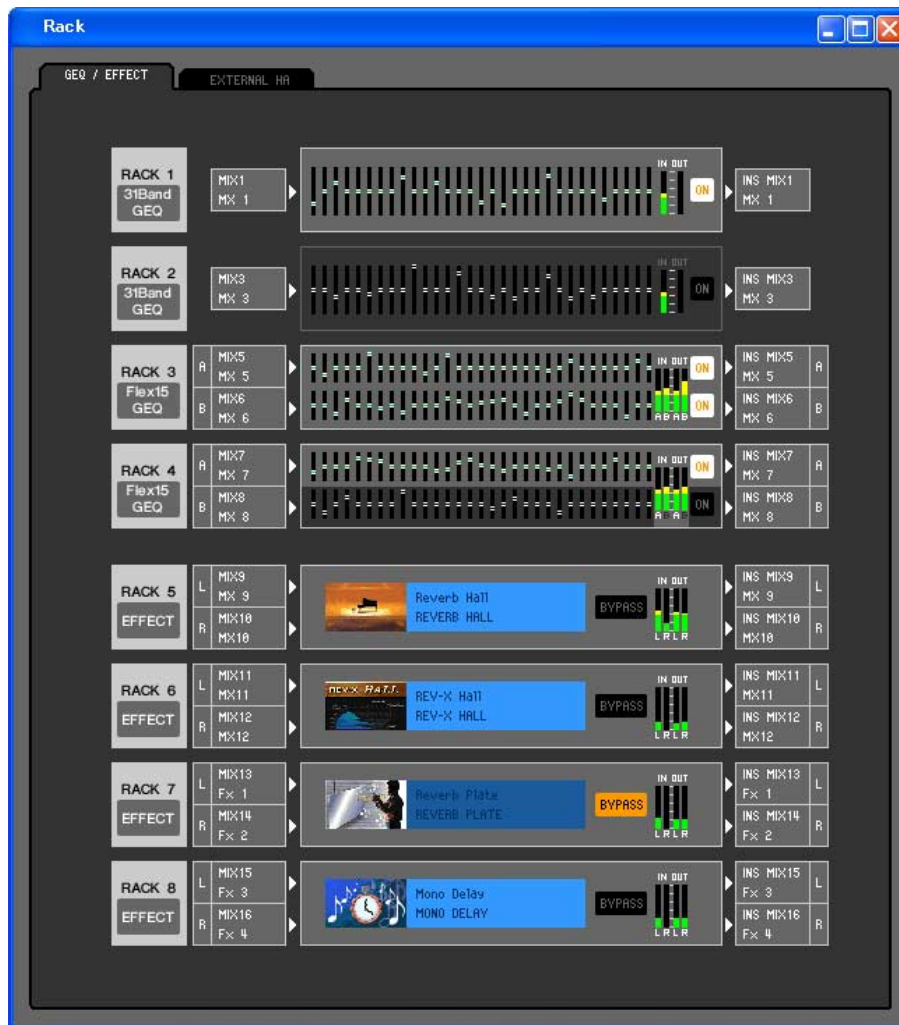
This is the number and name of the output channel. You can click the channel name box to edit the name in this page.

⑥ **Output port**

This shows the output port assigned to the output channel. You can click this box and choose the output port from the popup menu that appears.



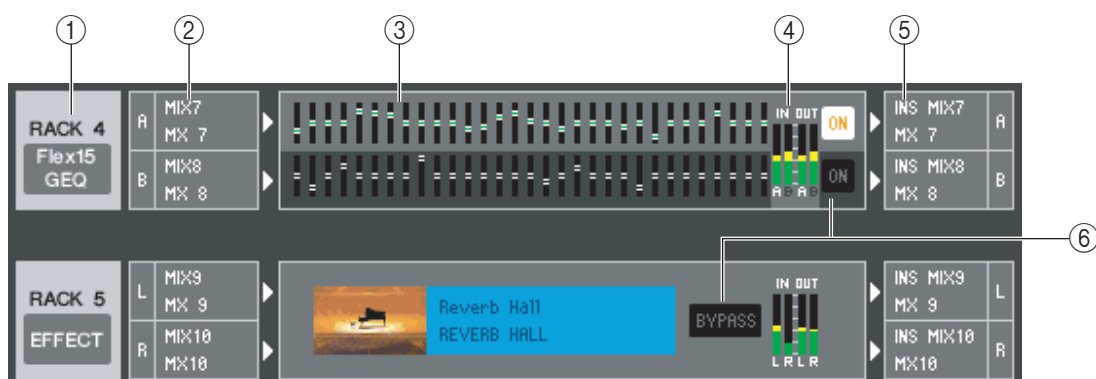
# Rack window



Here you can make settings for GEQ, effects, and external head amps.

This window is divided into GEQ/EFFECT and EXTERNAL HA pages; to switch pages, click the tabs located at the top of the window.

## GEQ/EFFECT page



## ① Mount

Select a GEQ module or effect module for mounting in the rack, from the following choices.

BLANK	No assignment
31 Band GEQ	31-band 1-in/1-out graphic equalizer
Flex15GEQ	2-in/2-out graphic equalizer that allows any fifteen of the 31 bands to be controlled
EFFECT	Internal effect (only for RACK 5–8)

## ② Input patch

Select the input port(s) that will be assigned to the rack, from the following choices.

NONE	No assignment
MIX 1–16	MIX channel 1–16
MATRIX1–8	MATRIX channel 1–8
ST L, ST R, MONO(C)	STEREO channel L/R, MONO channel
INS CH 1–48(*)	INPUT CH 1–48(*) insert in
INS MIX 1–16	MIX channel 1–16 insert in
INS MATRIX1–8	MATRIX channel 1–8 insert in
INS ST L, INS ST R, INS MONO(C)	Insert-in of STEREO channel L/R or the MONO channel

(\*) INPUT CH 33-48 can be viewed only if 48 is selected in the Input Channels field of the Mixer Setup window when editing offline, or when editing online with the M7CL-48.

This is not shown if nothing is mounted in the rack.

## ③ Module graphic

This area shows a graphic of the GEQ module or effect module that is currently assigned to the rack, and the parameters of that module. You cannot edit the parameters in this screen.

Double-click this to open the module editor for that rack unit.

By holding down the <Ctrl> key of your computer keyboard and double-clicking this, you can open multiple rack module editors. For these additional editors, the rack select buttons are not linked with the RACK popup window of the M7CL itself.

## ④ Input meter/Output meter

These indicate the level of the signals being input and output from the rack.

## ⑤ Output patch

Select the output port(s) that will be assigned to the rack, from the following choices.

NONE	No assignment
CH 1–48(*)	INPUT CH 1–48(*)
STIN1L-STIN4R	ST IN channel 1–4 (L/R)
INS CH 1–48(*)	INPUT CH 1–48(*) insert out
INS MIX 1–16	MIX channel 1–16 insert out
INS MTRX1–INS MTRX8	MATRIX channel 1–8 insert out
INS ST L, INS ST R, INS MONO(C)	Insert-out of STEREO channel L/R or the MONO channel

(\*) INPUT CH 33-48 can be viewed only if 48 is selected in the Input Channels field of the Mixer Setup window when editing offline, or when editing online with the M7CL-48.

## ⑥ ON, BYPASS

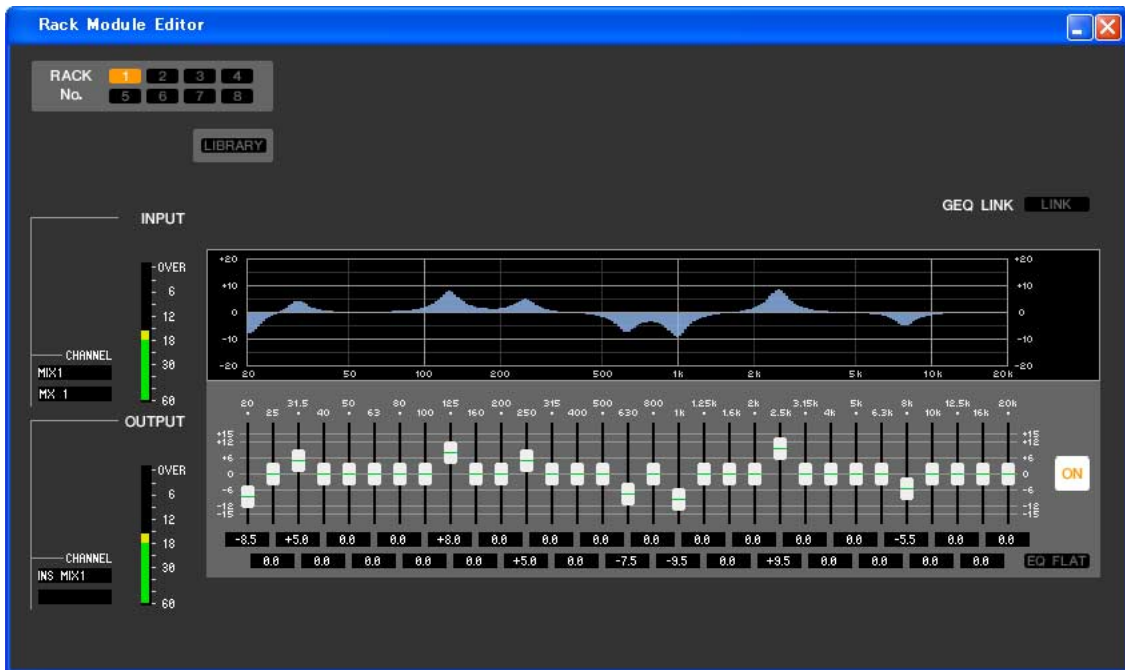
This switches the GEQ module or effect module between active and bypassed states.

A GEQ module is active when the ON button is lit.

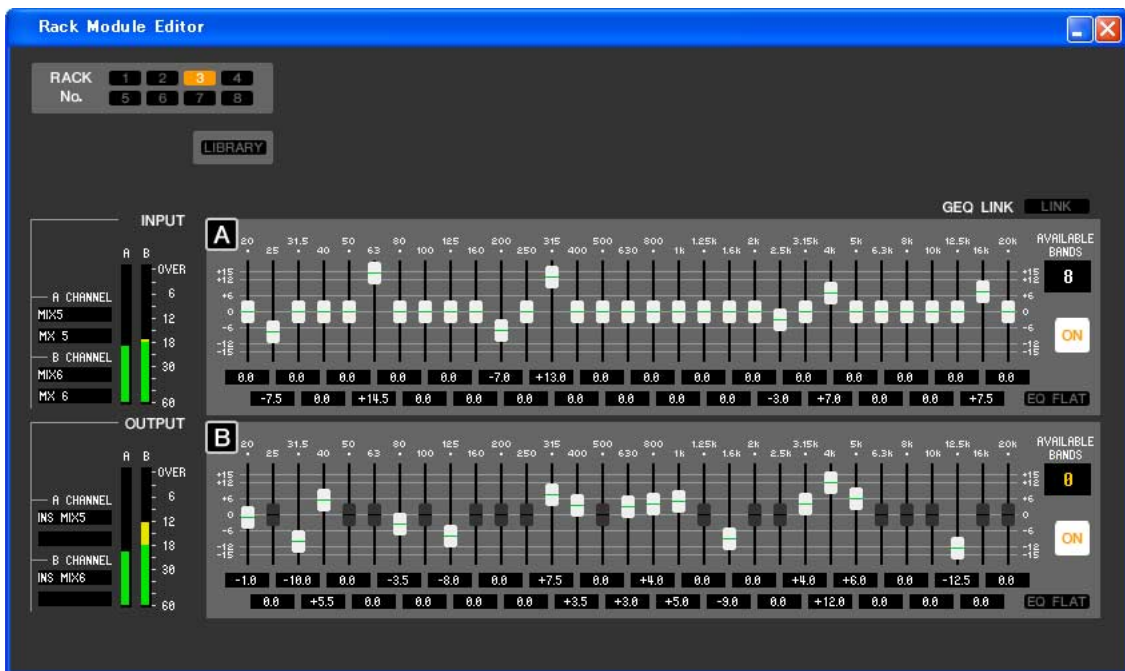
An effect module is active when the BYPASS button is dark.

# Rack module editor — GEQ window

## ● 31 Band GEQ



## ● Flex15GEQ



In this window you can select the insertion destination of GEQ, and edit the parameters.

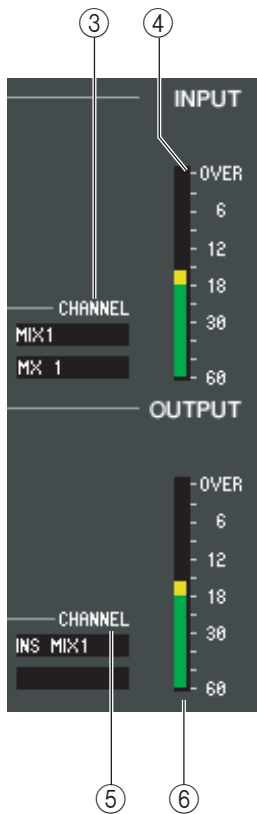


### ① Rack No. (Rack selection)

Select the rack module that you want to control.

### ② LIBRARY

This button accesses the GEQ library. Clicking this button will open the GEQ page of the LIBRARY window.



### ③ Input patch

Click the CHANNEL field, and choose one of the following as the signal route that will be patched to the input channel(s) of the currently selected GEQ module.

NONE	No assignment
MIX 1–16	MIX channel 1–16
MATRIX1–8	MATRIX channel 1–8
ST L, ST R, MONO(C)	STEREO channel L/R, MONO channel
INS CH 1–48(*)	INPUT CH 1–48(*) insert in
INS MIX 1–16	MIX channel 1–16 insert in
INS MATRIX1–8	MATRIX channel 1–8 insert in
INS ST L, INS ST R, INS MONO(C)	Insert-in of STEREO channel L/R or the MONO channel

(\*) INPUT CH 33-48 can be viewed only if 48 is selected in the Input Channels field of the Mixer Setup window when editing offline, or when editing online with the M7CL-48.

The channel name is shown in the boxes immediately below.

### ④ Input meter

This indicates the level of the signal that is being input to the currently selected GEQ module.

### ⑤ Output patch

Click the CHANNEL field, and choose one of the following as the signal route that will be patched to the output channel(s) of the currently selected GEQ module.

NONE	No assignment
CH 1–48(*)	INPUT CH 1–48(*)
STIN1L-STIN4R	ST IN channel 1–4 (L/R)
INS CH 1–48(*)	INPUT CH 1–48(*) insert out
INS MIX 1–16	MIX channel 1–16 insert out
MATRIX INSERT1–8	MATRIX channel 1–8 insert out
INS ST L, INS ST R, INS MONO(C)	Insert-out of STEREO channel L/R or the MONO channel

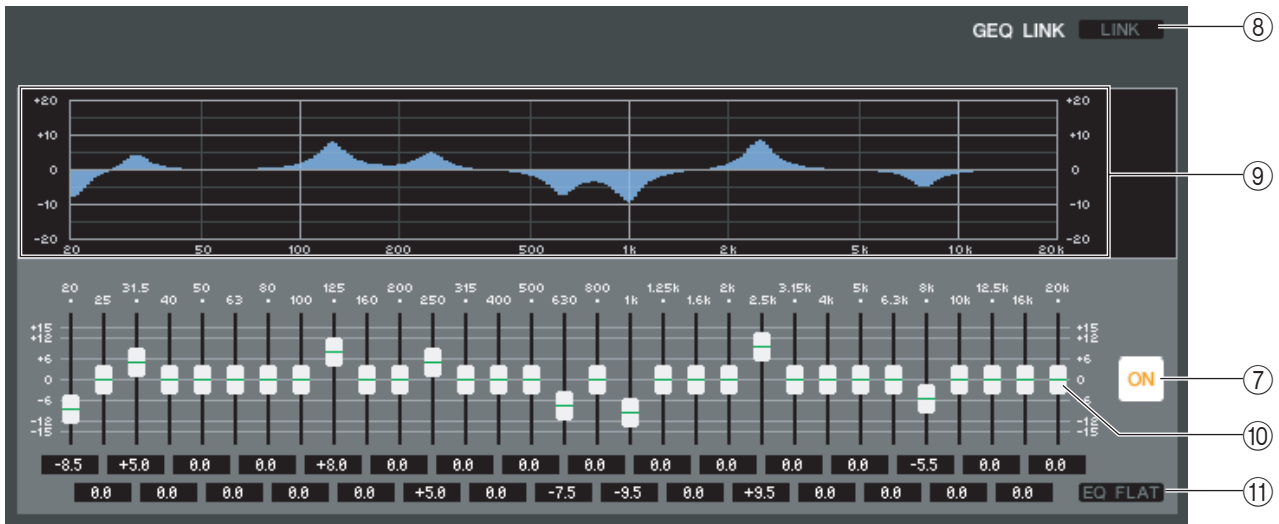
(\*) INPUT CH 33-48 can be viewed only if 48 is selected in the Input Channels field of the Mixer Setup window when editing offline, or when editing online with the M7CL-48.

The channel name is shown in the boxes immediately below.

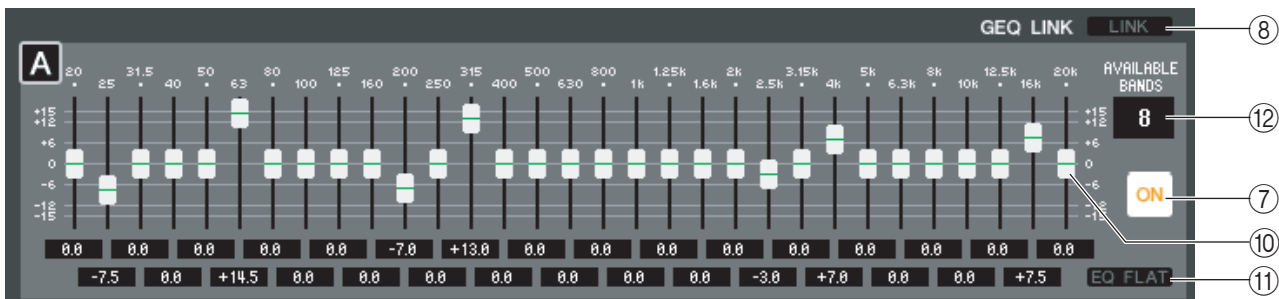
### ⑥ Output meter

This indicates the level of the signal that is being output to the currently selected GEQ module.

## ● 31 Band GEQ



## ● Flex15GEQ



### ⑦ ON (GEQ on/off)

Switches the currently selected GEQ module on/off.

### ⑧ LINK

This button links the settings of two adjacent odd-numbered/even-numbered 31-band GEQ modules, or the group A and group B settings of a Flex 15 GEQ. When you click this button, a window will ask you for confirmation. Click the buttons for the modules you want to use as the parameter copy-source and copy-destination. If you click the RESET BOTH button, the parameters of both modules will be reset to the default state.

### ⑨ GEQ graph

This graph shows the response of the currently selected GEQ module.

### ⑩ GEQ faders

These faders cut/boost the frequency bands of the GEQ module. The value of each fader is shown in the numerical box below it. Hold down the <Ctrl> key and click to set the value to 0.00 dB.

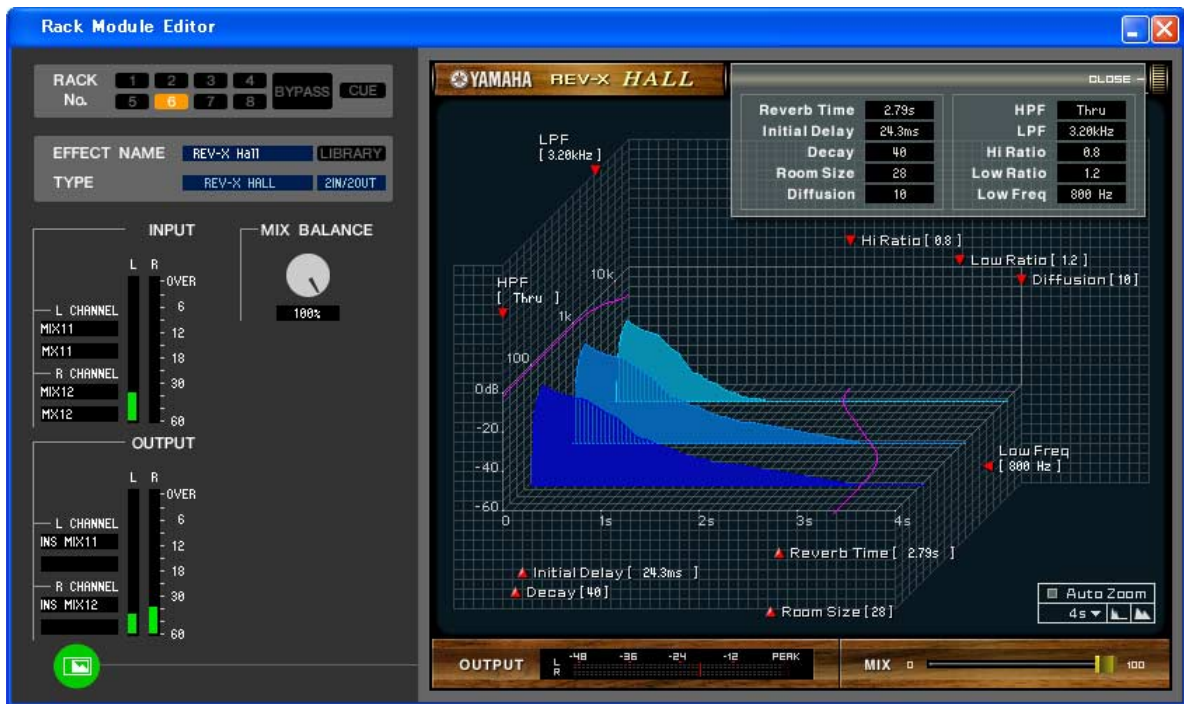
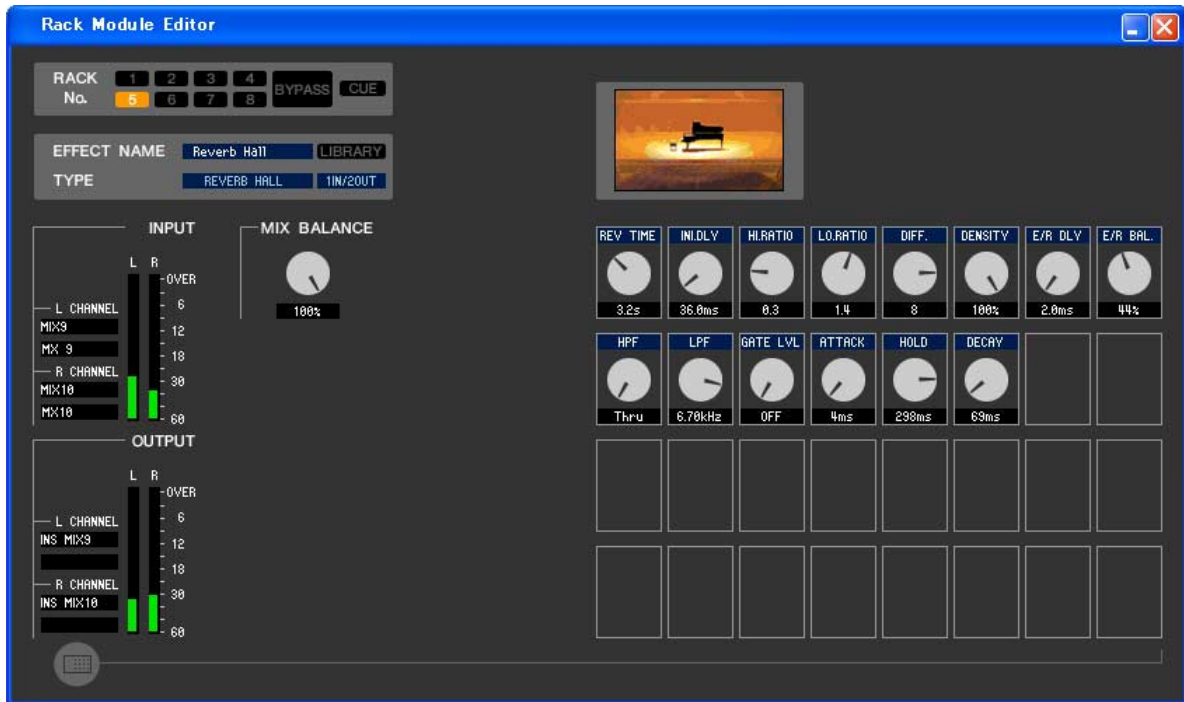
### ⑪ EQ FLAT

This button resets all GEQ faders to the 0 dB position.

### ⑫ AVAILABLE BANDS (number of operable bands) (Flex 15 GEQ only)

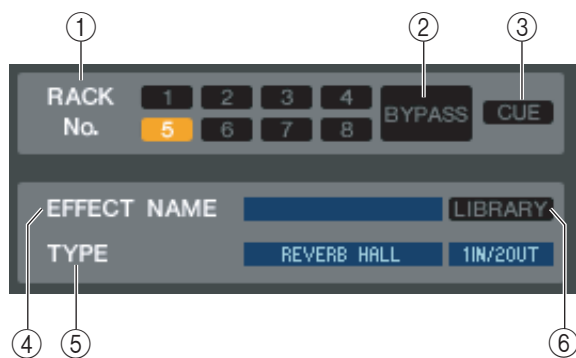
For a Flex 15 GEQ, you can operate any fifteen of the thirty-one bands. This numerical display box shows the remaining number of bands that can be operated. If you have operated fifteen bands, this number will be zero, and you won't be able to operate any additional bands. If you want to operate another band in this state, you'll need to return a previously-operated band back to the 0 dB position.

# Rack module editor — Effect window



Here you can select the effect type for an internal effect, edit the parameters, and specify the input/output patching.





### ① Rack No. (Rack selection)

Select the rack module that you want to control.

### ② BYPASS

This button temporarily bypasses the effect.

### ③ CUE

This button cue-monitors the output of the currently selected effect.

### ④ EFFECT NAME

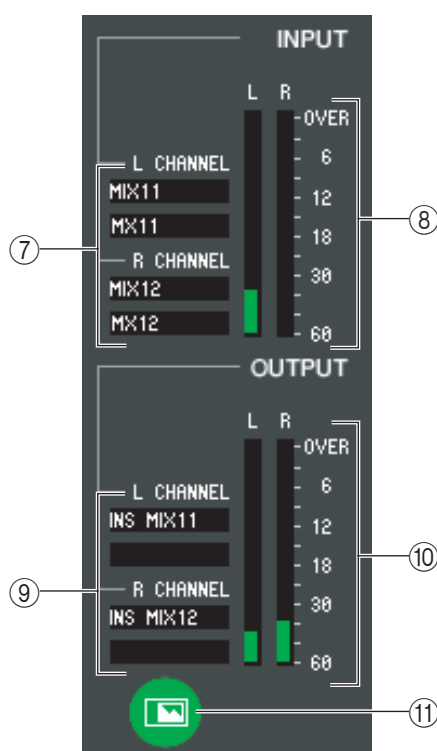
Indicates the title of the currently selected effect.

### ⑤ EFFECT TYPE

Indicates the currently selected effect type. You can also switch the effect type from this window. To do so, click the text box, and select the desired effect type from the popup menu that appears.

### ⑥ LIBRARY

This button accesses the effect library. Clicking this button will open the EFFECT page of the LIBRARY window.



### ⑦ Input patch

Click the L CHANNEL or R CHANNEL area, and choose one of the following as the signal route that will be patched to the L/R input channels of the internal effect.

NONE	No assignment
MIX 1–16	MIX channel 1–16
MATRIX1–8	MATRIX channel 1–8
ST L, ST R, MONO(C)	STEREO channel L/R, MONO channel
INS CH 1–48(*)	INPUT CH 1–48(*) insert in
INS MIX 1–16	MIX channel 1–16 insert in
INS MATRIX1–8	MATRIX channel 1–8 insert in
INS ST L, INS ST R, INS MONO(C)	Insert-in of STEREO channel L/R or the MONO channel

(\*) INPUT CH 33–48 can be viewed only if 48 is selected in the Input Channels field of the Mixer Setup window when editing offline, or when editing online with the M7CL-48.

The channel name is shown in the boxes immediately below.

### ⑧ Input meter

Indicates the level of the signal being input to the internal effect.

### ⑨ Output patch

Click the L CHANNEL or R CHANNEL area, and choose one of the following as the signal route that will be patched to the L/R output channels of the internal effect.

NONE	No assignment
CH 1–48	INPUT CH 1–48(*)
STIN1L–STIN4R	ST IN channel 1–4 (L/R)
INS CH 1–48(*)	INPUT CH 1–48(*) insert out
INS MIX 1–16	MIX channel 1–16 insert out
MATRIX INSERT1–8	MATRIX channel 1–8 insert out
INS ST L, INS ST R, INS MONO(C)	Insert-out of STEREO channel L/R or the MONO channel

(\*) INPUT CH 33–48 can be viewed only if 48 is selected in the Input Channels field of the Mixer Setup window when editing offline, or when editing online with the M7CL-48.

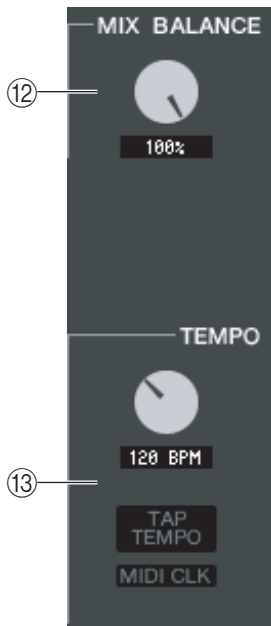
The channel name is shown in the boxes immediately below.

## ⑩ Output meter

Indicates the level of the signal being output from the internal effect.

## ⑪ Parameter display select button

If “046 REV-X Hall,” “047 REV-X ROOM,” or “048 REV-X PLATE” is selected as the effect type, this button switches between the standard parameter screen and a dedicated GUI screen.



## ⑫ MIX BALANCE

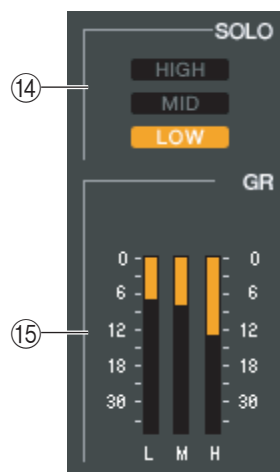
Adjusts the balance of the effect sound relative to the original sound. 0 (%) outputs only the original sound, and 100 (%) outputs only the effect sound.

## ⑬ TEMPO

If a tempo-type or modulation-type effect is selected, this allows you to adjust time-related parameters such as DELAY (delay time) and FREQ. (modulation speed).

To set the value of the TEMPO parameter, you can either input the BPM (Beats Per Minute) in the numerical box, or repeatedly click the TAP TEMPO button at the desired tempo.

If the MIDI CLK button is on, the TEMPO parameter value will synchronize to the MIDI timing clock being received from the MIDI port.

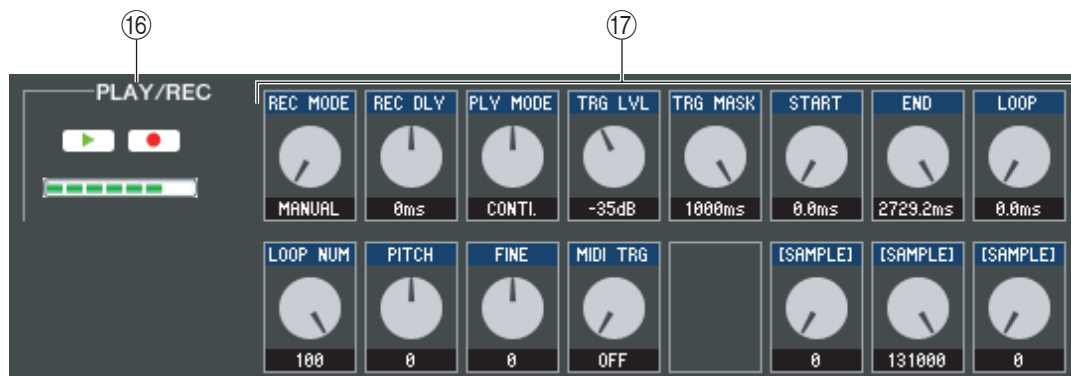


## ⑭ SOLO

If “044 M.BAND DYNA” or “045 M.BAND COMP” are selected as the effect type, these buttons allow you to monitor only the specified band from the three bands HIGH, MID, and LOW.

## ⑮ GR meter

If “044 M.BAND DYNA” or “045 M.BAND COMP” are selected as the effect type, this indicates the gain reduction amount for the H (HIGH), M (MID), and L (LOW) bands.



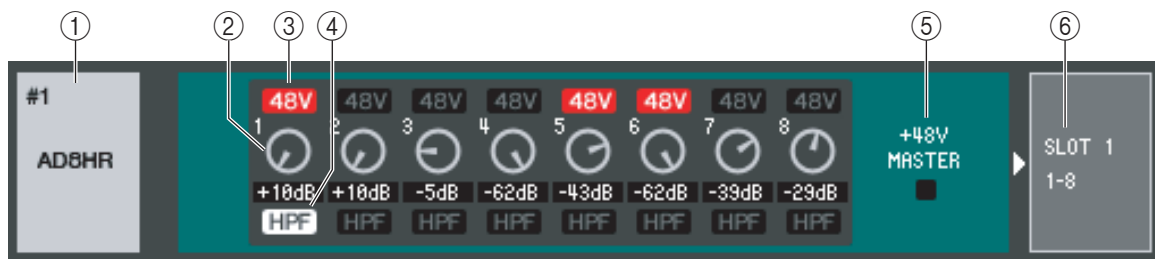
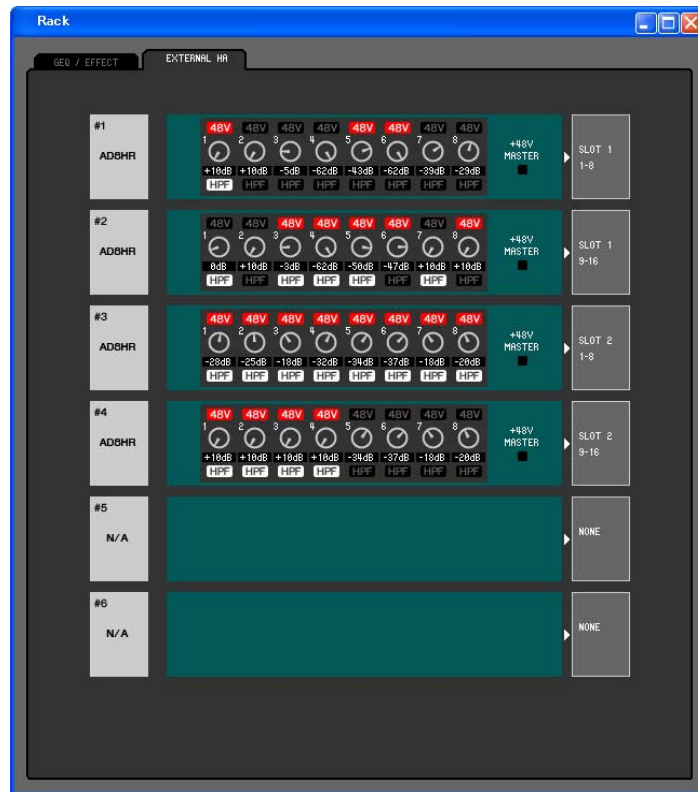
## ⑯ PLAY/REC (Play/Record) buttons

If “042 FREEZE” is selected as the effect type, you can use these buttons to record and play back the signal being input to the effect.

## ⑰ Effect parameters

This area shows the effect parameters and knobs for the currently selected effect type.

# EXTERNAL HA page



## ① External HA name

This shows the model name and ID number of the currently connected external head amp device.

## ② GAIN

This specifies the gain for each channel. The current value is shown in the box below.

## ③ 48V

This switches the phantom power (+48V) on/off for each channel.

## ④ HPF (High Pass Filter)

This switches the HPF on/off for each channel.

## ⑤ +48V MASTER

If an AD8HR is connected, this indicates the on/off status of the master phantom power supply.

## ⑥ Slots/Channels

Here you can select the slots/channels to which the audio outputs of the external head amp device are connected.

NONE
SLOT1 1-8
SLOT1 9-16
SLOT2 1-8
SLOT2 9-16
SLOT3 1-8
SLOT3 9-16

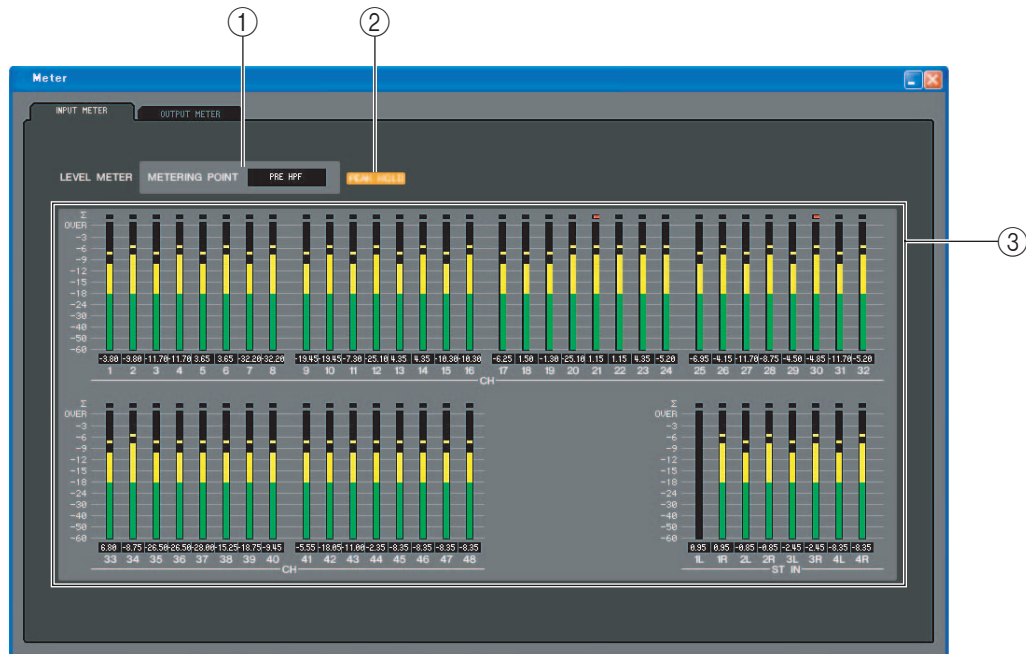
# Meter window

This window shows the signal levels of each section in the M7CL, letting you check for the presence of signals and whether an overload is occurring.

This window is divided into INPUT METER and OUTPUT METER; to switch pages, click the tabs located at the top of the window.

**NOTE** In order to view the M7CL's signal levels in the Meter window, make sure that M7CL Editor and the M7CL itself are synchronized.

## INPUT METER page



### ① METERING POINT

Select one of the following as the point where metering will occur.  
PRE HPF, PRE FADER, POST ON

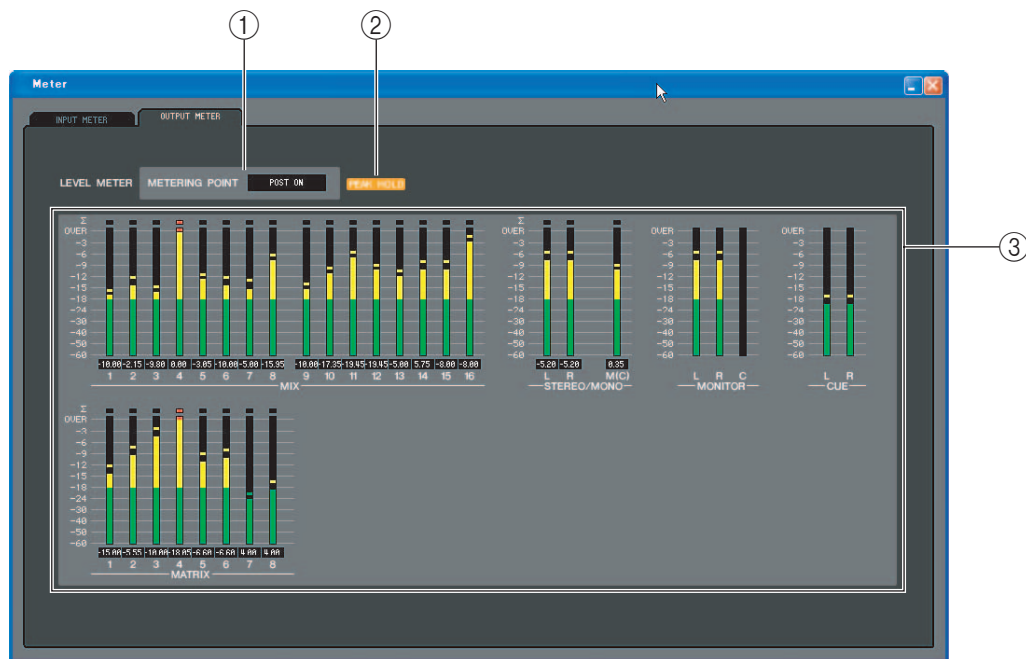
### ② PEAK HOLD

Switches peak hold on/off.

### ③ Meters

These peak level meters show the input level of each channel. The current fader value is shown in the box below. If clipping occurs at any one of the detection points in the channel, the  $\Sigma$  segment will light.

# OUTPUT METER page



## ① METERING POINT

Select one of the following as the point where metering will occur.  
PRE EQ, PRE FADER, POST ON

## ② PEAK HOLD

This is the same as in the INPUT METER page.

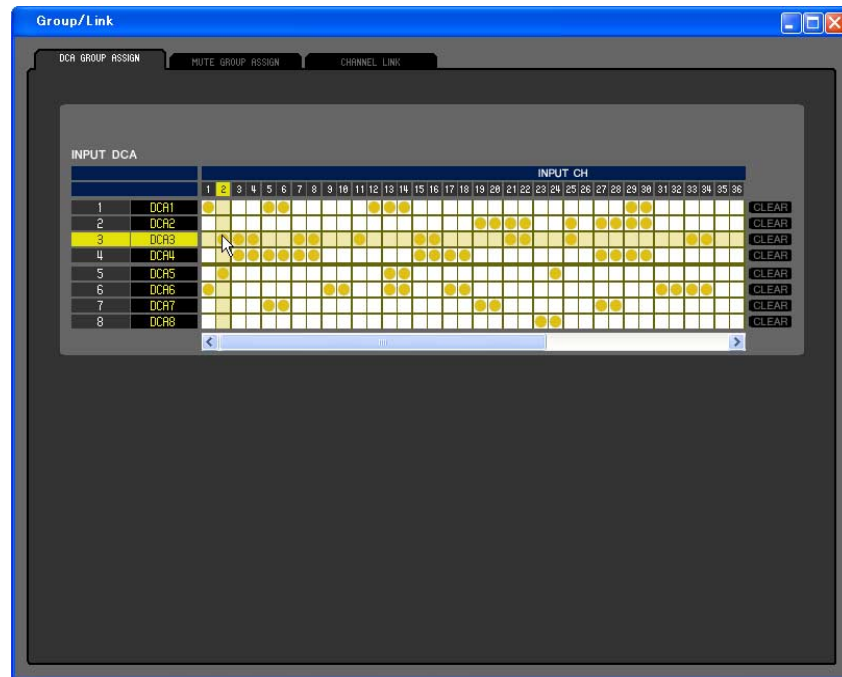
## ③ Meters

This is the same as in the INPUT METER page.

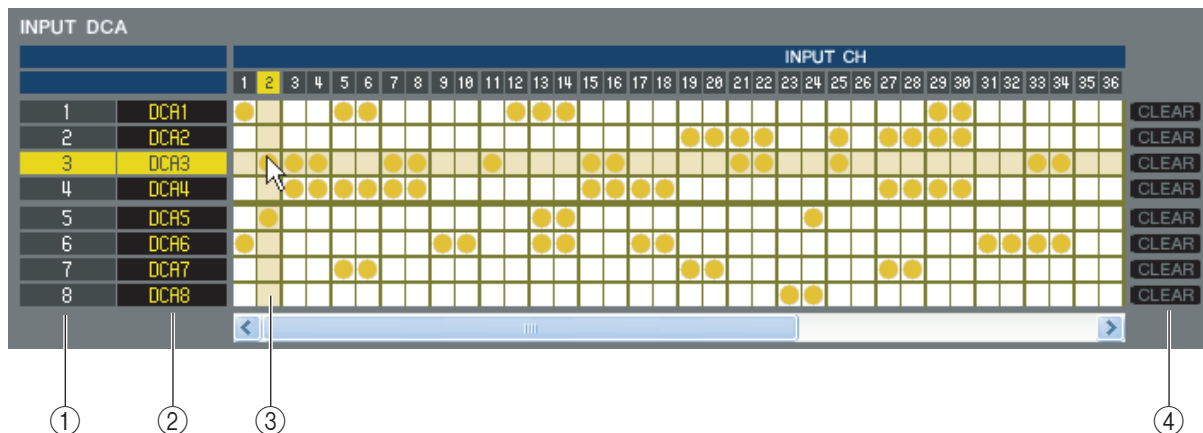
# Group/Link window

In this window you can select the channels that will be assigned to each DCA group and mute group. This window is divided into three pages; the DCA GROUP ASSIGN page, the MUTE GROUP ASSIGN page and CHANNEL LINK page.

## DCA GROUP ASSIGN page



Here you can specify the channels that will be assigned to DCA groups 1–8.



### ① DCA group

This is the number of the DCA group.

### ② DCA group name

This is the name of the DCA group. You can also click the mouse on this area to edit the name.

### ③ Grid

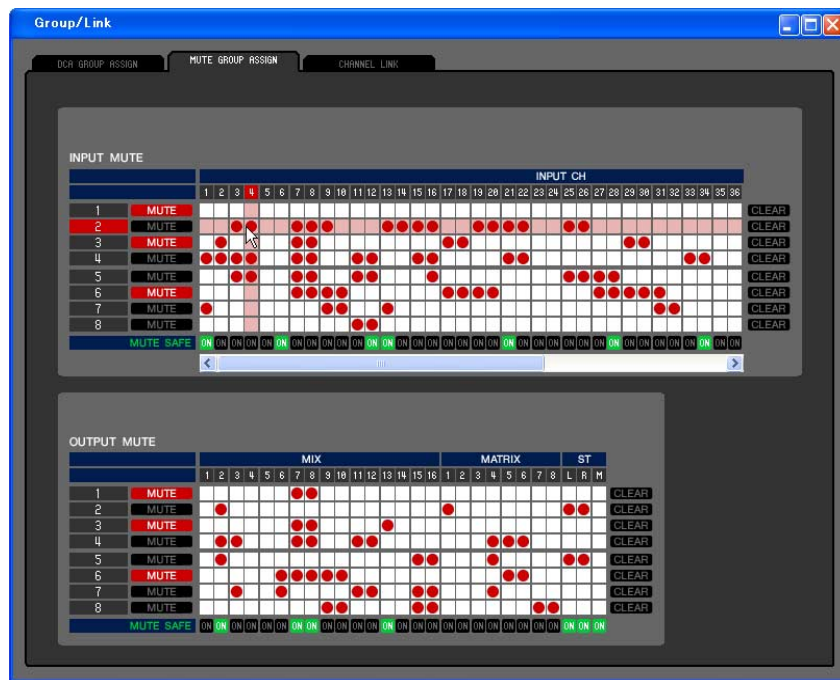
This grid lets you assign channels (horizontal rows) to DCA groups (vertical columns). Currently-patched grids are indicated by a  symbol. To enable or disable an assignment, click the desired grid.

### ④ CLEAR

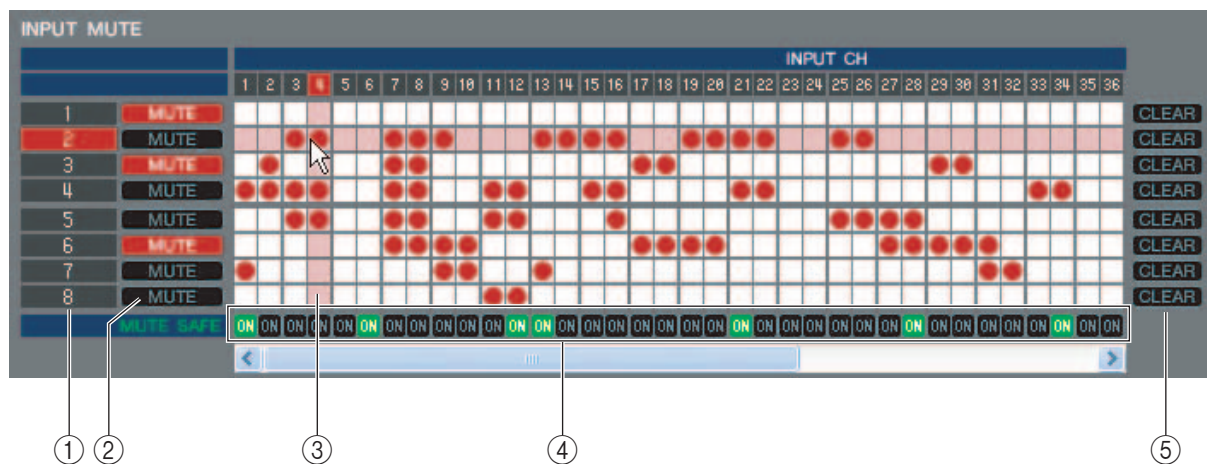
These buttons clear all channels assigned to the corresponding DCA group. When you click one of these buttons a window will appear, asking you to confirm the operation. To execute the Clear operation, click the OK button.



# MUTE GROUP ASSIGN page



Here you can specify the channels that will be assigned to mute groups 1–8. The upper part of the screen lets you assign input channels to mute groups, and the lower part of the screen lets you assign output channels to mute groups.



## ① Mute group

This area shows the mute group number.

## ② MUTE MASTER

These buttons enable/disable each input channel or output channel mute group.

## ③ Grid

This grid lets you assign channels (horizontal rows) to mute groups (vertical columns). Currently-patched grids are indicated by a ● symbol. To enable or disable an assignment, click the desired grid.

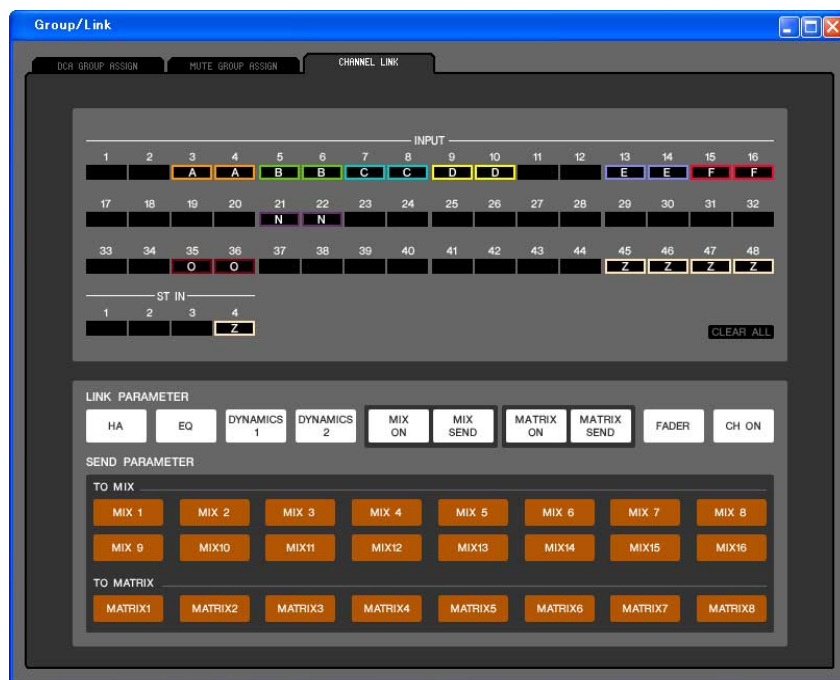
## ④ MUTE SAFE ON

These buttons switch Mute Safe on/off for each channel. Channels for which this button is on will be excluded from mute groups.

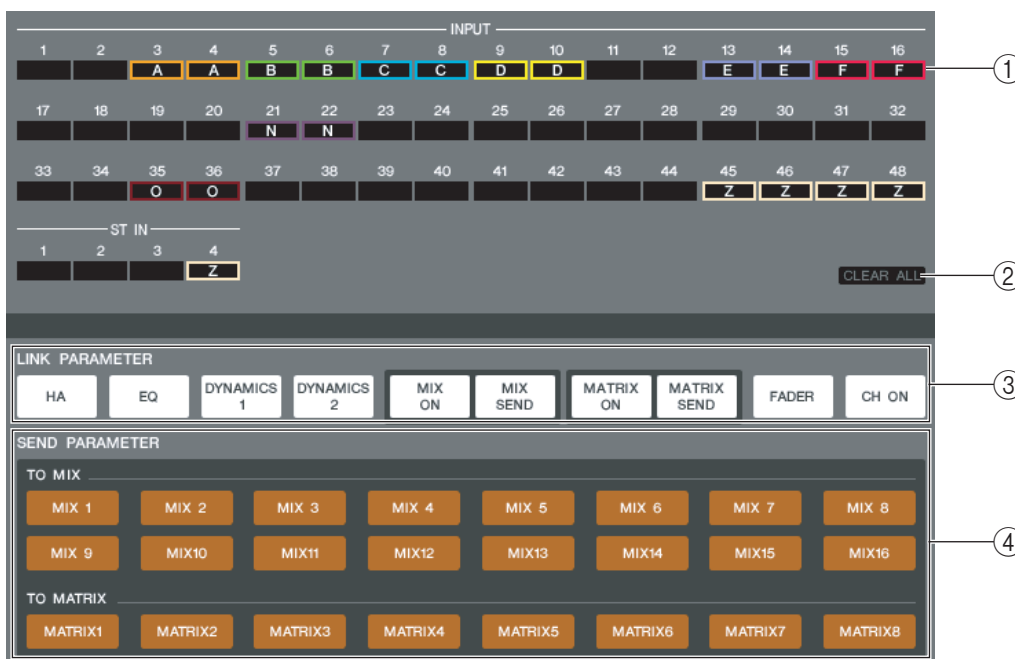
## ⑤ CLEAR

These buttons clear all input channels and output channels assigned to the corresponding mute group. When you click one of these buttons a window will appear, asking you to confirm the operation. To execute the Clear operation, click the OK button.

# CHANNEL LINK page



If you link two or more input channels, the parameters of these channels will interlock with each other and change simultaneously.



## ① Link buttons

Use these buttons to select the link group A–Z (\*) to which you want each input channel to be assigned. If you don't want an input channel to be linked, select NONE. You can assign up to twenty-four (\*) groups for INPUT CH 1–48, and up to two groups for ST IN channels.

(\*) During offline editing when 32 is selected in the Input Channels field of the Mixer Setup window, or during online editing with the M7CL-32 connected, up to sixteen groups can be assigned for INPUT CH 1–32, and you'll be able to choose from link groups A–R.

## ② CLEAR ALL

Clears the link settings for all channels.

### ③ LINK PARAMETER

This section enables you to select the parameters to interlock.

HA	Head amp gain and phantom power settings
DYNAMICS1	Dynamics 1 settings
DYNAMICS2	Dynamics 2 settings
EQ	Equalizer settings
MIX ON	MIX SEND on/off
MIX SEND	Send amount from input channel to MIX bus
MATRIX ON	MATRIX SEND on/off
MATRIX SEND	Send amount from input channel to MATRIX bus
FADER	Fader level value
CH ON	Input channel module output on/off

(\*) INPUT CH 33-48 can be viewed only if 48 is selected in the Input Channels field of the Mixer Setup window when editing offline, or when editing online with the M7CL-48.

**NOTE** *The HA and FADER parameters will maintain level differences between linked channels.*

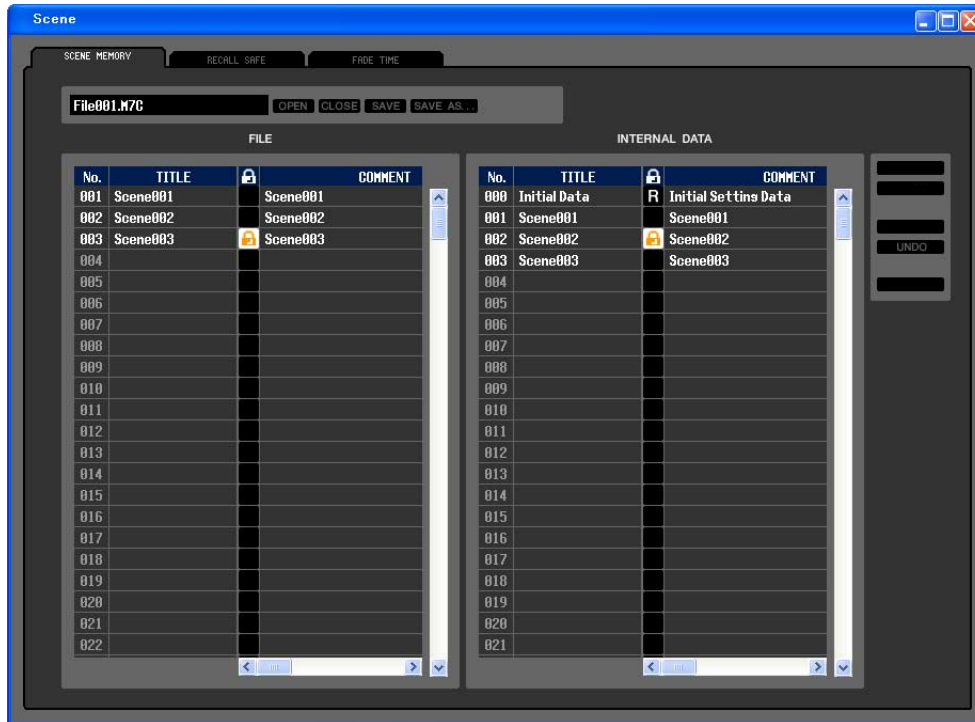
### ④ SEND PARAMETER

Specify the link status for each MIX/MATRIX SEND bus.

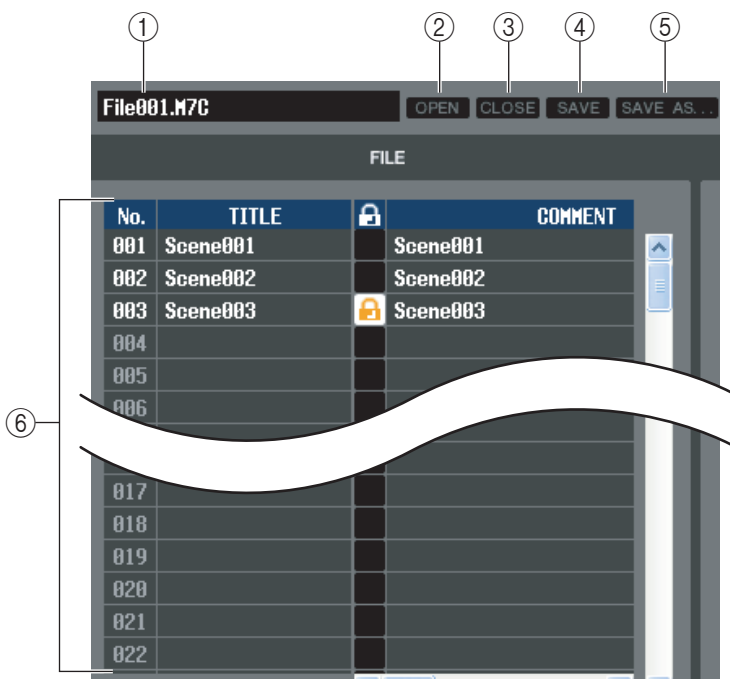
# Scene window

Here you can manage scene memories, and make various settings related to scene recall operations. This window is divided into SCENE MEMORY, RECALL SAFE, and FADE TIME pages. To switch pages, click the tabs shown in the upper part of the window.

## SCENE MEMORY page



Here you can edit the M7CL's scene memories. You can also load scene library files from a USB storage device or from a drive of your computer, and edit them. In this case, you can re-save all scenes to a file after editing, recall just a desired scene, or copy a desired scene to the scene memory of the M7CL itself.



- 1 File name**  
Indicates the file name of the currently-open scene library.
- 2 OPEN (Open a file)**  
Opens a scene library file located on a drive of your computer.
- 3 CLOSE (Close a file)**  
Closes the currently-open scene library file.
- 4 SAVE**  
Saves the currently-open scene library file on a drive of your computer.
- 5 SAVE AS (Save as a different name)**  
Saves the currently-open scene library file under a different name on a drive of your computer.

## ⑥ FILE

This area lists the scenes in the file you opened using the OPEN button (②). The list includes the following items.

**HINT** To view items that are not currently shown, scroll the list to the right.

⑦ No.	⑧ TITLE	⑨	⑩ COMMENT	⑪ FOCUS							⑫ TIME STAMP	⑬ FADING	
000	Initial Data	R	Initial Settings Data	ALL	RACK	HA	IN PATCH	OUT PATCH	IN	OUT			FADING
001	Scene001		Scene001	ALL	RACK	HA	IN PATCH	OUT PATCH	IN	OUT		08/01/2005 00:00:00	FADING
002	Scene002	🔒	Scene002	ALL	RACK	HA	IN PATCH	OUT PATCH	IN	OUT	WITH SEND	08/01/2005 00:00:00	FADING
003	Scene003		Scene003	ALL	RACK	HA	IN PATCH	OUT PATCH	IN	OUT	WITH SEND	08/01/2005 00:00:00	FADING
004													
005													
006													
007													
008													
009													
010													

## ⑦ No.

This is the scene number.

## ⑧ TITLE

This is the scene title. You can also double-click this area and edit the title.

## ⑨ PROTECT

This indicates whether protect is on or off for each scene. This area displays a lock icon for protected scenes; these scenes cannot be overwritten, nor their title edited. Read-only scenes are indicated by “R” displayed in this column.

## ⑩ COMMENT

This column shows the comment assigned to each scene. You can also double-click this column and edit the comment.

## ⑪ FOCUS

From the following list, choose the parameters that will be recalled by a Scene Recall. If you select ALL, the other buttons will be unavailable. Multiple selections are allowed for buttons other than ALL.

ALL	All the settings of the scene will be recalled
RACK	GEQ and internal effect settings will be recalled
HA	Internal head amp and external head amp settings will be recalled
IN PATCH	Input patch settings will be recalled
OUT PATCH	Output patch settings will be recalled
IN	Input channels (INPUT, ST IN, DCA) settings will be recalled except for head amp settings
OUT	Output channel (MIX, MATRIX, STEREO/MONO) settings will be recalled
WITH SEND(*)	Send settings to the output channels will be recalled

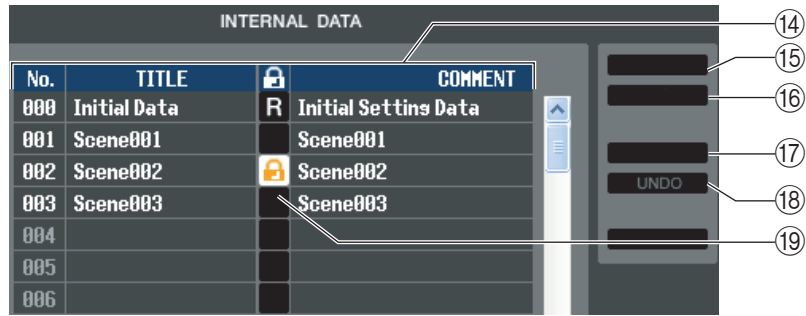
(\*) Can be selected only if OUT is selected

## ⑫ TIME STAMP

Indicates the time at which the scene was last stored, in the format of month/day/year/hours/minutes/seconds. This column is only for display, and cannot be edited.

## ⑬ FADING

This switches fading on/off for each scene.



⑭ **INTERNAL DATA**

This area shows the M7CL's scene memory contents. The items displayed are the same as in the FILE list (⑥). As desired, you can copy single or multiple scenes between the FILE list and the INTERNAL DATA list, and copy or move them to a different location within a list.

⑮ **STORE**

Stores the current settings to the scene that is selected in the list.

⑯ **RECALL**

Recalls the settings of the scene selected in the list.

⑰ **CLEAR**

Clears the scene(s) selected in the list. (The title of the cleared scene(s) will be reset to [No Data!].)

⑱ **UNDO**

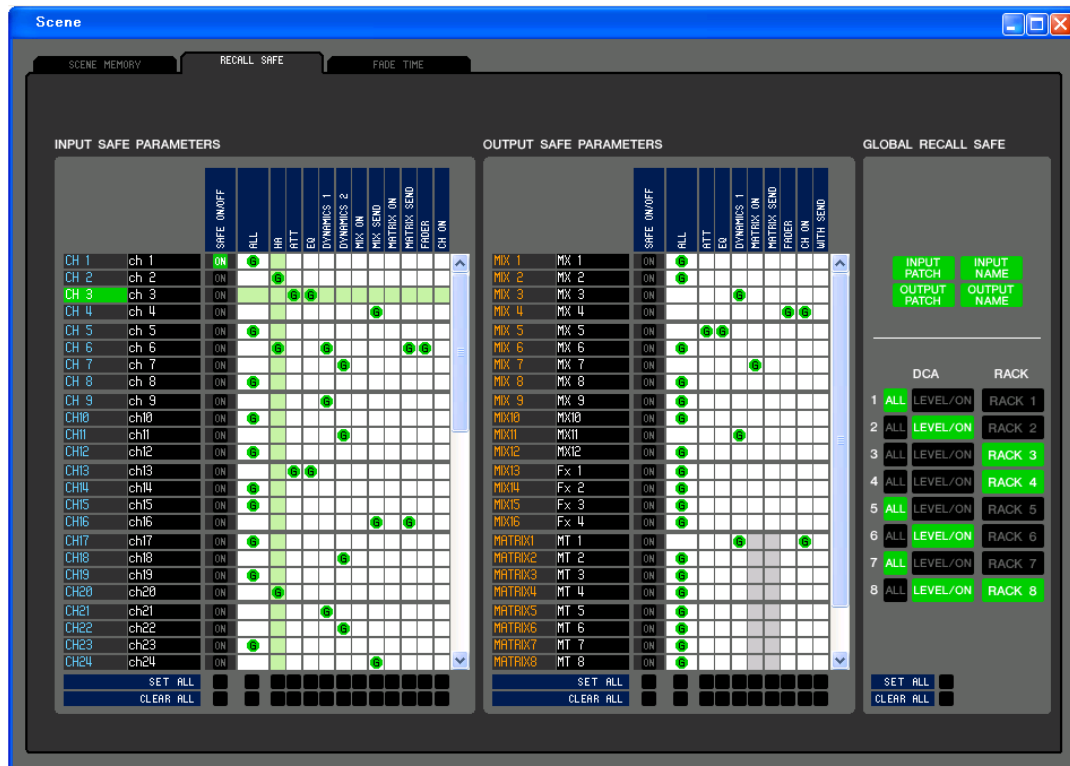
Cancels the last-performed scene recall, store, copy, or move operation.

⑲ **PROTECT**

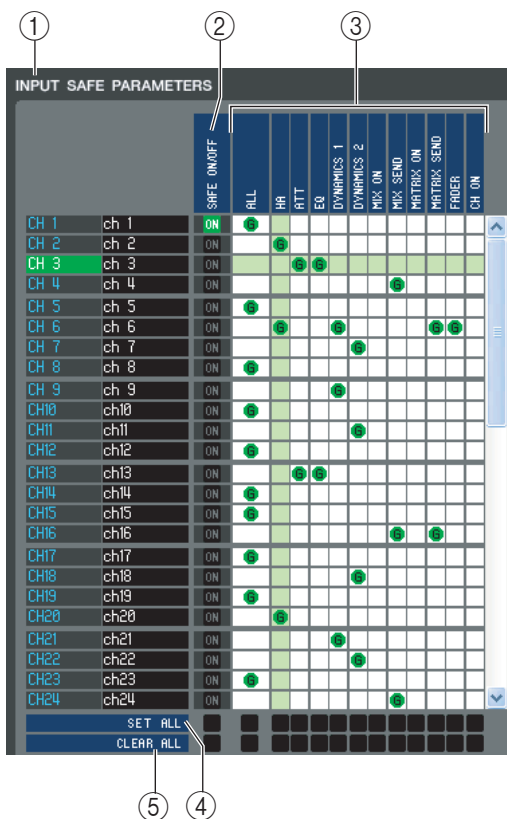
Turns on the Protect setting for the scene(s) selected in the list.



# RECALL SAFE page



Here you can make settings for the Recall Safe function that excludes only specific channels from recall operations of all scenes.



## 1 INPUT SAFE PARAMETERS

In this area you can view and edit the Recall Safe settings for all input channels and ST IN channels. This area contains the following items.

## 2 SAFE ON/OFF

These are on/off buttons that select the channels to be excluded from recall operations.

## 3 Parameter matrix grid

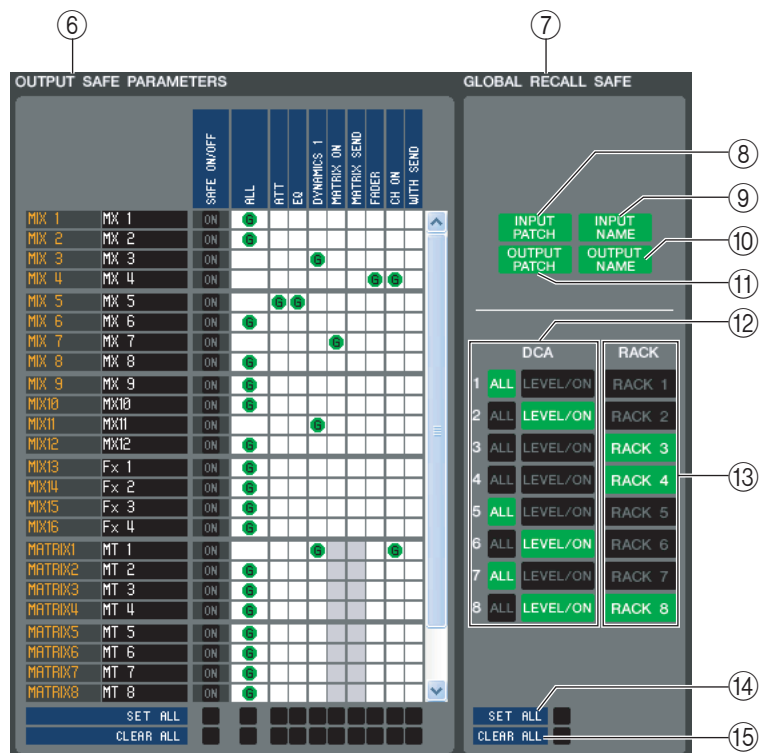
Here you can select the parameters to be excluded from recall operations. If the ALL button is on, all parameters will be excluded.

## 4 SET ALL

These buttons turn on all buttons for all input channels or ST IN channels, or for the corresponding parameter.

## 5 CLEAR ALL

These buttons turn off all buttons for all input channels or ST IN channels, or for the corresponding parameter.



## ⑥ OUTPUT SAFE PARAMETERS

In this area you can view and edit the Recall Safe settings for all output channels. The items in this area are the same as in the Input Safe Parameters area (①).

## ⑦ GLOBAL RECALL SAFE

In this area you can view and edit the Recall Safe settings for patching, DCA groups, and racks.

## ⑧ INPUT PATCH

This on/off button specifies whether INPUT PATCH settings will be excluded from recall operations.

## ⑨ INPUT NAME

This on/off button specifies whether the channel names of input channels will be excluded from recall operations.

## ⑩ OUTPUT NAME

This on/off button specifies whether the channel names of output channels will be excluded from recall operations.

## ⑪ OUTPUT PATCH

This on/off button specifies whether OUTPUT PATCH settings will be excluded from recall operations.

## ⑫ DCA

These buttons exclude DCA groups from recall operations. If the ALL button is on, the LEVEL, ON, and DCA group names will be excluded. If the LEVEL/ON button is on, LEVEL and ON settings will be excluded.

## ⑬ RACK

This on/off button specifies whether RACK settings will be excluded from recall operations.

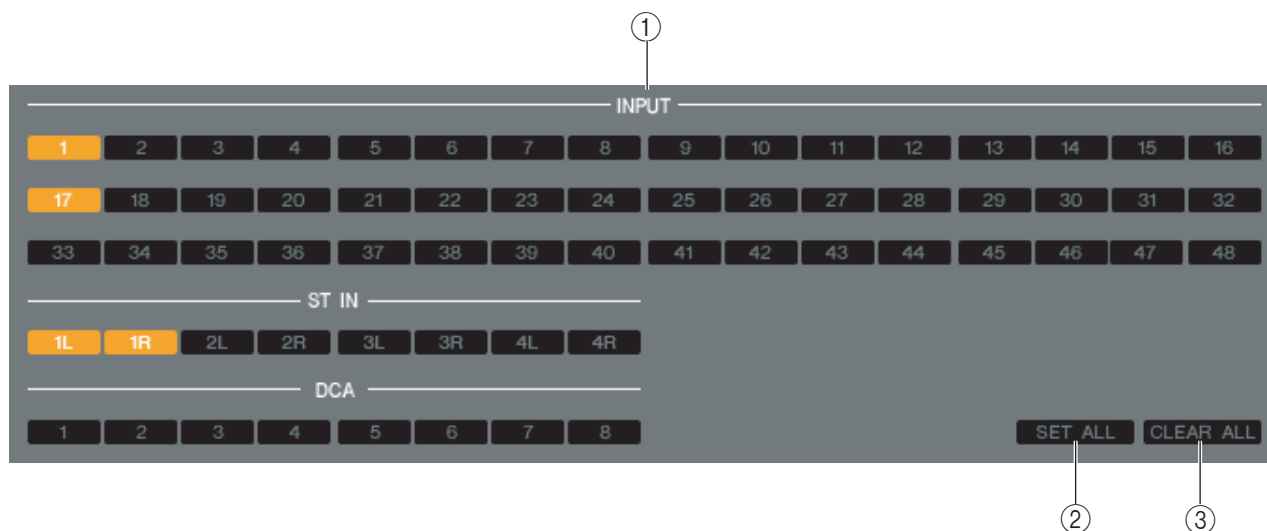
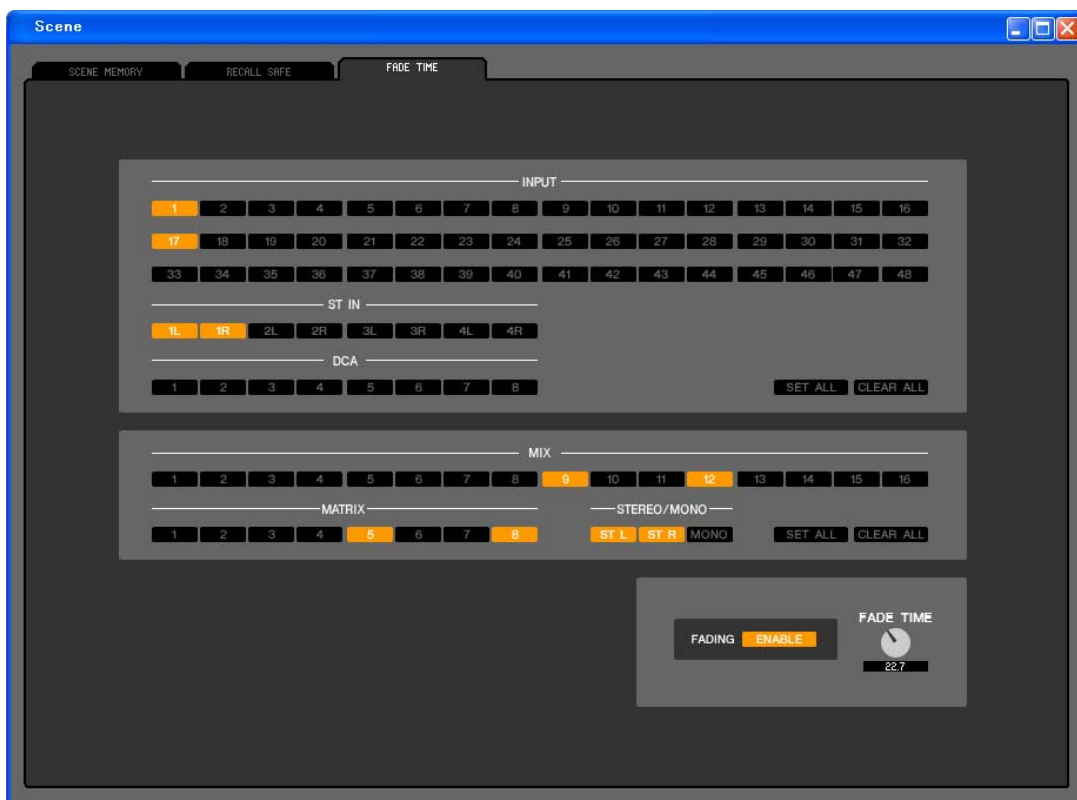
## ⑭ SET ALL

This button switches on all buttons for parameters 8–13.

## ⑮ CLEAR ALL

This button switches off all buttons for parameters 8–13.

# FADE TIME page



Here you can make settings for the Fade Time function which adjusts the time over which fader and pan will reach their new values when a scene is recalled. Since the Fade function settings are independent for each scene, you must recall the desired scene before you make these settings.

## ① INPUT CHANNEL FADING ENABLE

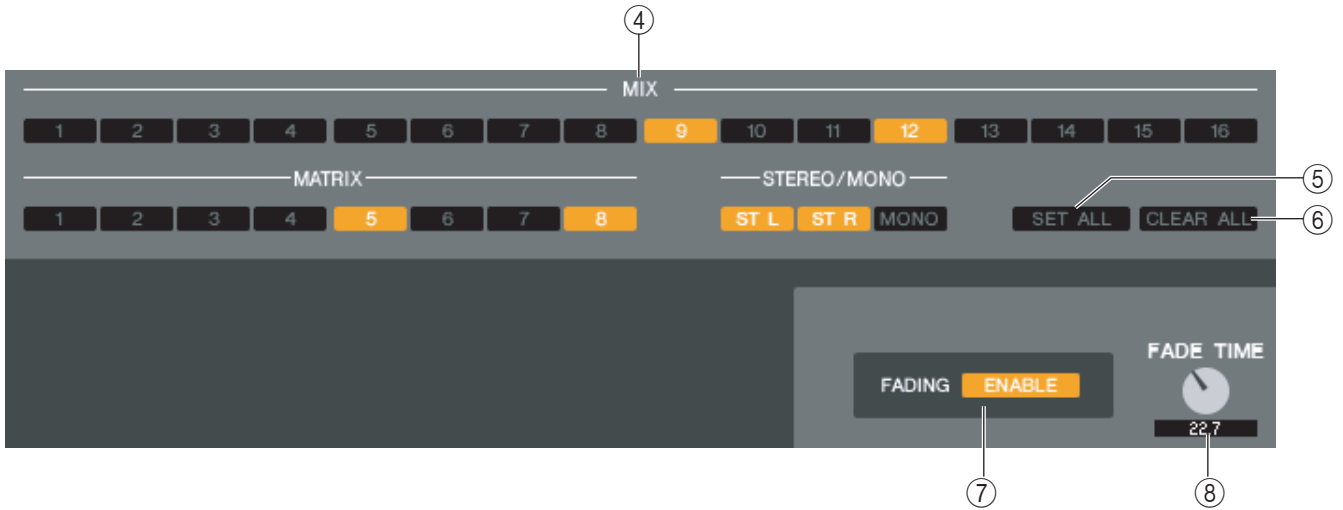
These on/off buttons select the input channels that will be excluded from recall operations.

## ② SET ALL

This button switches on the buttons of all input channels.

## ③ CLEAR ALL

This button switches off the buttons of all input channels.



④ **OUTPUT CHANNEL FADING ENABLE**

These are on/off buttons that select the output channels that will be excluded from recall operations.

⑤ **SET ALL**

This button switches on the buttons of all output channels.

⑥ **CLEAR ALL**

This button switches off the buttons of all output channels.

⑦ **FADING ENABLE**

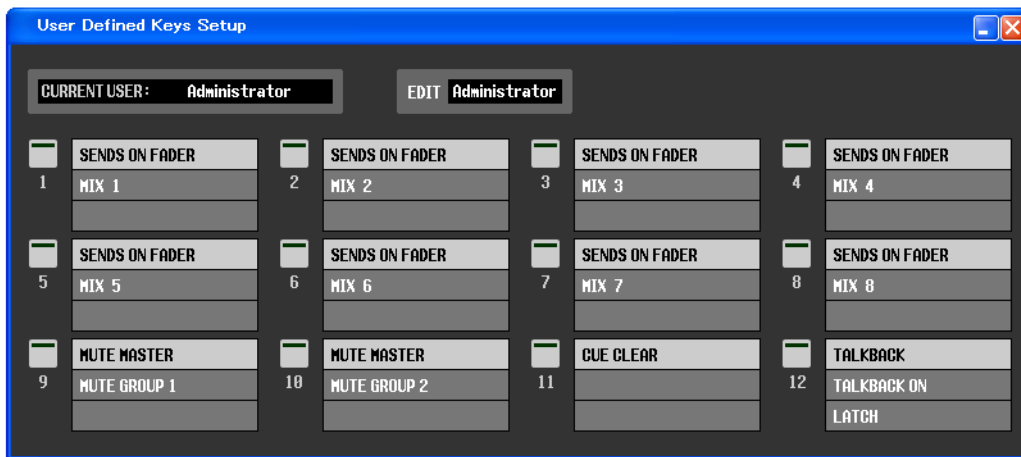
This button enables/disables the Fade function for the faders of the current scene.

⑧ **FADE TIME**

Drag this knob in the screen to adjust the fade time. The current value is shown in the numerical box immediately below.

# User Defined Keys Setup window

In this window, you can specify the functions or parameters to be assigned to the User Defined keys.



**NOTE** You can view and edit the INPUT CH 33–48 parameters only during editing online with the M7CL-48, or only when “48” is selected as the Input Channel numbers in the Mixer Setup window during offline editing.

## □ CURRENT USER

Displays the name of the user currently logged into the M7CL console. If the M7CL has not yet been synchronized with the Editor, this field displays “Administrator.”

## □ EDIT

Displays and enables you to specify the user level (Administrator, Guest, or Ext.User) of the User Defined keys that you are editing.

“Ext.User” is the user who is currently logged into the M7CL console via a user authentication key stored on a USB storage device. You can select this user only when the M7CL console is synchronized with the Editor.

**NOTE** Ext.User’s User Defined key settings will not be stored in a session file.

## □ Function names

Select the functions or parameters you wish to assign to the User Defined keys.

Click a User Defined key to open the Parameter List dialog box.

For more information on the assignable parameters, please refer to the “M7CL Owner’s Manual” and the “M7CL V2.0 Supplementary Manual.”

# Keyboard Shortcuts

Menu	Action	Key operation
File menu	Creates a new Session	Ctrl+N
	Opens a previously saved Session	Ctrl+O
	Saves the current Session	Ctrl+S
Edit menu	Undo	Ctrl+Z
	Redo	Ctrl+Y
Windows menu	Closes the active window	Ctrl+W
	Closes all windows	Ctrl+Alt+W
	Tiles all windows	Ctrl+T
	Cascades all windows	Ctrl+Alt+T
	Opens the Master window	Ctrl+1
	Opens the INPUT CH (CH1-16) window	Ctrl+Alt+1
	Opens the INPUT CH (CH17-32) window	Ctrl+Alt+2
	Opens the INPUT CH (CH33-48) window	Ctrl+Alt+3
	Opens the ST IN window	Ctrl+Alt+4
	Opens the MIX window	Ctrl+Alt+5
	Opens the MATRIX window	Ctrl+Alt+6
	Opens the STEREO/MONO window	Ctrl+Alt+7
	Opens the MATRIX window	Ctrl+Alt+8
	Opens the Selected Channel window	Ctrl+3
	Opens the Library window	Ctrl+4
	Opens the Patch Editor window	Ctrl+5
	Opens the Rack window	Ctrl+6
	Opens the Meter window	Ctrl+7
Opens the Group/Link window	Ctrl+8	
Opens the Scene window	Ctrl+9	
Synchronization menu	Opens the Re-Synchronize window	Ctrl+0
Library window or SCENE MEMORY page of the Scene window	Selects consecutive multiple items (memories)	Shift+click
	Selects non-consecutive multiple items (memories)	Ctrl+click
	Selects all memories in a section	Ctrl+A



# Index

- B**  
BYPASS ..... 55
- C**  
CLEAR ..... 44, 66  
CLEAR ALL ..... 45, 62, 67–70  
CLOSE ..... 42, 64  
COMMENT ..... 65  
Ctrl+click ..... 8  
Ctrl+Shift+Click ..... 8
- D**  
DCA fader ..... 22  
DCA group ..... 60  
DCA window ..... 22  
DIRECT OUTPUT PATCH  
page ..... 47
- E**  
Effect  
GR meter ..... 56  
SOLO ..... 56  
EFFECT module ..... 54  
Effect parameters ..... 56  
EFFECT TYPE ..... 55  
EQ FLAT ..... 53
- F**  
Fade ..... 70  
Fade function (enables/disables) ... 70  
FADE TIME page ..... 69  
FADING ENABLE ..... 69  
FILE ..... 43, 65  
File  
Close ..... 42, 64  
Open ..... 42, 64  
FROM MIX, ST/MONO ..... 38
- G**  
GEQ faders ..... 53  
GEQ graph ..... 53  
GEQ module ..... 51  
Group/Link window ..... 60  
CHANNEL LINK page ..... 62  
DCA GROUP ASSIGN page ... 60  
MUTE GROUP ASSIGN  
page ..... 61
- I**  
INPUT CH window ..... 11  
INPUT INSERT PATCH page ..... 46  
INPUT PATCH page ..... 45  
INTERNAL DATA ..... 43, 66
- K**  
Keyboard Shortcuts ..... 72
- L**  
Library window ..... 42
- M**  
Master window ..... 9  
MATRIX Bus Setup ..... 12  
MATRIX SEND ..... 20  
MATRIX window ..... 18  
Meter window ..... 58  
MIX BALANCE ..... 56  
MIX Bus Setup ..... 12  
MIX/CH/ST IN ..... 19  
MIX/MATRIX SEND ..... 25  
MONO ..... 40  
Mute group ..... 61  
MUTE MASTER ..... 61  
MUTE SAFE ON ..... 61
- O**  
Offline Edit ..... 8  
OPEN ..... 42, 64  
OUTPUT INSERT PATCH  
page ..... 47  
OUTPUT PATCH page ..... 46
- P**  
Patch Editor window ..... 45  
DIRECT OUTPUT PATCH  
page ..... 47  
INPUT INSERT PATCH  
page ..... 46  
INPUT PATCH page ..... 45  
OUTPUT INSERT PATCH  
page ..... 47  
OUTPUT PATCH page ..... 46  
PATCH LIST page ..... 48  
PATCH LIST page ..... 48  
PLAY/REC ..... 56  
PROTECT ..... 65, 66
- R**  
Rack window ..... 49  
RECALL ..... 44, 66  
Recall Safe ..... 67  
RECALL SAFE page ..... 67  
REDO ..... 6  
Re-synchronize ..... 8
- S**  
SAVE ..... 42, 64  
SAVE AS ..... 42, 64  
Save as a different name ..... 64  
Save under a different name ... 42  
SCENE MEMORY page ..... 64  
Scene window ..... 64  
FADE TIME page ..... 69  
RECALL SAFE page ..... 67  
SCENE MEMORY page ..... 64  
Selected Channel window ..... 23  
Channel selection ..... 24, 40  
COMPANDER ..... 30  
COMPRESSOR,  
EXPANDER ..... 29  
DCA GROUP  
/MUTE GROUP ..... 33  
DE-ESSER ..... 31  
EQUALIZER ..... 27, 36  
Fader ..... 33, 39, 41  
FROM MIX, ST/MONO ..... 38  
GATE/DUCKING ..... 28  
HA GAIN/Ø/HP ..... 25  
Input channel ..... 23  
INSERT ..... 32  
MATRIX channel ..... 38  
MIX channel ..... 34  
MIX/MATRIX SEND ..... 25  
Pan / Fader ..... 37  
RECALL SAFE/MUTE SAFE ... 33  
STEREO/MONO channel ..... 40  
To MATRIX ..... 34  
TO STEREO/MONO ..... 26, 35  
Sessions ..... 6  
SET ALL ..... 67–70  
Setup  
Mixer ..... 3  
System ..... 2  
ST IN window ..... 14  
STEREO/MONO window ..... 20  
STORE ..... 44, 66  
Synchronize ..... 8
- T**  
Tabs ..... 7  
TEMPO ..... 56  
TIME STAMP ..... 65
- U**  
UNDO ..... 6, 44, 66  
User Defined Keys Setup  
window ..... 71  
USER KEY ..... 4
- Y**  
Yamaha Pro Audio Global Site ..... 1