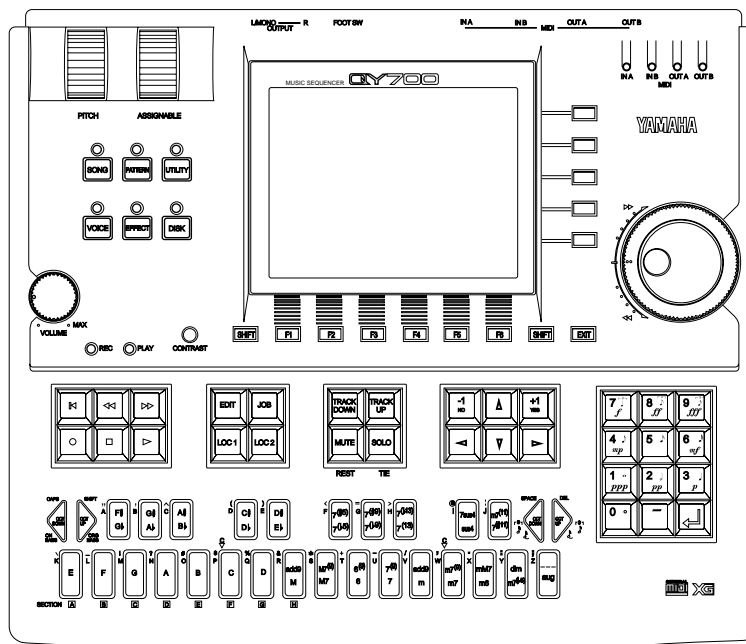


YAMAHA

MUSIC SEQUENCER

QY700

Reference Listings



Contents

XG Voice List.....	2
XG Drum List.....	6
Effect Type List.....	7
Effect Parameter List.....	8
Data/Value Correspondence Tables	13
Phrase List.....	15
Chord Type List	30
Groove Template List	32
MIDI Data Format.....	33
MIDI Implementation Chart.....	41

XG Drum List (Bank 127~126)

Bank Select MSB=Bank Number, LSB=000

Bank Select MSB=127,
LSB=111

Bank	127	127	127	127	127	127	127	127	126	126						
Program #	1	2	9	17	25	26	33	41	49	1	2					
Note#	off	assign	Alternate	Standard Kit	Standard2 Kit	Room Kit	Rock Kit	Electro Kit	Analog Kit	Jazz Kit	Brush Kit	Classic Kit	SFX 1	SFX 2		
13	C#	-1	3	Surdo	Mute											
14	D	-1	3	Surdo	Open											
15	D#	-1		Hi Q												
16	E	-1		Whip	Slap											
17	F	-1	4	Scratch	Push											
18	F#	-1	4	Scratch	Pull											
19	G	-1		Finger	Snap											
20	G#	-1		Click	Noise											
21	A	-1			Metronome Click											
22	A#	-1			Metronome Bell											
23	B	-1		Seq Click	L											
24	C	0		Seq Click	H											
25	C#	0		Brush	Tap											
26	D	0	O		Brush Swirl L											
27	D#	0	O		Brush	Slap										
28	E	0	O		Brush Swirl H			Reverse	Cymbal	Reverse Cymbal						
29	F	0	O		Snare Roll	Snare Roll 2										
30	F#	0		Castanet		Hi Q	Hi Q									
31	G	0		Snare L	Snare L 2	SD	Rock M	Snare M	SD Rock H	Brush Slap L						
32	G#	0		Sticks												
33	A	0		Bass	Drum L		Bass Drum M	Bass Drum H 4	Bass Drum M		Bass Drum	L2				
34	A#	0		Open	Rim Shot		Open Rim Shot 2									
35	B	0		Bass	Drum M	Bass Drum M 2		Bass Drum H 3	BD Rock	BD Analog L		Gran Cassa				
36	C	1		Bass	Drum H	Bass Drum H 2		BD Rock	BD Gate	BD Analog H	BD Jazz	BD Soft	Gran Cassa Mute	Guitar Cutting Noise	Dial Tone	
37	C#	1		Side	Stick		Analog Side	Stick			Guitar	Cutting Noise	2	Door Creaking		
38	D	1		Snare M	Snare M 2	SD Room L	SD Rock	SD Rock L	Analog Snare L	Brush Slap	Marching Sn	M	Door Slam			
39	D#	1		Hand	Clap				String Slap	Scratch						
40	E	1		Snare H	Snare H 2	SD Room H	SD Rock Rim	SD Rock H	Analog Snare H	Brush Tap	Marching Sn	H	Scratch 2			
41	F	1		Floor	Tom L	Room	Tom 1	Rock Tom 1	E Tom 1	Analog Tom 1	Jazz Tom 1	Brush Tom 1	Jazz Tom 1	Windchime		
42	F#	1	1	Hi-Hat	Closed			Analog HH	Closed 1			Telephone	Ring2			
43	G	1		Floor	Tom H	Room	Tom 2	Rock Tom 2	E Tom 2	Analog Tom 2	Jazz Tom 2	Brush Tom 2	Jazz Tom 2			
44	G#	1	1	Hi-Hat	Pedal			Analog HH	Closed 2							
45	A	1		Low Tom		Room	Tom 3	Rock	Tom 3	E Tom 3	Analog Tom 3	Jazz Tom 3	Brush Tom 3	Jazz Tom 3		
46	A#	1	1	Hi-Hat	Open			Analog HH	Open	Analog Tom 3	Jazz Tom 3	Brush Tom 3	Jazz Tom 3			
47	B	1		Mid Tom		Room Tom 4	Rock Tom 4	E Tom 4	Analog Tom 4	Jazz Tom 4	Brush Tom 4	Jazz Tom 4	Jazz Tom 4			
48	C	2		Mid Tom	H	Room Tom 5	Rock Tom 5	E Tom 5	Analog Tom 5	Jazz Tom 5	Brush Tom 5	Jazz Tom 5	Jazz Tom 5			
49	C#	2		Crash	Cymbal 1			Analog Cymbal		Hand Cym.Open	L					
50	D	2		High Tom	Room	Tom 6	Rock	Tom 6	E Tom 6	Analog Tom 6	Jazz Tom 6	Brush Tom 6	Jazz Tom 6			
51	D#	2		Ride	Cymbal 1					Hand		Cym.Closed	L			
52	E	2		Chinese	Cymbal						FL.Key Click	Engine Start				
53	F	2		Ride	Cymbal Cup						Tire	Screech				
54	F#	2		Tambourine							Car	Passing				
55	G	2		Splash	Cymbal						Crash					
56	G#	2		Cowbell		Analog	Cowbell				Siren					
57	A	2		Crash	Cymbal 2				Hand Cym.Open	H		Train				
58	A#	2		Vibraslap						Jetplane						
59	B	2		Ride	Cymbal 2					Hand	Cym.Closed	H	Starship			
60	C	3		Bongo H						Burst Noise						
61	C#	3		Bongo L						Coaster						
62	D	3		Conga H	Mute			Analog Conga	H			SbMarine				
63	D#	3		Conga H	Open			Analog Conga	M							
64	E	3		Conga L		Analog	Conga L									
65	F	3		Timbale	H											
66	F#	3		Timbale	L											
67	G	3		Agogo H					Rain	Laughing						
68	G#	3		Agogo L					Thunder	Screaming						
69	A	3		Cabasa		Analog	Maracas			Wind	Punch					
70	A#	3		Maracas						Stream	Heartbeat					
71	B	3	O		Samba Whistle H					Bubble	Footsteps					
72	C	4	O		Samba Whistle L											
73	C#	4		Guiro	Short					Feed						
74	D	4	O		Guiro Long											
75	D#	4		Claves		Analog	Claves									
76	E	4		Wood	Block H											
77	F	4		Wood	Block L											
78	F#	4		Cuica	Mute	Scratch Push	Scratch Push									
79	G	4		Cuica	Open	Scratch Pull	Scratch Pull									
80	G#	4	2	Triangle	Mute											
81	A	4	2	Triangle	Open											
82	A#	4		Shaker												
83	B	4		Jingle	Bell											
84	C	5		Bell Tree					Dog	Machine	Gun					
85	C#	5							Horse Gallop	Laser Gun						
86	D	5							Bird 2	Explosion						
87	D#	5							FireWork							
88	E	5														
89	F	5														
90	F#	5							Ghost							
91	G	5							Maou							

[Grey box] : Drum map can be selected from any desired kit

[Light Grey box] : Same as Standard Kit

[Dark Grey box] : No sound

REVERB

No.	Exclusive		Effect Type	Description
	MSB	LSB		
0	0	0	NO EFFECT	Effect turned off.
1	1	0	HALL1	Reverb simulating the resonance of a hall.
2	1	1	HALL2	Reverb simulating the resonance of a hall.
3	2	0	ROOM1	Reverb simulating the resonance of a room.
4	2	1	ROOM2	Reverb simulating the resonance of a room.
5	2	2	ROOM3	Reverb simulating the resonance of a room.
6	3	0	STAGE1	Reverb appropriate for a solo instrument.
7	3	1	STAGE2	Reverb appropriate for a solo instrument.
8	4	0	PLATE	Reverb simulating a metal plate reverb unit.
9	10	0	WHITE ROOM	A unique short reverb with a bit of initial delay.
10	11	0	TUNNEL	Simulation of a tunnel space expanding to left and right.
11	13	0	BASEMENT	A bit of initial delay followed by reverb with a unique resonance.

CHORUS

No.	Exclusive		Effect Type	Description
	MSB	LSB		
0	0	0	NO EFFECT	Effect turned off.
1	41	0	CHORUS1	Conventional chorus program that adds natural spaciousness.
2	41	1	CHORUS2	Conventional chorus program that adds natural spaciousness.
3	41	2	CHORUS3	Conventional chorus program that adds natural spaciousness.
4	41	8	CHORUS4	Chorus with stereo input. The pan setting specified for the Part will also apply to the effect sound.
5	42	0	CELESTE1	A 3-phase LFO adds modulation and spaciousness to the sound.
6	42	1	CELESTE2	A 3-phase LFO adds modulation and spaciousness to the sound.
7	42	2	CELESTE3	A 3-phase LFO adds modulation and spaciousness to the sound.
8	42	8	CELESTE4	CELESTE with stereo input. The pan setting specified for the Part will also apply to the effect sound.
9	43	0	FLANGER1	Adds a jet-airplane effect to the sound.
10	43	1	FLANGER2	Adds a jet-airplane effect to the sound.
11	42	8	FLANGER3	Adds a jet-airplane effect to the sound.

VARIATION

No.	Exclusive		Effect Type	Description
	MSB	LSB		
0	0	0	NO EFFECT	Effect turned off.
1	1	0	HALL1	Reverb simulating the resonance of a hall.
2	1	1	HALL2	Reverb simulating the resonance of a hall.
3	2	0	ROOM1	Reverb simulating the resonance of a room.
4	2	1	ROOM2	Reverb simulating the resonance of a room.
5	2	2	ROOM3	Reverb simulating the resonance of a room.
6	3	0	STAGE1	Reverb appropriate for a solo instrument.
7	3	1	STAGE2	Reverb appropriate for a solo instrument.
8	4	0	PLATE	Reverb simulating a metal plate reverb unit.
9	5	0	DELAY L,C,R	A program that creates three delay sounds; L, R, and C (center).
10	6	0	DELAY L,R	A program that creates two delay sounds; L and R. Two feedback delays are provided.
11	7	0	ECHO	Two delays (L and R) and independent feedback delays for L and R.
12	8	0	CROSS DERAY	A program that crosses the feedback of two delays.
13	9	0	ER1	An effect that produces only the early reflection component of reverb.
14	9	1	ER2	An effect that produces only the early reflection component of reverb.
15	A	0	GATE REBERB	A simulation of gated reverb.
16	B	0	REBERSE GATE	A program that simulates gated reverb played backwards.
17	14	0	KARAOKE 1	A delay with feedback of the same type as used for karaoke reverb.
18	14	1	KARAOKE 2	A delay with feedback of the same type as used for karaoke reverb.
19	14	2	KARAOKE 3	A delay with feedback of the same type as used for karaoke reverb.
20	41	0	CHORUS1	A conventional chorus program, providing natural spaciousness.
21	41	1	CHORUS2	A conventional chorus program, providing natural spaciousness.
22	41	2	CHORUS3	A conventional chorus program, providing natural spaciousness.
23	41	8	CHORUS4	Chorus with stereo input.
24	42	0	CELESTE1	A 3-phase LFO adds modulation and spaciousness to the sound.
25	42	1	CELESTE2	A 3-phase LFO adds modulation and spaciousness to the sound.
26	42	2	CELESTE3	A 3-phase LFO adds modulation and spaciousness to the sound.
27	42	8	CELESTE4	Celeste with stereo input.
28	43	0	FLANGER1	Adds a jet-airplane effect to the sound.
29	43	1	FLANGER2	Adds a jet-airplane effect to the sound.
30	43	8	FLANGER3	Adds a jet-airplane effect to the sound.
31	44	0	SYMPHONIC	A multi-phase version of CELESTE.
32	45	0	ROTARY SPEAKER	A simulation of a rotary speaker. You can use an AC1 (assignable controller) etc. to control the speed of rotation.
33	46	0	TREMOLO	An effect that cyclically modulates the volume.
34	47	0	AUTO PAN	A program that cyclically moves the sound image to left and right, front and back.
35	48	0	PHASER1	Cyclically changes the phase to add modulation to the sound.
36	48	8	PHASER2	Phaser with stereo input.
37	49	0	DISTORTION	Adds a sharp-edged distortion to the sound.
38	4A	0	OVER DRIVE	Adds mild distortion to the sound.
39	4B	0	AMP SIMULATOR	A simulation of a guitar amp.
40	4C	0	3BAND EQ(MONO)	A mono EQ with adjustable LOW, MID, and HIGH equalizing.
41	4D	0	2BAND EQ(STEREO)	A stereo EQ with adjustable LOW and HIGH. Ideal for drum Parts.
42	4E	0	AUTO WAH(LFO)	Cyclically modulates the center frequency of a wah filter. With an AC1 etc. this can function as a pedal wah.
43	40	0	THRU	Bypass without applying an effect.

Effect Parameter List

Reverb Type

[00] No Effect

[01] Rev Hall 1 ~ [08] Rev Plate

No.	Parameter (MIDI)	Display	Value	Table	MW.FC
1	Reverb Time	0.3~30.0s	0-69	tb_rvt	
2	Diffusion	0~10	0-10		
3	Initial Delay	0.1~99.3ms	0-63	tb_dly200	
4	HPF Cutoff	Thru~8.0kHz	0-52	disp_fc	
5	LPF Cutoff	1.0kHz~Thru	34-60	disp_fc	
6					
7					
8					
9					
10					
11	*Rev Delay	0.1~99.3ms	0-63	tb_dly200	
12	*Density	0~3	0-3		
13	*Rev/Er Balance	R<E63 - R=E -R63>E	1-127		
14					
15	*Feedback Level	-63~+63	1-127		
16					

[09] Rev WhiteRm ~ [11] Rev Basemnt

No.	Parameter (MIDI)	Display	Value	Table	MW.FC
1	Reverb Time	0.3~30.0s	0-69	tb_rvt	
2	Diffusion	0~10	0-10		
3	Initial Delay	0.1~99.3ms	0-63	tb_dly200	
4	HPF Cutoff	Thru~8.0kHz	0-52	disp_fc	
5	LPF Cutoff	1.0kHz~Thru	34-60	disp_fc	
6	*Width	0.5~10.2m	0-37		
7	*Height	0.5~20.2m	0-73		
8	*Depth	0.5~30.2m	0-104		
9	*Wall Vary	0~30	0-30		
10					
11	*Rev Delay	0.1~99.3ms	0-63	tb_dly200	
12	*Density	0~3	0-3		
13	*Rev/Er Balance	R<E63-R=E-R63>E	1-127		
14					
15	*Feedback Level	-63~+63	1-127		
16					

Chorus Type

[00] No Effect

[01] Chorus 1 ~ [08] Celeste 4

No.	Parameter (MIDI)	Display	Value	Table	MW.FC
1	LFO Frequency	0.000~39.70Hz	0-127	disp_lfo	
2	LFO PM Depth	0~127	0-127		
3	Feedback Level	-63~+63	1-127		
4	Delay Offset	0.0~50.0ms	0-127	tb_dly50	
5					
6	*EQ Low Freq.	50~2.0kHz	8-40	disp_fc	
7	*EQ Low Gain	-12~+12dB	52-76		
8	*EQ High Freq.	500Hz~16.0kHz	28-58	disp_fc	
9	*EQ High Gain	-12~+12dB	52-76		
10					
11					
12					
13					
14					
15	*Input Mode	mono/stereo	0-1		
16					

[09] Flanger 1 ~ [11] Flanger 3

No.	Parameter (MIDI)	Display	Value	Table	MW.FC
1	LFO Frequency	0.000~39.70Hz	0-127	disp_lfo	
2	LFO Depth	0~127	0-127		
3	Feedback Level	-63~+63	1-127		
4	Delay Offset	0.0~6.3ms	0-63	tb_dly50	
5					
6	*EQ Low Freq.	50Hz~2.0kHz	8-40	disp_fc	
7	*EQ Low Gain	-12~+12dB	52-76		
8	*EQ High Freq.	500Hz~16.0kHz	28-58	disp_fc	
9	*EQ High Gain	-12~+12dB	52-76		
10					
11					
12					
13					
14	*LFO Phase Diff.	-180~+180deg(reso=3)	4-124		
15					
16					

* indicates parameters set by MIDI system exclusive messages.

• indicates parameters controllable by Modulation Wheel or Foot Controller etc. when Variation Mode = INS.

Variation Type

[00] No Effect

[01] Rev Hall 1 ~ [08] Rev Plate

No.	Parameter (MIDI)	Display	Value	Table	MW.FC
1	Reverb Time	0.3~30.0s	0-69	tb_rvt	
2	Diffusion	0~10	0-10		
3	Initial Delay	0.1~99.3ms	0-63	tb_dly200	
4	HPF Cutoff	Thru~8.0kHz	0-52	disp_fc	
5	LPF Cutoff	1.0kHz~Thru	34-60	disp_fc	
6					
7					
8					
9					
10	Wet/Dry	W<D63~W=D~W63>D	1-127		●
11	*Rev Delay	0.1~99.3ms	0-63	tb_dly200	
12	*Density	0~3	0-3		
13	*Rev/Er Balance	R<E63~R=E~R63>E	1-127		
14					
15	*Feedback Level	-63~+63	1-127		
16					

[11] Echo

No.	Parameter (MIDI)	Display	Value	Table	MW.FC
1	Lch Delay1	0.1~355.0m	1-3550		
2	Lch Feedback Level	-63~+63	1-127		
3	Rch Delay1	0.1~355.0m	1-3550		
4	Rch Feedback Level	-63~+63	1-127		
5	High Damp	0.1~1.0	1-10		
6	*Lch Delay2	0.1~360.0ms	1-3600		
7	*Rch Delay2	0.1~360.0ms	1-3600		
8	*Delay2 Level	0~127	0-127		
9					
10	Wet/Dry	W<D63~W=D~W63>D	1-127		●
11					
12					
13	*EQ Low Freq.	50Hz~2.0kHz	8-40	disp_fc	
14	*EQ Low Gain	-12~+12dB	52-76		
15	*EQ High Freq.	500Hz~16.0kHz	8-58	disp_fc	
16	*EQ High Gain	-12~+12dB	52-76		

[09] Delay L, C, R

No.	Parameter (MIDI)	Display	Value	Table	MW.FC
1	Lch Delay	0.1~715.0msec	1-7150		
2	Rch Delay	0.1~715.0msec	1-7150		
3	Cch Delay	0.1~715.0msec	1-7150		
4	Feedback Delay	0.1~715.0msec	1-7150		
5	Feedback Level	-63~+63	1-127		
6	*Cch Level	0~127	0-127		
7	*High Damp	0.1~1.0	1-10		
8					
9					
10	Wet/Dry	W<D63~W=D~W63>D	1-127		●
11					
12					
13	*EQ Low Freq.	50Hz~2.0kHz	8-40	disp_fc	
14	*EQ Low Gain	-12~+12dB	52-76		
15	*EQ High Freq.	500Hz~16.0kHz	28-58	disp_fc	
16	*EQ High Gain	-12~+12dB	52-76		

[12] CrossDelay

No.	Parameter (MIDI)	Display	Value	Table	MW.FC
1	L->R Delay	0.1~355.0m	1-3550		
2	R->L Delay	0.1~355.0m	1-3550		
3	Feedback Level	-63~+63	1-127		
4	Input Select	L,R,L&R(L,R is MonoMix)	0-2		
5	High Damp	0.1~1.0	1-10		
6					
7					
8					
9					
10	Wet/Dry	W<D63~W=D~W63>D	1-127		●
11					
12					
13	*EQ Low Freq.	50Hz~2.0kHz	8-40	disp_fc	
14	*EQ Low Gain	-12~+12dB	52-76		
15	*EQ High Freq.	500Hz~16.0kHz	8-58	disp_fc	
16	*EQ High Gain	-12~+12dB	52-76		

[10] Delay L, R

No.	Parameter (MIDI)	Display	Value	Table	MW.FC
1	Lch Delay	0.1~715.0msec	1-7150		
2	Rch Delay	0.1~715.0msec	1-7150		
3	Feedback Delay1	0.1~715.0msec	1-7150		
4	Feedback Delay2	0.1~715.0msec	1-7150		
5	Feedback Level	-63~+63	1-127		
6	*High Damp	0.1~1.0	1-10		
7					
8					
9					
10	Wet/Dry	W<D63~W=D~W63>D	1-127		●
11					
12					
13	*EQ Low Freq.	50Hz~2.0kHz	8-40	disp_fc	
14	*EQ Low Gain	-12~+12dB	52-76		
15	*EQ High Freq.	500Hz~16.0kHz	28-58	disp_fc	
16	*EQ High Gain	-12~+12dB	52-76		

[13] EarlyRef.1, [14]EarlyRef.2

No.	Parameter (MIDI)	Display	Value	Table	MW.FC
1	Type	S-H, L-H, Rdm, Rvs, Plt, Spr	0-5		
2	Room Size	0.1~7.0	0-44	tb_room	
3	Diffusion	0~10	0-10		
4	Initial Delay	0.1~200.0ms	0-127	tb_dly200	
5	Feedback Level	-63~+63	1-127		
6	*HPF Cutoff	Thru~8.0kHz	0-52	disp_fc	
7	*LPF Cutoff	1.0kHz~Thru	34-60	disp_fc	
8					
9					
10	Wet/Dry	W<D63~W=D~W63>D	1-127		●
11	*Liveness	0~10	0-10		
12	*Density	0~3	0-3		
13	*High Damp	0.1~1.0	1-10		
14					
15					
16					

* indicates parameters set by MIDI system exclusive messages.

● indicates parameters controllable by Modulation Wheel or Foot Controller etc. when Variation Mode = INS.

Effect Parameter List

[15] GateReverb, [16]ReversGate

No.	Parameter (MIDI)	Display	Value	Table	MW.FC
1	Type	TypeA,TypeB	0-1		
2	Room Size	0.1~7.0	0-44	tb_room	
3	Diffusion	0~10	0-10		
4	Initial Delay	0.1~200.0ms	0-127	tb_dly200	
5	Feedback Level	-63~+63	1-127		
6	*HPF Cutoff	Thru~8.0kHz	0-52	disp_fc	
7	*LPF Cutoff	1.0kHz~Thru	34-60	disp_fc	
8					
9					
10	Wet/Dry	W<D63-W=D-W63>D	1-127		●
11	*Liveness	0~10	0-10		
12	*Density	0~3	0-3		
13	*High Damp	0.1~1.0	1-10		
14					
15					
16					

[28] Flanger 1 ~ [30] Flanger 3

No.	Parameter (MIDI)	Display	Value	Table	MW.FC
1	LFO Frequency	0.000~39.70Hz	0-127	disp_lfo	
2	LFO Depth	0~127	0-127		
3	Feedback Level	-63~+63	1-127		
4	Delay Offset	0.0~50.0ms	0-127	tb_dly50	
5					
6	*EQ Low Freq.	50Hz~2.0kHz	8-40	disp_fc	
7	*EQ Low Gain	-12~+12dB	52-76		
8	*EQ High Freq.	500Hz~16.0kHz	28-58	disp_fc	
9	*EQ High Gain	-12~+12dB	52-76		
10	Wet/Dry	W<D63-W=D-W63>D	1-127		●
11					
12					
13					
14	*LFO Phase Diff.	-180~+180deg	4-124		
15					
16					

[17] Rev Karaoke1~[19]Rev Karaoke3

No.	Parameter (MIDI)	Display	Value	Table	MW.FC
1	Delay Time	0.1~400.0ms	0-127	tb_dly400	
2	Feedback Level	-63~+63	1-127		
3	HPF Cutoff	Thru~8.0kHz	0-52	disp_fc	
4	LPF Cutoff	1.0kHz~Thru	34-60	disp_fc	
5					
6					
7					
8					
9					
10	Wet/Dry	W<D63-W=D-W63>D	1-127		●
11					
12					
13					
14					
15					
16					

[31] Symphonic

No.	Parameter (MIDI)	Display	Value	Table	MW.FC
1	LFO Frequency	0.000~39.70Hz	0-127	disp_lfo	
2	LFO Depth	0~127	0-127		
3	Delay Offset	0.0~50.0ms	0-127	tb_dly50	
4					
5					
6	*EQ Low Freq.	50Hz~2.0kHz	8-40	disp_fc	
7	*EQ Low Gain	-12~+12dB	52-76		
8	*EQ High Freq.	500Hz~16.0kHz	28-58	disp_fc	
9	*EQ High Gain	-12~+12dB	52-76		
10	Wet/Dry	W<D63-W=D-W63>D	1-127		●
11					
12					
13					
14					
15					
16					

[20] Chorus 1~[27] Celeste 4

No.	Parameter (MIDI)	Display	Value	Table	MW.FC
1	LFO Frequency	0.000~39.70Hz	0-127	disp_lfo	
2	LFO PM Depth	0~127	0-127		
3	Feedback Level	-63~+63	1-127		
4	Delay Offset	0.0~50.0ms	0-127	tb_dly50	
5					
6	*EQ Low Freq.	50Hz~2.0kHz	8-40	disp_fc	
7	*EQ Low Gain	-12~+12dB	52-76		
8	*EQ High Freq.	500Hz~16.0kHz	28-58	disp_fc	
9	*EQ High Gain	-12~+12dB	52-76		
10	Wet/Dry	W<D63-W=D-W63>D	1-127		●
11					
12					
13					
14					
15	*Input Mode	mono/stereo	0-1		
16					

[32] Rotary Sp.

No.	Parameter (MIDI)	Display	Value	Table	MW.FC
1	LFO Frequency	0.000~39.70Hz	0-127	disp_lfo	●
2	LFO Depth	0~127	0-127		
3					
4					
5					
6	*EQ Low Freq.	50Hz~2.0kHz	8-40	disp_fc	
7	*EQ Low Gain	-12~+12dB	52-76		
8	*EQ High Freq.	500Hz~16.0kHz	28-58	disp_fc	
9	*EQ High Gain	-12~+12dB	52-76		
10	Wet/Dry	W<D63-W=D-W63>D	1-127		
11					
12					
13					
14					
15					
16					

* indicates parameters set by MIDI system exclusive messages.

● indicates parameters controllable by Modulation Wheel or Foot Controller etc. when Variation Mode = INS.

[33] Tremolo

No.	Parameter (MIDI)	Display	Value	Table	MW.FC
1	LFO Frequency	0.000-39.70Hz	0-127	disp_lfo	●
2	AM Depth	0-127	0-127		
3	PM Depth	0-127	0-127		
4					
5					
6	*EQ Low Freq.	50Hz-2.0kHz	8-40	disp_fc	
7	*EQ Low Gain	-12-+12dB	52-76		
8	*EQ High Freq.	500Hz-16.0kHz	28-58	disp_fc	
9	*EQ High Gain	-12-+12dB	52-76		
10					
11					
12					
13					
14	*LFO Phase Diff.	-180-+180deg	4-124		
15	*Input Mode	mono/stereo	0-1		
16					

[36] Phaser 2

No.	Parameter (MIDI)	Display	Value	Table	MW.FC
1	LFO Frequency	0.000-39.70Hz	0-127	disp_lfo	
2	LFO Depth	0-127	0-127		
3	Phase Shift Offset	0-127	0-127		
4	Feedback Level	-63-+63	1-127		
5					
6	*EQ Low Freq.	50Hz-2.0kHz	8-40	disp_fc	
7	*EQ Low Gain	-12-+12dB	52-76		
8	*EQ High Freq.	500Hz-16.0kHz	28-58	disp_fc	
9	*EQ High Gain	-12-+12dB	52-76		
10	Wet/Dry	W<D63-W=D-W63>D	1-127		●
11	*Stage	3-5	3-5		
12					
13	*LFO Phase Diff.	-180-+180deg(reso=3)	4-124		
14					
15					
16					

[34] Auto PAN

No.	Parameter (MIDI)	Display	Value	Table	MW.FC
1	LFO Frequency	0.000-39.70Hz	0-127	disp_lfo	●
2	L/R Depth	0-127	0-127		
3	F/R Depth	0-127	0-127		
4	PAN Direction	L<->R,L->R,L<-R,Lturn,Rturn,L/R	0-5		
5					
6	*EQ Low Freq.	50Hz-2.0kHz	8-40	disp_fc	
7	*EQ Low Gain	-12-+12dB	52-76		
8	*EQ High Freq.	500Hz-16.0kHz	28-58	disp_fc	
9	*EQ High Gain	-12-+12dB	52-76		
10					
11					
12					
13					
14					
15					
16					

[37] Distortion, [38]Overdrive

No.	Parameter (MIDI)	Display	Value	Table	MW.FC
1	Drive	0-127	0-127		●
2	EQ Low Frequency	50Hz-2.0kHz	8-40	disp_fc	
3	EQ Low Gain	-12-+12dB	52-76		
4	LPF Cutoff	1.0kHz-Thru	34-60	disp_fc	
5	Output Level	0-127	0-127		
6					
7	EQ Mid Frequency	500Hz-10.0kHz	28-54	disp_fc	
8	*EQ Mid Gain	-12-+12dB	52-76		
9	*EQ Mid Width	1.0-12.0	10-120		
10	*Wet/Dry	W<D63-W=D-W63>D	1-127		
11	Edge(Clip Curve)	0-127	0-127		
12					
13					
14					
15					
16					

[35] Phaser 1

No.	Parameter (MIDI)	Display	Value	Table	MW.FC
1	LFO Frequency	0.000-39.70Hz	0-127	disp_lfo	
2	LFO Depth	0-127	0-127		
3	Phase Shift Offset	0-127	0-127		
4	Feedback Level	-63-+63	1-127		
5					
6	*EQ Low Freq.	50Hz-2.0kHz	8-40	disp_fc	
7	*EQ Low Gain	-12-+12dB	52-76		
8	*EQ High Freq.	500Hz-16.0kHz	28-58	disp_fc	
9	*EQ High Gain	-12-+12dB	52-76		
10	Wet/Dry	W<D63-W=D-W63>D	1-127		●
11	*Stage	6,7,8,9,10	6-10		
12					
13					
14					
15					
16					

[39] G-Amp.Sim

No.	Parameter (MIDI)	Display	Value	Table	MW.FC
1	Drive	0-127	0-127		●
2	AMP Type	Off,Stack,Combo,Tube	0-3		
3	LPF Cutoff	1.0kHz-Thru	34-60	disp_fc	
4	Output Level	0-127	0-127		
5					
6					
7					
8					
9					
10	Wet/Dry	W<D63-W=D-W63>D	1-127		
11	*Edge(Clip Curve)	0-127	0-127		
12					
13					
14					
15					
16					

* indicates parameters set by MIDI system exclusive messages.

● indicates parameters controllable by Modulation Wheel or Foot Controller etc. when Variation Mode = INS.

Effect Parameter List

[40] 3 Band EQ

No.	Parameter (MIDI)	Display	Value	Table	MW.FC
1	EQ Low Gain	-12~+12dB	52-76		
2	EQ Mid Frequency	500Hz~10.0kHz	28-54	disp_fc	
3	EQ Mid Gain	-12~+12dB	52-76		
4	EQ Mid Width	1.0~12.0	10-120		
5	EQ High Gain	-12~+12dB	52-76		
6	*EQ Low Freq.	50Hz~2.0kHz	8-40	disp_fc	
7	*EQ High Freq.	500Hz~16.0kHz	28-58	disp_fc	
8					
9					
10					
11					
12					
13					
14					
15					
16					

[43] THRU Signal is passed without modification.

[41] 2 Band EQ

No.	Parameter (MIDI)	Display	Value	Table	MW.FC
1	EQ Low Frequency	50Hz~2.0kHz	8-40	disp_fc	
2	EQ Low Gain	-12~+12dB	52-76		
3	EQ High Frequency	500Hz~16.0kHz	28-58	disp_fc	
4	EQ High Gain	-12~+12dB	52-76		
5					
6					
7					
8					
9					
10					
11					
12					
13					
14					
15					
16					

[42] Auto Wah

No.	Parameter (MIDI)	Display	Value	Table	MW.FC
1	LFO Frequency	0.000~39.70Hz	0-127	disp_lfo	
2	LFO Depth	0~127	0-127		
3	Cutoff FrequencyOffset	50Hz~14.0kHz	0-127	tb_wah_fq	●
4	Resonance	1.0~12.0	10-120		
5					
6	*EQ Low Freq.	50Hz~2.0kHz	8-40	disp_fc	
7	*EQ Low Gain	-12~+12dB	52-76		
8	*EQ High Freq.	500Hz~16.0kHz	28-58	disp_fc	
9	*EQ High Gain	-12~+12dB	52-76		
10	Wet/Dry	W<D63~W=D~W63>D	1-127		
11					
12					
13					
14					
15					
16					

* indicates parameters set by MIDI system exclusive messages.

● indicates parameters controllable by Modulation Wheel or Foot Controller etc. when Variation Mode = INS.

tb_rvt

reverb time table [s]

Data	Value	Data	Value	Data	Value
0	0.3	32	3.5	64	17.0
1	0.4	33	3.6	65	18.0
2	0.5	34	3.7	66	19.0
3	0.6	35	3.8	67	20.0
4	0.7	36	3.9	68	25.0
5	0.8	37	4.0	37	30.0
6	0.9	38	4.1		
7	1.0	39	4.2		
8	1.1	40	4.3		
9	1.2	41	4.4		
10	1.3	42	4.5		
11	1.4	43	4.6		
12	1.5	44	4.7		
13	1.6	45	4.8		
14	1.7	46	4.9		
15	1.8	47	5.0		
16	1.9	48	5.5		
17	2.0	49	6.0		
18	2.1	50	6.5		
19	2.2	51	7.0		
20	2.3	52	7.5		
21	2.4	53	8.0		
22	2.5	54	8.5		
23	2.6	55	9.0		
24	2.7	56	9.5		
25	2.8	57	10.0		
26	2.9	58	11.0		
27	3.0	59	12.0		
28	3.1	60	13.0		
29	3.2	61	14.0		
30	3.3	62	15.0		
31	3.4	63	16.0		

tb_dly200

delay time table [$\times 0.1\text{ms}$] (MAX200.0ms)

Data	Value	Data	Value	Data	Value	Data	Value
0	01	32	505	64	1008	96	1512
1	17	33	520	65	1024	97	1528
2	32	34	536	66	1040	98	1544
3	48	35	552	67	1056	99	1559
4	64	36	568	68	1071	100	1575
5	80	37	583	69	1087	101	1591
6	95	38	599	70	1103	102	1606
7	111	39	615	71	1119	103	1622
8	127	40	631	72	1134	104	1638
9	143	41	646	73	1150	105	1654
10	158	42	662	74	1166	106	1669
11	174	43	678	75	1182	107	1685
12	190	44	694	76	1197	108	1701
13	206	45	709	77	1213	109	1717
14	221	46	725	78	1229	110	1732
15	237	47	741	79	1244	111	1748
16	253	48	757	80	1260	112	1764
17	269	49	772	81	1276	113	1780
18	284	50	788	82	1292	114	1795
19	300	51	804	83	1307	115	1811
20	316	52	819	84	1323	116	1827
21	332	53	835	85	1339	117	1843
22	347	54	851	86	1355	118	1858
23	363	55	867	87	1370	119	1874
24	379	56	882	88	1386	120	1890
25	395	57	898	89	1402	121	1906
26	410	58	914	90	1418	122	1921
27	426	59	930	91	1433	123	1937
28	442	60	945	92	1449	124	1953
29	457	61	961	93	1465	125	1969
30	473	62	977	94	1481	126	1984
31	489	63	993	95	1496	127	2000

tb_dly400

delay time table [$\times 0.1\text{ms}$] (MAX400.0ms)

Data	Value	Data	Value	Data	Value	Data	Value
0	1	32	1009	64	2016	96	3024
1	32	33	1040	65	2048	97	3055
2	64	34	1072	66	2079	98	3087
3	95	35	1103	67	2111	99	3118
4	127	36	1135	68	2142	100	3150
5	158	37	1166	69	2174	101	3181
6	190	38	1198	70	2205	102	3213
7	221	39	1229	71	2237	103	3244
8	253	40	1261	72	2268	104	3276
9	284	41	1292	73	2300	105	3307
10	316	42	1324	74	2331	106	3339
11	347	43	1355	75	2363	107	3370
12	379	44	1386	76	2394	108	3402
13	410	45	1418	77	2426	109	3433
14	442	46	1449	78	2457	110	3465
15	473	47	1481	79	2489	111	3496
16	505	48	1512	80	2520	112	3528
17	536	49	1544	81	2552	113	3559
18	568	50	1575	82	2583	114	3591
19	599	51	1607	83	2615	115	3622
20	631	52	1638	84	2646	116	3654
21	662	53	1670	85	2677	117	3685
22	694	54	1701	86	2709	118	3717
23	725	55	1733	87	2740	119	3748
24	757	56	1764	88	2772	120	3780
25	788	57	1796	89	2803	121	3811
26	820	58	1827	90	2835	122	3843
27	851	59	1859	91	2866	123	3874
28	883	60	1890	92	2898	124	3906
29	914	61	1922	93	2929	125	3937
30	946	62	1953	94	2961	126	3969
31	977	63	1985	95	2992	127	4000

tb_dly50

delay time table [$\times 0.1\text{ms}$] (MAX50.0ms)

Data	Value	Data	Value	Data	Value	Data	Value
0	0	32	32	64	64	96	96
1	1	33	33	65	65	97	97
2	2	34	34	66	66	98	98
3	3	35	35	67	67	99	99
4	4	36	36	68	68	100	100
5	5	37	37	69	69	101	111
6	6	38	38	70	70	102	122
7	7	39	39	71	71	103	133
8	8	40	40	72	72	104	144
9	9	41	41	73	73	105	155
10	10	42	42	74	74	106	171
11	11	43	43	75	75	107	186
12	12	44	44	76	76	108	202
13	13	45	45	77	77	109	218
14	14	46	46	78	78	110	233
15	15	47	47	79	79	111	249
16	16	48	48	80	80	112	265
17	17	49	49	81	81	113	280
18	18	50	50	82	82	114	296
19	19	51	51	83	83	115	312
20	20	52	52	84	84	116	328
21	21	53	53	85	85	117	343
22	22	54	54	86	86	118	359
23	23	55	55	87	87	119	375
24	24	56	56	88	88	120	390
25	25	57	57	89	89	121	406
26	26	58	58	90	90	122	422
27	27	59	59	91	91	123	437
28	28	60	60	92	92	124	453
29	29	61	61	93	93	125	469
30	30	62	62	94	94	126	484
31	31	63	63	95	95	127	500

Data/Value Correspondence Tables

disp_fc

cutoff freq. table for filter [Hz]

Data	Value	Data	Value
0	20	32	800
1	22	33	900
2	25	34	1.0k
3	28	35	1.1k
4	32	36	1.2k
5	36	37	1.4k
6	40	38	1.6k
7	45	39	1.8k
8	50	40	2.0k
9	56	41	2.2k
10	63	42	2.5k
11	70	43	2.8k
12	80	44	3.2k
13	90	45	3.6k
14	100	46	4.0k
15	110	47	4.5k
16	125	48	5.0k
17	140	49	5.6k
18	160	50	6.3k
19	180	51	7.0k
20	200	52	8.0k
21	225	53	9.0k
22	250	54	10.0k
23	280	55	11.0k
24	315	56	12.0k
25	355	57	14.0k
26	400	58	16.0k
27	450	59	18.0k
28	500	60	20.0k
29	560		
30	630		
31	700		

tb_room

room size table

Data	Value	Data	Value
0	1	32	51
1	3	33	53
2	4	34	54
3	6	35	56
4	7	36	57
5	9	37	59
6	10	38	61
7	12	39	62
8	14	40	64
9	15	41	65
10	17	42	67
11	18	43	68
12	20	44	70
13	21		
14	23		
15	25		
16	26		
17	28		
18	29		
19	31		
20	32		
21	34		
22	35		
23	37		
24	39		
25	40		
26	42		
27	43		
28	45		
29	46		
30	48		
31	50		

disp_lfo

LFO freq. table [Hz]

Data	Value	Data	Value	Data	Value	Data	Value
0	0.000	32	1.346	64	2.692	96	8.411
1	0.042	33	1.388	65	2.776	97	8.748
2	0.084	34	1.430	66	2.860	98	9.084
3	0.126	35	1.472	67	2.944	99	9.421
4	0.168	36	1.514	68	3.028	100	9.757
5	0.210	37	1.556	69	3.112	101	10.09
6	0.252	38	1.598	70	3.196	102	10.77
7	0.294	39	1.640	71	3.280	103	11.44
8	0.336	40	1.682	72	3.365	104	12.11
9	0.379	41	1.724	73	3.449	105	12.79
10	0.421	42	1.766	74	3.533	106	13.46
11	0.463	43	1.808	75	3.617	107	14.13
12	0.505	44	1.851	76	3.701	108	14.80
13	0.547	45	1.893	77	3.786	109	15.48
14	0.589	46	1.935	78	3.870	110	16.15
15	0.631	47	1.977	79	3.954	111	16.82
16	0.673	48	2.019	80	4.038	112	17.50
17	0.715	49	2.061	81	4.122	113	18.17
18	0.757	50	2.103	82	4.206	114	18.84
19	0.799	51	2.145	83	4.290	115	19.51
20	0.841	52	2.187	84	4.374	116	20.18
21	0.883	53	2.229	85	4.458	117	20.85
22	0.925	54	2.271	86	4.542	118	21.52
23	0.967	55	2.313	87	4.626	119	22.19
24	1.009	56	2.355	88	4.710	120	22.86
25	1.051	57	2.397	89	4.794	121	23.53
26	1.093	58	2.439	90	4.878	122	24.20
27	1.136	59	2.481	91	4.962	123	24.87
28	1.178	60	2.523	92	5.046	124	25.54
29	1.220	61	2.565	93	5.130	125	26.21
30	1.262	62	2.608	94	5.214	126	26.88
31	1.304	63	2.650	95	5.298	127	27.55

tb_Wah_fq

Wah Cutoff Freq. table [Hz]

Data	Value	Data	Value	Data	Value	Data	Value
0	50	32	500	64	2.14k	96	6.20k
1	55	33	530	65	2.22k	97	6.38k
2	60	34	560	66	2.31k	98	6.56k
3	66	35	590	67	2.40k	99	6.75k
4	72	36	620	68	2.49k	100	6.95k
5	80	37	650	69	2.58k	101	7.15k
6	86	38	680	70	2.67k	102	7.35k
7	94	39	720	71	2.77k	103	7.56k
8	100	40	760	72	2.87k	104	7.78k
9	110	41	800	73	2.97k	105	8.00k
10	120	42	840	74	3.08k	106	8.22k
11	130	43	880	75	3.19k	107	8.44k
12	140	44	920	76	3.30k	108	8.67k
13	150	45	960	77	3.41k	109	8.90k
14	162	46	1.00k	78	3.53k	110	9.14k
15	174	47	1.05k	79	3.65k	111	9.38k
16	186	48	1.10k	80	3.77k	112	9.63k
17	200	49	1.15k	81	3.90k	113	9.90k
18	215	50	1.20k	82	4.03k	114	10.2k
19	230	51	1.26k	83	4.16k	115	10.4k
20	245	52	1.32k	84	4.29k	116	10.7k
21	260	53	1.38k	85	4.43k	117	10.9k
22	280	54	1.43k	86	4.57k	118	11.2k
23	300	55	1.50k	87	4.72k	119	11.5k
24	315	56	1.56k	88	4.87k	120	11.8k
25	335	57	1.62k	89	5.02k	121	12.1k
26	355	58	1.69k	90	5.18k	122	12.4k
27	380	59	1.76k	91	5.34k	123	12.7k
28	400	60	1.83k	92	5.50k	124	13.0k
29	425	61	1.90k	93	5.67k	125	13.3k
30	450	62	1.98k	94	5.84k	126	13.7k
31	475	63	2.06k	95	6.02k	127	14.0k

Phrase List (Drum-b:General)

16beat Drum -b(General)	
Phrase No.	Phrase Name
Db16001	GE 4onFlor 1
Db16002	GE 4onFlor 2
Db16003	GE 4onFlor 3
Db16004	GE 4onFlor 4
Db16005	GE 4onFlor 5
Db16006	GE 4onFlor 6
Db16007	GE 4onFlor 7
Db16008	GE 4onFlor 8
Db16009	GE 4onFlor 9
Db16010	GE 4onFlo 10
Db16011	GE 4onFlo 11
Db16012	GE 4onFlo 12
Db16013	GE 4onFlo 13
Db16014	GE 4onFlo 14
Db16015	GE 4onFlo 15
Db16016	GE 4onFlo 16
Db16017	GE 4onFlo 17
Db16018	GE 4onFlo 18
Db16019	GE 4onFlo 19
Db16020	GE 4onFlo 20
Db16021	GE 4onFlo 21
Db16022	GE 4onFlo 22
Db16023	GE 4onFlo 23
Db16024	GE 4onFlo 24
Db16025	GE Ballade 1
Db16026	GE Ballade 2
Db16027	GE Ballade 3
Db16028	GE BalldeG 1
Db16029	GE BalldeG 2
Db16030	GE BalldeG 3
Db16031	GE BalldeG 4
Db16032	GE BalldeG 5
Db16033	GE Ballot 1
Db16034	GE Ballot 2
Db16035	GE Ballot 3
Db16036	GE Ballot 4
Db16037	GE Boy 1
Db16038	GE Boy 2
Db16039	GE Boy 3
Db16040	GE Boy 4
Db16041	GE Bread 1
Db16042	GE Bread 2
Db16043	GE Bread 3
Db16044	GE Bread 4
Db16045	GE Bread 5
Db16046	GE Bread 6
Db16047	GE Bread 7
Db16048	GE Bread 8
Db16049	GE Bread 9
Db16050	GE Bread 10
Db16051	GE Bread 11
Db16052	GE Bread 12
Db16053	GE Bread 13
Db16054	GE Butter 1
Db16055	GE Butter 2
Db16056	GE Butter 3
Db16057	GE Butter 4
Db16058	GE Butter 5
Db16059	GE Hustlin 1
Db16060	GE Hustlin 2
Db16061	GE Primer 1
Db16062	GE Primer 2
Db16063	GE Primer 3
Db16064	GE Primer 4
Db16065	GE Primer 5
Db16066	GE Primer 6
Db16067	GE Primer 7
Db16068	GE Pushed 1
Db16069	GE Pushed 2
Db16070	GE Shtuff 1
Db16071	GE Shtuff 2
Db16072	GE Vanilla 1
Db16073	GE Vanilla 2
Db16074	GE Vanilla 3

8beat Drum -b(General)			
Phrase No.	Phrase Name	Phrase No.	Phrase Name
Db08001	GE 4onFlor 1	Db08009	GE Shuffle 4
Db08002	GE 4onFlor 2	Db08091	GE Shuffle 5
Db08003	GE 4onFlor 3	Db08092	GE Shuffle 6
Db08004	GE 4onFlor 4	Db08093	GE Shuffle 7
Db08005	GE 4onFlor 5	Db08094	GE Shuffle 8
Db08006	GE 4onFlor 6	Db08095	GE Shuffle 9
Db08007	GE 4onFlor 7	Db08096	GE Shuflin 1
Db08008	GE 4onFlor 8	Db08097	GE Shuflin 2
Db08009	GE 4onFlo 9	Db08098	GE Shuflin 3
Db08010	GE 4onFlo 10	Db08099	GE Shuflin 4
Db08011	GE 4onFlo 11	Db08100	GE Shuflin 5
Db08012	GE 4onFlo 12	Db08101	GE Shuflin 6
Db08013	GE 4onFlo 13		
Db08014	GE 4onFlo 14		
Db08015	GE 4onFlo 15		
Db08016	GE 4onFlo 16		
Db08017	GE 68Shufl 1		
Db08018	GE 68Shufl 2		
Db08019	GE Ballad 1		
Db08020	GE Ballad 2		
Db08021	GE Ballad 3		
Db08022	GE Ballad 4		
Db08023	GE Ballad 5		
Db08024	GE Ballad 6		
Db08025	GE Ballad 7		
Db08026	GE Ballad 8		
Db08027	GE Ballad 9		
Db08028	GE Ballad 10		
Db08029	GE Ballad 11		
Db08030	GE Ballad 12		
Db08031	GE Ballade 1		
Db08032	GE Ballade 2		
Db08033	GE Ballade 3		
Db08034	GE Ballade 4		
Db08035	GE Ballade 5		
Db08036	GE Ballade 6		
Db08037	GE Ballade 7		
Db08038	GE Ballade 8		
Db08039	GE Ballade 9		
Db08040	GE Ballde 10		
Db08041	GE Ballde 11		
Db08042	GE Ballde 12		
Db08043	GE Ballde 13		
Db08044	GE BalladG 1		
Db08045	GE BalladG 2		
Db08046	GE BalladP 1		
Db08047	GE BalladP 2		
Db08048	GE BalladP 3		
Db08049	GE BalladP 4		
Db08050	GE BalldeP 1		
Db08051	GE BalldeP 2		
Db08052	GE BalldeP 3		
Db08053	GE BalldeP 4		
Db08054	GE BalldeP 5		
Db08055	GE BalldeP 6		
Db08056	GE BalldeP 7		
Db08057	GE BalldeP 8		
Db08058	GE Ballot 1		
Db08059	GE Ballot 2		
Db08060	GE Ballot 3		
Db08061	GE Bumpin' 1		
Db08062	GE Bumpin' 2		
Db08063	GE Bumpin' 3		
Db08064	GE Bumpin' 4		
Db08065	GE Bumpin' 5		
Db08066	GE Bumpin' 6		
Db08067	GE Bumpin' 7		
Db08068	GE Butter 1		
Db08069	GE Butter 2		
Db08070	GE Butter 3		
Db08071	GE Butter 4		
Db08072	GE Butter 5		
Db08073	GE Freddy 1		
Db08074	GE Freddy 2		
Db08075	GE Free 1		
Db08076	GE Free 2		
Db08077	GE Free 3		
Db08078	GE Light 2		
Db08079	GE Light 3		
Db08080	GE Lighter 1		
Db08081	GE Lighter 2		
Db08082	GE Lighter 3		
Db08083	GE Lighter 4		
Db08084	GE Pushed		
Db08085	GE Shtuff 1		
Db08086	GE Shtuff 2		
Db08087	GE Shuffle 1		
Db08088	GE Shuffle 2		
Db08089	GE Shuffle 3		

3/4beat Drum -b(General)		
Phrase No.	Phrase Name	
Db34001	GE Ballad	1
Db34002	GE Ballad	2
Db34003	GE Pop	1
Db34004	GE Pop	2
Db34005	GE Pop	3
Db34006	GE Pop	4
Db34007	GE Pop	5
Db34008	GE Pop	6
Db34009	GE Pop	7
Db34010	GE Pop	8
Db34011	GE Pop	9
Db34012	GE Pop	10
Db34013	GE Pop	11
Db34014	GE Pop	12
Db34015	GE Swaltz	1
Db34016	GE Swaltz	2
Db34017	GE Swaltz	3

Phrase List (Drum Fill-a:Pop&Rock)

16beat Drum Fill-a (Pop&Rock)			
Phrase No.	Phrase Name	Phrase No.	Phrase Name
Fa16001	DA Come On	Fa16077	RO Rocker 6
Fa16002	DA DisFunk 1	Fa16078	RO Rocker 7
Fa16003	DA DisFunk 2	Fa16079	RO Rocker 8
Fa16004	DA DisFunk 3	Fa16080	RO Rockin' 1
Fa16005	DA DisFunk 4	Fa16081	RO Rockin' 2
Fa16006	DA DisFunk 5	Fa16082	RO Rockin' 3
Fa16007	DA DisFunk 6	Fa16083	RO Rockin' 4
Fa16008	DA DisFunk 7	Fa16084	RO Rockin' 5
Fa16009	DA DisFunk 8	Fa16085	RO Rockin' 6
Fa16010	DA EuroBt. 1	Fa16086	RO Rosanna
Fa16011	DA EuroBt. 2	Fa16087	CW Memphis 1
Fa16012	DA EuroBt. 3	Fa16088	CW Memphis 2
Fa16013	DA EuroBt. 4	Fa16089	CW Memphis 3
Fa16014	DA EuroBt. 5	Fa16090	CW Memphis 4
Fa16015	DA EuroBt. 6	Fa16091	CW Memphis 5
Fa16016	DA EuroBt. 7	Fa16092	CW Memphis 6
Fa16017	DA EuroBt. 8		
Fa16018	DA Ground 1		
Fa16019	DA Ground 2		
Fa16020	DA Ground 3		
Fa16021	DA Ground 4		
Fa16022	DA Hip 1		
Fa16023	DA Hip 2		
Fa16024	DA Hop 1		
Fa16025	DA Hop 2		
Fa16026	DA Hop 3		
Fa16027	DA Hop 4		
Fa16028	DA Jungle 1		
Fa16029	DA Jungle 2		
Fa16030	DA Jungle 3		
Fa16031	DA Jungle 4		
Fa16032	DA Jungle 5		
Fa16033	DA Rap 1		
Fa16034	DA Rap 2		
Fa16035	DA Rap 3		
Fa16036	DA Rap 4		
Fa16037	DA Rap 5		
Fa16038	DA Rap 6		
Fa16039	DA Rave 1		
Fa16040	DA Rave 2		
Fa16041	DA Rave 3		
Fa16042	DA Rave 4		
Fa16043	DA Rave 5		
Fa16044	DA ShuFill 1		
Fa16045	DA ShuFill 2		
Fa16046	DA ShuFill 3		
Fa16047	DA ShuFill 4		
Fa16048	DA ShuFill 5		
Fa16049	DA ShuFi 6		
Fa16050	DA Tekno		
Fa16051	PO Ethno 1		
Fa16052	PO Ethno 2		
Fa16053	PO Killer 1		
Fa16054	PO Killer 2		
Fa16055	PO Playbak		
Fa16056	PO Prayer 1		
Fa16057	PO Prayer 2		
Fa16058	PO Prayer 3		
Fa16059	PO Prayer 4		
Fa16060	PO Value 1		
Fa16061	PO Water		
Fa16062	RO Dirge 1		
Fa16063	RO Dirge 2		
Fa16064	RO Dirge 3		
Fa16065	RO Dirge 4		
Fa16066	RO Hotel 1		
Fa16067	RO Hotel 2		
Fa16068	RO Hotel 3		
Fa16069	RO Metal 1		
Fa16070	RO Metal 2		
Fa16071	RO Metal 3		
Fa16072	RO Rocker 1		
Fa16073	RO Rocker 2		
Fa16074	RO Rocker 3		
Fa16075	RO Rocker 4		
Fa16076	RO Rocker 5		

8beat Drum Fill-a(Pop&Rock)					
Phrase No.	Phrase Name	Phrase No.	Phrase Name	Phrase No.	Phrase Name
Fa08001	DA Dig Ya! 1	Fa08078	PO Tense 2	Fa08153	RO R&R 13
Fa08002	DA Dig Ya! 2	Fa08079	PO Truckin 1	Fa08154	RO Rockaby 1
Fa08003	DA Dig Ya! 3	Fa08080	PO Truckin 2	Fa08155	RO Rockaby 2
Fa08004	PO Cherry	Fa08081	PO Truckin 3	Fa08156	RO Rockaby 3
Fa08005	PO Ethno	Fa08082	PO Truckin 4	Fa08157	RO Rockaby 4
Fa08006	PO Feel 1	Fa08083	PO Truckin 5	Fa08158	RO Rockaby 5
Fa08007	PO Feel 2	Fa08084	PO Vision 1	Fa08159	RO Rockaby 6
Fa08008	PO Feel 3	Fa08085	PO Vision 2	Fa08160	RO Rockaby 7
Fa08009	PO Fly	Fa08086	RO 2ZTop 1	Fa08161	RO Rockaby 8
Fa08010	PO Gated 1	Fa08087	RO 2ZTop 2	Fa08162	RO Rockaby 9
Fa08011	PO Gated 2	Fa08088	RO 2ZTop 3	Fa08163	RO Rockby 10
Fa08012	PO Gated 3	Fa08089	RO 2ZTop 4	Fa08164	RO Rocker
Fa08013	PO Gated 4	Fa08090	RO 2ZTop 5	Fa08165	RO Rockin' 1
Fa08014	PO Gated 5	Fa08091	RO 2ZTop 6	Fa08166	RO Rockin' 2
Fa08015	PO Gated 6	Fa08092	RO 2ZTop 7	Fa08167	RO Rockin' 3
Fa08016	PO Gated 7	Fa08093	RO 2ZTop 8	Fa08168	RO Rockin' 4
Fa08017	PO Gated 8	Fa08094	RO 2ZTop 9	Fa08169	RO Rockin' 5
Fa08018	PO Gated 9	Fa08095	RO Anthem	Fa08170	RO Rockin' 6
Fa08019	PO Hustler 1	Fa08096	RO Baby	Fa08171	RO Rockin' 7
Fa08020	PO Hustler 2	Fa08097	RO Boogie 1	Fa08172	RO Rockin' 8
Fa08021	PO Hustler 3	Fa08098	RO Boogie 2	Fa08173	RO Roll 1
Fa08022	PO Hustler 4	Fa08099	RO Boogie 3	Fa08174	RO Roll 2
Fa08023	PO Hustler 5	Fa08100	RO Boogie 4	Fa08175	RO Roll 3
Fa08024	PO Hustler 6	Fa08101	RO Boogie 5	Fa08176	RO Sharon 1
Fa08025	PO Hustler 7	Fa08102	RO Boogie 6	Fa08177	RO Sharon 2
Fa08026	PO Hustler 8	Fa08103	RO Boogie 7	Fa08178	RO Surfin' 1
Fa08027	PO Hustler 9	Fa08104	RO Boogie 8	Fa08179	RO Surfin' 2
Fa08028	PO Hustler10	Fa08105	RO Boogie 9	Fa08180	RO Surfin' 3
Fa08029	PO LookFor 1	Fa08106	RO Boogie 10	Fa08181	RO Surfin' 4
Fa08030	PO LookFor 2	Fa08107	RO Boogie 11	Fa08182	RO Surfin' 5
Fa08031	PO LookFor 3	Fa08108	RO Boogie 12	Fa08183	RO Surfin' 6
Fa08032	PO LookFor 4	Fa08109	RO Boogie 13	Fa08184	RO Surfin' 7
Fa08033	PO Love 1	Fa08110	RO Hard 1	Fa08185	RO Surfin' 8
Fa08034	PO Love 2	Fa08111	RO Hard 2	Fa08186	RO Strait 1
Fa08035	PO Love 3	Fa08112	RO Hard 3	Fa08187	RO Strait 2
Fa08036	PO Love 4	Fa08113	RO Hard 4	Fa08188	RO Strait 3
Fa08037	PO Love 5	Fa08114	RO Hard 5	Fa08189	RO Strait 4
Fa08038	PO Love 6	Fa08115	RO Hard 6	Fa08190	RO Strait 5
Fa08039	PO Love 7	Fa08116	RO Harder 1	Fa08191	RO Strait 6
Fa08040	PO Lovin' 1	Fa08117	RO Harder 2	Fa08192	RO Strait 7
Fa08041	PO Lovin' 2	Fa08118	RO Harder 3	Fa08193	RO Strait 8
Fa08042	PO Lovin' 3	Fa08119	RO Harder 4	Fa08194	RO Strait 9
Fa08043	PO Lovin' 4	Fa08120	RO Harder 5	Fa08195	RO Strait 10
Fa08044	PO Mine 1	Fa08121	RO Harder 6	Fa08196	RO Strait 11
Fa08045	PO Mine 2	Fa08055	PO Push 1	Fa08197	RO Strait 12
Fa08046	PO Mine 3	Fa08122	RO Harder 7	Fa08198	RO Strait 13
Fa08047	PO Motel 1	Fa08123	RO Harder 8	Fa08199	RO Strait 14
Fa08048	PO Motel 2	Fa08124	RO Harder 9	Fa08200	RO Strait 15
Fa08049	PO Motel 3	Fa08125	RO Harder 10	Fa08201	RO Strait 16
Fa08050	PO Night	Fa08126	RO Harder 11	Fa08202	RO Strait 17
Fa08051	PO Place 1	Fa08127	RO Hardest 1	Fa08203	RO Strait 18
Fa08052	PO Place 2	Fa08128	RO Hardest 2	Fa08204	RO Strobly 1
Fa08053	PO Pressur 1	Fa08129	RO Hardest 3	Fa08205	RO Strobly 2
Fa08054	PO Pressur 2	Fa08130	RO Hardest 4	Fa08206	RO Strobly 3
Fa08056	PO Push 2	Fa08131	RO Hardest 5	Fa08207	RO Strobly 4
Fa08057	PO Push 3	Fa08132	RO Hardest 6	Fa08208	RO Strobly 5
Fa08058	PO Push 4	Fa08133	RO Hardest 7	Fa08209	CW Ballad 1
Fa08059	PO Push 5	Fa08134	RO Heavy 1	Fa08210	CW Ballad 2
Fa08060	PO Push 6	Fa08135	RO Heavy 2	Fa08211	CW Ballad 3
Fa08061	PO Push 7	Fa08136	RO Heavy 3	Fa08212	CW Nash 1
Fa08062	PO Push 8	Fa08137	RO Heavy 4	Fa08213	CW Nash 2
Fa08063	PO Push 9	Fa08138	RO Hotel	Fa08214	CW Nash 3
Fa08064	PO Push 10	Fa08139	RO Jammin' 1	Fa08215	CW Nash 4
Fa08065	PO Push 11	Fa08140	RO Jammin' 2	Fa08216	CW Nash 5
Fa08066	PO Shuvlin 1	Fa08141	RO R&R 1	Fa08217	CW Nash 6
Fa08067	PO Shuvlin 2	Fa08142	RO R&R 2	Fa08218	CW Nash 7
Fa08068	PO Soupy 1	Fa08143	RO R&R 3	Fa08219	CW Nash 8
Fa08069	PO Soupy 2	Fa08144	RO R&R 4	Fa08220	CW Nash 9
Fa08070	PO Shwing	Fa08145	RO R&R 5	Fa08221	CW Nash 10
Fa08071	PO GiveUp! 1	Fa08146	RO R&R 6	Fa08222	CW Nash 11
Fa08072	PO GiveUp! 2	Fa08147	RO R&R 7		
Fa08073	PO GiveUp! 3	Fa08148	RO R&R 8		
Fa08074	PO GiveUp! 4	Fa08149	RO R&R 9		
Fa08075	PO GiveUp! 5	Fa08150	RO R&R 10		
Fa08076	PO GiveUp! 6	Fa08151	RO R&R 11		
Fa08077	PO Tense 1	Fa08152	RO R&R 12		

3/4beat Drum Fill-a (Pop&Rock)	
Phrase No.	Phrase Name
Fa34001	RO Ballad 1
Fa34002	RO Ballad 2
Fa34003	RO Ballad 3
Fa34004	RO Ballad 4
Fa34005	RO Ballad 5
Fa34006	RO Ballad 6
Fa34007	RO Ballad 7
Fa34008	RO Ballad 8
Fa34009	RO Ballad 9
Fa34010	CW Tenasee 1
Fa34011	CW Tenasee 2
Fa34012	CW Tenasee 3

Phrase List (Drum Fill-b:Specific)

16beat Drum Fill-b(Specific)			
Phrase No.	Phrase Name	Phrase No.	Phrase Name
Fb16001	RB Esteem 1	Fb16077	LA Espagno 4
Fb16002	RB Esteem 2	Fb16078	LA Merengu 1
Fb16003	RB Esteem 3	Fb16079	LA Merengu 2
Fb16004	RB Esteem 4	Fb16080	LA Merengu 3
Fb16005	RB Funkie	Fb16081	LA Merengu 4
Fb16006	RB Funkier 1	Fb16082	LA Samba 1
Fb16007	RB Funkier 2	Fb16083	LA Samba 2
Fb16008	RB Funkier 3	Fb16084	LA Samba 3
Fb16009	RB Funkier 4	Fb16085	LA Samba 4
Fb16010	RB Funkier 5	Fb16086	LA Samba 5
Fb16011	RB Funkier 6	Fb16087	LA Samba 6
Fb16012	RB Funkyst 1	Fb16088	LA Samba 7
Fb16013	RB Funkyst 2	Fb16089	LA Samba 8
Fb16014	RB Funkyst 3	Fb16090	LA Samba 9
Fb16015	RB FunkBay 1	Fb16091	LA Samba 10
Fb16016	RB FunkBay 2	Fb16092	LA SambaPp 1
Fb16017	RB FunkBay 3	Fb16093	LA SambaPp 2
Fb16018	RB FunkBay 4	Fb16094	LA SambaPp 3
Fb16019	RB FunkBay 5	Fb16095	LA Soca 1
Fb16020	RB FunkBay 6	Fb16096	LA Soca 2
Fb16021	RB FunkBay 7	Fb16097	LA Soca 3
Fb16022	RB FunkBay 8	Fb16098	LA Soca 4
Fb16023	RB NAWlins 1	Fb16099	LA Tejano 1
Fb16024	RB NAWlins 2	Fb16100	LA Tejano 2
Fb16025	RB NAWlins 3	Fb16101	LA Tejano 3
Fb16026	RB NAWlins 4	Fb16102	LA Tejano 4
Fb16027	RB SlowJam 1	Fb16103	WO Hi-Life 1
Fb16028	RB SlowJam 2	Fb16104	WO Hi-Life 2
Fb16029	RB SlowJam 3	Fb16105	WO Hi-Life 3
Fb16030	RB SlowJam 4	Fb16106	WO Hi-Life 4
Fb16031	RB SlowJam 5	Fb16107	WO Mozambq 1
Fb16032	RB SlowJam 6	Fb16108	WO Mozambq 2
Fb16033	RB SlowJam 7	Fb16109	WO Mozambq 3
Fb16034	RB SlowJam 8	Fb16110	WO Mozambq 4
Fb16035	RB SlowJam 9	Fb16111	WO Reggae 1
Fb16036	RB SloJam 10	Fb16112	WO Reggae 2
Fb16037	RB SloJam 11	Fb16113	WO Reggae 3
Fb16038	RB Soulful 1	Fb16114	WO Reggae 4
Fb16039	RB Soulful 2	Fb16115	WO Reggae 5
Fb16040	RB Soulful 3	Fb16116	WO Reggae 6
Fb16041	RB Soulful 4	Fb16117	WO Reggae 7
Fb16042	RB Soulful 5	Fb16118	WO Reggae 8
Fb16043	RB Soulful 6	Fb16119	WO Reggae 9
Fb16044	RB UpGospl 1	Fb16120	WO Soweto 1
Fb16045	RB UpGospl 2	Fb16121	WO Soweto 2
Fb16046	RB UpGospl 3	Fb16122	WO Soweto 3
Fb16047	RB UpGospl 4	Fb16123	WO Zydeco 1
Fb16048	RB UpGospl 5	Fb16124	WO Zydeco 2
Fb16049	RB UpGospl 6	Fb16125	WO Zydeco 3
Fb16050	JA AfroJaz 1	Fb16126	WO Zydeco 4
Fb16051	JA AfroJaz 2		
Fb16052	JA AfroJaz 3		
Fb16053	JA Fission 1		
Fb16054	JA Fission 2		
Fb16055	JA Fission 3		
Fb16056	JA Fission 4		
Fb16057	JA JazFunk 1		
Fb16058	JA JazFunk 2		
Fb16059	JA JazFunk 3		
Fb16060	JA JazFunk 4		
Fb16061	LA Calient 1		
Fb16062	LA Calient 2		
Fb16063	LA Calient 3		
Fb16064	LA Calient 4		
Fb16065	LA Calypso 1		
Fb16066	LA Calypso 2		
Fb16067	LA Calypso 3		
Fb16068	LA Calypso 4		
Fb16069	LA Corazon 1		
Fb16070	LA Corazon 2		
Fb16071	LA Corazon 3		
Fb16072	LA Corazon 4		
Fb16073	LA Cumbia		
Fb16074	LA Espagno 1		
Fb16075	LA Espagno 2		
Fb16076	LA Espagno 3		

8beat Drum Fill-b(Specific)			
Phrase No.	Phrase Name	Phrase No.	Phrase Name
Fb08001	RB Blues 1	Fb08077	LA Bossa 2
Fb08002	RB Blues 2	Fb08078	LA Cumbia 1
Fb08003	RB Blues 3	Fb08079	LA Cumbia 2
Fb08004	RB Blues 4	Fb08080	LA Rhumba 1
Fb08005	RB Blues 5	Fb08081	LA Rhumba 2
Fb08006	RB I Feel 1	Fb08082	LA Rhumba 3
Fb08007	RB I Feel 2	Fb08083	LA Rhumba 4
Fb08008	RB I Feel 3	Fb08084	LA Rhumba 5
Fb08009	RB I Feel 4	Fb08085	LA Rhumba 6
Fb08010	RB Motor 1	Fb08086	LA Rhumba 7
Fb08011	RB Motor 2	Fb08087	LA Rhumba 8
Fb08012	RB Motor 3	Fb08088	LA Rhumba 9
Fb08013	RB Motor 4	Fb08089	LA Rhumba 10
Fb08014	RB Motor 5	Fb08090	LA Rhumba 11
Fb08015	RB Motor 6	Fb08091	LA Rhumba 12
Fb08016	RB Motor 7	Fb08092	LA Rhumba 13
Fb08017	RB Motor 8	Fb08093	LA Rhumba 14
Fb08018	RB Motor 9	Fb08094	LA Ska 1
Fb08019	RB Motor 10	Fb08095	LA Ska 2
Fb08020	RB Motor 11	Fb08096	LA Ska 3
Fb08021	RB Motor 12	Fb08097	LA Ska 4
Fb08022	RB Motor 13	Fb08098	WO Ju-Ju 1
Fb08023	RB Motor 14	Fb08099	WO Ju-Ju 2
Fb08024	RB Motor 15	Fb08100	WO Ju-Ju 3
Fb08025	RB Motor 16	Fb08101	WO Ju-Ju 4
Fb08026	RB Motor 17	Fb08102	WO New Age
Fb08027	RB Motor 18	Fb08103	WO Reggae 1
Fb08028	RB R&B 1	Fb08104	WO Reggae 2
Fb08029	RB R&B 2		
Fb08030	RB R&B 3		
Fb08031	RB R&B 4		
Fb08032	RB R&B 5		
Fb08033	RB R&B 6		
Fb08034	RB R&B 7		
Fb08035	RB R&B 8		
Fb08036	RB R&B 9		
Fb08037	RB R&B 10		
Fb08038	RB R&B 11		
Fb08039	RB R&B 12		
Fb08040	RB R&B 13		
Fb08041	RB R&B 14		
Fb08042	RB R&B 15		
Fb08043	RB Slow Jam		
Fb08044	RB Soul 1		
Fb08045	RB Soul 2		
Fb08046	RB Soul 3		
Fb08047	RB Soulful 1		
Fb08048	RB Soulful 2		
Fb08049	RB Soulful 3		
Fb08050	RB Soulful 4		
Fb08051	RB Soulful 5		
Fb08052	JA Ballad 1		
Fb08053	JA Ballad 2		
Fb08054	JA Ballad 3		
Fb08055	JA Ballad 4		
Fb08056	JA Ballad 5		
Fb08057	JA Maiden 1		
Fb08058	JA Maiden 2		
Fb08059	JA Maiden 3		
Fb08060	JA Maiden 4		
Fb08061	JA Swing 1		
Fb08062	JA Swing 2		
Fb08063	JA Swing 3		
Fb08064	JA Swing 4		
Fb08065	JA Swing 5		
Fb08066	JA Swing 6		
Fb08067	JA Swing 7		
Fb08068	JA Swingin 1		
Fb08069	JA Swingin 2		
Fb08070	JA Swingin 3		
Fb08071	JA Swingin 4		
Fb08072	JA Swingin 5		
Fb08073	JA Swingin 6		
Fb08074	JA Swingin 7		
Fb08075	JA Swingin 8		
Fb08076	LA Bossa 1		

3/4beat Drum Fill-b (Specific)		
Phrase No.	Phrase Name	
Fb34001	JA Vince	1
Fb34002	JA Vince	2
Fb34003	JA Vince	3
Fb34004	JA Vince	4

16beat Drum Fill-c(General)	
Phrase No.	Phrase Name
Fc16001	GE 4onFloor
Fc16002	GE Ballade 1
Fc16003	GE Ballade 2
Fc16004	GE Ballade 3
Fc16005	GE Ballade 4
Fc16006	GE Ballot 1
Fc16007	GE Ballot 2
Fc16008	GE Ballot 3
Fc16009	GE Ballot 4
Fc16010	GE Ballot 5
Fc16011	GE Ballot 6
Fc16012	GE Ballot 7
Fc16013	GE Ballot 8
Fc16014	GE Bread 1
Fc16015	GE Bread 2
Fc16016	GE Bread 3
Fc16017	GE Bread 4
Fc16018	GE Bread 5
Fc16019	GE Bread 6
Fc16020	GE Bread 7
Fc16021	GE Bread 8
Fc16022	GE Bread 9
Fc16023	GE Bread 10
Fc16024	GE Bread 11
Fc16025	GE Hustlin 1
Fc16026	GE Hustlin 2
Fc16027	GE Hustlin 3
Fc16028	GE Pushed 1
Fc16029	GE Pushed 2
Fc16030	GE Vanilla 1
Fc16031	GE Vanilla 2

8beat Drum Fill-c(General)			
Phrase No.	Phrase Name	Phrase No.	Phrase Name
Fc08001	GE 4onFlor 1	Fc08077	GE Free 6
Fc08002	GE 4onFlor 2	Fc08078	GE Free 7
Fc08003	GE 68Shuffle	Fc08079	GE Free 8
Fc08004	GE Ballad 1	Fc08080	GE Free 9
Fc08005	GE Ballad 2	Fc08081	GE Free 10
Fc08006	GE Ballad 3	Fc08082	GE Light 1
Fc08007	GE Ballad 4	Fc08083	GE Light 2
Fc08008	GE Ballad 5	Fc08084	GE Light 3
Fc08009	GE Ballad 6	Fc08085	GE Light 4
Fc08010	GE Ballad 7	Fc08086	GE Lighter 1
Fc08011	GE Ballad 8	Fc08087	GE Lighter 2
Fc08012	GE Ballad 9	Fc08088	GE Litest 1
Fc08013	GE Ballade 1	Fc08089	GE Litest 2
Fc08014	GE Ballade 2	Fc08090	GE Litest 3
Fc08015	GE Ballade 3	Fc08091	GE Litest 4
Fc08016	GE Ballade 4	Fc08092	GE Pushed
Fc08017	GE Ballade 5	Fc08093	GE Shuffle 1
Fc08018	GE Ballade 6	Fc08094	GE Shuffle 2
Fc08019	GE BalladG 1	Fc08095	GE Shuffle 3
Fc08020	GE BalladG 2	Fc08096	GE Shuffle 4
Fc08021	GE BalladG 3	Fc08097	GE Shuffle 5
Fc08022	GE BalladG 4	Fc08098	GE Shuffle 6
Fc08023	GE BalladP 1	Fc08099	GE Shuffle 7
Fc08024	GE BalladP 2	Fc08100	GE Shuffle 8
Fc08025	GE BalladP 3	Fc08101	GE Shuffle 9
Fc08026	GE BalladP 4	Fc08102	GE Shuffl 10
Fc08027	GE BalladP 5	Fc08103	GE Shuffl 11
Fc08028	GE BalladP 6	Fc08104	GE Shuffl 12
Fc08029	GE BalladP 7	Fc08105	GE Shuffl 13
Fc08030	GE BalladP 8	Fc08106	GE Shuffl 14
Fc08031	GE BalladP 9	Fc08107	GE Shuffl 15
Fc08032	GE BalldEP 1	Fc08108	GE Shufled 1
Fc08033	GE BalldEP 2	Fc08109	GE Shufled 2
Fc08034	GE BalldEP 3	Fc08110	GE Shufled 3
Fc08035	GE BalldEP 4	Fc08111	GE Shufled 4
Fc08036	GE BalldEP 5	Fc08112	GE Shufled 5
Fc08037	GE Ballot 1	Fc08113	GE Shuflin 1
Fc08038	GE Ballot 2	Fc08114	GE Shuflin 2
Fc08039	GE Bumpin' 1	Fc08115	GE Shuflin 3
Fc08040	GE Bumpin' 2	Fc08116	GE Shuflin 4
Fc08041	GE Bumpin' 3	Fc08117	GE Shuflin 5
Fc08042	GE Bumpin' 4	Fc08118	GE Shuflin 6
Fc08043	GE Bumpin' 5	Fc08119	GE Shuflin 7
Fc08044	GE Bumpin' 6	Fc08120	GE Shuflin 8
Fc08045	GE Bumpin' 7	Fc08121	GE Shuflin 9
Fc08046	GE Bumpin' 8	Fc08122	GE Shufln 10
Fc08047	GE Bumpin' 9	Fc08123	GE Shufln 11
Fc08048	GE Bumpin 10	Fc08124	GE Shufln 12
Fc08049	GE Bumpin 11	Fc08125	GE Shufln 13
Fc08050	GE Bumpin 12		
Fc08051	GE Bumpin 13		
Fc08052	GE Bumpin 14		
Fc08053	GE Bumpin 15		
Fc08054	GE Bumpin 16		
Fc08055	GE Butter 1		
Fc08056	GE Butter 2		
Fc08057	GE Butter 3		
Fc08058	GE Butter 4		
Fc08059	GE Butter 5		
Fc08060	GE Butter 6		
Fc08061	GE Butter 7		
Fc08062	GE Butter 8		
Fc08063	GE Butter 9		
Fc08064	GE Butter 10		
Fc08065	GE Butter 11		
Fc08066	GE Butter 12		
Fc08067	GE Butter 13		
Fc08068	GE Butter 14		
Fc08069	GE Butter 15		
Fc08070	GE Butter 16		
Fc08071	GE Freddy		
Fc08072	GE Free 1		
Fc08073	GE Free 2		
Fc08074	GE Free 3		
Fc08075	GE Free 4		
Fc08076	GE Free 5		

3/4beat Drum Fill-c (General)	
Phrase No.	Phrase Name
Fc34001	GE Ballad 1
Fc34002	GE Ballad 2
Fc34003	GE Pop 1
Fc34004	GE Pop 2
Fc34005	GE Pop 3
Fc34006	GE Pop 4
Fc34007	GE Pop 5
Fc34008	GE Pop 6
Fc34009	GE Pop 7
Fc34010	GE Pop 8
Fc34011	GE Pop 9
Fc34012	GE Pop 10
Fc34013	GE Pop 11
Fc34014	GE Pop 12
Fc34015	GE Swaltz 1
Fc34016	GE Swaltz 2

Phrase List (Drum Fill-b:Drum Parts)

16beat Drum Parts					
Phrase No.	Phrase Name	Phrase No.	Phrase Name	Phrase No.	Phrase Name
DP16001	DA AnaBell 1	DP16077	DA SD Fill 4	DP16153	JA Ride 8
DP16002	DA AnaBell 2	DP16078	DA SD Fill 5	DP16154	JA Ride 9
DP16003	DA Clap 1	DP16079	DA SD Fill 6	DP16155	JA Ride 10
DP16004	DA Clap 2	DP16080	DA SD Fill 7	DP16156	JA Snare 1
DP16005	DA Hats 1	DP16081	DA SD Fill 8	DP16157	JA Snare 2
DP16006	DA Hats 2	DP16082	DA SD Fill 9	DP16158	JA Snare 3
DP16007	DA Hats 3	DP16083	DA SD Fill 10	DP16159	JA Snare 4
DP16008	DA Hats 4	DP16084	DA SD Fill 11	DP16160	JA Snare 5
DP16009	DA Hats 5	DP16085	DA SD Fill 12	DP16161	JA Snare 6
DP16010	DA Hats 6	DP16086	PO Hats 1	DP16162	JA Snare 7
DP16011	DA Hats 7	DP16087	PO Hats 2	DP16163	JA Snare 8
DP16012	DA Hats 8	DP16088	PO Hats 3	DP16164	JA Snare 9
DP16013	DA Hats 9	DP16089	PO Hats 4	DP16165	JA Snare 10
DP16014	DA Hats 10	DP16090	PO Hats 5	DP16166	JA Snare 11
DP16015	DA Hats 11	DP16091	PO Hats 6	DP16167	JA Snare 12
DP16016	DA Hats 12	DP16092	PO Hats 7	DP16168	JA Snare 13
DP16017	DA Hats 13	DP16093	PO Hats 8	DP16169	JA Snare 14
DP16018	DA Hats 14	DP16094	PO Hats 9	DP16170	JA Snare 15
DP16019	DA Hats 15	DP16095	PO Hats 10	DP16171	JA Snare 16
DP16020	DA Hats 16	DP16096	PO Hats 11	DP16172	JA Snare 17
DP16021	DA Hats 17	DP16097	PO Kick 1	DP16173	JA Snare 18
DP16022	DA Hats 18	DP16098	PO Kick 2	DP16174	JA Snare 19
DP16023	DA Hats 19	DP16099	PO PeaSoup 1		
DP16024	DA Hats 20	DP16100	PO PeaSoup 2		
DP16025	DA Hats 21	DP16101	PO PeaSoup 3		
DP16026	DA Hi-Q 1	DP16102	PO Ride 1		
DP16027	DA Hi-Q 2	DP16103	PO Ride 2		
DP16028	DA Hi-Q 3	DP16104	PO Snare 1		
DP16029	DA Hi-Q 4	DP16105	PO Snare 2		
DP16030	DA Kick 1	DP16106	PO Snare 3		
DP16031	DA Kick 2	DP16107	JA Hats 1		
DP16032	DA Kick 3	DP16108	JA Hats 2		
DP16033	DA Kick 4	DP16109	JA Hats 3		
DP16034	DA Kick 5	DP16110	JA Hats 4		
DP16035	DA Kick 6	DP16111	JA Hats 5		
DP16036	DA Kick 7	DP16112	JA Hats 6		
DP16037	DA Kick 8	DP16113	JA Hats 7		
DP16038	DA Kick 9	DP16114	JA Hats 8		
DP16039	DA Kick 10	DP16115	JA Hats 9		
DP16040	DA Kick 11	DP16116	JA Hats 10		
DP16041	DA Kick 12	DP16117	JA Hats 11		
DP16042	DA Kick 13	DP16118	JA Hats 12		
DP16043	DA Kick 14	DP16119	JA Hats 13		
DP16044	DA Rave	DP16120	JA Hats 14		
DP16045	DA Ride	DP16121	JA Hats 15		
DP16046	DA Rim	DP16122	JA Hats 16		
DP16047	DA Slap 1	DP16123	JA Kick 1		
DP16048	DA Slap 2	DP16124	JA Kick 2		
DP16049	DA Snare 1	DP16125	JA Kick 3		
DP16050	DA Snare 2	DP16126	JA Kick 4		
DP16051	DA Snare 3	DP16127	JA Kick 5		
DP16052	DA Snare 4	DP16128	JA Kick 6		
DP16053	DA Snare 5	DP16129	JA Kick 7		
DP16054	DA Snare 6	DP16130	JA Kick 8		
DP16055	DA Snare 7	DP16131	JA Kick 9		
DP16056	DA Snare 8	DP16132	JA Kick 10		
DP16057	DA Snare 9	DP16133	JA Kick 11		
DP16058	DA Snare 10	DP16134	JA Kick 12		
DP16059	DA Snare 11	DP16135	JA Kick 13		
DP16060	DA Snare 12	DP16136	JA Kick 14		
DP16061	DA Snare 13	DP16137	JA Kick 15		
DP16062	DA Snare 14	DP16138	JA Kick 16		
DP16063	DA Snare 15	DP16139	JA Kick 17		
DP16064	DA Snare 16	DP16140	JA Kick 18		
DP16065	DA Snare 17	DP16141	JA Kick 19		
DP16066	DA Snare 18	DP16142	JA Kick 20		
DP16067	DA Snare 19	DP16143	JA Kick 21		
DP16068	DA Snare 20	DP16144	JA Kick 22		
DP16069	DA Snare 21	DP16145	JA Kick 23		
DP16070	DA Snare 22	DP16146	JA Ride 1		
DP16071	DA Snare 23	DP16147	JA Ride 2		
DP16072	DA Snare 24	DP16148	JA Ride 3		
DP16073	DA Snare 25	DP16149	JA Ride 4		
DP16074	DA SD Fill 1	DP16150	JA Ride 5		
DP16075	DA SD Fill 2	DP16151	JA Ride 6		
DP16076	DA SD Fill 3	DP16152	JA Ride 7		

8beat Drum Parts			
Phrase No.	Phrase Name	Phrase No.	Phrase Name
08038 PO	Kick 11	DP08114	JA Ride 11
DP08039	PO Kick 12	DP08115	JA Ride 12
DP08040	PO Kick 13	DP08116	JA Ride 13
DP08041	PO Kick 14	DP08117	JA Ride 14
DP08042	PO Ride 1	DP08118	JA Ride 15
DP08043	PO Ride 2	DP08119	JA Ride 16
DP08044	PO Rim 1	DP08120	JA Ride 17
DP08045	PO Rim 2	DP08121	JA Ride 18
DP08046	PO Rim 3	DP08122	JA Ride 19
DP08047	PO Rim 4	DP08123	JA Ride 20
DP08048	PO Snare 1	DP08124	JA Ride 21
DP08049	PO Snare 2	DP08125	JA Ride 22
DP08050	PO Snare 3	DP08126	JA Ride 23
DP08051	PO Snare 4	DP08127	JA Rim
DP08052	PO Snare 5	DP08128	JA Snare 1
DP08053	PO Snare 6	DP08129	JA Snare 2
DP08054	PO SnareFill	DP08130	JA Snare 3
DP08055	CW Nash	DP08131	JA Snare 4
DP08056	JA Brushin'1	DP08132	JA Snare 5
DP08057	JA Brushin'2	DP08133	JA Snare 6
DP08058	JA Brushin'3	DP08134	JA Snare 7
DP08059	JA Brushin'4	DP08135	JA Snare 8
DP08060	JA Brushin'5	DP08136	JA Snare 9
DP08061	JA Compin' 1	DP08137	JA Snare 10
DP08062	JA Compin' 2	DP08138	JA Snare 11
DP08063	JA Compin' 3	DP08139	JA Snare 12
DP08064	JA Compin' 4	DP08140	JA Snare 13
DP08065	JA Compin' 5	DP08141	JA Snare 14
DP08066	JA Compin' 6	DP08142	JA Snare 15
DP08067	JA Compin' 7	DP08143	JA SD Roll 1
DP08068	JA Compin' 8	DP08144	JA SD Roll 2
DP08069	JA Compin' 9	DP08145	JA Toms
DP08070	JA Compin 10		
DP08071	JA Compin 11		
DP08072	JA Compin 12		
DP08073	JA Compin 13		
DP08074	JA Compin 14		
DP08075	JA Compin 15		
DP08076	JA Compin 16		
DP08077	JA Compin 17		
DP08078	JA Compin 18		
DP08079	JA Compin 19		
DP08080	JA Compin 20		
DP08081	JA Crash 1		
DP08082	JA Crash 2		
DP08083	JA Crash 3		
DP08084	JA Hats 1		
DP08085	JA Hats 2		
DP08086	JA Hats 3		
DP08087	JA Hats 4		
DP08088	JA Hats 5		
DP08089	JA Hats 6		
DP08090	JA Hats 7		
DP08091	JA Hats 8		
DP08092	JA Hats 9		
DP08093	JA Hats 10		
DP08094	JA Hats 11		
DP08095	JA Hats 12		
DP08096	JA HatsPed 1		
DP08097	JA HatsPed 2		
DP08098	JA HatsPed 3		
DP08099	JA Kick 1		
DP08100	JA Kick 2		
DP08101	JA Kick 3		
DP08102	JA Kick 4		
DP08103	JA Kick 5		
DP08104	JA Ride 1		
DP08105	JA Ride 2		
DP08106	JA Ride 3		
DP08107	JA Ride 4		
DP08108	JA Ride 5		
DP08109	JA Ride 6		
DP08110	JA Ride 7		
DP08111	JA Ride 8		
DP08112	JA Ride 9		
DP08113	JA Ride 10		

3/4beat Drum Fill-c (General)											
Phrase No.	Phrase Name	Phrase No.	Phrase Name	Phrase No.	Phrase Name	Phrase No.	Phrase Name	Phrase No.	Phrase Name	Phrase No.	Phrase Name
DP34001	PO Hats 1	DP34016	PO Kick 3	DP34031	PO Kick 19	DP34046	PO Ride 7	DP34061	PO Snare 6	DP34076	CW Hats 1
DP34002	PO Hats 2	DP34017	PO Kick 4	DP34032	PO Kick 20	DP34047	PO Ride 8	DP34062	PO Snare 7	DP34077	CW Hats 2
DP34003	PO Hats 3	DP34018	PO Kick 5	DP34033	PO Kick 21	DP34048	PO Ride 9	DP34063	PO Snare 8	DP34078	CW Hats 3
DP34004	PO Hats 4	DP34019	PO Kick 6	DP34034	PO Kick 22	DP34049	PO Ride 10	DP34064	PO Snare 9	DP34079	CW Hats 4
DP34005	PO Hats 5	DP34020	PO Kick 7	DP34035	PO Kick 23	DP34050	PO Ride 11	DP34065	PO Snare 10	DP34080	JA Kick 1
DP34006	PO Hats 6	DP34021	PO Kick 8	DP34036	PO Kick 24	DP34051	PO Rim 1	DP34066	PO Snare 11	DP34081	JA Kick 2
DP34007	PO Hats 7	DP34022	PO Kick 9	DP34037	PO Kick 25	DP34052	PO Rim 2	DP34067	PO Snare 12	DP34082	JA Brushin'
DP34008	PO HatsOpen	DP34023	PO Kick 10	DP34038	PO Kick 26	DP34053	PO Rim 3	DP34068	PO Snare 13	DP34083	JA HatsPedal
DP34009	PO HatsPed 1	DP34024	PO Kick 11	DP34039	PO Kick 27	DP34054	PO Rim 4	DP34069	PO Snare 14	DP34084	JA Ride 1
DP34010	PO HatsPed 2	DP34025	PO Kick 12	DP34040	PO Ride 1	DP34055	PO Rim 5	DP34070	PO Toms 1	DP34085	JA Ride 2
DP34011	PO HatsPed 3	DP34026	PO Kick 13	DP34041	PO Ride 2	DP34056	PO Snare 1	DP34071	PO Toms 2	DP34086	JA Ride 3
DP34012	PO HatsPed 4	DP34027	PO Kick 14	DP34042	PO Ride 3	DP34057	PO Snare 2	DP34072	PO Toms 3	DP34087	JA Ride 4
DP34013	PO HatsPed 5	DP34028	PO Kick 15	DP34043	PO Ride 4	DP34058	PO Snare 3	DP34073	PO Toms 4		
DP34014	PO Kick 1	DP34029	PO Kick 16	DP34044	PO Ride 5	DP34059	PO Snare 4	DP34074	CW Brushin'1		
DP34015	PO Kick 2	DP34030	PO Kick 18	DP34045	PO Ride 6	DP34060	PO Snare 5	DP34075	CW Brushin'2		

16beat Percussion			
Phrase No.	Phrase Name	Phrase No.	Phrase Name
PC16001	DA Agogo	PC16077	GE Popcsn 18
PC16002	DA Cabasa	PC16078	GE Popcsn 19
PC16003	DA Conga 1	PC16079	GE Popcsn 20
PC16004	DA Conga 2	PC16080	GE Popcsn 21
PC16005	DA Eurobeat	PC16081	GE Popcsn 22
PC16006	DA Shaker		
PC16007	DA Street		
PC16008	DA Triangle		
PC16009	PO Conga 1		
PC16010	PO Conga 2		
PC16011	PO Conga 3		
PC16012	PO Shaker 1		
PC16013	PO Shaker 2		
PC16014	PO Shaker 3		
PC16015	CW Nash		
PC16016	JA Cow		
PC16017	LA Batucda 1		
PC16018	LA Batucda 2		
PC16019	LA Batucda 3		
PC16020	LA Batucda 4		
PC16021	LA Batucda 5		
PC16022	LA Batucda 6		
PC16023	LA Batucda 7		
PC16024	LA Batucda 8		
PC16025	LA Bomba 1		
PC16026	LA Bomba 2		
PC16028	LA Calypso 2		
PC16029	LA Calypso 3		
PC16030	LA Compars 1		
PC16031	LA Compars 2		
PC16032	LA Compars 3		
PC16033	LA Compars 4		
PC16034	LA Compars 5		
PC16035	LA Coro		
PC16036	LA Rhumba 1		
PC16037	LA Rhumba 2		
PC16038	LA Samba		
PC16039	LA SambaPp 1		
PC16040	LA SambaPp 2		
PC16041	LA SambaPp 3		
PC16042	LA SambaPp 4		
PC16043	LA SambaPp 5		
PC16044	LA SambaPp 6		
PC16045	LA Son 1		
PC16046	LA Son 2		
PC16047	LA Son 3		
PC16048	LA Son 4		
PC16049	LA Son 5		
PC16050	LA Son 6		
PC16051	LA Son 7		
PC16052	WO Ghana 1		
PC16053	WO Ghana 2		
PC16054	WO Ghana 3		
PC16027	LA Calypso 1		
PC16055	WO Ghana 4		
PC16056	WO Ghana 5		
PC16057	WO Ghana 6		
PC16058	WO Ghana 7		
PC16059	WO Reggae		
PC16060	GE Popcun 1		
PC16061	GE Popcun 2		
PC16062	GE Popcun 3		
PC16063	GE Popcun 4		
PC16064	GE Popcun 5		
PC16065	GE Popcun 6		
PC16066	GE Popcun 7		
PC16067	GE Popcun 8		
PC16068	GE Popcun 9		
PC16069	GE Popcsn 10		
PC16070	GE Popcsn 11		
PC16071	GE Popcsn 12		
PC16072	GE Popcsn 13		
PC16073	GE Popcsn 14		
PC16074	GE Popcsn 15		
PC16075	GE Popcsn 16		
PC16076	GE Popcsn 17		

8beat Percussion	
Phrase No.	Phrase Name
PC08001	DA Cabasa
PC08002	DA Eurobeat
PC08003	PO Bongo 1
PC08004	PO Bongo 2
PC08005	PO Conga
PC08006	PO Cowbell
PC08007	PO Tamb 1
PC08008	PO Tamb 2
PC08009	PO Tamb 3
PC08010	PO Tamb 4
PC08011	RO Surfin' 1
PC08012	RO Surfin' 2
PC08013	CW Nash
PC08014	JA N'Awlins
PC08015	LA Bossa 1
PC08016	LA Bossa 2
PC08017	LA Cha Cha 1
PC08018	LA Cha Cha 2
PC08019	LA Cha Cha 3
PC08020	LA Cha Cha 4
PC08021	LA Mambo 1
PC08022	LA Mambo 2
PC08023	LA Mambo 3
PC08024	LA Mambo 4
PC08025	LA Merengu 1
PC08026	LA Merengu 2
PC08027	LA Merengu 3
PC08028	LA Merengu 4
PC08029	LA Merengu 5
PC08030	LA Salsa 1
PC08031	LA Salsa 2
PC08032	LA Salsa 3
PC08033	LA Salsa 4
PC08034	LA Salsa 5
PC08035	GE Popcun 1
PC08036	GE Popcun 2
PC08037	GE Popcun 3
PC08038	GE Popcun 4
PC08039	GE Popcun 5
PC08040	GE Popcun 6
PC08041	GE Popcun 7
PC08042	GE Popcun 8
PC08043	GE Popcun 9
PC08044	GE Popcsn 10
PC08045	GE Popcsn 11
PC08046	GE Popcsn 12
PC08047	GE Popcsn 13
PC08048	GE Popcsn 14
PC08049	GE Popcsn 15

3/4beat Percussion	
Phrase No.	Phrase Name
PC34001	GE Popcun 1
PC34002	GE Popcun 2
PC34003	GE Popcun 3
PC34004	GE Popcun 4

Phrase List (Percussion Fill)

16beat Percussion Fill	
Phrase No.	Phrase Name
PF16001	DA Triangle
PF16002	PO Abanico 1
PF16003	PO Abanico 2
PF16004	PO Abanico 3
PF16005	LA Abanico
PF16006	LA Batucda 1
PF16007	LA Batucda 2
PF16008	LA Batucda 3
PF16009	LA Batucda 4
PF16010	LA Batucda 5
PF16011	LA Batucda 6
PF16012	LA Batucda 7
PF16013	LA Batucda 8
PF16014	LA Batucda 9
PF16015	LA Batcda 10
PF16016	LA Batcda 11
PF16017	LA Bomba 1
PF16018	LA Bomba 2
PF16019	LA Bomba 3
PF16020	LA Bomba 4
PF16021	LA Bomba 5
PF16022	LA Bomba 6
PF16023	LA Calypso 1
PF16024	LA Calypso 2
PF16025	LA Calypso 3
PF16026	LA Calypso 4
PF16027	LA Calypso 5
PF16028	LA Compars 1
PF16029	LA Compars 2
PF16030	LA Compars 3
PF16031	LA Compars 4
PF16032	LA Compars 5
PF16033	LA Compars 6
PF16034	LA Compars 7
PF16035	LA Compars 8
PF16036	LA Espagno 1
PF16037	LA Espagno 2
PF16038	LA Espagno 3
PF16039	LA Espagno 4
PF16040	LA Rhumba 1
PF16041	LA Rhumba 2
PF16042	LA Rhumba 3
PF16043	LA Rhumba 4
PF16044	LA Rhumba 5
PF16045	LA Rhumba 6
PF16046	LA Samba 1
PF16047	LA Samba 2
PF16048	LA Samba 3
PF16049	LA SambaPp 1
PF16050	LA SambaPp 2
PF16051	LA Son 1
PF16052	LA Son 2
PF16053	LA Son 3
PF16054	LA Son 4
PF16055	LA Son 5
PF16056	LA Son 6
PF16057	LA Son 7
PF16058	LA Son 8
PF16059	WO Ghana 1
PF16060	WO Ghana 2
PF16061	WO Ghana 3
PF16062	WO Ghana 4
PF16063	WO Ghana 5
PF16064	WO Ghana 6
PF16065	WO Ghana 7
PF16066	WO Ghana 8
PF16067	WO Ghana 9
PF16068	WO Ghana 10
PF16069	GE Ballad
PF16070	GE Popcusrn 1
PF16071	GE Popcusrn 2
PF16072	GE Popcusrn 3
PF16073	GE Popcusrn 4
PF16074	GE Popcusrn 5
PF16075	GE Popcusrn 6

8beat Percussion Fill	
Phrase No.	Phrase Name
PF08001	LA Abanico 1
PF08002	LA Abanico 2
PF08003	LA Abanico 3
PF08004	LA Cha Cha 1
PF08005	LA Cha Cha 2
PF08006	LA Cha Cha 3
PF08007	LA Mambo 1
PF08008	LA Mambo 2
PF08009	LA Mambo 3
PF08010	LA Mambo 4
PF08011	LA Mambo 5
PF08012	LA Mambo 6
PF08013	LA Mambo 7
PF08014	LA Mambo 8
PF08015	LA Merengu 1
PF08016	LA Merengu 2
PF08017	LA Merengu 3
PF08018	LA Merengu 4
PF08019	LA Merengu 5
PF08020	LA Merengu 6
PF08021	LA Merengu 7
PF08022	LA Salsa 1
PF08023	LA Salsa 2
PF08024	LA Salsa 3
PF08025	LA Salsa 4
PF08026	LA Salsa 5
PF08027	GE Popcusrn

3/4beat Percussion Fill		
Phrase No.	Phrase Name	
PF34001	GE Tamb	1
PF34002	GE Tamb	2

16beat Bass -a					
Phrase No.	Phrase Name	Phrase No.	Phrase Name	Phrase No.	Phrase Name
Ba16001	DA ComeOn! 1	Ba16090	RB Funkier 6	Ba16179	LA Rhumba 1
Ba16002	DA ComeOn! 2	Ba16091	RB Funkier 7	Ba16180	LA Rhumba 2
Ba16003	DA ComeOn! 3	Ba16092	RB Funkier 8	Ba16181	LA Rhumba 3
Ba16004	DA Disco	Ba16093	RB Funkier 9	Ba16182	LA Salsa 1
Ba16005	DA DisFunk 1	Ba16094	RB Fnkier 10	Ba16183	LA Salsa 2
Ba16006	DA DisFunk 2	Ba16095	RB Fnkier 11	Ba16184	LA Salsa 3
Ba16007	DA DisFunk 3	Ba16096	RB Fnkier 12	Ba16185	LA Salsa 4
Ba16008	DA DisFunk 4	Ba16097	RB Fnkier 13	Ba16186	LA Samba 1
Ba16009	DA DisFunk 5	Ba16098	RB Fnkier 14	Ba16187	LA Samba 2
Ba16010	DA DisFunk 6	Ba16099	RB Funkyst 1	Ba16188	LA Samba 3
Ba16011	DA DisFunk 7	Ba16100	RB Funkyst 2	Ba16189	LA Samba 4
Ba16012	DA EuroBt. 1	Ba16101	RB FunkBay 1	Ba16190	LA Samba 5
Ba16013	DA EuroBt. 2	Ba16102	RB FunkBay 2	Ba16191	LA Samba 6
Ba16014	DA Get 'Nuff	Ba16103	RB FunkBay 3	Ba16192	LA Samba 7
Ba16015	DA Hip 1	Ba16104	RB FunkBay 4	Ba16193	LA Samba 8
Ba16016	DA Hip 2	Ba16105	RB FunkBay 5	Ba16194	LA Samba 9
Ba16017	DA Hip 3	Ba16106	RB FunkBay 6	Ba16195	LA Samba 10
Ba16018	DA Hip 4	Ba16107	RB FunkBay 7	Ba16196	LA SambaPp 1
Ba16019	DA Hip 5	Ba16108	RB Nawlins 1	Ba16197	LA SambaPp 2
Ba16020	DA Hip 6	Ba16109	RB Nawlins 2	Ba16198	LA SambaPp 3
Ba16021	DA Hip 7	Ba16110	RB Nawlins 3	Ba16199	LA SambaPp 4
Ba16022	DA Hop 1	Ba16111	RB Nawlins 4	Ba16200	LA SambaPp 5
Ba16023	DA Hop 2	Ba16112	RB R&B 1	Ba16201	LA Soca 1
Ba16024	DA Hop 3	Ba16113	RB R&B 2	Ba16202	LA Soca 2
Ba16025	DA Hop 4	Ba16114	RB R&B 3	Ba16203	LA Soca 3
Ba16026	DA Hop 5	Ba16115	RB Slow Jam	Ba16204	LA Soca 4
Ba16027	DA Rap 1	Ba16116	RB Soulful 1	Ba16205	LA Son 1
Ba16028	DA Rap 2	Ba16117	RB Soulful 2	Ba16206	LA Son 2
Ba16029	DA Rap 3	Ba16118	RB Soulful 3	Ba16207	LA Son 3
Ba16030	DA Rap 4	Ba16119	RB Soulful 4	Ba16208	LA Son 4
Ba16031	DA Rap 5	Ba16120	RB Soulful 5	Ba16209	LA Son 5
Ba16032	DA Rave 1	Ba16121	RB Soulful 6	Ba16210	LA Son 6
Ba16033	DA Rave 2	Ba16122	RB Soulful 7	Ba16211	LA Son 7
Ba16034	DA Rave 3	Ba16123	RB Soulful 8	Ba16212	LA Tejano 1
Ba16035	DA Rave 4	Ba16124	RB Soulful 9	Ba16213	LA Tejano 2
Ba16036	DA Rave 5	Ba16125	RB Soulfl 10	Ba16214	LA Tejano 3
Ba16037	DA SynBass 1	Ba16126	RB Soulfl 11	Ba16215	LA Tejano 4
Ba16038	DA SynBass 2	Ba16127	RB Soulfl 12	Ba16216	WO Hi-Life 1
Ba16039	DA SynBass 3	Ba16128	RB Soulfl 13	Ba16217	WO Hi-Life 2
Ba16040	DA SynBass 4	Ba16129	RB Soulfl 14	Ba16218	WO Hi-Life 3
Ba16041	DA SynBass 5	Ba16130	RB Soulfl 15	Ba16219	WO Hi-Life 4
Ba16042	DA SynBass 6	Ba16131	RB SynBass 1	Ba16220	WO Hi-Life 5
Ba16043	DA SynBass 7	Ba16132	RB SynBass 2	Ba16221	WO Hi-Life 6
Ba16044	DA SynBass 8	Ba16133	RB SynBass 3	Ba16222	WO Mozambique
Ba16045	DA SynBass 9	Ba16134	RB SynBass 4	Ba16223	WO Reggae 1
Ba16046	DA SyBass 10	Ba16135	RB SynBass 5	Ba16224	WO Reggae 2
Ba16047	DA SyBass 11	Ba16136	RB SynBass 6	Ba16225	WO Reggae 3
Ba16048	DA Tekno 1	Ba16137	RB SynBass 7	Ba16226	WO Reggae 4
Ba16049	DA Tekno 2	Ba16138	JA AfroJaz 1	Ba16227	WO Reggae 5
Ba16050	DA Tekno 3	Ba16139	JA AfroJaz 2	Ba16228	WO Reggae 6
Ba16051	DA Tekno 4	Ba16140	JA AfroJaz 3	Ba16229	WO Reggae 7
Ba16052	DA Tekno 5	Ba16141	JA AfroJaz 4	Ba16230	WO Reggae 8
Ba16053	FO Feel	Ba16142	JA Fission 1	Ba16231	WO Reggae 9
Ba16054	FO Playbak 1	Ba16143	JA Fission 2	Ba16232	WO Reggae 10
Ba16055	FO Playbak 2	Ba16144	JA Fission 3	Ba16233	WO Reggae 11
Ba16056	FO Siren 1	Ba16145	JA Fission 4	Ba16234	WO Soweto 1
Ba16057	FO Siren 2	Ba16146	JA Fission 5	Ba16235	WO Soweto 2
Ba16058	FO Soupy 1	Ba16147	JA Fission 6	Ba16236	WO Soweto 3
Ba16059	FO Soupy 2	Ba16148	JA JazFunk 1	Ba16237	WO Soweto 4
Ba16060	FO Value 1	Ba16149	JA JazFunk 2	Ba16238	WO Zydeco 1
Ba16061	FO Value 2	Ba16150	JA JazFunk 3	Ba16239	WO Zydeco 2
Ba16062	RO Dirge 1	Ba16151	JA JazFunk 4	Ba16240	WO Zydeco 3
Ba16063	RO Dirge 2	Ba16152	JA JazFunk 5	Ba16241	WO Zydeco 4
Ba16064	RO Dirge 3	Ba16153	JA JazFunk 6	Ba16242	WO Zydeco 5
Ba16065	RO Dirge 4	Ba16154	JA JazFunk 7	Ba16243	WO Zydeco 6
Ba16066	RO Metal 1	Ba16155	LA Bomba 1	Ba16244	b# Acid
Ba16067	RO Metal 2	Ba16156	LA Bomba 2	Ba16245	b# Tekno
Ba16068	RO Metal 3	Ba16157	LA Bomba 3		
Ba16069	RO Rocker 1	Ba16158	LA Bomba 4		
Ba16070	RO Rocker 2	Ba16159	LA Bomba 5		
Ba16071	RO Rocker 3	Ba16160	LA Bomba 6		
Ba16072	RO Rocker 4	Ba16161	LA Bomba 7		
Ba16073	RO Rocker 5	Ba16162	LA Calient 1		
Ba16074	RO Rocker 6	Ba16163	LA Calient 2		
Ba16075	RO Rockin' 1	Ba16164	LA Calient 3		
Ba16076	RO Rockin' 2	Ba16165	LA Calypso 1		
Ba16077	RB Esteem 1	Ba16166	LA Calypso 2		
Ba16078	RB Esteem 2	Ba16167	LA Calypso 3		
Ba16079	RB Esteem 3	Ba16168	LA Calypso 4		
Ba16080	RB Funkie 1	Ba16169	LA Calypso 5		
Ba16081	RB Funkie 2	Ba16170	LA Calypso 6		
Ba16082	RB Funkie 3	Ba16171	LA Espagnol		
Ba16083	RB Funkie 4	Ba16172	LA Mambo		
Ba16084	RB Funkie 5	Ba16173	LA Merengu 1		
Ba16085	RB Funkier 1	Ba16174	LA Merengu 2		
Ba16086	RB Funkier 2	Ba16175	LA Merengu 3		
Ba16087	RB Funkier 3	Ba16176	LA Merengu 4		
Ba16088	RB Funkier 4	Ba16177	LA Merengu 5		
Ba16089	RB Funkier 5	Ba16178	LA Merengu 6		

8beat Bass -a					
Phrase No.	Phrase Name	Phrase No.	Phrase Name	Phrase No.	Phrase Name
Ba08001	DA Acid	Ba08077	RO Hard 2	Ba08153	JA Fission
Ba08002	DA Disco 1	Ba08078	RO Harder 1	Ba08154	JA Maiden 1
Ba08003	DA Disco 2	Ba08079	RO Harder 2	Ba08155	JA Maiden 2
Ba08004	DA Disco 3	Ba08080	RO Harder 3	Ba08156	JA Maiden 3
Ba08005	DA Much	Ba08081	RO Hardest 1	Ba08157	JA Maiden 4
Ba08006	PO Ethno 1	Ba08082	RO Hardest 2	Ba08158	JA Maiden 5
Ba08007	PO Ethno 2	Ba08083	RO Hardest 3	Ba08159	JA Maiden 6
Ba08008	PO Ethno 3	Ba08084	RO Heavy 1	Ba08160	JA Swing
Ba08009	PO Fly	Ba08085	RO Heavy 2	Ba08161	JA Walkin 1
Ba08010	PO Gated 1	Ba08086	RO Jammin' 1	Ba08162	JA Walkin 2
Ba08011	PO Gated 2	Ba08087	RO Jammin' 2	Ba08163	JA Walkin 3
Ba08012	PO Gated 3	Ba08088	RO Rockaby 1	Ba08164	JA Walkin 4
Ba08013	PO Gated 4	Ba08089	RO Rockaby 2	Ba08165	JA Walkin 5
Ba08014	PO Gated 5	Ba08090	RO Roll	Ba08166	JA Walkin 6
Ba08015	PO Gated 6	Ba08091	RO Sharon	Ba08167	JA Walkin 7
Ba08016	PO Gated 7	Ba08092	RO Surfin' 1	Ba08168	JA Walkin 8
Ba08017	PO Gated 8	Ba08093	RO Surfin' 2	Ba08169	JA Walkin 9
Ba08018	PO Gated 9	Ba08094	RO Surfin' 3	Ba08170	JA Walkin 10
Ba08019	PO Gated 10	Ba08095	RO Surfin' 4	Ba08171	JA Walkin 11
Ba08020	PO Gated 11	Ba08096	RO Surfin' 5	Ba08172	JA Walkin 12
Ba08021	PO Hustler 1	Ba08097	RO Surfin' 6	Ba08173	JA Walkin 13
Ba08022	PO Hustler 2	Ba08098	RO Surfin' 7	Ba08174	LA Bossa 1
Ba08023	PO Hustler 3	Ba08099	RO Surfin' 8	Ba08175	LA Bossa 2
Ba08024	PO Hustler 4	Ba08100	RO Surfin' 9	Ba08176	LA Bossa 3
Ba08025	PO Hustler 5	Ba08101	RO Surfin' 10	Ba08177	LA Bossa 4
Ba08026	PO Hustler 6	Ba08102	RO TheKing 1	Ba08178	LA Cha Cha 1
Ba08027	PO Hustler 7	Ba08103	RO TheKing 2	Ba08179	LA Cha Cha 2
Ba08028	PO Hustler 8	Ba08104	CW BothKinds	Ba08180	LA Cha Cha 3
Ba08029	PO Hustler 9	Ba08105	CW Nash 1	Ba08181	LA Cha Cha 4
Ba08030	PO Hustler10	Ba08106	CW Nash 2	Ba08182	LA Cumbia 1
Ba08031	PO Hustler11	Ba08107	CW Nash 3	Ba08183	LA Cumbia 2
Ba08032	PO Hustler12	Ba08108	CW Nash 4	Ba08184	LA Cumbia 3
Ba08033	PO Hustler13	Ba08109	CW Nash 5	Ba08185	LA Espagnol
Ba08034	PO Look For	Ba08110	CW Nash 6	Ba08186	LA Mambo 1
Ba08035	PO Love 1	Ba08111	CW Nash 7	Ba08187	LA Mambo 2
Ba08036	PO Love 2	Ba08112	CW Nash 8	Ba08188	LA Mambo 3
Ba08037	PO Love 3	Ba08113	RE Eastssid 1	Ba08189	LA Mambo 4
Ba08038	PO Love 4	Ba08114	RE Eastssid 2	Ba08190	LA Rhumba 1
Ba08039	PO Push 1	Ba08115	RE Motor 1	Ba08191	LA Rhumba 2
Ba08040	PO Push 2	Ba08116	RE Motor 2	Ba08192	LA Rhumba 3
Ba08041	PO Push 3	Ba08117	RE Motor 3	Ba08193	LA Rhumba 4
Ba08042	PO Push 4	Ba08118	RE Motor 4	Ba08194	LA Rhumba 5
Ba08043	PO Push 5	Ba08119	RE Motor 5	Ba08195	LA Rhumba 6
Ba08044	PO Push 6	Ba08120	RE Motor 6	Ba08196	LA Rhumba 7
Ba08045	PO Push 7	Ba08121	RE Motor 7	Ba08197	LA Rhumba 8
Ba08046	PO Push 8	Ba08122	RE Motor 8	Ba08198	LA Rhumba 9
Ba08047	PO Push 9	Ba08123	RE R&B 1	Ba08199	LA Rhumba 10
Ba08048	PO Push 10	Ba08124	RE R&B 2	Ba08200	LA Rhumba 11
Ba08049	PO Push 11	Ba08125	RE SlowJam 1	Ba08201	LA Rhumba 12
Ba08050	PO Push 12	Ba08126	RE SlowJam 2	Ba08202	LA Rhumba 13
Ba08051	PO Push 13	Ba08127	RE SlowJam 3	Ba08203	LA Rhumba 14
Ba08052	PO Push 14	Ba08128	RE SlowJam 4	Ba08204	LA Salsa 1
Ba08053	PO Push 15	Ba08129	RE SlowJam 5	Ba08205	LA Salsa 2
Ba08054	PO Shuvlin 1	Ba08130	RE SlowJam 6	Ba08206	LA Ska
Ba08055	PO Shuvlin 2	Ba08131	RE SlowJam 7	Ba08207	WO Ju-Ju 1
Ba08056	PO Shuvlin 3	Ba08132	RE SlowJam 8	Ba08208	WO Ju-Ju 2
Ba08057	PO Soupy 1	Ba08133	RE SlowJam 9	Ba08209	WO Ju-Ju 3
Ba08058	PO Soupy 2	Ba08134	RE SloJam 10	Ba08210	WO Ju-Ju 4
Ba08059	PO Soupy 3	Ba08135	RE SloJam 11	Ba08211	WO Ju-Ju 5
Ba08060	PO Soupy 4	Ba08136	RE SloJam 12	Ba08212	WO New Age 1
Ba08061	PO Soupy 5	Ba08137	RE SloJam 13	Ba08213	WO New Age 2
Ba08062	PO Soupy 6	Ba08138	RE SloJam 14		
Ba08063	PO Soupy 7	Ba08139	RE SloJam 15		
Ba08064	PO Tense	Ba08140	RE SloJam 16		
Ba08065	PO Uzure	Ba08141	RE SloJam 17		
Ba08066	PO Vision	Ba08142	RE SloJam 18		
Ba08067	PO Water	Ba08143	RE SloJam 19		
Ba08068	RO 2Z Top	Ba08144	RE SloJam 20		
Ba08069	RO Anthem	Ba08145	RE SloJam 21		
Ba08070	RO Boogie 1	Ba08146	RE SloJam 22		
Ba08071	RO Boogie 2	Ba08147	RE SloJam 23		
Ba08072	RO Boogie 3	Ba08148	RE Soul 1		
Ba08073	RO Boogie 4	Ba08149	RE Soul 2		
Ba08074	RO Boogie 5	Ba08150	RE Soul 3		
Ba08075	RO Boogie 6	Ba08151	RE Soul 4		
Ba08076	RO Hard 1	Ba08152	RE Soul 5		

3/4beat Drum -a			
Phrase No.	Phrase Name	Phrase No.	Phrase Name
Ba34001	CW Tenasee 1	Ba34009	JA Vince 5
Ba34002	CW Tenasee 2	Ba34010	JA Vince 6
Ba34003	CW Tenasee 3	Ba34011	RO Harder
Ba34004	CW Tenasee 4		
Ba34005	JA Vince 1		
Ba34006	JA Vince 2		
Ba34007	JA Vince 3		
Ba34008	JA Vince 4		

Phrase List (Bass-b:General)

16beat Bass-b(General)	
Phrase No.	Phrase Name
Bb16001	GE Ballad 1
Bb16002	GE Ballad 2
Bb16003	GE Ballad 3
Bb16004	GE Ballade 1
Bb16005	GE Ballade 2
Bb16006	GE Ballot 1
Bb16007	GE Ballot 2
Bb16008	GE Ballot 3
Bb16009	GE Ballot 4
Bb16010	GE Ballot 5
Bb16011	GE Ballot 6
Bb16012	GE Ballot 7
Bb16013	GE Ballot 8
Bb16014	GE Ballot 9
Bb16015	GE Bassics 1
Bb16016	GE Bassics 2
Bb16017	GE Bassics 3
Bb16018	GE Bassics 4
Bb16019	GE Bassics 5
Bb16020	GE Bassics 6
Bb16021	GE Bassics 7
Bb16022	GE Boy 1
Bb16023	GE Boy 2
Bb16024	GE Boy 3
Bb16025	GE Boy 4
Bb16026	GE Bread 1
Bb16027	GE Bread 2
Bb16028	GE Bread 3
Bb16029	GE Bread 4
Bb16030	GE Bread 5
Bb16031	GE Bread 6
Bb16032	GE Bread 7
Bb16033	GE Bread 8
Bb16034	GE Bread 9
Bb16035	GE Bread 10
Bb16036	GE Bread 11
Bb16037	GE Bread 12
Bb16038	GE Bread 13
Bb16039	GE Bread 14
Bb16040	GE Bread 15
Bb16041	GE Bread 16
Bb16042	GE Butter 1
Bb16043	GE Butter 2
Bb16044	GE Hustlin 1
Bb16045	GE Hustlin 2
Bb16046	GE Hustlin 3
Bb16047	GE Hustlin 4
Bb16048	GE Hustlin 5
Bb16049	GE Primer 1
Bb16050	GE Primer 2
Bb16051	GE Primer 3
Bb16052	GE Shtuff
Bb16053	GE Vanilla 1
Bb16054	GE Vanilla 2

8beat Bass-b(General)			
Phrase No.	Phrase Name	Phrase No.	Phrase Name
Bb08001	GE 68Shufl 1	Bb08119	GE Free 9
Bb08002	GE 68Shufl 2	Bb08120	GE Free 10
Bb08003	GE 68Shufl 3	Bb08121	GE Free 11
Bb08004	GE Ballad 1	Bb08122	GE Free 12
Bb08005	GE Ballad 2	Bb08123	GE Light 1
Bb08006	GE Ballad 3	Bb08124	GE Light 2
Bb08007	GE Ballad 4	Bb08125	GE Light 3
Bb08008	GE Ballad 5	Bb08126	GE Light 4
Bb08009	GE Ballad 6	Bb08127	GE Light 5
Bb08010	GE Ballad 7	Bb08128	GE Light 6
Bb08011	GE Ballad 8	Bb08129	GE Light 7
Bb08012	GE Ballad 9	Bb08130	GE Lighter 1
Bb08013	GE Ballad 10	Bb08131	GE Lighter 2
Bb08014	GE Ballad 11	Bb08132	GE Lighter 3
Bb08015	GE Ballad 12	Bb08133	GE Lighter 4
Bb08016	GE Ballad 13	Bb08134	GE Lighter 5
Bb08017	GE Ballad 14	Bb08135	GE Lighter 6
Bb08018	GE Ballad 15	Bb08136	GE Litest 1
Bb08019	GE Ballad 16	Bb08137	GE Litest 2
Bb08020	GE Ballade 1	Bb08138	GE Litest 3
Bb08021	GE Ballade 2	Bb08139	GE Litest 4
Bb08022	GE Ballade 3	Bb08140	GE Pushed 1
Bb08023	GE Ballade 4	Bb08141	GE Pushed 2
Bb08024	GE Ballade 5	Bb08142	GE Pushed 3
Bb08025	GE Ballade 6	Bb08143	GE Pushed 4
Bb08026	GE Ballade 7	Bb08144	GE Pushed 5
Bb08027	GE Ballade 8	Bb08145	GE Pushed 6
Bb08028	GE BalladG 1	Bb08146	GE Pushed 7
Bb08029	GE BalladG 2	Bb08147	GE Pushed 8
Bb08030	GE BalladG 3	Bb08148	GE Pushed 9
Bb08031	GE BalladP 1	Bb08149	GE Pushed 10
Bb08032	GE BalladP 2	Bb08150	GE Pushed 11
Bb08033	GE BalladP 3	Bb08151	GE Pushed 12
Bb08034	GE BalladP 4	Bb08152	GE Shuffle 1
Bb08035	GE BalladP 5	Bb08153	GE Shuffle 2
Bb08036	GE BalladP 6	Bb08154	GE Shuffle 3
Bb08037	GE BalladP 7	Bb08155	GE Shuffle 4
Bb08038	GE BalldEP 1	Bb08156	GE Shuffle 5
Bb08039	GE BalldEP 2	Bb08157	GE Shuffle 6
Bb08040	GE BalldEP 3	Bb08158	GE Shuffle 7
Bb08083	GE Bumpin' 9	Bb08159	GE Shuffle 8
Bb08084	GE Bumpin 10	Bb08160	GE Shuffle 9
Bb08085	GE Bumpin 11	Bb08161	GE Shuffl 10
Bb08086	GE Bumpin 12	Bb08162	GE Shuffl 11
Bb08087	GE Bumpin 13	Bb08163	GE Shuffl 12
Bb08088	GE Bumpin 14	Bb08164	GE Shuffled
Bb08089	GE Bumpin 15	Bb08165	GE Shufflin 1
Bb08090	GE Bumpin 16	Bb08166	GE Shufflin 2
Bb08091	GE Bumpin 17	Bb08167	GE Shufflin 3
Bb08092	GE Bumpin 18	Bb08168	GE Shufflin 4
Bb08093	GE Butter 1	Bb08169	GE Shufflin 5
Bb08094	GE Butter 2	Bb08170	GE Shufflin 6
Bb08095	GE Butter 3		
Bb08096	GE Butter 4		
Bb08097	GE Butter 5		
Bb08098	GE Butter 6		
Bb08099	GE Butter 7		
Bb08100	GE Butter 8		
Bb08101	GE Butter 9		
Bb08102	GE Butter 10		
Bb08103	GE Butter 11		
Bb08104	GE Butter 12		
Bb08105	GE Butter 13		
Bb08106	GE Butter 14		
Bb08107	GE Butter 15		
Bb08108	GE Butter 16		
Bb08109	GE Butter 17		
Bb08110	GE Butter 18		
Bb08111	GE Free 1		
Bb08112	GE Free 2		
Bb08113	GE Free 3		
Bb08114	GE Free 4		
Bb08115	GE Free 5		
Bb08116	GE Free 6		
Bb08117	GE Free 7		
Bb08118	GE Free 8		

3/4beat Bass-b(General)	
Phrase No.	Phrase Name
Bb34001	GE Ballad 1
Bb34002	GE Ballad 2
Bb34003	GE Pop 1
Bb34004	GE Pop 2
Bb34005	GE Pop 3
Bb34006	GE Pop 4
Bb34007	GE Pop 5
Bb34008	GE Pop 6
Bb34009	GE Pop 7
Bb34010	GE Pop 8
Bb34011	GE Pop 9
Bb34012	GE Pop 10
Bb34013	GE Pop 11
Bb34014	GE Pop 12
Bb34015	GE Pop 13
Bb34016	GE Pop 14
Bb34017	GE Pop 15
Bb34018	GE Pop 16
Bb34019	GE Pop 17
Bb34020	GE Pop 18
Bb34021	GE Pop 19
Bb34022	GE Pop 20
Bb34023	GE Pop 21
Bb34024	GE Pop 22
Bb34025	GE Pop 23
Bb34026	GE Pop 24
Bb34027	GE Shuffled

Phrase List (Guitar Arpeggio/Guitar Riff)

16beat Guitar Arpeggio	
Phrase No.	Phrase Name
GA16001	PO Soupy
GA16002	RB Funkie 1
GA16003	RB Funkie 2
GA16004	JA Fission

8beat Guitar Arpeggio	
Phrase No.	Phrase Name
GA08001	PO Mirage
GA08002	PO Soupy
GA08003	RO Roll
GA08004	CW Ballad 1
GA08005	CW Ballad 2
GA08006	CW Ballad 3
GA08007	LA Bossa 1
GA08008	LA Bossa 2
GA08009	WO New Age
GA08010	GE BalladG 1
GA08011	GE BalladG 2
GA08012	GE BalladG 3
GA08013	GE BalladG 4
GA08014	GE BalladG 5
GA08015	GE BalladG 6
GA08016	GE BalladG 7
GA08017	GE BalladG 8
GA08018	GE BalladG 9
GA08019	GE Bumpin'
GA08020	GE Free 1
GA08021	GE Free 2
GA08022	GE Free 3
GA08023	GE Light 1
GA08024	GE Light 2
GA08025	GE Light 3
GA08026	GE Pushed 1
GA08027	GE Pushed 2
GA08028	GE Shuffle
GA08029	GE Shuffled 1
GA08030	GE Shuffled 2
GA08031	GE Shuffled 3
GA08032	GE Shuffled 4
GA08033	GE Shufflin 1
GA08034	GE Shufflin 2

3/4beat Guitar Arpeggio	
Phrase No.	Phrase Name
GA34001	CW Tenasee 1
GA34002	CW Tenasee 2
GA34003	CW Tenasee 3
GA34004	GE Swaltz

16beat Guitar Riff	
Phrase No.	Phrase Name
GR16001	DA Disco
GR16002	DA DisFunk
GR16003	DA DisGrl
GR16004	DA Funkiest
GR16005	DA Hip
GR16006	PO Funkyst 1
GR16007	PO Funkyst 2
GR16008	PO Funkyst 3
GR16009	PO Funkyst 4
GR16010	PO Hustler 1
GR16011	PO Hustler 2
GR16012	PO LookFor 1
GR16013	PO LookFor 2
GR16014	PO Sledge 1
GR16015	PO Sledge 2
GR16016	PO Soupy 1
GR16017	PO Soupy 2
GR16018	PO Tiger
GR16019	RO Dirge 1
GR16020	RO Dirge 2
GR16021	RO Funkyst 1
GR16022	RO Funkyst 2
GR16023	RO Funkyst 3
GR16024	RO Funkyst 4
GR16025	RO Heavy
GR16026	RO Rocker 1
GR16027	RO Rocker 2
GR16028	RB Funkier 1
GR16029	RB Funkier 2
GR16030	RB Funkier 3
GR16031	RB Funkyst 1
GR16032	RB Funkyst 2
GR16033	RB Slow Jam
GR16034	JA Fission
GR16035	JA JazFunk
GR16036	JA Waaou
GR16037	WO Soweto 1
GR16038	WO Soweto 2
GR16039	b# Funked
GR16040	b# Funkyst 1
GR16041	b# Funkyst 2
GR16042	GE Shtuff

8beat Guitar Riff	
Phrase No.	Phrase Name
GR08001	PO Mine
GR08002	PO Tense
GR08003	PO Truckin 1
GR08004	PO Truckin 2
GR08005	PO Truckin 3
GR08006	PO Truckin 4
GR08007	RO Boogie 1
GR08008	RO Boogie 2
GR08009	RO Boogie 3
GR08010	RO Boogie 4
GR08011	RO Heavy
GR08012	RO Roll
GR08013	RO Surfin' 1
GR08014	RO Surfin' 2
GR08015	RO Surfin' 3
GR08016	RO Surfin' 4
GR08017	RO Surfin' 5
GR08018	RO Surfin' 6
GR08019	RO Surfin' 7
GR08020	RO Surfin' 8
GR08021	CW Ville 1
GR08022	CW Ville 2
GR08023	CW Ville 3
GR08024	CW Ville 4
GR08025	CW Ville 5
GR08026	CW Ville 6
GR08027	CW Ville 7
GR08028	CW Ville 8
GR08029	JA Compin' 1
GR08030	JA Compin' 2
GR08031	JA Compin' 3
GR08032	b# Jazzy
GR08033	b# Slide
GR08034	GE Butter
GR08035	GE Shuffle

3/4beat Guitar Riff	
Phrase No.	Phrase Name
GR34001	b# Night 1
GR34002	b# Night 2
GR34003	GE Ride 1
GR34004	GE Ride 2

16beat Keyboard Chord	
Phrase No.	Phrase Name
KC16001	DA Come On
KC16002	DA DisFunk 1
KC16003	DA DisFunk 2
KC16004	DA DisFunk 3
KC16005	DA DisFunk 4
KC16006	DA EuroBt. 1
KC16007	DA EuroBt. 2
KC16008	DA EuroBt. 3
KC16009	DA Hop 1
KC16010	DA Hop 2
KC16011	DA Hop 3
KC16012	DA Hop 4
KC16013	DA Keys 1
KC16014	DA Keys 2
KC16015	DA Keys 3
KC16016	DA Keys 4
KC16017	DA Keys 5
KC16018	DA Keys 6
KC16019	DA Keys 7
KC16020	DA Keys 8
KC16021	DA Keys 9
KC16022	DA Rap 1
KC16023	DA Rap 2
KC16024	DA Rap 3
KC16025	DA Rap 4
KC16026	DA Rave 1
KC16027	DA Rave 2
KC16028	DA Rave 3
KC16029	DA Tekno
KC16030	RB Funkyst 1
KC16031	RB Funkyst 2
KC16032	RB Funkiest
KC16033	RB FunkBay 1
KC16034	RB FunkBay 2
KC16035	RB FunkBay 3
KC16036	RB FunkBay 4
KC16037	RB FunkBay 5
KC16038	RB FunkBay 6
KC16039	RB FunkBay 7
KC16040	RB FunkBay 8
KC16041	RB FunkBay 9
KC16042	RB FunkBa 10
KC16043	RB FunkBa 11
KC16044	RB R&B 1
KC16045	RB R&B 2
KC16046	RB R&B 3
KC16047	RB R&B 4
KC16048	JA Fission 1
KC16049	JA Fission 2
KC16050	JA Fission 3
KC16051	LA Bossa
KC16052	LA Caliente
KC16053	LA Samba 1
KC16054	LA Samba 2
KC16055	LA Samba 3
KC16056	LA Samba 4
KC16057	LA Samba 5
KC16058	LA Samba 6
KC16059	LA Son 1
KC16060	LA Son 2
KC16061	LA Son 3
KC16062	LA Son 4
KC16063	WO Reggae 1
KC16064	WO Reggae 2
KC16065	WO Reggae 3
KC16066	GE Boy
KC16067	GE Free
KC16068	GE Primer 1
KC16069	GE Primer 2
KC16070	GE Shtuff

8beat Keyboard Chord	
Phrase No.	Phrase Name
KC08001	DA Disco 1
KC08002	DA Disco 2
KC08003	PO Ethno
KC08004	PO Gated
KC08005	PO Love
KC08006	PO Suhwing 1
KC08007	PO Suhwing 2
KC08008	RO Dirge
KC08009	RO Harder
KC08010	RO Hardest
KC08011	RO Rockin'
KC08012	RO SirFrock
KC08013	CW Ville 1
KC08014	CW Ville 2
KC08015	CW Ville 3
KC08016	CW Ville 4
KC08017	CW Ville 5
KC08018	CW Ville 6
KC08019	CW Ville 7
KC08020	CW Ville 8
KC08021	RB R&B 1
KC08022	RB R&B 2
KC08023	JA Compin' 1
KC08024	JA Compin' 2
KC08025	JA Compin' 3
KC08026	JA Compin' 4
KC08027	JA Compin' 5
KC08028	JA Maiden 1
KC08029	JA Maiden 2
KC08030	JA Maiden 3
KC08031	JA Maiden 4
KC08032	LA Mambo 1
KC08033	LA Mambo 2
KC08034	LA Mambo 3
KC08035	LA Mambo 4
KC08036	LA Rhumba
KC08037	LA Samba
KC08038	LA Ska
KC08039	GE BalladP 1
KC08040	GE BalladP 2
KC08041	GE BalladP 3
KC08042	GE BalladP 4
KC08043	GE BalladP 5
KC08044	GE BalladP 6
KC08045	GE BalladP 7
KC08046	GE BalladP 8
KC08047	GE Boy
KC08048	GE Bread 1
KC08049	GE Bread 2
KC08050	GE Bread 3
KC08051	GE Bread 4
KC08052	GE Bumpin' 1
KC08053	GE Bumpin' 2
KC08054	GE Bumpin' 3
KC08055	GE Bumpin' 4
KC08056	GE Bumpin' 5
KC08057	GE Bumpin' 6
KC08058	GE Bumpin' 7
KC08059	GE Butter 1
KC08060	GE Butter 2
KC08061	GE Free 1
KC08062	GE Free 2
KC08063	GE Free 3
KC08064	GE Free 4
KC08065	GE Free 5
KC08066	GE Free 6
KC08067	GE Free 7
KC08068	GE Lighter
KC08069	GE Litest 1
KC08070	GE Litest 2
KC08071	GE Primer
KC08072	GE Shuff
KC08073	GE Shuffle 1
KC08074	GE Shuffle 2

3/4beat Keyboard Chord	
Phrase No.	Phrase Name
KC34001	RO Ballad
KC34002	CW Tenasee 1
KC34003	CW Tenasee 2
KC34004	CW Tenasee 3
KC34005	CW Tenasee 4
KC34006	CW Tenasee 5
KC34007	CW Tenasee 6
KC34008	JA Vince 1
KC34009	JA Vince 2
KC34010	GE Ballad
KC34011	GE Walt's 2
KC34012	GE Walt's 3

Phrase List (Keyboard Arpeggio/Keyboard Riff)

16beat Keyboard Arpeggio	
Phrase No.	Phrase Name
KA16001	DA ComeOn! 1
KA16002	DA ComeOn! 2
KA16003	DA EuroBt. 1
KA16004	DA EuroBt. 2
KA16005	DA EuroBt. 3
KA16006	DA EuroBt. 4
KA16007	DA Sequenc 1
KA16008	DA Sequenc 2
KA16009	DA Sequenc 3
KA16010	DA Sequenc 4
KA16011	DA Sequenc 5
KA16012	DA Sequenc 6
KA16013	DA Sequenc 7
KA16014	DA Sequenc 8
KA16015	DA Sequenc 9
KA16016	DA Sequen 10
KA16017	DA Sequen 11
KA16018	DA Sequen 12
KA16019	DA Sequen 13
KA16020	DA Tekno 1
KA16021	DA Tekno 2
KA16022	PO Cherry
KA16023	PO Ethno
KA16024	PO Wand
KA16025	RO Hardest 1
KA16026	RO Hardest 2
KA16027	LA Soca 1
KA16028	LA Soca 2
KA16029	LA Soca 3
KA16030	LA Soca 4

8beat Keyboard Arpeggio	
Phrase No.	Phrase Name
KA08001	DA Sequenc 1
KA08002	DA Sequenc 2
KA08003	RO Sequenc 3
KA08004	RO Sequenc 4
KA08005	LA Rhumba 1
KA08006	LA Rhumba 2
KA08007	LA Rhumba 3
KA08008	LA Rhumba 4
KA08009	LA Rhumba 5
KA08010	LA Rhumba 6
KA08011	LA Rhumba 7
KA08012	LA Rhumba 8
KA08013	LA Rhumba 9
KA08014	GE BalladP 1
KA08015	GE BalladP 2
KA08016	GE BalladP 3
KA08017	GE BalladP 4
KA08018	GE BalladP 5
KA08019	GE BalladP 6
KA08020	GE BalladP 7
KA08021	GE BalladP 8
KA08022	GE BalladP 9
KA08023	GE BalladP 10
KA08024	GE BalladP 11
KA08025	GE BalladP 12
KA08026	GE Harp 1
KA08027	GE Harp 2
KA08028	GE Harp 3
KA08029	GE Harp 4
KA08030	GE Harp 5
KA08031	GE Harp 6

3/4beat Keyboard Arpeggio	
Phrase No.	Phrase Name
KA34001	RO Ballad 1
KA34002	GE Ballad 2
KA34003	GE Ballad 3

16beat Keyboard Riff			
Phrase No.	Phrase Name	Phrase No.	Phrase Name
KR16001	DA Come On	KR16057	LA Montuno22
KR16002	DA Disco	KR16058	LA Tejano 1
KR16003	DA Hop	KR16059	LA Tejano 2
KR16004	DA Rave	KR16060	LA Tejano 3
KR16005	DA Sequenc 1	KR16061	LA Tejano 4
KR16006	DA Sequenc 2	KR16062	LA Tejano 5
KR16007	DA Sequenc 3	KR16063	LA Tejano 6
KR16008	DA Sequenc 4	KR16064	b# AcidPiano
KR16009	DA Sequenc 5	KR16065	b# Clap
KR16010	PO Ethno	KR16066	b# Cutting 1
KR16011	RO Dirge 1	KR16067	b# Cutting 2
KR16012	RO Dirge 2	KR16068	b# Cutting 3
KR16013	RO Dirge 3	KR16069	b# Cutting 4
KR16014	RB Funkyst 1	KR16070	b# Cutting 5
KR16015	RB Funkyst 2	KR16071	b# Funkiest
KR16016	RB Funk_Bay	KR16072	b# Ground
KR16017	RB Nawlins 1	KR16073	b# HousPiano
KR16018	RB Nawlins 2	KR16074	b# Rollin'
KR16019	RB Nawlins 3	KR16075	GE Boy 1
KR16020	RB Nawlins 4	KR16076	GE Boy 2
KR16021	RB Ronnie 1	KR16077	GE Boy 3
KR16022	RB Ronnie 2	KR16078	GE Primer
KR16023	RB Ronnie 3	KR16079	GE Shtuff
KR16024	RB Ronnie 4		
KR16025	JA AfroJaz 1		
KR16026	JA AfroJaz 2		
KR16027	JA AfroJaz 3		
KR16028	JA AfroJaz 4		
KR16029	JA Fission 1		
KR16030	JA Fission 2		
KR16031	LA Calient 1		
KR16032	LA Calient 2		
KR16033	LA Calient 3		
KR16034	LA Calient 4		
KR16035	LA Montuno		
KR16036	LA Montuno 1		
KR16037	LA Montuno 2		
KR16038	LA Montuno 3		
KR16039	LA Montuno 4		
KR16040	LA Montuno 5		
KR16041	LA Montuno 6		
KR16042	LA Montuno 7		
KR16043	LA Montuno 8		
KR16044	LA Montuno 9		
KR16045	LA Montuno10		
KR16046	LA Montuno11		
KR16047	LA Montuno12		
KR16048	LA Montuno13		
KR16049	LA Montuno14		
KR16050	LA Montuno15		
KR16051	LA Montuno16		
KR16052	LA Montuno17		
KR16053	LA Montuno18		
KR16054	LA Montuno19		
KR16055	LA Montuno20		
KR16056	LA Montuno21		

8beat Keyboard Riff	
Phrase No.	Phrase Name
KR08001	DA Sequencer
KR08002	PO Ethno 1
KR08003	PO Ethno 2
KR08004	PO Ethno 3
KR08005	PO Ethno 4
KR08006	PO Ethno 5
KR08007	PO Ethno 6
KR08008	RO Harder
KR08009	RO Roll
KR08010	CW Ville
KR08011	RB R&B 1
KR08012	RB R&B 2
KR08013	JA Compin' 1
KR08014	JA Compin' 2
KR08015	JA Maiden
KR08016	LA Montuno 1
KR08017	LA Montuno 2
KR08018	WO New Age 1
KR08019	WO New Age 2
KR08020	WO Zydeco 1
KR08021	WO Zydeco 2
KR08022	WO Zydeco 3
KR08023	WO Zydeco 4
KR08024	WO Zydeco 5
KR08025	b# AcidJazz

3/4beat Keyboard Riff	
Phrase No.	Phrase Name
KR34001	b# Choppin
KR34002	b# Tonk
KR34003	GE Walt's 1
KR34004	GE Walt's 2

Phrase List (Pad/Brass/Sound Effect)

16beat Pad	
Phrase No.	Phrase Name
PD16001	GE 2 Voice 1
PD16002	GE 2 Voice 2
PD16003	GE 2 Voice 3
PD16004	GE 3 Voice 1
PD16005	GE 3 Voice 2
PD16006	GE 3 Voice 3
PD16007	GE 4 Voice 1
PD16008	GE 4 Voice 2
PD16009	GE 4 Voice 3
PD16010	GE 4 Voice 4
PD16011	GE 5 Voice 1
PD16012	GE 5 Voice 2
PD16013	GE 5 Voice 3
PD16014	GE 5 Voice 4
PD16015	GE 5 Voice 5
PD16016	GE Hi 5th 1
PD16017	GE Hi 5th 2
PD16018	GE Hi 5th 3
PD16019	GE Hi Oct 1
PD16020	GE Hi Oct 2
PD16021	GE Hi Oct 3
PD16022	GE Hi Oct 4
PD16023	GE Hi Pad 1
PD16024	GE Hi Pad 2
PD16025	GE Hi Pad 3
PD16026	GE Hi Pad 4
PD16027	GE Low Pad

8beat Pad	
Phrase No.	Phrase Name
PD08001	GE 2 Voice 1
PD08002	GE 2 Voice 2
PD08003	GE 2 Voice 3
PD08004	GE 3 Voice 1
PD08005	GE 3 Voice 2
PD08006	GE 3 Voice 3
PD08007	GE 4 Voice 1
PD08008	GE 4 Voice 2
PD08009	GE 4 Voice 3
PD08010	GE 4 Voice 4
PD08011	GE 5 Voice 1
PD08012	GE 5 Voice 2
PD08013	GE 5 Voice 3
PD08014	GE 5 Voice 4
PD08015	GE 5 Voice 5
PD08016	GE Hi 5th 1
PD08017	GE Hi 5th 2
PD08018	GE Hi 5th 3
PD08019	GE Hi Oct 1
PD08020	GE Hi Oct 2
PD08021	GE Hi Oct 3
PD08022	GE Hi Oct 4
PD08023	GE Hi Pad 1
PD08024	GE Hi Pad 2
PD08025	GE Hi Pad 3
PD08026	GE Hi Pad 4
PD08027	GE Low Pad

3/4beat Pad	
Phrase No.	Phrase Name
PD34001	GE 2 Voice 1
PD34002	GE 2 Voice 2
PD34003	GE 2 Voice 3
PD34004	GE 3 Voice 1
PD34005	GE 3 Voice 2
PD34006	GE 3 Voice 3
PD34007	GE 4 Voice 1
PD34008	GE 4 Voice 2
PD34009	GE 4 Voice 3
PD34010	GE 4 Voice 4
PD34011	GE 5 Voice 1
PD34012	GE 5 Voice 2
PD34013	GE 5 Voice 3
PD34014	GE 5 Voice 4
PD34015	GE 5 Voice 5
PD34016	GE Hi 5th 1
PD34017	GE Hi 5th 2
PD34018	GE Hi 5th 3
PD34019	GE Hi Oct 1
PD34020	GE Hi Oct 2
PD34021	GE Hi Oct 3
PD34022	GE Hi Oct 4
PD34023	GE Hi Pad 1
PD34024	GE Hi Pad 2
PD34025	GE Hi Pad 3
PD34026	GE Hi Pad 4
PD34027	GE Low Pad

16beat Brass	
Phrase No.	Phrase Name
BR16001	RB Funkie 1
BR16002	RB Funkie 2
BR16003	RB Funkie 3
BR16004	RB Funkyst 1
BR16005	RB Funkyst 2
BR16006	RB R&B
BR16007	JA JazFunk 1
BR16008	JA JazFunk 2
BR16009	JA JazFunk 3
BR16010	JA JazFunk 4
BR16011	JA JazFunk 5
BR16012	LA Mambo 1
BR16013	LA Mambo 2
BR16014	LA Mambo 3
BR16015	LA Merengu 1
BR16016	LA Merengu 2
BR16017	LA Merengu 3
BR16018	LA Merengu 4
BR16019	LA Merengu 5
BR16020	LA Salsa 1
BR16021	LA Salsa 2
BR16022	LA Salsa 3
BR16023	LA Salsa 4
BR16024	LA Salsa 5
BR16025	LA Salsa 6
BR16026	LA Salsa 7
BR16027	LA Salsa 8
BR16028	LA Son 1
BR16029	LA Son 2
BR16030	LA Son 3
BR16031	LA Son 4
BR16032	LA Son 5
BR16033	LA Son 6
BR16034	LA Son 7
BR16035	LA Son 8
BR16036	LA Son 9
BR16037	b# AcidTrump

8beat Brass	
Phrase No.	Phrase Name
BR08001	RO Punch
BR08002	RB Motor 1
BR08003	RB Motor 2
BR08004	RB Motor 3
BR08005	RB R&B 1
BR08006	RB R&B 2
BR08007	JA Saxtion 1
BR08008	JA Saxtion 2
BR08009	JA Saxtion 3
BR08010	JA Saxtion 4
BR08011	LA Mambo 1
BR08012	LA Mambo 2
BR08013	LA Mambo 3
BR08014	LA Mambo 4
BR08015	LA Merengu 1
BR08016	LA Merengu 2
BR08017	LA Merengu 3
BR08018	LA Merengu 4
BR08019	b# Hit
BR08020	b# BigEnd
BR08021	GE Shuff

3/4beat Brass	
Phrase No.	Phrase Name
BR34001	GE Widdly 1
BR34002	GE Widdly 2

16beatSound Effect	
Phrase No.	Phrase Name
SE16001	DA Water
SE16002	b# Waaou
SE16003	b# Dream 1
SE16004	b# Dream 2
SE16005	b# Dream 3
SE16006	b# Dream 4

8beat Sound Effect					
Phrase No.	Phrase Name	Phrase No.	Phrase Name	Phrase No.	Phrase Name
SE08001	b# Filter 1	SE08023	GE DoorSlam	SE08045	GE Punch
SE08002	b# Filter 2	SE08024	GE DoorSque	SE08046	GE Rain
SE08003	b# Filter 3	SE08025	GE Explosion	SE08047	GE ScratchNz
SE08004	b# Gliss	SE08026	GE Feed		
SE08005	PO Gated	SE08027	GE Firework	SE08048	GE Scream
SE08006	GE Crowd 1	SE08028	GE Fireworks	SE08049	GE Shore
SE08007	GE Crowd 2	SE08029	GE FootSteps	SE08050	GE Siren
SE08008	GE Bird	SE08030	GE Fret 1	SE08051	GE Starship
SE08009	GE Birds	SE08031	GE Fret 2	SE08052	GE Storm
SE08010	GE BrdsTweet	SE08032	GE Ghost	SE08053	GE Stream
SE08011	GE Bubble	SE08033	GE Ghosts	SE08054	GE Submarine
SE08012	GE Burst	SE08034	GE Gunshot	SE08055	GE TeleDial
SE08013	GE CarCrash	SE08035	GE Haunted	SE08056	GE Telephone1
SE08014	GE CarEngine	SE08036	GE Heart	SE08057	GE Telephone2
SE08015	GE CarPass	SE08037	GE Horreur	SE08058	GE Thunder
SE08016	GE CarStop	SE08038	GE Horse	SE08059	GE Train
SE08017	GE Coaster	SE08039	GE Jetplane	SE08060	GE W.Chime 1
SE08018	GE Copter	SE08040	GE Laser	SE08061	GE W.Chime 2
SE08019	GE Crash	SE08041	GE Laughing	SE08062	GE War
SE08020	GE Cutting 1	SE08042	GE Mach.Gun	SE08063	GE Wind
SE08021	GE Cutting 2	SE08043	GE MadMan		
SE08022	GE Dog	SE08044	GE Maou		

3/4beat Sound Effect	
Phrase No.	Phrase Name
SE34001	b# Wonder

Chord Type List

Chord type

Read

M
major
1, 3, 5

Notes in chord when root is C
1:C 3:E 5:G

Scale degrees
1:Root
2:3rd above root
3:5th above root

M
major
1, 3, 5

M7
major seventh
1, 3, 5, 7

6
sixth
1, 3, 5, 6

7
seventh
1, 3, 5, b7

m
minor
1, b3, 5

m7
minor seventh
1, b3, 5, b7

m6
minor sixth
1, b3, 5, 6

mM7
minor major seventh
1, b3, 5, 7

m7(b5)
minor seventh flattened fifth
1, b3, b5, b7

dim
diminished
1, b3, b5, 6

aug
augmented
1, 3, #5

sus4
suspended fourth
1, 4, 5

Madd9
added ninth
1, 3, 5, 9

M7⁽⁹⁾
major seventh ninth
1, 3, 5, 7, 9

6⁽⁹⁾
six ninth
1, 3, 5, 6, 9

7⁽⁹⁾
seventh ninth
1, 3, 5, b7, 9

madd9
minor added ninth
1, b3, 5, 9

m7⁽⁹⁾
minor seventh ninth
1, b3, 5, b7, 9

m7⁽¹¹⁾
minor seventh added eleventh
1, b3, 5, b7, 11

7^(b5)
seventh flatted fifth
1, 3, b5, b7

7^(#5)
seventh sharp fifth
1, 3, #5, b7

7^(b9)
seventh flat ninth
1, 3, 5, b7, b9

7^(#9)
seventh sharp ninth
1, 3, 5, b7, #9

7⁽¹³⁾
seventh added thirteenth
1, 3, 5, b7, 13

7^(b13)
seventh added flatted thirteenth
1, 3, 5, b7, b13

7sus4
seventh suspended fourth
1, 4, 5, b7

7^(#11)
seventh added sharp eleventh
1, 3, 5, b7, #11

thru

The constituent notes of the original phrase will remain as they are, and will be pitch-converted according to the root and played back.

Groove Template List

No.	Template name	No.	Template name
1	32Quantize	51	16SlipBeat
2	24Quantize	52	16 Swing
3	16Quantize	53	16Swing+24
4	16+24Quant	54	16LiteSwn1
5	12Quantize	55	16LiteSwn2
6	08Quantize	56	16MidSwing
7	08+12Quant	57	16HevySwng
8	06Quantize	58	16FullSwng
9	04Quantize	59	16 Tardy
10	32 Swing	60	16 WayBack
11	24>16+12	61	16 Zydeco
12	24>16+12of	62	12>8+6
13	24 Drunk	63	12>8+6 ofs
14	24 Sambody	64	12 Ashanti
15	24Shfflin1	65	12AshntRev
16	24Shfflin2	66	12 Drunk
17	16AccntDwn	67	12 Ju-Ju
18	16AccentUp	68	12Ju-JuRev
19	16AcidJazz	69	12Shfflin1
20	16 Baion	70	12Shfflin2
21	16BaionBmb	71	12Shfflin3
22	16Batucada	72	08 70Disco
23	16beatRock	73	08AccntDwn
24	16 Bomba	74	08AccentUp
25	16 Caixa	75	08 Charlie
26	16 Cuban	76	08 Drunk
27	16 Drunk	77	08 Late1&3
28	16 Dun-Dun	78	08 Late2
29	16GetFunky	79	08 Late2&3
30	16Guaguanc	80	08 Late2&4
31	16 HipHop	81	08 Late234
32	16 House	82	08 Push 1
33	16 Jungle	83	08 Push 3
34	16 Late 2	84	08 Push1&3
35	16 Late2&4	85	08 Push2&4
36	16 Late234	86	08 Push234
37	16 Later	87	08 PushAll
38	16LatinRck	88	08PushStrg
39	16Overeasy	89	08 Swing
40	16 Push1&3	90	08Swing+12
41	16 Push2&4	91	08 HardBop
42	16 Push234	92	08 Bebop
43	16 PushAll	93	08 UpSwing
44	16 Rap	94	08MidSwing
45	16Repiniqu	95	08SlowSwng
46	16Roadhous	96	08JzBallad
47	16 Robot	97	08 WayBack
48	16Rustaman	98	06>4+3
49	16 Samba	99	06>4+3 ofs
50	16 UpSamba	100	04 Swing

Tone generator parts

(1) TRANSMIT FLOW

```

MIDI <-[]--NOTE ON/OFF          9nH
OUT | | SW2
    | | +[]-PITCH BEND           EnH, BnH,01H-77H(except 20H), DnH
    | | | SW2
    | | +[]-ASSIGNABLE WHEEL     EnH, BnH,01H-77H(except 20H), DnH
    | | | SW3
    | | +[]-FOOT SW             Bn,40H 42H
    | |
    | | ----- SYSTEM EXCLUSIV MESSAGE
    | | <BULK DUMP>
    | | ----- XG SYSTEM        FOH 43H 0nH 4CH bbH bbH aaH aaH aaH
    | |                          ddH....ddH ccH F7H
    | | ----- MULTI EFFECT     FOH 43H 0nH 4CH bbH bbH aaH aaH aaH
    | |                          ddH....ddH ccH F7H
    | | ----- MULTI PART       FOH 43H 0nH 4CH bbH bbH aaH aaH aaH
    | |                          ddH....ddH ccH F7H
    | | ----- DRUM SETUP       FOH 43H 0nH 4CH bbH bbH aaH aaH aaH
    | |                          ddH....ddH ccH F7H
    | | ----- SYSTEM INFORMATION
    | |                          FOH 43H 1nH 4CH bbH bbH aaH aaH aaH
    | |                          ddH....ddH ccH F7H
    | |
    | | ----- <PARAMETER CHANGE>
    | | ----- MIDI MASTER TUNING
    | |                          FOH 43H 1nH 27H 30H 00H 00H mmH 11H ccH F7H
    | | ----- XG SYSTEM        FOH 43H 1nH 4CH aaH aaH aaH ddH....ddH F7H
    | | ----- MULTI EFFECT     FOH 43H 1nH 4CH aaH aaH aaH ddH....ddH F7H
    | | ----- MULTI PART       FOH 43H 1nH 4CH aaH aaH aaH ddH....ddH F7H
    | | ----- DRUM SETUP       FOH 43H 1nH 4CH aaH aaH aaH ddH....ddH F7H
    | |
    | | ----- SYSTEM EXCLUSIV MESSAGE
    | | MIDI MASTER VOLUME       FOH 7FH 7FH 04H 01H 11H mmH F7H
    | | IDENTITY REPLY          FOH 7EH 7FH 06H 02H 43H 00H 41H ddH ddH
    | |                          00H 00H 00H 01H F7H
    | | FEH
    | |
    | | +--- ACTIVE SENSING
  
```

```

SW1 [] MIDI Transmit Channel
      MIDI Transmit Channel is selected by Output MIDI CH.
SW2 [] Assignable Wheel
      selected by the UTILITY parameter WHEEL.
SW3 [] FOOT SWITCH
      selected by the UTILITY parameter FOOT SWITCH.
  
```

(2) RECEIVE FLOW

```

MIDI ->+-----
IN | | SW1
    | | -[]-NOTE OFF           8nH
    | |
    | | +--- NOTE ON/OFF       9nH
    | |
    | | +--- CONTROL CHANGE
    | | BANK SEL MSB           BnH,00H
    | | BANK SEL LSB           BnH,20H
    | | MODULATION             BnH,01H
    | | PORTAMENTO TIME         BnH,05H
    | | DATA ENTRY MSB        BnH,06H
    | | DATA ENTRY LSB        BnH,26H
    | | MAIN VOLUME            BnH,07H
    | | PANPOT                  BnH,0AH
    | | EXPRESSION              BnH,0BH
    | | AC1 CONTROLLER          BnH,10H
    | | SUSTAIN SWITCH          BnH,40H
    | | PORTAMENTO SWITCH       BnH,41H
    | | SOSTENUTO               BnH,42H
    | | SOFT PEDAL              BnH,43H
    | | HARMONIC CONTENT        BnH,47H
    | | RELEASE TIME            BnH,48H
    | | ATTACK TIME             BnH,49H
    | | BRIGHTNESS              BnH,4AH
    | | PORTAMENTO CONTROL      BnH,54H
    | | EFFECT SEND LEVEL 1     BnH,5BH
    | | EFFECT SEND LEVEL 3     BnH,5DH
    | | EFFECT SEND LEVEL 4     BnH,5EH
    | | DATA ENTRY INC         BnH,60H
    | | DATA ENTRY DEC         BnH,61H
    | | NRPN
    | | VIBRATO RATE            BnH,63H,01H,62H,08H,06H,mmH
    | | VIBRATO DEPTH           BnH,63H,01H,62H,09H,06H,mmH
    | | VIBRATO DELAY           BnH,63H,01H,62H,0AH,06H,mmH
    | | FILTER CUTOFF FREQ.     BnH,63H,01H,62H,20H,06H,mmH
    | | FILTER RESONANCE        BnH,63H,01H,62H,21H,06H,mmH
    | | AEG ATTACK TIME         BnH,63H,01H,62H,63H,06H,mmH
    | | AEG DECAY TIME          BnH,63H,01H,62H,64H,06H,mmH
    | | AEG RELEASE TIME        BnH,63H,01H,62H,66H,06H,mmH
    | | DRUM INST
    | | CUTOFF FREQ.            BnH,63H,14H,62H,rrH,06H,mmH
    | | FILTER RESONANCE        BnH,63H,15H,62H,rrH,06H,mmH
    | | AEG ATTACK RATE         BnH,63H,16H,62H,rrH,06H,mmH
    | | AEG DECAY RATE          BnH,63H,17H,62H,rrH,06H,mmH
    | | PITCH COARSE           BnH,63H,18H,62H,rrH,06H,mmH
    | | LEVEL                   BnH,63H,1AH,62H,rrH,06H,mmH
    | | PANPOT                  BnH,63H,1CH,62H,rrH,06H,mmH
    | | REVERB SEND             BnH,63H,1DH,62H,rrH,06H,mmH
  
```

```

| | CHORUS SEND                BnH,63H,1EH,62H,rrH,06H,mmH
| | VARIATION SEND             BnH,63H,1FH,62H,rrH,06H,mmH
| | RPN
| | PITCH BEND SENS.           BnH,64H,00H,65H,00H,06H,mmH
| | FINE TUNING                 BnH,64H,01H,65H,00H,06H,mmH,26H,11H
| | COARSE TUNING              BnH,64H,02H,65H,00H,06H,mmH
| | RPN RESET                   BnH,64H,7FH,65H,7FH
| | ALL SOUND OFF               BnH,78H,00H
| | RESET ALL CONTROLLERS      BnH,79H,00H
| | ALL NOTE OFF                BnH,7BH
| | OMNI MODE OFF               BnH,7CH
| | OMNI MODE ON                BnH,7DH
| | MONO MODE                   BnH,7EH
| | POLY MODE                   BnH,7FH
| |
| | +--- PROGRAM CHANGE         CnH
| |
| | +--- CHANNEL AFTER TOUCH    DnH
| |
| | +--- PITCH BEND CHANGE      EnH
| |
| | ----- SYSTEM EXCLUSIV MESSAGE
| | <BULK DUMP>
| | ----- XG SYSTEM          FOH 43H 0nH 4CH bbH bbH aaH aaH aaH
| |                          ddH....ddH ccH F7H
| | ----- MULTI EFFECT       FOH 43H 0nH 4CH bbH bbH aaH aaH aaH
| |                          ddH....ddH ccH F7H
| | ----- MULTI PART         FOH 43H 0nH 4CH bbH bbH aaH aaH aaH ddH....ddH
| |                          ccH F7H
| | ----- DRUM SETUP         FOH 43H 0nH 4CH bbH bbH aaH aaH aaH ddH....ddH
| |                          ccH F7H
| |
| | ----- <PARAMETER CHANGE>
| | ----- MIDI MASTER TUNING
| |                          FOH 43H 1nH 27H 30H 00H 00H mmH 11H ccH F7H
| | ----- XG SYSTEM          FOH 43H 1nH 4CH aaH aaH aaH ddH....ddH F7H
| | ----- MULTI EFFECT       FOH 43H 1nH 4CH aaH aaH aaH ddH....ddH F7H
| | ----- MULTI PART         FOH 43H 1nH 4CH aaH aaH aaH ddH....ddH F7H
| | ----- DRUM SETUP         FOH 43H 1nH 4CH aaH aaH aaH ddH....ddH F7H
| |
| | ----- <PARAMETER CHANGE>
| | ----- MIDI MASTER TUNING
| |                          FOH 43H 1nH 27H 30H 00H 00H mmH 11H ccH F7H
| | ----- XG SYSTEM ON       FOH 43H 1nH 4CH 00H 00H 7EH 00H F7H
| | ----- XG SYSTEM          FOH 43H 1nH 4CH aaH aaH aaH ddH....ddH F7H
| | ----- MULTI EFFECT       FOH 43H 1nH 4CH aaH aaH aaH ddH....ddH F7H
| | ----- MULTI PART         FOH 43H 1nH 4CH aaH aaH aaH ddH....ddH F7H
| | ----- DRUM SETUP         FOH 43H 1nH 4CH aaH aaH aaH ddH....ddH F7H
| |
| | ----- <BULK DUMP REQUEST>
| | ----- XG SYSTEM          FOH 43H 2nH 4CH aaH aaH aaH F7H
| | ----- MULTI EFFECT       FOH 43H 2nH 4CH aaH aaH aaH F7H
| | ----- MULTI PART         FOH 43H 2nH 4CH aaH aaH aaH F7H
| | ----- DRUM SETUP         FOH 43H 2nH 4CH aaH aaH aaH F7H
| | ----- SYSTEM INFORMATION
| |                          FOH 43H 2nH 4CH aaH aaH aaH F7H
| | ----- <PARAMETER REQUEST>
| | ----- XG SYSTEM          FOH 43H 3nH 4CH aaH aaH aaH F7H
| | ----- MULTI EFFECT       FOH 43H 3nH 4CH aaH aaH aaH F7H
| | ----- MULTI PART         FOH 43H 3nH 4CH aaH aaH aaH F7H
| | ----- DRUM SETUP         FOH 43H 3nH 4CH aaH aaH aaH F7H
| |
| | -----+ SYSTEM EXCLUSIV MESSAGE
| | GM MODE ON                  FOH 7EH 7FH 09H 01H F7H
| | MIDI MASTER VOLUME         FOH 7FH 7FH 04H 01H 11H mmH F7H
| | IDENTITY REQUEST           FOH 7EH 0nH 06H 01H F7H
| |
| | -----+ ACTIVE SENSING     FEH
  
```

SW1 [] Data received from MIDI-A will be sounded by Part g h (g h being the receive channel), and data received from MIDI-B will be sounded by Part g + 16 h.

(3) TRANSMIT/RECEIVE DATA

(3-1) CHANNEL VOICE MESSAGES

(3-1-1) NOTE OFF

```

STATUS      1000nnnn(8nH)      n = 0 ` 15 VOICE CHANNEL NUMBER
NOTE NUMBER  0kkkkkkkk         k = 0 (C-2) ` 127 (G8)
VELOCITY     0vvvvvvv          gv h is ignored
  
```

Received only.

(3-1-2) NOTE ON/OFF

```

STATUS      1001nnnn(9nH)      n = 0 ` 15 VOICE CHANNEL NUMBER
NOTE NUMBER  0kkkkkkkk         k = 0 (C-2) ` 127 (G8)
VELOCITY     0vvvvvvv          (v 0)
                                NOTE ON
                                (v 0)
                                NOTE OFF
  
```

(3-1-3) PROGRAM CHANGE

```

STATUS      1100nnnn(CnH)      n = 0 ` 15 VOICE CHANNEL NUMBER
PROGRAM NUMBER  Oppppppp        p = 0 ` 127
  
```

* Correspondence between XG Drum Voice number and Program Number

```

P = 1      DR1      Standard
P = 2      DR2      Standard2
P = 9      DR3      Room
P = 17     DR4      Rock
P = 25     DR5      Electric
P = 26     DR6      Analog
P = 33     DR7      Jazz
P = 41     DR8      Brush
P = 49     DR9      Classic
  
```

* Correspondence between XG SFX Kit number and Program number

```

P = 1      DR10     SFX1
P = 2      DR11     SFX2
  
```

MIDI Data Format

If while a Drum Voice is being selected, a program change for a different Drum Voice is received, the Drum Setup that was currently being used by the Drum Voice will be reset to the setting of the new Drum Voice.

(3-1-4) CHANNEL AFTER TOUCH

STATUS	1101nnnn(DnH)	n = 0	' 15 VOICE CHANNEL NUMBER
VALUE	0vvvvvvv	v = 0	' 127 AFTER TOUCH VALUE

Transmitted according to the Assignable Wheel and Pitch Bend settings.

(3-1-5) PITCH BEND CHANGE

STATUS	1110nnnn(EnH)	n = 0	' 15 VOICE CHANNEL NUMBER
LSB	0vvvvvvv		PITCH BEND CHANGE LSB
MSB	0vvvvvvv		PITCH BEND CHANGE MSB

14 bit resolution
 / MSB / /
 / 00000000B (00H) / minimum value /
 / 01000000B (40H) / center value /
 / 01111111B (7FH) / maximum value /

Transmitted according to the Assignable Wheel and Pitch Bend settings.

(3-1-6) CONTROL CHANGE

STATUS	1011nnnn(BnH)	n = 0	' 15 VOICE CHANNEL NUMBER
CONTROL NUMBER	0ccccccc		
CONTROL VALUE	0vvvvvvv		

* Control numbers transmitted

c = 0	BANK SEL MSB	; v =	0: XG NORMAL, 64: SFX NORMAL, 126: XG SFX KIT, 127: XG DRUM	
c = 32	BANK SEL LSB	; v =	0 - 127	*3
c = 1	MODULATION	; v =	0 - 127	*2
c = 7	MAIN VOLUME	; v =	0 - 127	
c = 11	EXPRESSION	; v =	0 - 127	
c = 16	FOOT CONTROLLER	; v =	0 - 127	*2
c = 64	SUSTAIN SWITCH	; v =	0-63: OFF , 64-127: ON	*2

c = 1 - 119 (except 32) are transmitted according to the Assignable Wheel and Pitch Bend settings.
 c = 64, 66 are transmitted according to the Foot Switch setting.

* Control numbers received

c = 0	BANK SEL MSB	; v =	0: XG NORMAL, 64: SFX NORMAL, 126: XG SFX KIT, 127: XG DRUM	
c = 32	BANK SEL LSB	; v =	0 - 127	
c = 1	MODULATION	; v =	0 - 127	*2
c = 5	PORTAMENTO TIME	; v =	0 - 127	*2
c = 6	DATA ENTRY MSB	; v =	0 - 127	*1
c = 38	DATA ENTRY LSB	; v =	0 - 127	*1
c = 7	MAIN VOLUME	; v =	0 - 127	
c = 10	PANPOT	; v =	0 - 127	
c = 11	EXPRESSION	; v =	0 - 127	
c = 16	ACL CONTROLLER	; v =	0 - 127	*2
c = 64	SUSTAIN SWITCH	; v =	0-63: OFF , 64-127: ON	*2
c = 65	PORTAMENTO SWITCH	; v =	0-63: OFF , 64-127: ON	*2
c = 66	SOSTENUTO	; v =	0-63: OFF , 64-127: ON	*2
c = 67	SOFT PEDAL	; v =	0-63: OFF , 64-127: ON	*2
c = 71	HARMONIC CONTENT	; v =	0:-64 - 64:0 - 127:+63	*2
c = 72	RELEASE TIME	; v =	0:-64 - 64:0 - 127:+63	*2
c = 73	ATTACK TIME	; v =	0:-64 - 64:0 - 127:+63	*2
c = 74	BRIGHTNESS	; v =	0:-64 - 64:0 - 127:+63	*2
c = 84	PORTAMENT CONTROL	; v =	0 - 127	*2
c = 91	EFFECT SEND LEVEL 1	; v =	0 - 127	
c = 93	EFFECT SEND LEVEL 3	; v =	0 - 127	
c = 94	EFFECT SEND LEVEL 4	; v =	0 - 127(only when Connection=1 (System))	
c = 96	DATA ENTRY INC	; v =	127	*1
c = 97	DATA ENTRY DEC	; v =	127	*1

*1 Used only to set the parameter specified by RPN.

*2 Not valid for rhythm voices.

*3 When MSB is other than 0 or 127, this is 0.

When MSB = 0, this is

0, 1, 3, 5, 8, 12, 14, 16, 17, 18, 19, 20, 24, 25, 27, 28, 32, 33, 34, 35, 36, 37, 38, 39, 40, 41, 42, 43, 45, 64, 65, 66, 67, 68, 69, 70, 71, 72, 96, 97, 98, 99, 100, 101

When MSB = 127, this is 0.

Modulation controls the depth of vibrato.

Portamento Time adjust the speed of the pitch change if Portamento Switch = ON.
 A setting of 0 produces the shortest portamento time, and 127 produces the longest portamento time.

For consistency with the GMx portamento control standard, this value is valid only for the portamento switch (Ctr#65).

Panpot produces change relative to the preset value of the voice, both for melody voices and for rhythm voices.

For Portamento Control, the portamento time is always fixed at 0.

Effect Send Level 1 controls the reverb send.
 Effect Send Level 3 controls the chorus send.
 Effect Send Level 4 controls the variation send.

Harmonic Content adjusts the resonance specified by the voice.
 This is a relative parameter, and specifies an increase or decrease centered at 64.
 Higher values will produce a more distinctive tone. For some voices, the effective range may be less than the range of the setting.

Release Time adjusts the envelope release time specified by the voice.
 This is a relative parameter, and specifies an increase or decrease centered at 64.

Attack Time adjusts the envelope attack time specified by the voice.
 This is a relative parameter, and specifies an increase or decrease centered at 64.

Brightness adjusts the cutoff frequency specified by the voice.
 This is a relative parameter, and specifies an increase or decrease centered at 64.
 Decreasing the value will make the sound more mellow. For some voices, the effective range may be less than the range of the setting.

The following Bank Select -related operations will all occur when a Program Change is received.

Bank Select MSB: 60h-6Fh are not sounded on models which do not support GMx, but since on the QY70 these are for future expansion of melodic voices, they will be sounded for the present by MSB 00h.

If Bank Select MSB is other than 0, 40H, 60H-6FH, 7EH, or 7FH, voice OFF will be selected.

If Bank Select MSB = 0, 40H, 60H-6FH, 7EH, or 7FH is selected, unsupported Bank Select LSB numbers will be ignored.

(3-2) CHANNEL MODE MESSAGES

STATUS	1011nnnn(BnH)	n = 0	' 15 VOICE CHANNEL NUMBER
CONTROL NUMBER	0ccccccc	c =	CONTROL NUMBER
CONTROL VALUE	0vvvvvvv	v =	DATA VALUE

(3-2-1) ALL SOUND OFF (CONTROL NUMBER = 78H , DATA VALUE = 0)

Turn off the sound of all currently sounding notes on the corresponding channel. The status of channel messages such as Note On and Hold On is also turned off.

(3-2-2) RESET ALL CONTROLLERS (CONTROL NUMBER = 79H , DATA VALUE = 0)

Resets the values of the following controllers.

PITCH BEND CHANGE	0 (center)
AFTER TOUCH	0 (minimum)
MODULATION	0 (off)
ACL CONTROLLER	0 (minimum)
EXPRESSION	127 (maximum)
SUSTAIN SWITCH	0 (off)
PORTAMENTO SWITCH	1 (on)
SOSTENUTO SWITCH	0 (off)
SOFT PEDAL	0 (off)
NRPN	Un-set status. Internal data will not change.
RPN	Un-set status. Internal data will not change.
PORTAMENT CONTROL	reset

The following data will not change.

PROGRAM CHANGE, BANK SELECT MSB/LSB, VOLUME, PAN.
 HARMONIC CONTENT, RELEASE TIME, ATTACK TIME, BRIGHTNESS, DRY SEND LEVEL, EFFECT SEND LEVEL 1, EFFECT SEND LEVEL 3, EFFECT SEND LEVEL 4, PITCH BEND SENSITIVITY, FINE TUNING, COURSE TUNING

(3-2-3) ALL NOTE OFF (CONTROL NUMBER = 7BH , DATA VALUE = 0)

Turns off all notes of the corresponding channel which are on. However if Sustain or Sostenuto are on, the sound will continue until these are turned off.

(3-2-4) OMNI MODE OFF (CONTROL NUMBER = 7CH , DATA VALUE = 0)

Performs the same processing as when All Note Off is received.
 Sets the Voice Receive Channel to OMNI OFF and channel 1.

(3-2-5) OMNI MODE ON (CONTROL NUMBER = 7DH , DATA VALUE = 0)

Performs the same processing as when All Note Off is received.
 Sets the Voice Receive Channel to OMNI ON.

(3-2-6) MONO (CONTROL NUMBER = 7EH , DATA VALUE = 0)

Performs the same processing as when All Sound Off is received, and if the 3rd byte (mono number) is in the range 0-16, sets the corresponding channel to Mode 4 (m = 1).
 If in Voice mode, Mode 2 (m=1) is also possible, according to the Voice Receive Channel.

(3-2-7) POLY (CONTROL NUMBER = 7FH , DATA VALUE = 0)

Performs the same processing as when All Sound Off is received, and sets the corresponding channel to Mode 3.
 When in Voice mode, Mode 2 (m=1) is also possible, according to the Voice Receive Channel.

(3-3) REGISTERED PARAMETER NUMBER

STATUS	1011nnnn(BnH)	n = 0	' 15 VOICE CHANNEL NUMBER
LSB	01100100(64H)		
RPN LSB	0ppppppp	p =	RPN LSB (refer to table on following page)
MSB	01100101(65H)		
RPN MSB	0qqqqqqq	q =	RPN MSB (refer to table on following page)
DATA ENTRY MSB	00000110(06H)		
DATA VALUE	0mmmmmmm	m =	Data Value
DATA ENTRY LSB	00100110(26H)		
DATA VALUE	01111111	l =	Data Value

First transmit an RPN MSB and RPN LSB to specify the parameter that is to be controlled. Then use Data Entry to set the value of the specified parameter.

RPN	D.ENTRY	PARAMETER NAME	DATA RANGE
LSB MSB MSB LSB		PARAMETER NAME	DATA RANGE
00H 00H mmH ---		PITCH BEND SENSITIVITY	00H - 18H (0-24 semitones)
01H 00H mmH 11H		MASTER FINE TUNE	{mmH,11H} = {00H,00H} - {40H,00H} - {7FH,7FH}(-8192*100/8192) - 0 - (+8192 *100/8192)
02H 00H mmH ---		MASTER COARSE TUNE	28H - 40H - 58H (-24-0+24 semitones)
7FH 7FH --- ---		RPN RESET	Set to a condition in which RPN number is unspecified. Internal settings will not change.

(3-4) NON-REGISTERED PARAMETER NUMBER

STATUS	1011nnnn (BnH)	n = 0 ' 15 VOICE CHANNEL NUMBER
LSB	01100010 (62H)	
RPN LSB	0ppppppp	p = NRPN LSB i refer to table below j
MSB	01100011 (63H)	
RPN MSB	0qqqqqqq	q = NRPN MSB i refer to table below j
DATA ENTRY MSB	00000110 (06H)	
DATA VALUE	0mmmmmm	m = Data Value

First transmit an NRPN MSB and NRPN LSB to specify the parameter that is to be controlled. Then use Data Entry to set the value of the specified parameter.

NRPND. ENTRY	PARAMETER NAME	DATA RANGE
MSB LSB MSB LSB	PARAMETER NAME	DATA RANGE
01H 08H mmH ---	VIBRATO RATE	00H - 40H - 7FH (-64 - 0 - +63)
01H 09H mmH ---	VIBRATO DEPTH	00H - 40H - 7FH (-64 - 0 - +63)
01H 0AH mmH ---	VIBRATO DELAY	00H - 40H - 7FH (-64 - 0 - +63)
01H 20H mmH ---	FILTER CUTOFF FREQUENCY	00H - 40H - 7FH (-64 - 0 - +63)
01H 21H mmH ---	FILTER RESONANCE	00H - 40H - 7FH (-64 - 0 - +63)
01H 63H mmH ---	EG ATTACK TIME	00H - 40H - 7FH (-64 - 0 - +63)
01H 64H mmH ---	EG DECAY TIME	00H - 40H - 7FH (-64 - 0 - +63)
01H 66H mmH ---	EG RELEASE TIME	00H - 40H - 7FH (-64 - 0 - +63)
14H rrH mmH ---	DRUM INST FILTER CUTOFF FREQ.	00H - 40H - 7FH (-64 - 0 - +63)
15H rrH mmH ---	DRUM INST FILTER RESONANCE	00H - 40H - 7FH (-64 - 0 - +63)
16H rrH mmH ---	DRUM INST AEG ATTACK RATE	00H - 40H - 7FH (-64 - 0 - +63)
17H rrH mmH ---	DRUM INST AEG DECAY	00H - 40H - 7FH (-64 - 0 - +63)
18H rrH mmH ---	DRUM INST PITCH COARSE RATE	00H - 40H - 7FH (-64 - 0 - +63)
19H rrH mmH ---	DRUM INST PITCH FINE	00H - 40H - 7FH (-64 - 0 - +63)
1AH rrH mmH ---	DRUM INST LEVEL	00H - 7FH (0 - maximum)
1CH rrH mmH ---	DRUM INST PANDOT	00H ,01H - 40H - 7FH (random,left - center - right)
1DH rrH mmH ---	DRUM INST REVERB SEND LEVEL	00H - 7FH (0 - maximum)
1EH rrH mmH ---	DRUM INST CHORUS SEND LEVEL	00H - 7FH (0 - maximum)
1FH rrH mmH ---	DRUM INST VARIATION SEND LEVEL	00H - 7FH (0 - maximum)

MSB 14h-1fh (for drum) are valid only if that channel is set to Drum Set mode
rrH : drum instrument note number

(3-5) SYSTEM REAL TIME MESSAGES

(3-5-1) ACTIVE SENSING

STATUS	11111110	(FEH)
--------	----------	-------

Transmitted at intervals of approximately 200 msec.
Not transmitted during disk read/write operations.

Once this message is received, sensing will begin. If neither status nor data messages are received for an interval longer than approximately 350 msec, the MIDI receive buffer will be cleared, and all sounding notes and the Sustain switch will be forced off. Also, the various controls will be reset to specific values.

(3-6) SYSTEM EXCLUSIVE MESSAGE

(3-6-1) UNIVERSAL NON REALTIME MESSAGE

(3-6-1-1) GENERAL MIDI MODE ON

FOH 7EH 7FH 09H 01H F7H

The following controller values will be reset.

VOLUME	100
PAN	Center
PROGRAM CHANGE	1 (Grandpno)
BANK SELECT MSB	0
REVERB DEPTH	4
PITCH BEND CHANGE	0 (center)
MODULATION	0 (off)
EXPRESSION	127 (maximum)
SUSTAIN SWITCH	0 (off)
SOSTENUTO SWITCH	0 (off)
RPN	condition of un-specified number
PORTAMENT CONTROL	reset
MIDI MASTER VOLUME	127 (maximum)
PITCH BEND SENSITIVITY	02 (2 semitones j)
FINE TUNING	0
COURSE TUNING	0

(3-6-1-2) IDENTITY REQUEST (received only)

FOH 7EH 0nH 06H 01H F7H(gn h is the device number, but the QY700 receives this in Omni)

(3-6-1-3) IDENTITY REPLY (transmitted only)

FOH 7EH 7FH 06H 02H 43H 00H 41H ddH ddH 00H 00H 00H 01H F7H
dd:Device Number Code QY700 = 01H,79H

(3-6-2) UNIVERSAL REALTIME MESSAGE

(3-6-2-1) MIDI MASTER VOLUME

FOH 7FH 7FH 04H 01H 11H mmH F7H

Modifies the Master Volume value.
The value of gmm h is used as the MIDI master volume. (gll h value is ignored)

(3-6-3) PARAMETER CHANGE

(3-6-3-1) MIDI MASTER TUNING

FOH 43H 1nH 27H 30H 00H 00H mmH 11H cch F7H

Modifies the Master Tune value.
The gmm h and gll h values are used as the MIDI master tuning. (gn h and gcc h values are ignored)

T = M*200/256-100

Where T: actual tuning value (-99 - +99)
M: a one-byte value with MSB of gmm h bits 0-3, and LSB of gll h bits 0-3.

(3-6-3-2) XG SYSTEM ON

11110000	F0	Exclusive status
01000011	43	YAMAHA ID
0001nnnn	1n	device Number
01001100	4C	Model ID
0aaaaaaaa	00	Address High
0aaaaaaaa	00	Address Mid
0aaaaaaaa	7E	Address Low
00000000	00	Data
11110111	F7	End of Exclusive

When ON is received, the System Mode will be changed to XG.
Since approximately 50 ms is required in order to execute this message, an appropriate interval must be allowed before the next message.
Controllers will be reset, and all Multi Part and Effect data of the attached table, together with the values of all data of All System that are noted as (XG), will be reset to the default values.

(3-6-3-3) XG PARAMETER CHANGE

11110000	F0	Exclusive status
01000011	43	YAMAHA ID
0001nnnn	1n	device Number
01001100	4C	Model ID
0aaaaaaaa	aaaaaaaa	Address High
0aaaaaaaa	aaaaaaaa	Address Mid
0aaaaaaaa	aaaaaaaa	Address Low
0ddddddd	ddddddd	Data
	b	
11110111	F7	End of Exclusive

For parameters with a data size of 2 or 4, the corresponding amount of data will be transmitted.

For addresses and byte counts, refer to the attached tables.

The following four types are transmitted and received. (Transmitted only if a Parameter Change Request is received.)

Multi Effect Data	ignored in Voice mode j
Multi Part Data	ignored in Voice mode j
Drums Setup Data	

(3-6-4) BULK DUMP

(3-6-4-1) XG BULK DUMP

11110000	F0	Exclusive status
01000011	43	YAMAHA ID
0000nnnn	0n	device Number
01001100	4C	Model ID
0bbbbbbb	bbbbbbb	ByteCount
0bbbbbbb	bbbbbbb	ByteCount
0aaaaaaaa	aaaaaaaa	Address High
0aaaaaaaa	aaaaaaaa	Address Mid
0aaaaaaaa	aaaaaaaa	Address Low
00000000	00	Data
	b	
0ccccccc	ccccccc	Check-sum
11110111	F7	End of Exclusive

For addresses and byte counts, refer to the attached tables.

Check sum is the value which produces a lower 7 bits of zero when the Byte Count, Start Address, Data, and the Check-sum itself are added.
513 bytes or more must not be transmitted at once. Thus, if a dump request for 513 or more bytes is received, the data will be divided into packets of 512 bytes or less, and transmitted at an appropriate timing interval (120 msec or longer).

MIDI Data Format

The following five types are transmitted and received. (Transmitted only if a Bulk Dump Request Request is received)

System Data
 Multi Effect Data (for each module)
 Multi Part Data (for each part)
 Drums Setup Data (for each note)
 System Information (transmitted only)

(3-6-6) DUMP REQUEST
 (3-6-6-1) XG DUMP REQUEST

11110000	F0	Exclusive status
01000011	43	YAMAHA ID
0010nnnn	2n	device Number
01001100	4C	Model ID
0aaaaaaa	aaaaaaa	Address High
0aaaaaaa	aaaaaaa	Address Mid
0aaaaaaa	aaaaaaa	Address Low
11110111	F7	End of Exclusive

Refer to the appended tables for Address and Byte Count.
 The following four types are received.

System Dat
 Multi Effect Data (for each module j)
 Multi Part Data (for each part j)
 Drums Setup Data (for each note j)

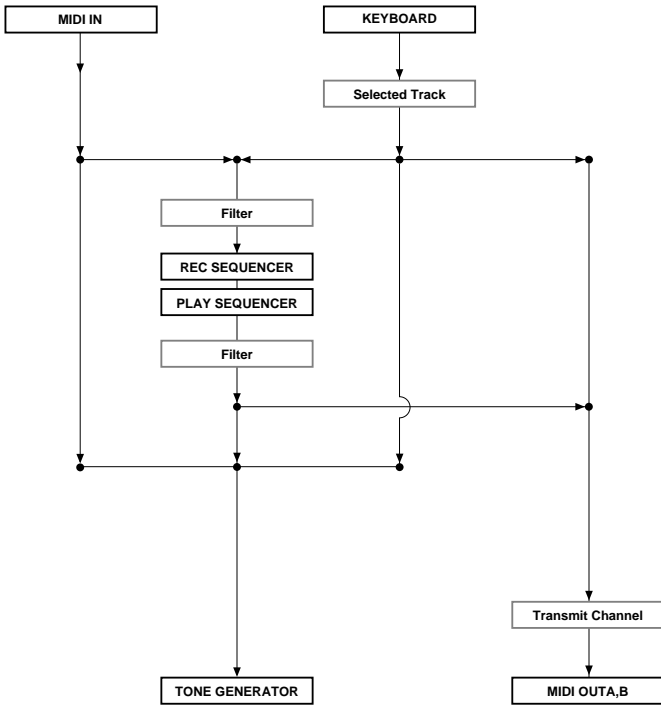
(3-6-5) XG PARAMETER REQUEST

11110000	F0	Exclusive status
01000011	43	YAMAHA ID
0011nnnn	3n	device Number
01001100	4C	Model ID
0aaaaaaa	aaaaaaa	Address High
0aaaaaaa	aaaaaaa	Address Mid
0aaaaaaa	aaaaaaa	Address Low
11110111	F7	End of Exclusive

Refer to the appended tables for Address and Byte Count.
 The following four types are received.

System Data
 Multi Effect Data
 Multi Part Data
 Drums Setup Data

(4) Diagram of connections between the keyboard/switch block, sequencer block, and tone generator block



Sequencer part

(1) TRANSMIT FLOW

MIDI <-[]--	SW1 SW3	CHANNEL VOICE MESSAGE	
OUT		NOTE ON/OFF	9nH
		KEY'S AFTER TOUCH	AnH
		CONTROL CHANGE	BnH
		PROGRAM CHANGE	CnH
		CHANNEL AFTER TOUCH	DnH
		PITCH BEND CHANGE	EnH
		SW3	
		----[]--	CHANNEL MODE MESSAGE
		ALL SOUND OFF	BnH 78H
		RESET ALL CONTROLLERS	BnH 79H
		LOCAL CONTROL	BnH 7AH
		OMNI MODE OFF	BnH 7CH
		OMNI MODE ON	BnH 7DH
		MONO MODE ON	BnH 7EH
		POLY MODE ON	BnH 7FH
		SW2	
		-[]+---	SYSTEM REALTIME MESSAGE
		TIMING CLOCK	F8H
		START	FAH
		CONTINUE	FBH
		STOP	FCH
		+---	SYSTEM COMMON MESSAGE
		SONG POSITION POINTER	F2H
		SW3	
		----[]--	SYSTEM EXCLUSIV MESSAGE
		SW2 SW4	F0H F7H
		-[]-[]--	MIDI MACHINE CONTROL
		STOP	F0H 7FH 7FH 06H 01H F7H
		DEFERRED PLAY	F0H 7FH 7FH 06H 03H F7H
		LOCATE	F0H 7FH 7FH 06H 44H 06H 01H hrH mnH scH frH
			ffH 7FH

SW1 [] MIDI Transmit Channel
 For each track, transmission can be turned on/off, and the transmit channel can be set.

SW2 [] MIDI Control Out
 Transmission can be turned on/off.

SW3 [] MIDI Filter
 Transmission can be turned on/off.

SW4 [] MIDI Sync
 Transmitted when MIDI Sync = MTC

(2) RECEIVE FLOW

MIDI >-[]+--	SW1	<CHANNEL VOICE MESSAGE>	
IN		----	NOTE OFF
		8nH	
		-[SW3]-	NOTE ON/OFF
		9nH	
		----	KEY'S AFTER TOUCH
		AnH	
		----	CONTROL CHANGE
		BnH	
		----	PROGRAM CHANGE
		CnH	
		----	CHANNEL AFTER TOUCH
		DnH	
		----	PITCH BEND CHANGE
		EnH	
		----	CHANNEL MODE MESSAGE
		ALL SOUND OFF	BnH 78H
		RESET ALL CONTROLLERS	BnH 79H
		LOCAL CONTROL	BnH 7AH
		OMNI MODE OFF	BnH 7CH
		OMNI MODE ON	BnH 7DH
		MONO MODE ON	BnH 7EH
		POLY MODE ON	BnH 7FH
		----	SYSTEM EXCLUSIV MESSAGE
		SW4	F0H F7H
		-[]-----	TIMING CLOCK
		F8H	
		SW4	
		-[]-----	MTC QUATER FRAME MESSAGE
		F1H	
		SW2	
		-[]+---	SYSTEM REALTIME MESSAGE
		START	FAH
		CONTINUE	FBH
		STOP	FCH
		+---	SYSTEM COMMON MESSAGE
		SONG POSITION POINTER	F2H
		+-----	SYSTEM EXCLUSIV MESSAGE
		SECTION CONTROL	F0H 43H 7EH 00H ssH ddH F7H
		TEST ENTRY	F0H 43H 10H 18H 5AH 00H F7H
		LCD HARD COPY	F0H 43H 10H 18H 5AH 01H F7H

SW1 [] Input Filter
 Reception can be turned on/off using the various Input Filter settings.

SW2 [] MIDI Control In
 Reception can be turned on/off.

SW3 [] Velocity Filter
 Step recording and editing input of velocity can be turned on/off.

SW4 [] MIDI Sync

Select whether timing will be determined by the internal clock, or by MIDI Clock messages or MTC received at MIDI IN.

(3) TRANSMIT/RECEIVE DATA

(3-1) CHANNEL VOICE MESSAGE

Transmitted only during recording and playback.

Transmission channel can be turned on/off and the transmit channel set for each track.

Received only during recording. All channels are always received.

During multi track record, data of MIDI channels 0-15 received on either MIDI IN A or B will be recorded separately onto tracks 1-16.

* In Record mode, recording is normally Omni ON.

However during multi track record, this will be Omni OFF, and data of MIDI channels 0-15 received on either MIDI IN A or B will be recorded separately onto tracks 1-16.

(3-1-1) NOTE OFF

STATUS	1000nnnn(8nH)	n = 0	' 15 TRACK CHANNEL NUMBER
NOTE NUMBER	0kkkkkkk	k = 0	(C-2) ' 127 (G8)
VELOCITY	0vvvvvvv	v	is ignored

Only recorded.

During recording, converted into 9nH kkH 00H.

(3-1-2) NOTE ON/OFF

STATUS	1001nnnn(9nH)	n = 0	' 15 TRACK CHANNEL NUMBER
NOTE NUMBER	0kkkkkkk	k = 0	(C-2) ' 127 (G8)
VELOCITY	0vvvvvvv	(v 0)	NOTE ON
	00000000	(v 0)	NOTE OFF

During recording, step recording and edit input of velocity can be turned on/off.

(3-1-3) POLYPHONIC KEY PRESSURE

STATUS	1010nnnn(AnH)	n = 0	' 15 TRACK CHANNEL NUMBER
NOTE NUMBER	0kkkkkkk	k = 0	(C-2) ' 127 (G8)
VALUE	0vvvvvvv	v = 0	- 127

(3-1-4) CONTROL CHANGE

STATUS	1011nnnn(BnH)	n = 0	' 15 TRACK CHANNEL NUMBER
CONTROL NUMBER	0ccccccc		
CONTROL VALUE	0vvvvvvv		

All control change messages are recorded and played back.

(3-1-5) PROGRAM CHANGE

STATUS	1100nnnn(CnH)	n = 0	' 15 TRACK CHANNEL NUMBER
PROGRAM NUMBER	0ppppppp	p = 0	' 127

(3-1-6) CHANNEL PRESSURE

STATUS	1101nnnn(DnH)	n = 0	' 15 TRACK CHANNEL NUMBER
VALUE	0vvvvvvv	v = 0	' 127

(3-1-7) PITCH BEND CHANGE

STATUS	1110nnnn(EnH)	n = 0	' 15 TRACK CHANNEL NUMBER
LSB	0vvvvvvv	PITCH BEND LSB 0	' 127
MSB	0vvvvvvv	PITCH BEND MSB 0	' 127

(3-2) CHANNEL MODE MESSAGE

The following messages are recorded and played back.

RESET ALL CONTROLLERS	BnH 78H
LOCAL CONTROL	BnH 7AH
OMNI MODE OFF	BnH 7CH
OMNI MODE ON	BnH 7DH
MONO MODE ON	BnH 7EH
POLY MODE ON	BnH 7FH

(3-3) SYSTEM COMMON MESSAGE

These are transmitted and received as control messages for QY700 functions. They are not recorded as sequence data.

(3-3-1) SONG POSITION POINTER

STATUS	11110010(F2H)	
LSB	0vvvvvvv	SONG POSITION LSB
MSB	0vvvvvvv	SONG POSITION MSB

Transmitted when you move to a different measure in Song Play mode. Received when in Song Play standby.

(3-4) SYSTEM REAL TIME MESSAGE

Not recorded as sequence data.

(3-4-1) TIMING CLOCK

STATUS	11111000(F8H)
--------	---------------

You can select whether the internal clock will be used as the timing clock, or whether Timing Clock messages from MIDI IN will be used. Transmission and reception can be turned on/off independently.

(3-4-2) START

STATUS	11111010(FAH)
--------	---------------

Transmission/reception can be turned on/off.

(3-4-3) CONTINUE

STATUS	11111011(FBH)
--------	---------------

Transmission/reception can be turned on/off.

(3-4-4) STOP

STATUS	11111100(FCH)
--------	---------------

Transmission/reception can be turned on/off.

(3-5) SYSTEM EXCLUSIVE MESSAGE

All system exclusive messages are recorded and played back.

Even if time intervals existed within the actual data that was received, the entire message between F0 and F7 will be recorded into one timing location. For playback, an interval time can be specified for each 1K bytes.

(3-6) SECTION CONTROL

11110000	F0	Exclusive status
01000011	43	YAMAHA ID
01111110	7E	Style
00000000	00	Section Control
0sssssss	ss	Section
0ddddd	dd	On/Off
11110111	F7	End of Exclusive

System Software h = 08H-0FH, dd=ON is received, and the Pattern will be converted into QY700 sections A-H respectively.

(3-7) MIDI TIME CODE(QUARTER FRAME MESSAGE)

STATUS	11110001(F1H)
	0nnxxxxx

If MTC is selected as the Timing Clock, MTC Quarter Frame messages will be received.

(3-8) MIDI MACHINE CONTROL

These will be received if MTC is selected as the Timing Clock.

(3-8-1) STOP(MCS)

11110000	F0	Exclusive status
01111111	7F	RealTime Header
01111111	7F	device ID
00000110	06	MMC Command Message
00000001	01	STOP(MCS)
11110111	F7	End of Exclusive

Transmitted when the STOP key is pressed.

(3-8-2) DEFERRED PLAY(MCS)

11110000	F0	Exclusive status
01111111	7F	RealTime Header
01111111	7F	device ID
00000110	06	MMC Command Message
00000001	01	DEFERRED PLAY(MCS)
11110111	F7	End of Exclusive

Transmitted when the RUN key is pressed.

(3-8-3) LOCATE(MCP)

11110000	F0	Exclusive status
01111111	7F	RealTime Header
01111111	7F	device ID
00000110	06	MMC Command Message
00000001	01	LOCATE(MCP)
00000110	06	Byte Count
00000001	01	"TARGET" Sub Command
0tthhhh	hr	standard time specification with sub-frames
0cmmmmmm	mn	
0kssssss	sc	
0gifffff	fr	
0bbbbbbb	ff	
11110111	F7	End of Exclusive

Transmitted when you move between measures in Song Play mode.

MIDI Data Format

<Table 1-1>

Parameter Bass Address

Address	Parameter Change Address	Description
	(H) (M) (L)	
SYSTEM	00 00 00	System
	00 00 7D	Drum Setup Reset
	00 00 7E	XG System On
	00 00 7F	All Parameter Reset
INFORMATION	01 00 00	System Information
EFFECT 1	02 01 00	Effect1(Reverb,Chorus,Variation)
	02 40 00	Reserved
	: : :	:
MULTI PART	08 00 00	Multi Part 1
	: : :	:
	08 0F 00	Multi Part 32
	: : :	:
	: : :	:
DRUM	30 18 00	Drum Setup 1----->Address Parameter
	31 18 00	Drum Setup 2 : :
	: : :	:
	32 18 00	Reserved 3n 18 00 note number 24
	: : :	: : :
	3F nn nn	Reserved 3n 19 00 note number 25
	: : :	: : :
	: : :	: : :
	: : :	3n 54 00 note number 84

<Table 1-2>

MIDI Parameter Change table (SYSTEM)

Address (H)	Size (H)	Data (H)	Parameter Name	Description	Default value(H)
00 00 00	4	0000	Master Tune	-102.4..+102.3[cent]	00 04 00 00
01	..07FF			1st bit3-0 dbit15-12	(0400)
02				2nd bit3-0 dbit11-8	(not reset by XG or GM ON)
03				3rd bit3-0 dbit7-4	
				4th bit3-0 dbit3-0	
04 1	00..7F		Master Volume	0..127	7F
05 1	00..7F		Not Used		
06 1	28..58		Transpose	-24..+24[semitones]	40
7D	n		Drum Setup Reset	n=Drum Setup Number	
7E	00		XG System On	00=XG System on (receive only)	
7F	00		All Parameter Reset	00=on (receive only)	

<Table 1-3>

MIDI Parameter table (System information)

Address (H)	Size (H)	Data (H)	Parameter Name	Description	Default value(H)
01 00 00	E	20..7F	Model Name	("QY700 ")	
	:				
0E 1	00				
0F 1	00		XG Support Level	0..127	

<Table 1-4>

MIDI Parameter Change table (EFFECT 1)

Address (H)	Size (H)	Data (H)	Parameter Name	Description	Default value(H)
02 01 00	2	00..7F	Reverb Type MSB	refer to Effect Type List	01(=HALL1)
		00..7F	Reverb Type LSB	00 : basic type	00
02 1	00..7F		Reverb Parameter 1	refer to Ef. Parameter List	depends on Reverb type
03 1	00..7F		Reverb Parameter 2	V	V
04 1	00..7F		Reverb Parameter 3	V	V
05 1	00..7F		Reverb Parameter 4	V	V
06 1	00..7F		Reverb Parameter 5	V	V
07 1	00..7F		Reverb Parameter 6	V	V
08 1	00..7F		Reverb Parameter 7	V	V
09 1	00..7F		Reverb Parameter 8	V	V
0A 1	00..7F		Reverb Parameter 9	V	V
0B 1	00..7F		Reverb Parameter 10	V	V
0C 1	00..7F		Reverb Return	- ..0..+6dB(0..96..127)	60
0D 1	01..7F		Reverb Pan	L63..C..R63(1..64..127)	40
02 01 10	1	00..7F	Reverb Parameter 11	refer to Ef. Parameter List	depends on Reverb type
11 1	00..7F		Reverb Parameter 12	V	V
12 1	00..7F		Reverb Parameter 13	V	V
13 1	00..7F		Reverb Parameter 14	V	V
14 1	00..7F		Reverb Parameter 15	V	V
15 1	00..7F		Reverb Parameter 16	V	V

02 01 20	2	00..7F	Chorus Type MSB	refer to Effect Type List	41(=Chorus1)
		00..7F	Chorus Type LSB	00 : basic type	00
22 1	00..7F		Chorus Parameter 1	refer to Ef. Parameter List	depends on Chorus Type
23 1	00..7F		Chorus Parameter 2	V	V
24 1	00..7F		Chorus Parameter 3	V	V
25 1	00..7F		Chorus Parameter 4	V	V
26 1	00..7F		Chorus Parameter 5	V	V
27 1	00..7F		Chorus Parameter 6	V	V
28 1	00..7F		Chorus Parameter 7	V	V
29 1	00..7F		Chorus Parameter 8	V	V
2A 1	00..7F		Chorus Parameter 9	V	V
2B 1	00..7F		Chorus Parameter 10	V	V
2C 1	00..7F		Chorus Return	..0..+6dB(0..96..127)	60
2D 1	01..7F		Chorus Pan	L63..C..R63(1..64..127)	40
2E 1	00..7F		Send Chorus To Reverb	- ..0..+6dB(0..96..127)	00
TOTAL	SIZE	0F			

02 01 30	1	00..7F	Chorus Parameter 11	refer to Ef. Parameter List	depends on Chorus Type
31 1	00..7F		Chorus Parameter 12	V	V
32 1	00..7F		Chorus Parameter 13	V	V
33 1	00..7F		Chorus Parameter 14	V	V
34 1	00..7F		Chorus Parameter 15	V	V
35 1	00..7F		Chorus Parameter 16	V	V
TOTAL	SIZE	6			

02 01 40	2	00..7F	Variation Type MSB	refer to Ef. Parameter List	"05(=DELAY L,C, R)"
		00..7F	Variation Type LSB	00 : basic type	00
42 2	00..7F		Variation Param 1 MSB	refer to Ef. Parameter List	depends on vari. type
		00..7F	Variation Param 1 LSB	V	V
44 2	00..7F		Variation Param 2 MSB	refer to Ef. Parameter List	depends on vari. type
		00..7F	Variation Param 2 LSB	V	V
46 2	00..7F		Variation Param 3 MSB	refer to Ef. Parameter List	depends on vari. type
		00..7F	Variation Param 3 LSB	V	V

48 2	00..7F		Variation Param 4 MSB	refer to Ef. Parameter List	depends on vari. type
		00..7F	Variation Param 4 LSB	V	V
4A 2	00..7F		Variation Param 5 MSB	refer to Ef. Parameter List	depends on vari. type
		00..7F	Variation Param 5 LSB	V	V
4C 2	00..7F		Variation Param 6 MSB	refer to Ef. Parameter List	depends on vari. type
		00..7F	Variation Param 6 LSB	V	V

4E 2	00..7F		Variation Param 7 MSB	refer to Ef. Parameter List	depends on vari. type
		00..7F	Variation Param 7 LSB	V	V
50 2	00..7F		Variation Param 8 MSB	refer to Ef. Parameter List	depends on vari. type
		00..7F	Variation Param 8 LSB	V	V
52 2	00..7F		Variation Param 9 MSB	refer to Ef. Parameter List	depends on vari. type
		00..7F	Variation Param 9 LSB	V	V
54 2	00..7F		Variation Param 10 MSB	refer to Ef. Parameter List	depends on vari. type
		00..7F	Variation Param 10 LSB	V	V

56 1	00..7F		Variation Return	- ..0..+6dB(0..96..127)	60
57 1	01..7F		Variation Pan	L63..C..R63(1..64..127)	40
58 1	00..7F		Send Variation To Rev.	- ..0..+6dB(0..96..127)	00
59 1	00..7F		Send Variation To Cho.	- ..0..+6dB(0..96..127)	00
5A 1	00..01		Variation Connection	0:insertion,1:system	00
5B 1	00..1F		Variation Part	part1..32(0..31),off(127)	7F
5C 1	01..7F		MW Variation Ctrl Depth	-63..+63	00
5D 1	01..7F		PB Variation Ctrl Depth	-63..+63	00
5E 1	01..7F		AT Variation Ctrl Depth	-63..+63	00
5F 1	01..7F		AC1 Variation CtrlDepth	-63..+63	00
60 1	01..7F		AC2 Variation CtrlDepth	-63..+63	00
TOTAL	SIZE	21			

02 01 70	1	00..7F	Variation Parameter 11 option Parameter		depends on vari. type
71 1	00..7F		Variation Parameter 12	V	V
72 1	00..7F		Variation Parameter 13	V	V
73 1	00..7F		Variation Parameter 14	V	V
74 1	00..7F		Variation Parameter 15	V	V
75 1	00..7F		Variation Parameter 16	V	V
TOTAL	SIZE	6			

<Table 1-5>

MIDI Parameter Change table (MULTI PART)

Address (H)	Size (H)	Data (H)	Parameter Name	Description	Default value(H)
08 nn 00	1	00..20	Element Reserve	0..32	0 (Part10) , 2 (Others)
nn 01 1	00..7F		Bank Select MSB	0..127	7F (Part10) , 00 (Others)
nn 02 1	00..7F		Bank Select LSB	0..127	00
nn 03 1	00..7F		Program Number	1..128	00
nn 04 1	00..0F,7F		Rcv Channel	0..15;1..16,127;off	Part No.7F
nn 05 1	00..01		Mono/Poly Mode	0:mono,1:poly	01
nn 06 1	00..02		Same Note Number	0:single	01
			Key On Assign	1:multi	
				2:inst (for DRUM)	

```

nn 07 1 00..02 Part Mode 0:normal 00 (other than
Part 10)
nn 08 1 28..58 Note Shift 1..3:drum thru,drum1..2 01 (Part10)
24..+24[semitones] 40
nn 09 2 00..FF Detune -12.8..+12.7[Hz] 08 00
nn 0A 1 00..7F Pan 1st bit3..0 4bit7..4 (80)
2nd bit3..0 4bit3..0
nn 0B 1 00..7F Volume 0..127 64
nn 0C 1 00..7F Velocity Sense Depth 0..127 40
nn 0D 1 00..7F Velocity Sense Offset 0..127 40
nn 0E 1 00..7F Pan 0:random 40
L63..C..R63(1..64..127)
nn 0F 1 00..7F Note Limit Low C-2..G8 00
nn 10 1 00..7F Note Limit High C-2..G8 7F
nn 11 1 00..7F Dry Level0..127 7F
nn 12 1 00..7F Chorus Send 0..127 00
nn 13 1 00..7F Reverb Send 0..127 28
nn 14 1 00..7F Variation Send 0..127 00
nn 15 1 00..7F Vibrato Rate -64..+63 40
nn 16 1 00..7F Vibrato Depth -64..+63 40
nn 17 1 00..7F Vibrato Delay -64..+63 40
nn 18 1 00..7F Filter Cutoff Frequency -64..+63 40
nn 19 1 00..7F Filter Resonance -64..+63 40
nn 1A 1 00..7F EG Attack Time -64..+63 40
nn 1B 1 00..7F EG Decay Time -64..+63 40
nn 1C 1 00..7F EG Release Time -64..+63 40
nn 1D 1 28..58 MW Pitch Control -24..+24[semitones] 40
nn 1E 1 00..7F MW Filter Control -9600..+9450[cent] 40
nn 1F 1 00..7F MW Amplitude Control -64..+63 40
nn 20 1 00..7F MW LFO PMod Depth 0..127 0A
nn 21 1 00..7F MW LFO FMod Depth 0..127 00
nn 22 1 00..7F MW LFO AMod Depth 0..127 00
nn 23 1 28..58 Bend Pitch Control -24..+24[semitones] 42
nn 24 1 00..7F Bend Filter Control -9600..+9450[cent] 40
nn 25 1 00..7F Bend Amplitude Control -64..+63 40
nn 26 1 00..7F Bend LFO PMod Depth 0..127 00
nn 27 1 00..7F Bend LFO FMod Depth 0..127 00
nn 28 1 00..7F Bend LFO AMod Depth 0..127 00
TOTAL SIZE 29
nn 30 1 00..01 Not Used
nn 31 1 00..01 Not Used
nn 32 1 00..01 Not Used
nn 33 1 00..01 Not Used
nn 34 1 00..01 Not Used
nn 35 1 00..01 Not Used
nn 36 1 00..01 Not Used
nn 37 1 00..01 Not Used
nn 38 1 00..01 Not Used
nn 39 1 00..01 Not Used
nn 3A 1 00..01 Not Used
nn 3B 1 00..01 Not Used
nn 3C 1 00..01 Not Used
nn 3D 1 00..01 Not Used
nn 3E 1 00..01 Not Used
nn 3F 1 00..01 Not Used
nn 40 1 00..01 Not Used
nn 41 1 00..7F Not Used
nn 42 1 00..7F Not Used
nn 43 1 00..7F Not Used
nn 44 1 00..7F Not Used
nn 45 1 00..7F Not Used
nn 46 1 00..7F Not Used
nn 47 1 00..7F Not Used
nn 48 1 00..7F Not Used
nn 49 1 00..7F Not Used
nn 4A 1 00..7F Not Used
nn 4B 1 00..7F Not Used
nn 4C 1 00..7F Not Used
nn 4D 1 28..58 Ch's AT Pitch Control -24..+24[semitones] 40
nn 4E 1 00..7F Ch's AT Filter Control -9600..+9450[cent] 40
nn 4F 1 00..7F Ch's AT Amp. Control -100..+100[db] 40
nn 50 1 00..7F Ch's AT LFO PMod Depth 0..127 00
nn 51 1 00..7F Ch's AT LFO FMod Depth 0..127 00
nn 52 1 00 Ch's AT LFO AMod Depth 0..127 00
nn 53 1 28..58 Not Used
nn 54 1 00..7F Not Used
nn 55 1 00..7F Not Used
nn 56 1 00..7F Not Used
nn 57 1 00..7F Not Used
nn 58 1 00 Not Used
nn 59 1 00..5F Not Used
nn 5A 1 28..58 Not Used
nn 5B 1 00..7F Not Used
nn 5C 1 00..7F Not Used
nn 5D 1 00..7F Not Used
nn 5E 1 00..7F Not Used
nn 5F 1 00..7F Not Used
nn 60 1 00..5F Not Used
nn 61 1 28..58 Not Used
nn 62 1 00..7F Not Used
nn 63 1 00..7F Not Used

```

```

nn 64 1 00..7F Not Used
nn 65 1 00..7F Not Used
nn 66 1 00..7F Not Used
nn 67 1 00..01 Portamento Switch off/on 00
nn 68 1 00..7F Portamento Time 0..127 00
nn 69 1 00..7F Pitch EG Initial Level -64..+63 40
nn 6A 1 00..7F Pitch EG Attack Time -64..+63 40
nn 6B 1 00..7F Pitch EG Release Level -64..+63 40
nn 6C 1 00..7F Pitch EG Release Time -64..+63 40
nn 6D 1 00..7F Not Used
nn 6E 1 00..7F Not Used

```

TOTAL SIZE 3F

nn = PartNumber

For the Drum Part, the following parameters have no effect.

- Bank Select LSB
- Bump EG
- Portamento
- Soft Pedal
- Mono/Poly
- Scale Tuning
- Pitch EG

<Table 1-6>

MIDI Parameter Change table (DRUM SETUP)

Address (H)	Size (H)	Data (H)	Parameter Name	Description	Default value(H)
3n rr 00	1	00..7F	Pitch Coarse	-64..+63	relative effect 00
3n rr 01	1	00..7F	Pitch Fine	-64..+63[cent]	relative effect 00
3n rr 02	1	00..7F	Level	0..127	absolute effect XG Drum1
3n rr 03	1	00..7F	Alternate Group	0:off,1..127	absolute effect XG Drum1
3n rr 04	1	00..7F	Pan	0:random	absolute effect XG Drum1
3n rr 05	1	00..7F	Reverb Send Level	L63..C..R63(1..64..127) 0..127	absolute effect XG Drum1
3n rr 06	1	00..7F	Chorus Send Level	0..127	absolute effect XG Drum1
3n rr 07	1	00..7F	Variation Send Level	0..127	absolute effect XG Drum1
3n rr 08	1	00..01	Key Assign	0:single,1:multi	absolute effect XG Drum1
3n rr 09	1	00..01	Rcv Note Off	off/on	absolute effect XG Drum1
(invalid for voices for which GMx does not specify Note-Off recognition)					
3n rr 0A	1	00..01	Rcv Note On	off/on	absolute effect XG Drum1
3n rr 0B	1	00..7F	Filter Cutoff Frequency	-64..63	relative effect 00
3n rr 0C	1	00..7F	Filter Resonance	-64..63	relative effect 00
3n rr 0D	1	00..7F	EG Attack Rate	-64..63	relative effect 00
3n rr 0E	1	00..7F	EG Decay1 Rate	-64..63	relative effect 00
3n rr 0F	1	00..7F	EG Decay2 Rate	-64..63	relative effect 00

TOTAL SIZE 10

n:Drum Setup Number - 1
rr:note number(0D - 5B)

When XG System ON or GM System ON messages are received, all Drum Setup parameters will be initialized.

Drum Setup Reset message allows individual Drum Setup parameters to be initialized.

<Table 1-7>

Effect Type List

REVERB TYPE [] is the order of display

TYPE MSB	TYPE LSB
DEC HEX	DEC HEX
000 0	00 [00]No Effect
001 1	[01]Rev Hall 1 [02]Rev Hall 2
002 2	[03]Rev Room1 [04]Rev Room 2 [05]Rev Room 3
003 3	[06]Rev Stage 1 [07]Rev Stage 2
004 4	[08]Rev Plate
005 5	No Effect
:	:
015 F	No Effect
016 10	[09]Rev WhiteRm
017 11	[10]Rev Tunnel
018 12	No Effect
019 13	[11]Rev Basement
020 14	No Effect
:	:
127 7F	No Effect

MIDI Data Format

CHORUS TYPE

TYPE MSB		TYPE LSB			
DEC	HEX	00	01	02	08
000	0	[00]No Effect			
001	1	No Effect			
:	:	:			
064	40	No Effect			
065	41	[01]Chorus 1	[02]Chorus 2	[03]Chorus 3	[04]Chorus 4
066	42	[05]Celeste 1	[06]Celeste 2	[07]Celeste 3	[08]Celeste 4
067	43	[09]Flanger 1	[10]Flanger 2		[11]Flanger 3
068	46	No Effect			
069	45	No Effect			
:	:	:			
:	:	:			
127	7F	No Effect			

VARIATION TYPE(0 '63)

TYPE MSB		TYPE LSB			
DEC	HEX	00	01	02	
000	0	[00]No Effect			
001	1	[01]Rev Hall 1		[02]Rev Hall 2	
002	2	[03]Rev Room 1		[04]Rev Room 2	[05]Rev Room 3
003	3	[06]Rev Stage1		[07]Rev Stage2	
004	4	[08]Rev Plate			
005	5	[09]DelayL,C,R			
006	6	[10]Delay L,R			
007	7	[11]Echo			
008	8	[12]CrossDelay			
009	9	[13]EarlyRef.1		[14]EarlyRef.	
010	A	[15]GateReverb			
011	B	[16]ReversGate			
012	C	No Effect(sys),THRU(ins)			
:	:	:			
019	13	No Effect(sys),THRU(ins)			
020	14		[17]RevKaraok1	[18]RevKaraok2	[19]RevKaraok3
021	15	No Effect(sys),THRU(ins)			
:	:	:			
063	3F	No Effect(sys),THRU(ins)			

VARIATION TYPE(64 '127)

TYPE MSB		TYPE LSB			
DEC	HEX	00	01	02	08
064	40	[43]THRU			
065	41	[20]Chorus 1	[21]Chorus 2	[22]Chorus 3	[23]Chorus 4
066	42	[24]Celeste 1	[25]Celeste 2	[26]Celeste 3	[27]Celeste 4
067	43	[28]Flanger 1	[29]Flanger 2		[30]Flanger 3
068	44	[31]Symphonic			
069	45	[32]RotarySp.			
070	46	[33]Tremolo			
071	47	[34]Auto PAN			
072	48	[35]Phaser 1			
073	49	[37]Distortion			
074	4A	[38]Overdrive			
075	4B	[39]G-Amp.Sim.			
076	4C	[40]3 Band EQ			
077	4D	[41]2 Band EQ			
078	4E	[42]Auto Wah			
079	4F	THRU			
:	:	:			
127	7F	THRU			

Function ...	Transmitted	Recognized	Remarks
:Basic Default	: 1 - 16	: 1 - 16	: Memorized
:Channel Changed	: 1 - 16	: 1 - 16	:
: Mode Default	: 3	: 1 - 4(m=1)	: Memorized
: Mode Messages	: x	: 1 - 4(m=1)	:
: Mode Altered	: *****	: x	:
:Note Number : True voice	: 0 - 127 : *****	: 0 - 127 : 0 - 127	: Transpose
:Velocity Note ON	: o 9nH,v=1-127	: o v=1-127	:
:Velocity Note OFF	: x 9nH,v=0	: x	:
:After Touch Key's	: x	: o	:
:After Touch Ch's	: o	: o	:
:Pitch Bender	: o	: o 0-24 semi	: 7 bit resolution:
:Control 0-95	: o	: o	: Bank Select
:Control 71-74	: o	: o	:
:Control 84	: x	: o	:
:Control 91,93,94	: x	: o	: Assignable Cntrl:
:Control 96,97	: x	: o	: Sound Controller:
:Control 98,99	: x	: o	: Portamento Cntrl:
:Control 100,101	: x	: o	: Effect SendLevel:
:Control 120	: x	: o	: Data Inc,Dec
:Control 121	: x	: o	: NRPN LSB,MSB
			: RPN LSB,MSB
			: All Sound Off
			: Reset All Cntrls:
:Prog Change : True #	: o 0 - 127 : *****	: o 0 - 127 : 0 - 127	:
:System Exclusive	: o	: o	:
:System : Song Pos	: x	: x	:
:System : Song Sel	: x	: x	:
:Common : Tune	: x	: x	:
:System :Clock	: x	: x	:
:Real Time :Commands	: x	: x	:
:Aux :Local ON/OFF	: x	: x	:
:Aux :All Notes OFF	: x	: o(123-127)	:
:Mes- :Active Sense	: o	: o	:
:sages:Reset	: x	: x	:
:Notes:			:
			:
			:
			:
			:

Mode 1 : OMNI ON, POLY Mode 2 : OMNI ON, MONO o : Yes
 Mode 3 : OMNI OFF, POLY Mode 4 : OMNI OFF, MONO x : No

Function ...	Transmitted	Recognized	Remarks
Basic Default	: 1 - 16	: 1 - 16	: Memorized
Channel Changed	: x	: x	:
Mode Default	: x	: x	:
Mode Messages	: x	: x	:
Mode Altered	: *****	: x	:
Note Number : True voice	: 0 - 127 *****	*1: 0 - 127	*2:
Velocity Note ON	: o 9nH,v=1-127	: o v=1-127	:
Velocity Note OFF	: x 9nH,v=0	: x	:
After Key's	: o	*1: o	*2:
Touch Ch's	: o	*1: o	*2:
Pitch Bender	: o	*1: o	*2:
Control Change	: 0-121	*1: o	*2:
Prog Change : True #	: o 0 - 127 *****	*1: o 0 - 127	*2:
System Exclusive	: o	*1: o	*2:
System : Song Pos	: o	*4: o	*5:
System : Song Sel	: x	: x	:
Common : Tune	: x	: x	:
System :Clock	: o	*4: o	*3:
Real Time :Commands	: o	*4: o	*5:
Aux :Local ON/OFF	: o	: o	:
:All Notes OFF	: x	: x	:
Mes- :Active Sense	: o	: x	:
sages:Reset	: x	: x	:
Notes:*1 Transmit if filter out is pass.			
: *2 receive if filter in is pass.			
: *3 receive clock at MIDI sync mode.			
: *4 if MIDI control in is on. *5 if MIDI control out is on.			
: send MMC(stop,deffered play,locate) if sync mode is MTC.			
: receive MTC quater frame message if sync mode is MTC.			
Mode 1	: OMNI ON, POLY	Mode 2	: OMNI ON, MONO
Mode 3	: OMNI OFF, POLY	Mode 4	: OMNI OFF, MONO
			o : Yes
			x : No

YAMAHA