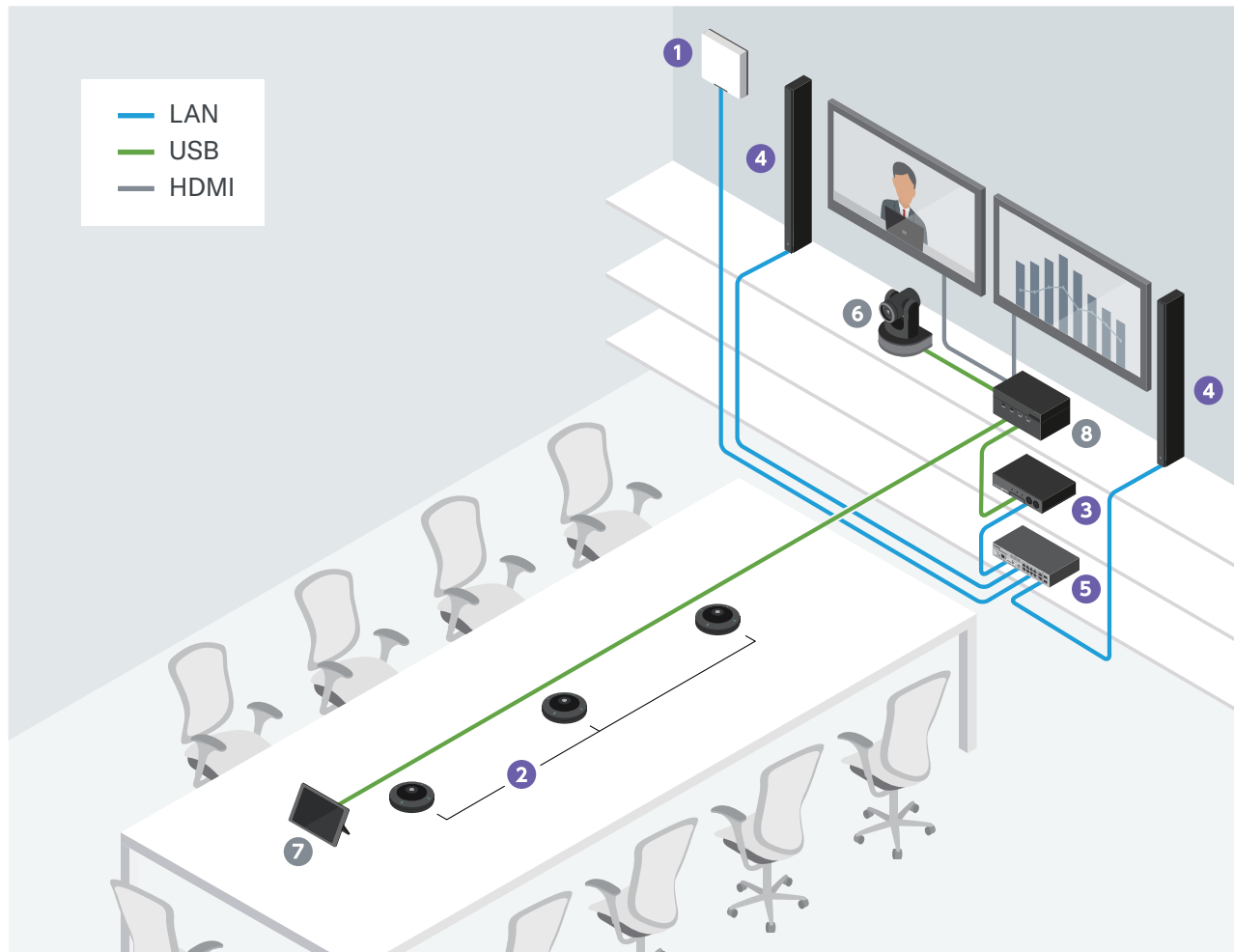


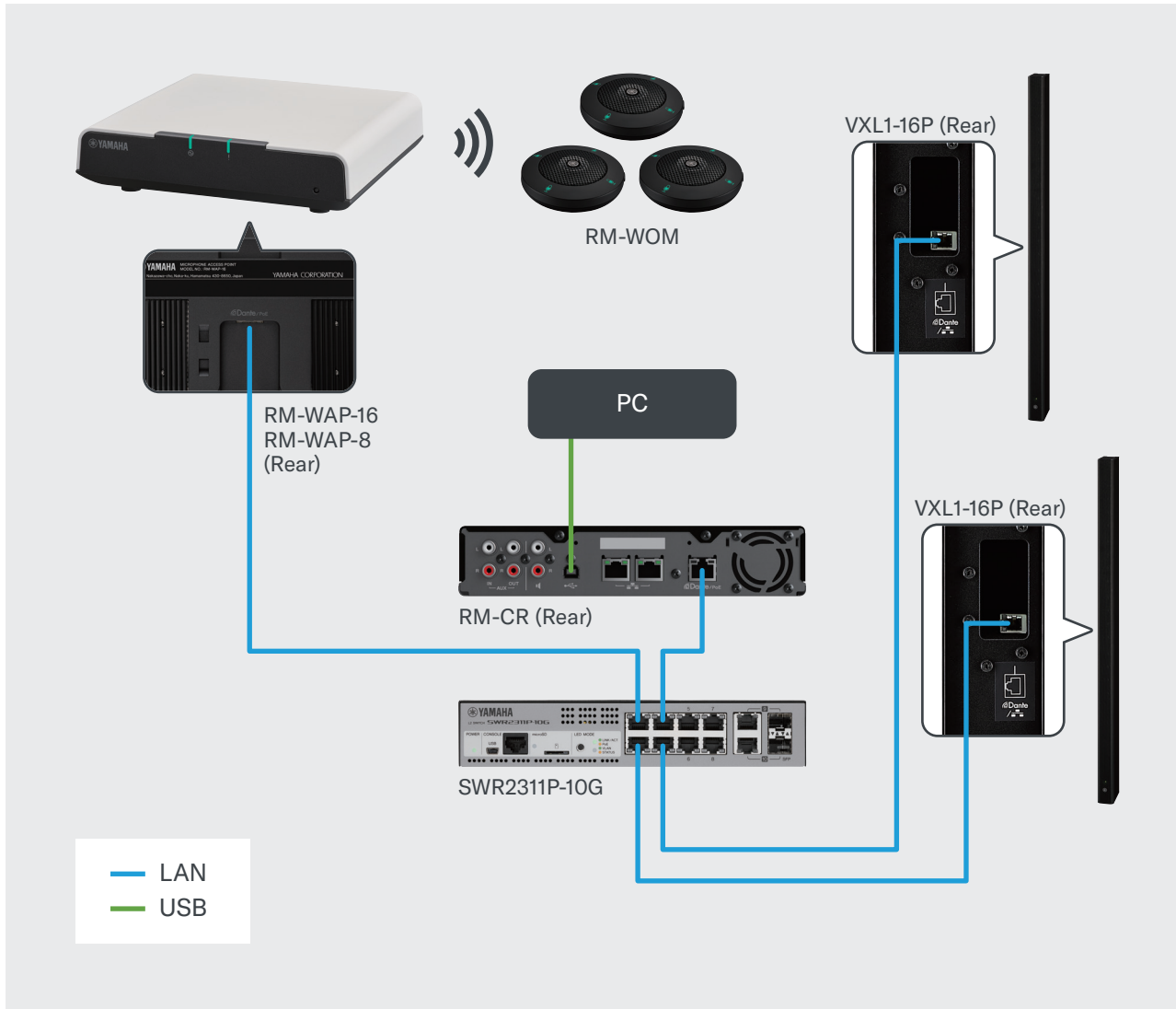
## Solution Overview

ADECIA Wireless Solution is a complete and customizable audio solution for remote conferencing and collaboration and can be used in a wide variety of locations and situations.



- 1 16/8 Channel Wireless Access Point RM-WAP-16/RM-WAP-8**  
Access Point of 1.9GHz band wireless microphone system. Dante audio/control reception and PoE power are provided through a single network cable.
- 2 Wireless Omnidirectional Tabletop Microphone RM-WOM**  
Omnidirectional wireless microphone using 1.9GHz band and 20 hours of continuous microphone operation time with the included Li-ion battery.
- 3 Remote Conference Processor RM-CR**  
Signal processor at the heart of the ADECIA.
- 4 Dante/PoE Powered Speaker VXL1-16P**  
Dante powered speaker for installation that realizes operation with PoE power supply.
- 5 Intelligent L2 Network Switch with PoE SWR2311P-10G**  
Recommended settings for stable operation of a Dante network (such as QoS, EEE, and IGMP Snooping) can be made easily.
- 6 Camera**
- 7 Room Controller**
- 8 PC**

# Connections



# Products



16/8 Channel Wireless Access Point

**RM-WAP-16**  
**RM-WAP-8**



Wireless Omnidirectional Tabletop  
Microphone

**RM-WOM**



Remote Conference Processor

**RM-CR**



Dante/PoE Powered Speaker

**VXL1-16P**



Intelligent L2 Network Switch  
with PoE

**SWR2311P-10G**

YAMAHA CORPORATION

© 2024 Yamaha Corporation. All rights reserved.  
Product features and specifications are subject to change without notice by Yamaha.  
All other product and company names and logos that appear in this leaflet are trademarks or  
registered trademarks of their respective owners.

CG-ADECIA-WIRELESS-SOLUTION-202410-EN